

Wellbeing 800 Close Coupled Back-to-Wall Toilet Suite

Wellbeing 800 raised height wall faced close-coupled vitreous china toilet suite, ideal for hospitals, aged care and commercial applications to meet AS1428.1 compliance for people with disabilities and restricted movement.

FEATURES

- Meets AS1428.1 when installed with a backrest
- Rimless design for improved flushing and cleanliness
- Extended pan length of 800mm suitable for wheelchair use
- WDI inlet and outlet valves, bottom or rear entry water inlet cistern
- Available with S or P Trap installations (S-trap Adaptor included)
- WELS 4 star rated - 4.5/ 3L
- Comes standard with a single-flap grey seat
- Raised height dual flush buttons
- Floor fixing bolts included, with concealed fixing brackets and screws
- Pan load tested to 450kg
- Seat load tested to 150kg
- Coving available on request (additional lead times apply)
- Also available in a floor mounted pan version

Product Codes

WELLBEING800CCWC 800mm Close Coupled Back-to-Wall Toilet Suite with Grey Single Flap Seat

OPTION

WELLBEINGBR Backrest - Wall Mounted

WELLBEING800CCWC



Technical Information

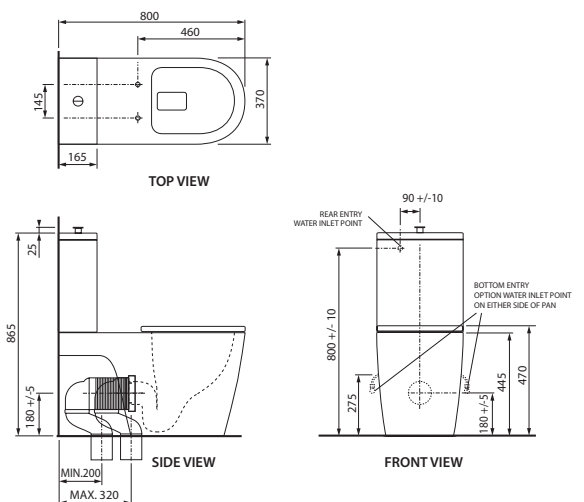
Water Supply Inlet Pressure	Min. 50 kPa - Max. 500 kPa *
Inlet Connection	1/2" BSP (DN15)
Water Inlet Connection Method	Back inlet, or bottom inlet (on either side of pan)
Outlet Connection	DN100 DWV PVC Pipe (S-Trap Adaptor) / DN100 DWV PVC Pan Collar (P-Trap)

*Enware products are to be installed in accordance with the Plumbing Code of Australia (PCA), AS/NZS3500 and the manufacturer's instructions. Installations not complying with PCA, AS/NZS 3500 or the manufacturer's instructions may void the product and performance warranty provisions.

NOTE: Height dimensions do not include bedding

Enware Australia advises:

1. Due to ongoing Research and Development, specifications may change without notice;
2. Component specifications may change on some export models;
3. Refer to Warranty Statement for warranty details on www.enware.com.au/warranty



Version: Apr 21

Call 1300 369 273
www.enware.com.au

Enware Australia Pty Limited
9 Endeavour Rd Caringbah NSW 2229 Australia
Ph: 02 8536 4000 info@enware.com.au

