

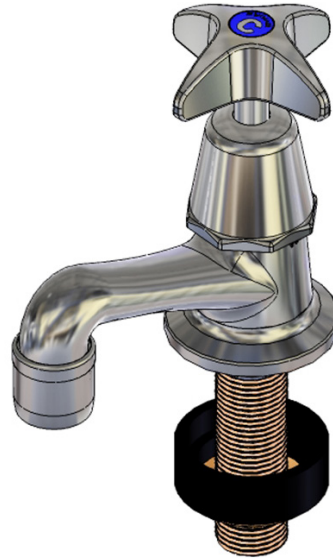
School Pattern Pillar Tap 15mm with Anti-Vandal Aerator 6 Lpm - Jumper Valve

VP327S

Enware's vandal resistant School Pattern tapware is constructed from dezincification resistant (DR) brass with durable chrome plating and an easy to clean design. The handle features a vandal resistant internal locking ring securing it to the spindle and requires a special key to remove.

KEY FEATURES

- Jumper Valve
- Fits square or round tap hole
- 5 Star WELS (6 L/min)
- Anti-Vandal aerator
- Vandal resistant school pattern handle
- Blue (Cold) indicator button supplied standard. Red (Hot) or Yellow (Warm) available on request. Specify when ordering.
- 1/2" BSP male inlet
- Serviceable with all wearing components replaceable, thus providing an even longer life
- Constructed from dezincification resistant (DR) brass
- Durable bright chrome finish



PRODUCT CODES

VP327S

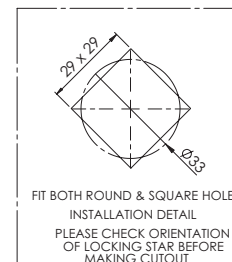
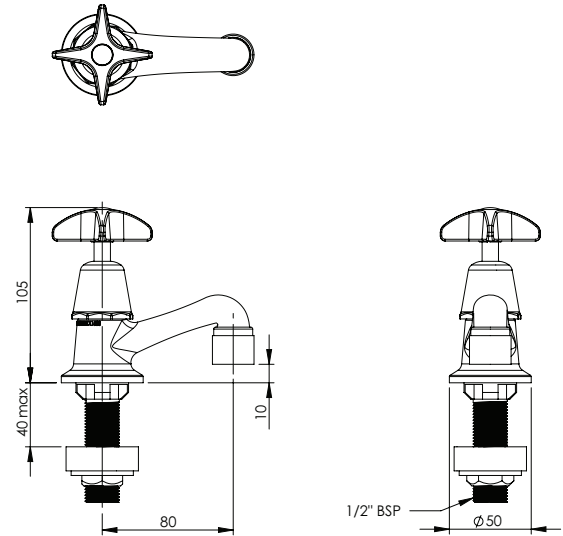
School Pattern Pillar Tap 15mm with Anti-Vandal Aerator 6 Lpm - Jumper Valve

Version 2.0__23Jun22

School Pattern Pillar Tap 15mm with Anti-Vandal Aerator 6 Lpm - Jumper Valve

TECHNICAL INFORMATION

Maximum Static Pressure	1200kPa
Working Pressure Range	50-500kPa
Maximum Working Temperature	95°C (Jumper Valve)



Enware products are to be installed in accordance with the Plumbing Code of Australia and AS/NZS3500. Reference should also be made to the Australasian Health facility Guidelines (AHFG), ABCB and Local Government regulations when considering the choice of, and the installation of these products.

Enware Australia advises:

1. Due to ongoing Research and Development, specifications may change without notice.
2. Component specifications may change on some export models.
3. Refer to warranty statement for warranty details - www.enware.com.au/warranty

Version 2.0__23Jun22