

Enware-Delabie Time Flow Sporting Shower Module

TFC714700

Attractive and compact sporting panel shower ideal for public spaces and amenities, poolside or at the beach.

Wall mounted time flow shower panel for cold or mixed water.

Features a preset 30 second* run time with an easy to operate button and a low flow showerhead.

KEY FEATURES

- Soft-touch operation
- Anodised aluminium satin chrome finish panel
- Time flow 30 sec* (-10/+5 secs)
- Adjustable connector for top or back inlet
- Slimline structure with vandal resistant concealed fixings
- Tamperproof fixed shower head with scale-resistant nozzle and build-in flow rate regulator
- Adjustable spray angle can be locked in place
- Non-return valve and filter
- Integrated stopcock
- ½" BSP male inlet connection for cold or mixed water supply
- WELS: 4 Star Rating (6 L/min fixed)

* Flow times are indicative only and may vary depending on water supply pressure and flow conditions.



PRODUCT CODES

| | |
|-----------|-------------------------|
| TFC714700 | Time Flow Sports Shower |
|-----------|-------------------------|

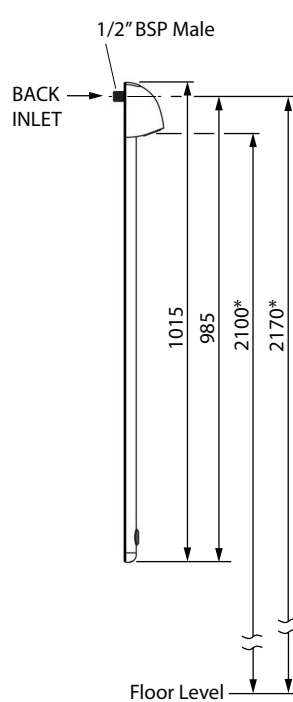
Version: Mar 22

Enware-Delabie Time Flow Sporting Shower Module

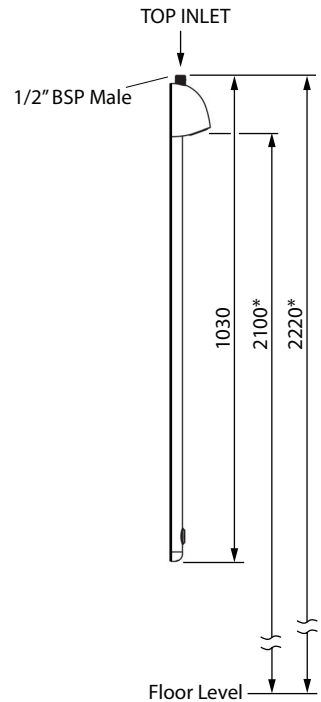
TECHNICAL INFORMATION

| | |
|-------------------------------|---------------------------------|
| Working Pressure Range | 150 - 500 kPa |
| Recommended Pressure | 250-350 kPa |
| Maximum Pressure | 750 kPa For testing purposes |
| Maximum Water Temperature | 60°C |
| Recommended Water Temperature | Cold to 41°C |
| Flow Time | 30 seconds +5 /-10 ** |
| Flow Rate | 6 L/min |
| Push Button Operating Force | 25N @ 300 kPa |
| Inlet Connection | 15mm (1/2" BSP) Male |

** Flow times are indicative only and may vary depending on water supply pressure and flow conditions.



BACK INLET SETOUT



TOP INLET SETOUT

* Recommended shower installation height



Enware products are to be installed in accordance with the Plumbing Code of Australia and AS/NZS3500. Reference should also be made to the Australasian Health facility Guidelines (AHFG), ABCB and Local Government regulations when considering the choice of, and the installation of these products.

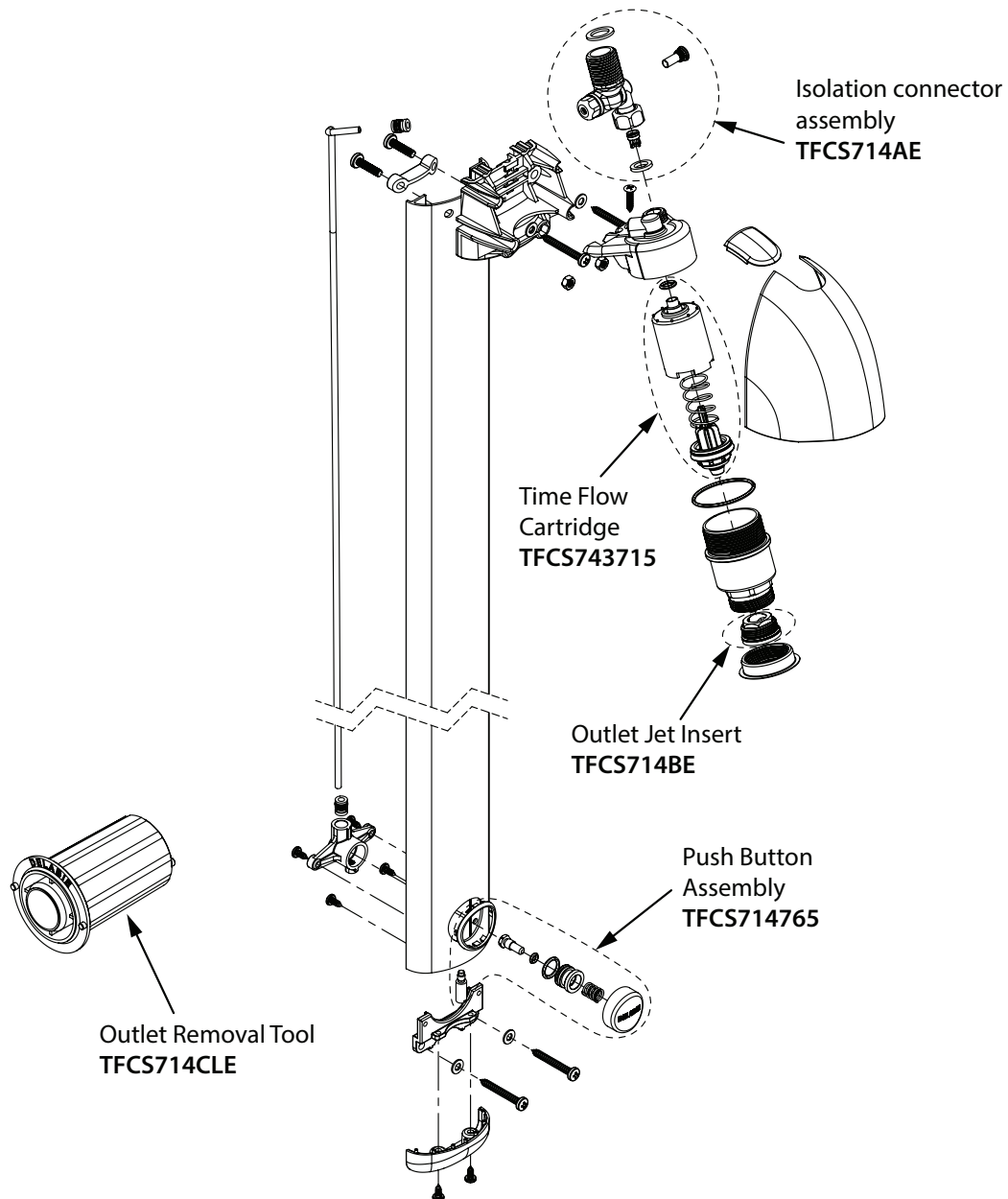
Enware Australia advises:

1. Due to ongoing Research and Development, specifications may change without notice.
2. Component specifications may change on some export models.
3. Refer to warranty statement for warranty details - www.enware.com.au/warranty

Version: Mar 22

Enware-Delabie Time Flow Sporting Shower Module

SPARE PARTS



Version: Mar 22