

# SQX Spout 120mm

## SQ120SD

### KEY FEATURES

- Self draining angled spout
- Suitable for SQX Thermostatic Mixer models  
ATM607DX, ATM607LX, ATM610X, ATM610LX,  
ATM610X-215
- 8L/min, 5 L/min or 3.8 L/min Cache aerator



### PRODUCT CODES

SQ120SD-L3	SQX Spout 120mm 8 lpm
SQ120SD-L5	SQX Spout 120mm 5 lpm
SQ120SD-L6	SQX Spout 120mm 3.8 lpm



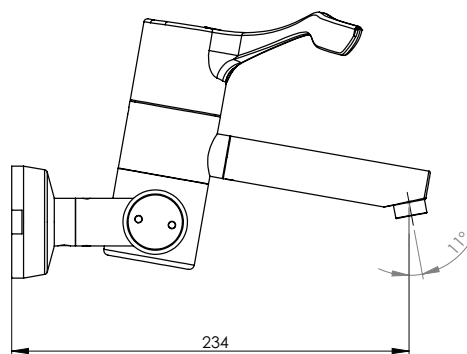
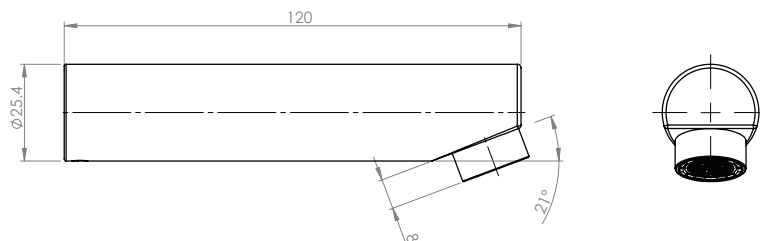
120mm spout shown with ATM607DX and ATM610X

Version 1.0\_\_24Oct22

# SQX Spout 120mm

## TECHNICAL INFORMATION

Maximum Working Pressure	600kPa
Maximum Working Temperature	70°C



60mm spout shown with ATM610DX



Enware products are to be installed in accordance with the Plumbing Code of Australia and AS/NZS3500. Reference should also be made to the Australasian Health facility Guidelines (AHFG), ABCB and Local Government regulations when considering the choice of, and the installation of these products.

Enware Australia advises:

1. Due to ongoing Research and Development, specifications may change without notice. 2. Component specifications may change on some export models. 3. Refer to warranty statement for warranty details - [www.enware.com.au/warranty](http://www.enware.com.au/warranty)

Version 1.0\_\_24Oct22

