

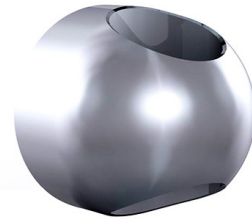
Hose Restrictor Wall Bracket

SGRXSR025

A bracket to restrict the reach of a shower hose.

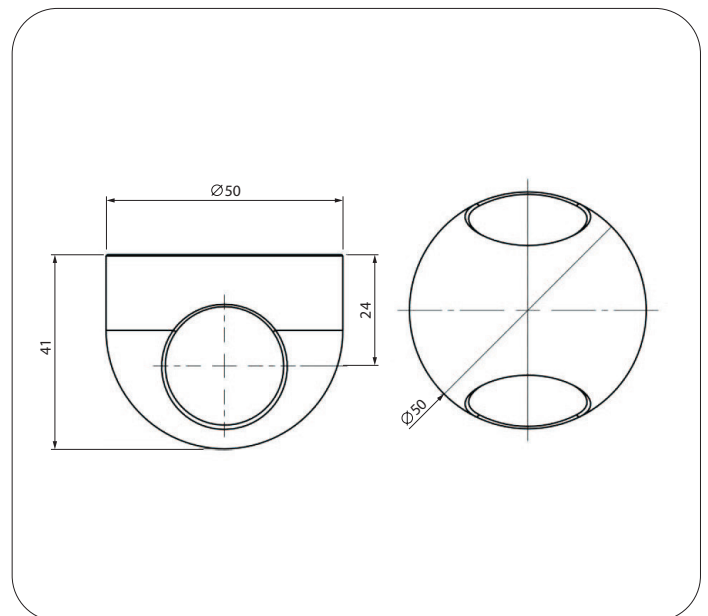
FEATURES

- Wall mounted hose retainer
- Suitable for accessible showers with 1500mm shower hose in close proximity to WC
- Dual screw wall mount plate
- Stainless Steel fixings supplied
- Chrome plated finish



Product Codes

SGRXSR025 Hose Restrictor Bracket Chrome



All dimensions are in millimetres.

NOTE: Enware Australia advises: 1. Due to ongoing Research and Development, specifications may change without notice; 2. Component specifications may change on some export models.

Version: Sep 21

Call 1300 369 273
www.enware.com.au

Enware Australia Pty Limited
9 Endeavour Rd Caringbah NSW 2229 Australia
Ph: 02 8536 4000 info@enware.com.au

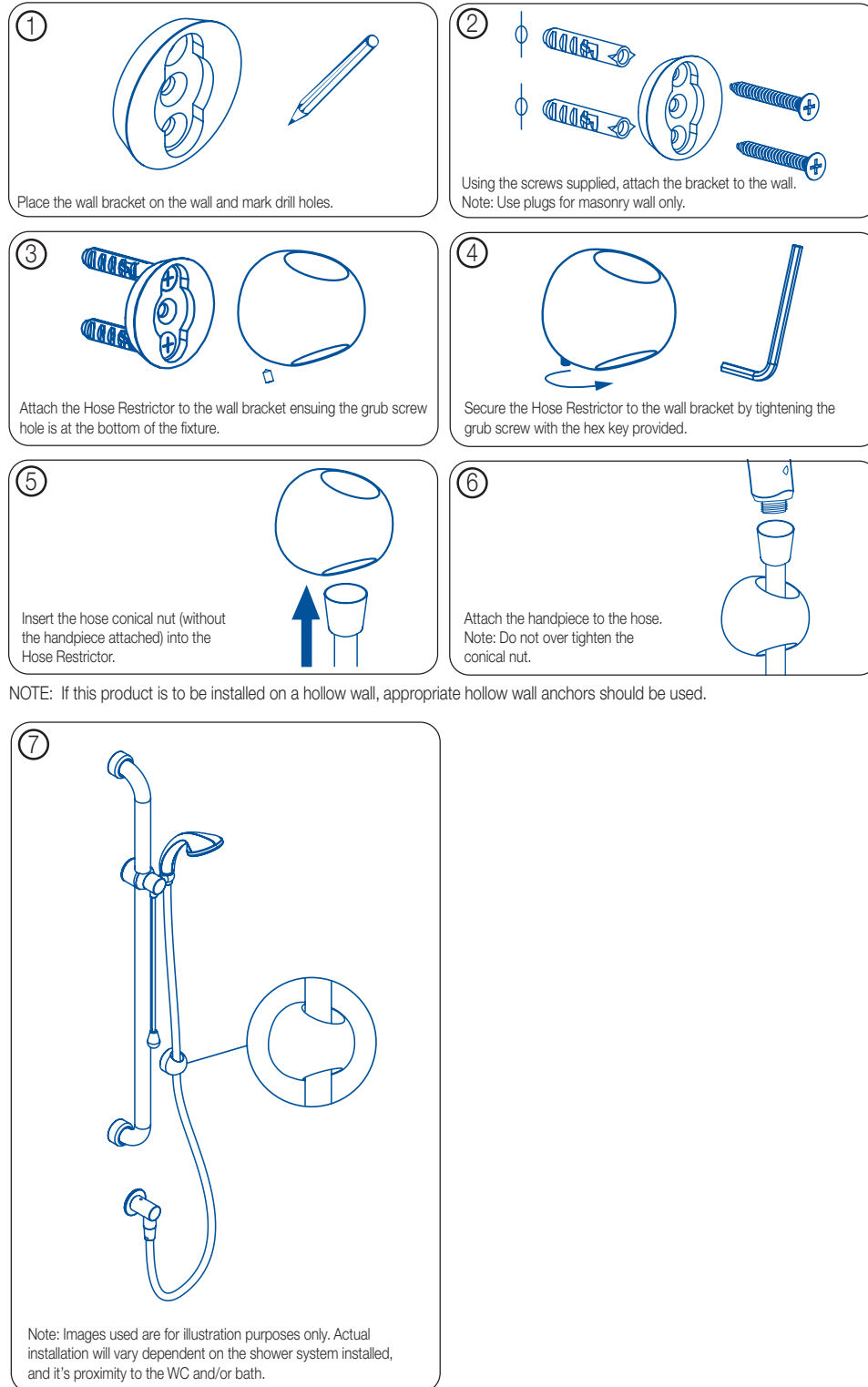


Hose Restrictor Wall Bracket

SGRXSR025

INSTALLATION

IMPORTANT: The position of the Hose Restrictor Bracket is dependent on the proximity of the shower to the WC and/or bath. Place the bracket on the wall (with the hose inserted) and move until the handpiece no longer reaches the WC and/or bath. Once the location for installation has been determined, fix the Hose Restrictor Bracket to the wall as per instructions below.



Version: Sep 21

Call 1300 369 273
www.enware.com.au

Enware Australia Pty Limited
9 Endeavour Rd Caringbah NSW 2229 Australia
Ph: 02 8536 4000 info@enware.com.au

 **ENWARE**