

Enware-Oras Safira Sink Mixer

Installation and Maintenance Instructions

SAF607-RB

SAF607-YB



SAF607S-RB

SAF607S-YB



I00345_FEB 23

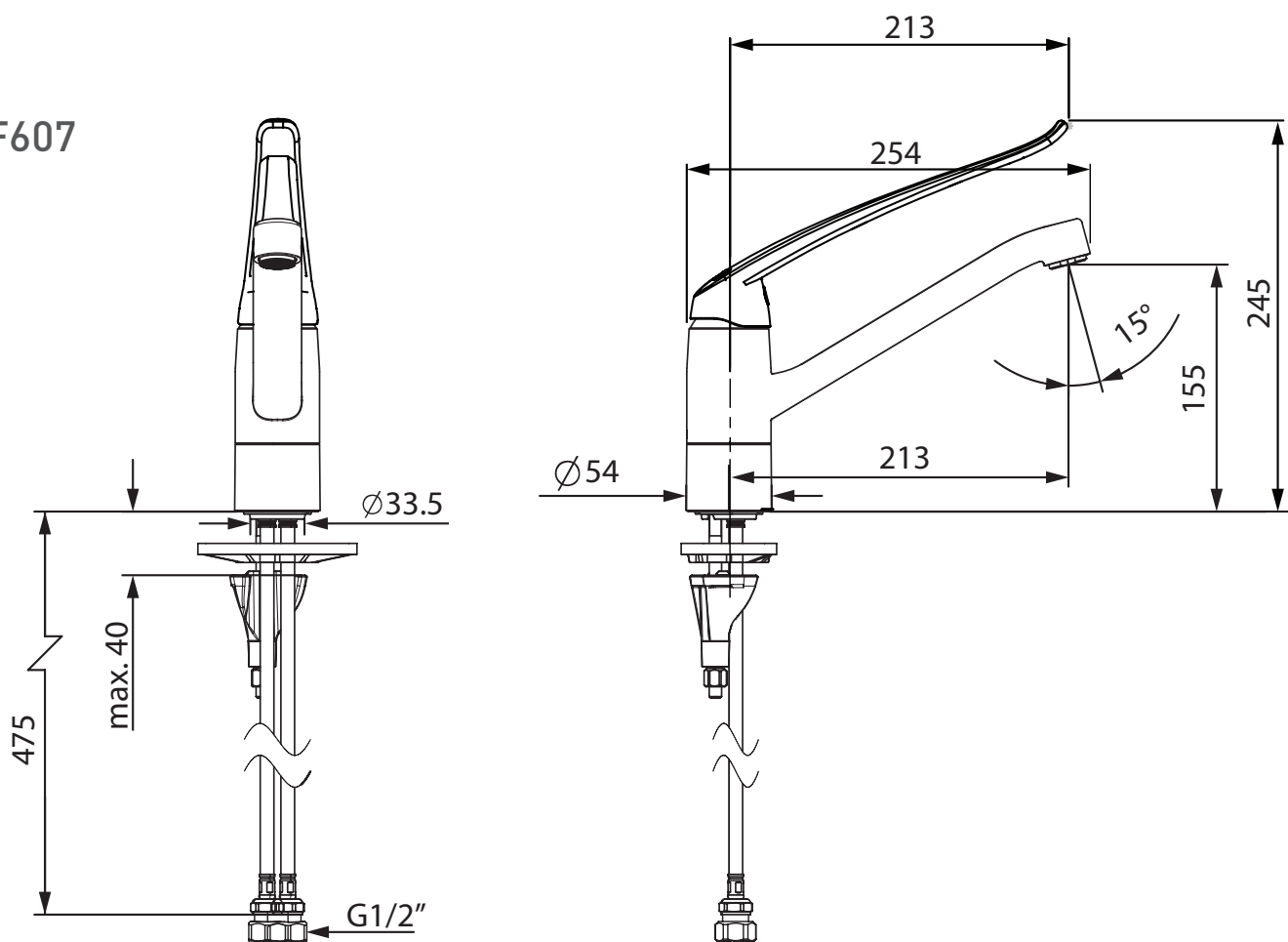
Call 1300 369 273
www.enware.com.au

Enware Australia
9 Endeavour Rd Caringbah NSW 2229 Australia
Ph: 02 8536 4000 info@enware.com.au

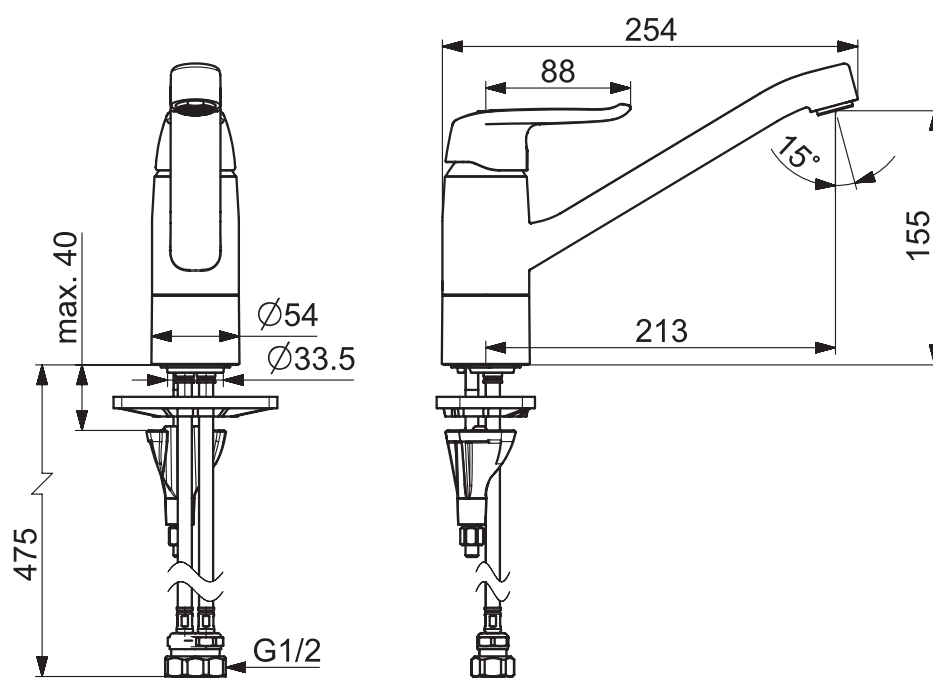
 **ENWARE**

dimensions

SAF607



SAF607S



All measurements are in millimetres.

technical data

Inlet Connection	15mm (1/2" BSP)
Recommended Working Pressure Range	50 - 500 kPa Hot and cold water inlet pressures should be balanced
Static Inlet Pressure	50 - 1000 kPa Maximum 1600 kPa for testing purposes only
Flow Rate	8.0 L/min (3 Star WELS)
Operating Temperature Range	0 - 80 °C
Basin / Sink Cut Out Size	34 - 37 mm diameter
Maximum Bench Thickness	40 mm

installation compliance

Enware products are to be installed in accordance with the Plumbing Code of Australia (PCA) and AS/NZS3500. Installations not complying with PCA and AS/NZS 3500 may void the product and performance warranty provisions.

Reference should also be made to the Australasian Health Facility Guidelines (AHFG), ABCB and Local Government regulations when considering the choice of, and the installation of these products.

This product must be installed and commissioned by a qualified plumber.

For use with potable water only.

NOTE: Enware Australia advises:

1. Due to ongoing Research and Development, specifications may change without notice.
2. Component specifications may change on some export models.

installation

- All supply lines must be flushed thoroughly to remove debris prior to the installation of this product, as per AS/NZS 3500.1. Strainers (40 mesh) are recommended if debris is an ongoing problem.
- A pressure reduction valve may be required to comply with the recommended maximum supply pressure and/or balanced pressure requirements.
- It is recommended that isolation valves are installed on both hot and cold supplies prior to the tap and that these are easily accessible.

1. Prepare a tap hole on bench or sink.
Tap hole can be between 34 – 37mm in diameter, maximum bench thickness is 40mm. SEE IMAGE 01
2. Attach base washer, feeding the threaded bolt through the locating hole. SEE IMAGE 02
3. Feed hoses through the tap hole, and place tap in position. SEE IMAGE 02

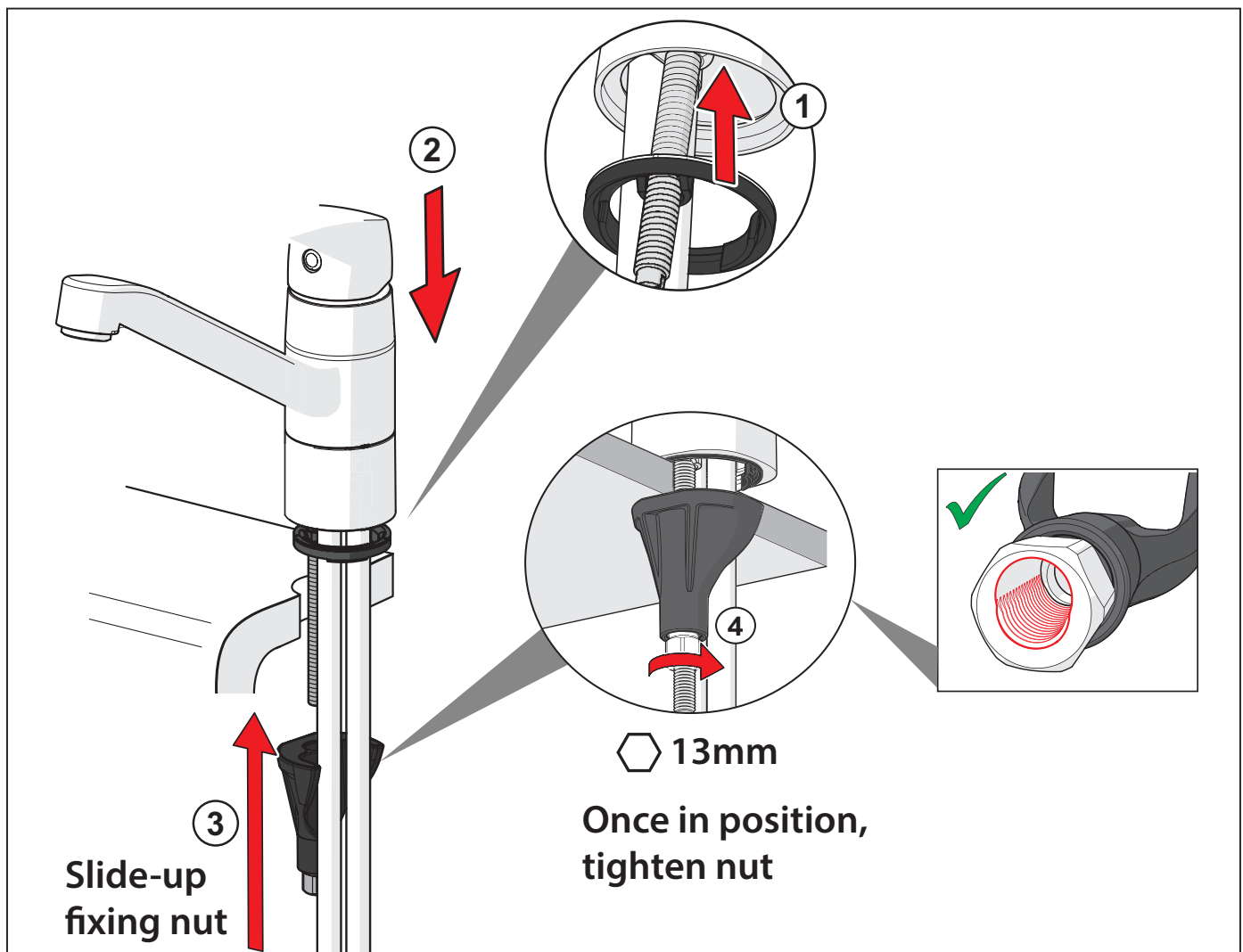
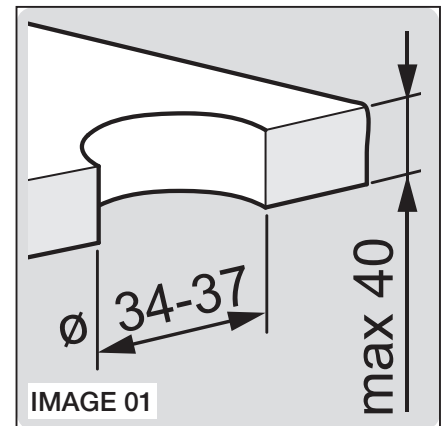


IMAGE 02

4. For sink thickness less than 2mm (which may be the case for stainless steel sinks), fit the stabilising washer first. SEE IMAGE 03
5. Fit fixing nut assembly onto the threaded bolt, and slide up fixing nut assembly.

The Slide-Up Fixing Nut assembly can be simply pushed up to position without the need to turn the nut. Once in position, the nut can be tightened as normal, using a 13mm socket wrench. SEE IMAGE 02

6. Connect flexible hoses to stop taps for hot and cold water supplies. Tighten nuts with a spanner while holding onto the hose crimp with pliers, and ensure that the hose is not kinked, bent, twisted, or stretched.
- SEE IMAGE 04 & 05

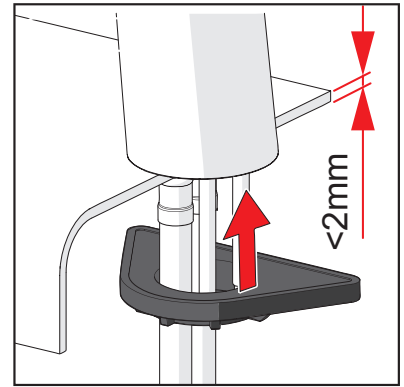


IMAGE 03

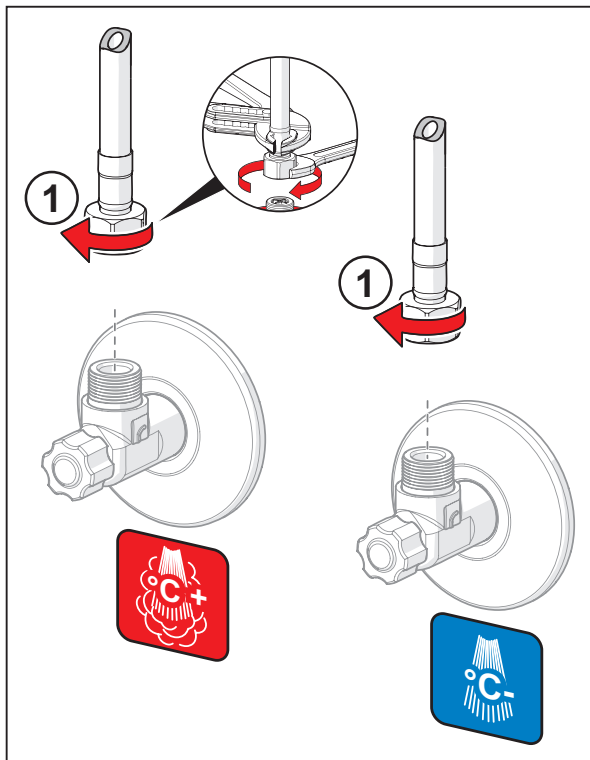


IMAGE 04

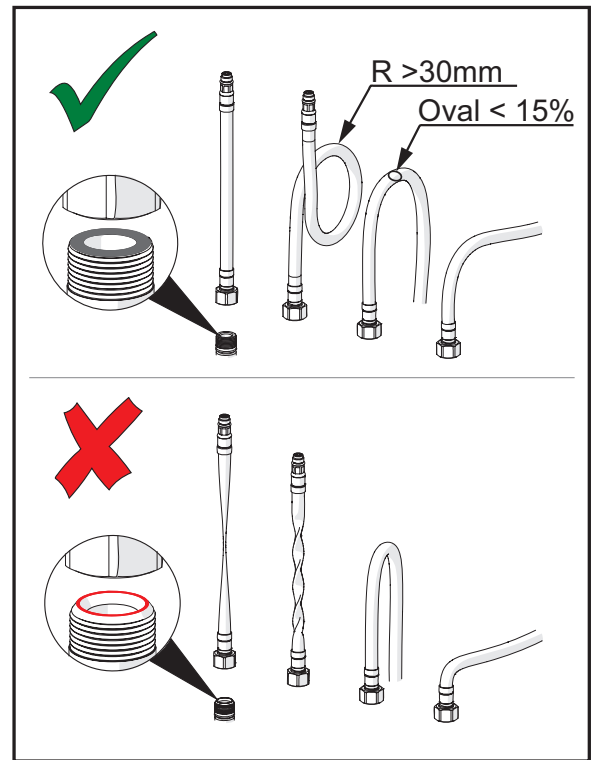


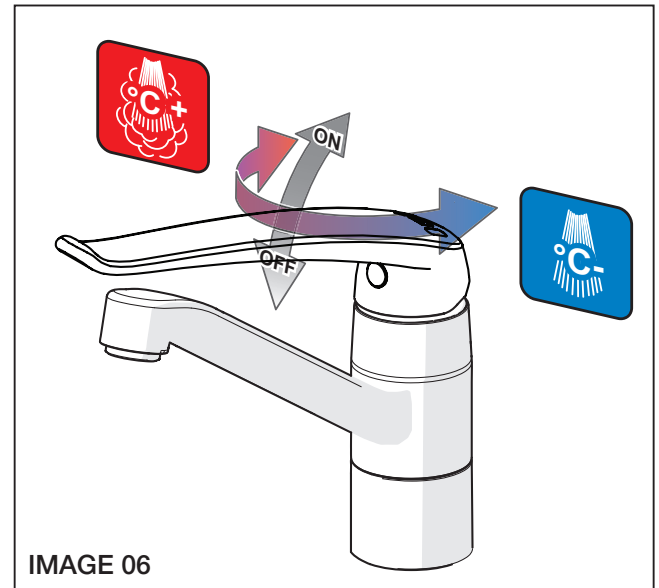
IMAGE 05

7. Turn on water supply and test connections for leaks.



operation

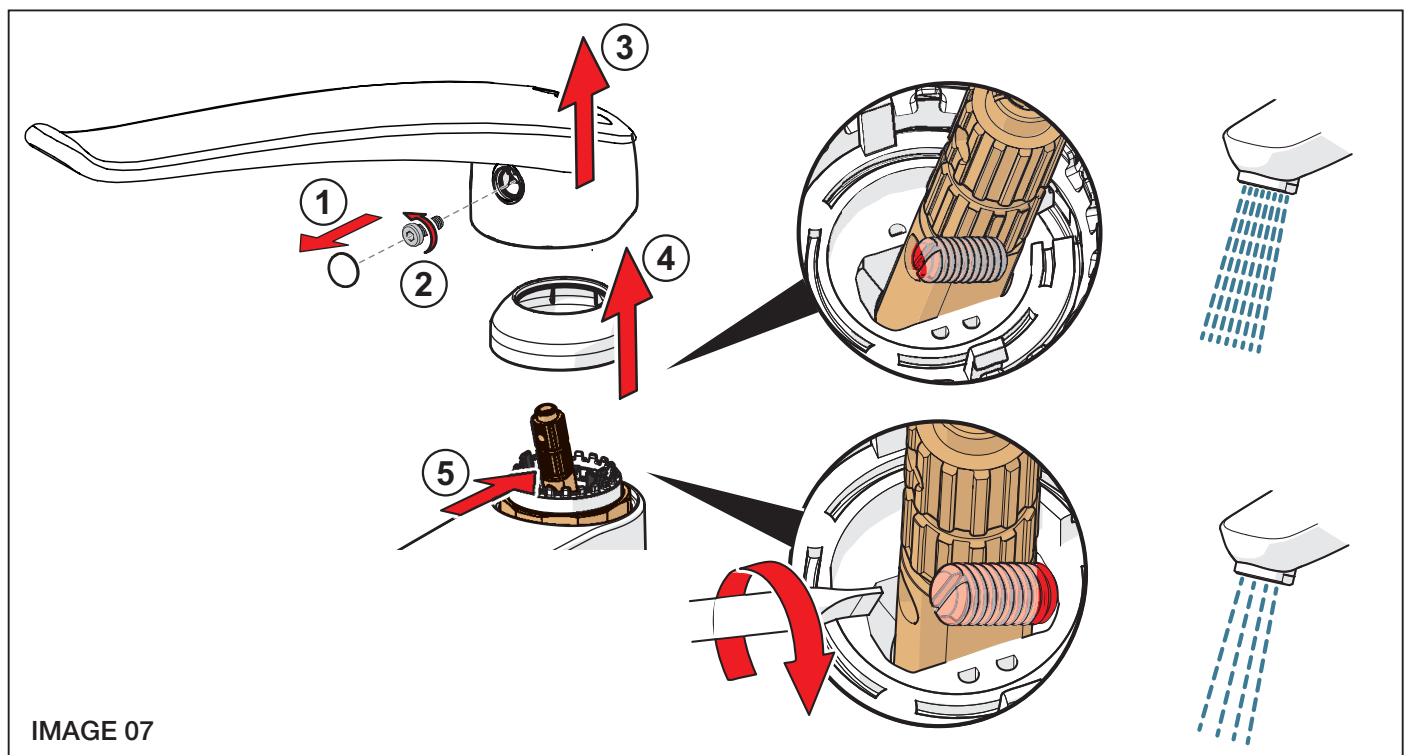
- To turn water on, lift handle up.
- To turn water off, lower handle down.
- Turn handle to the left for hot or warm water.
- Turn handle to the right for cold water.



limiting the flow rate

The lever handle lift angle can be limited to reduce the maximum water flow. This can be done without shutting off water supply to the tap.

Take off the handle and chrome cover cap, then turn the screw located inside the spindle. To limit to a lower flow (i.e. smaller lift angle for the handle), tighten the screw clockwise until the screw protrudes past the spindle on the other side. The screw limits the travel of the lever handle. SEE IMAGE 07



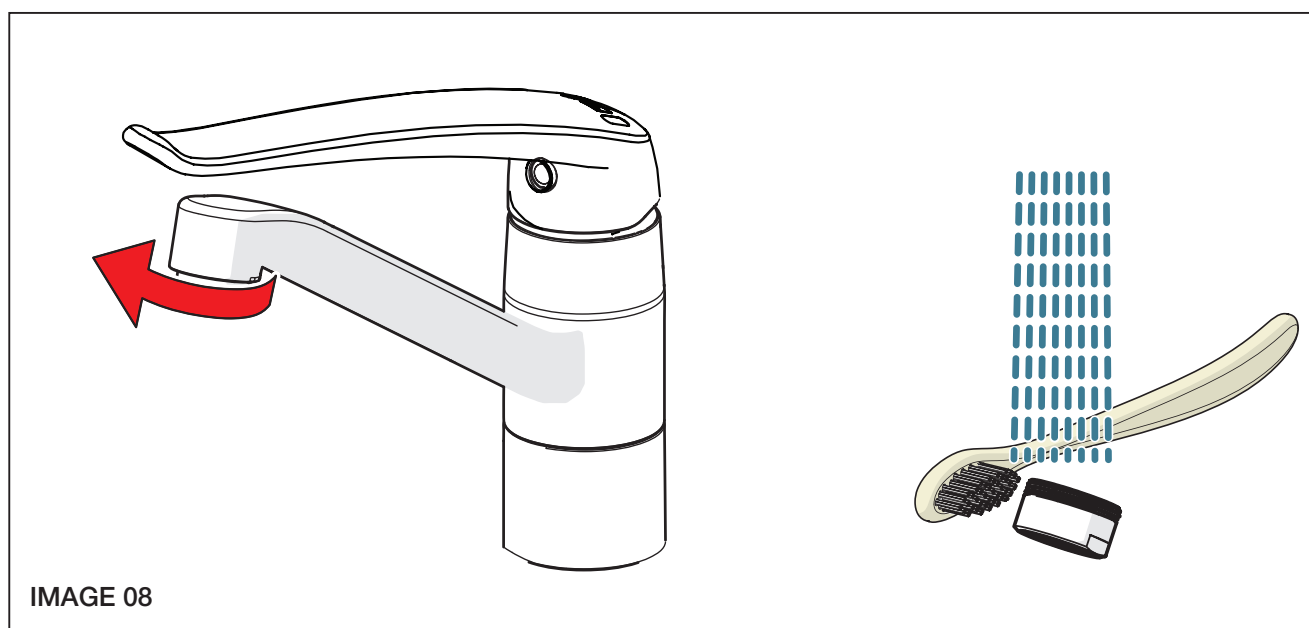
maintenance

CLEANING

Enware products should be cleaned with a soft damp cloth using only mild liquid detergent or soap and water. Do not use cleaning agents containing a corrosive acid, scouring agent or solvent chemicals. Do not use cream cleaners, as they are abrasive. Use of unsuitable cleaning agents may damage the surface. Any damage caused in this way will not be covered by warranty.

CLEAN AERATOR

Clean aerator periodically.
Unscrew the aerator, and rinse it under running water.

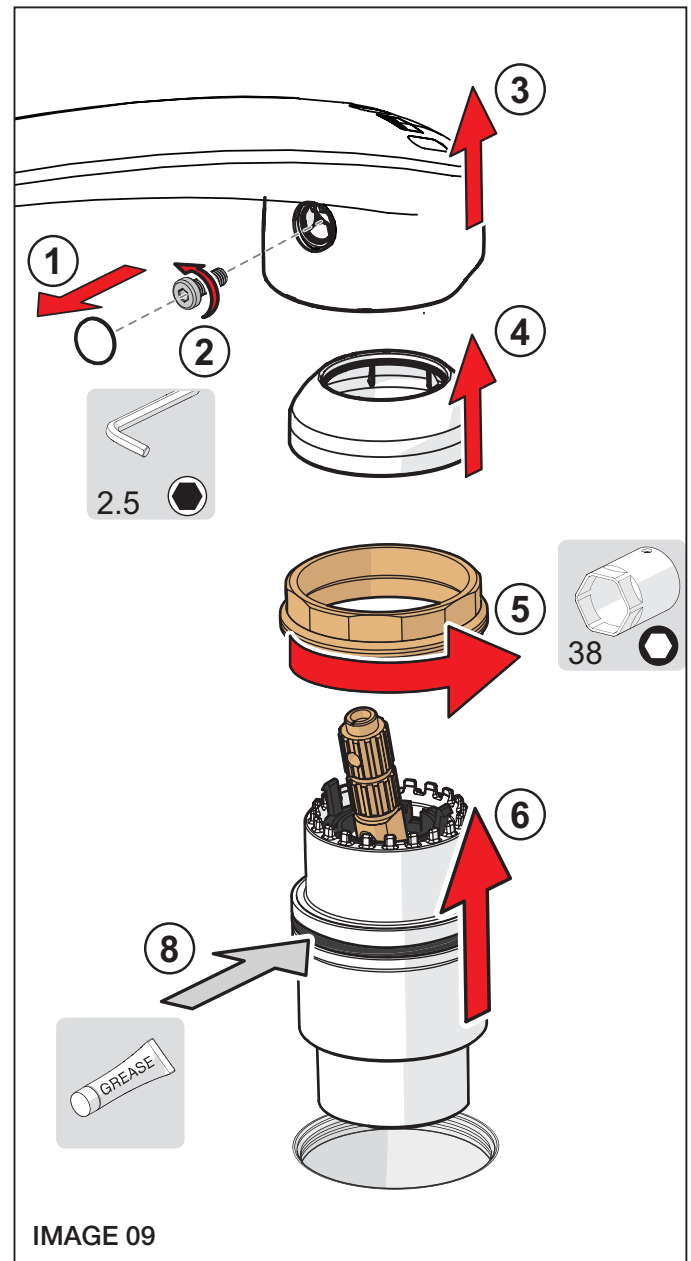


REPLACING CARTRIDGE

1. The cartridge is a non serviceable part. A new cartridge must be used if the existing cartridge is damaged.
2. Turn water supply off and turn mixer handle on to drain water.
3. Remove the mixer handle by firstly prying off the handle plug from the front of the handle. Use a slotted screwdriver to unscrew the handle locking screw and remove screw. SEE IMAGE 09
4. Pull the handle off the spindle.
5. Using a small slotted screwdriver, carefully lever the Cover Cap from under its inside edge and remove it from tap body.
6. Use Oras Cartridge Socket or suitable 38mm socket wrench on the flats of the cartridge fixing nut to unscrew and remove the fixing nut.
7. Pull up vertically on the stem of the cartridge until the seal is released. Remove the cartridge from the mixer body.
8. Inspect and replace as per the trouble-shooting guide and spare parts list.

REASSEMBLING

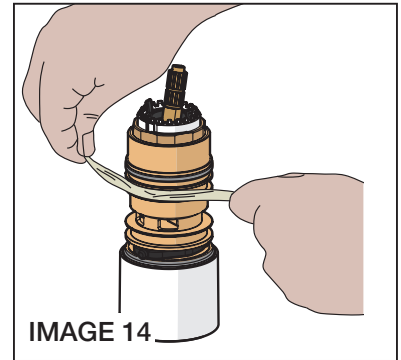
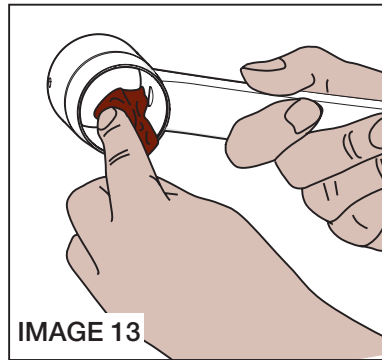
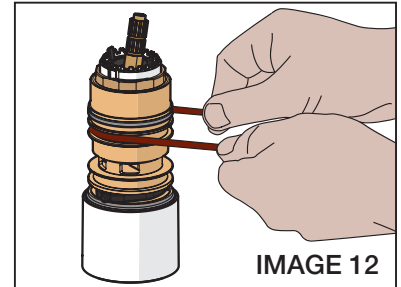
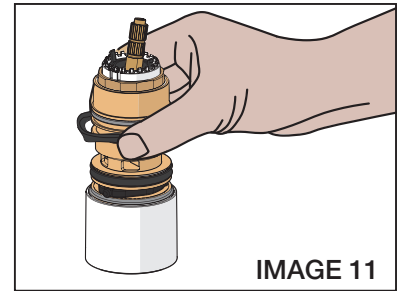
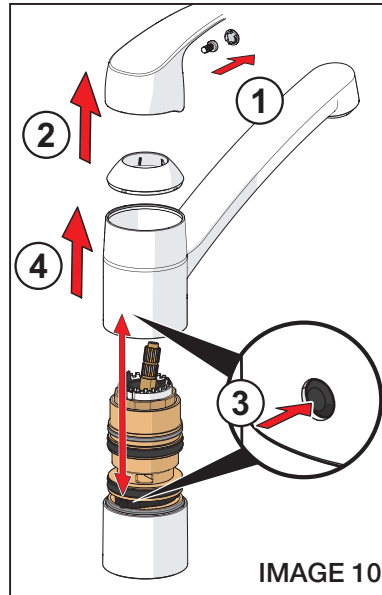
1. Align the locating lug on the cartridge to the locating hole in the tap body, and press the cartridge into position.
2. Screw cartridge fixing nut into mixer body and tighten using the cartridge key or 38mm socket wrench.
3. Fit chrome cover cap and handle components back on.



For specific problems such as a leaking tap refer to Troubleshooting on page 11 for instructions.

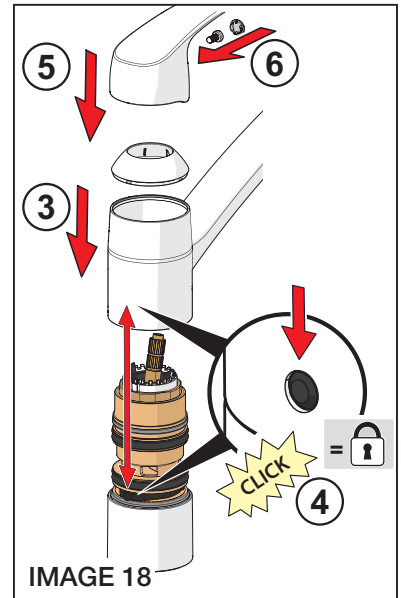
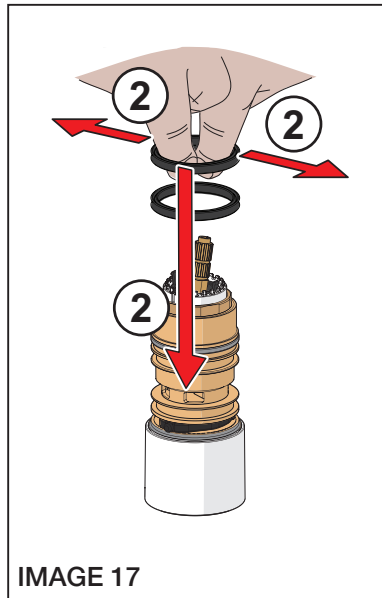
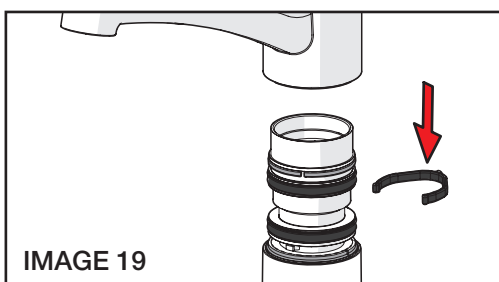
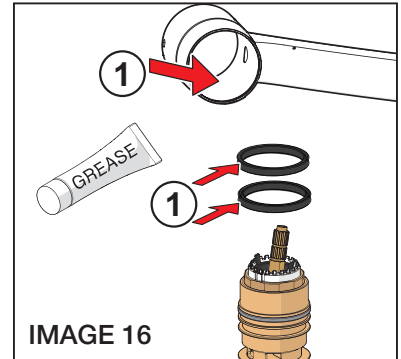
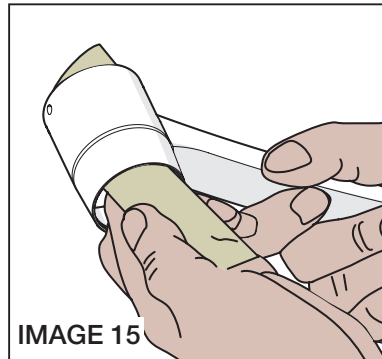
REPLACING SPOUT LIP SEALS

1. Take off Handle and pull off Cover Cap. SEE IMAGE 10
2. Press the black locking tab (3) and pull up the spout. SEE IMAGE 10
3. Take off old seals. SEE IMAGE 11
4. Clean internals of the spout swivel.
5. Clean brass body, take off excess grease and grime using sand paper supplied. SEE IMAGE 12 - 15
6. Apply grease to lip seals and internal swivel of the spout. SEE IMAGE 16
7. Put on new lip seals onto brass body. SEE IMAGE 17
8. Re-assemble spout and handle. Check that the spout is locked in place by the locking ring. SEE IMAGE 18

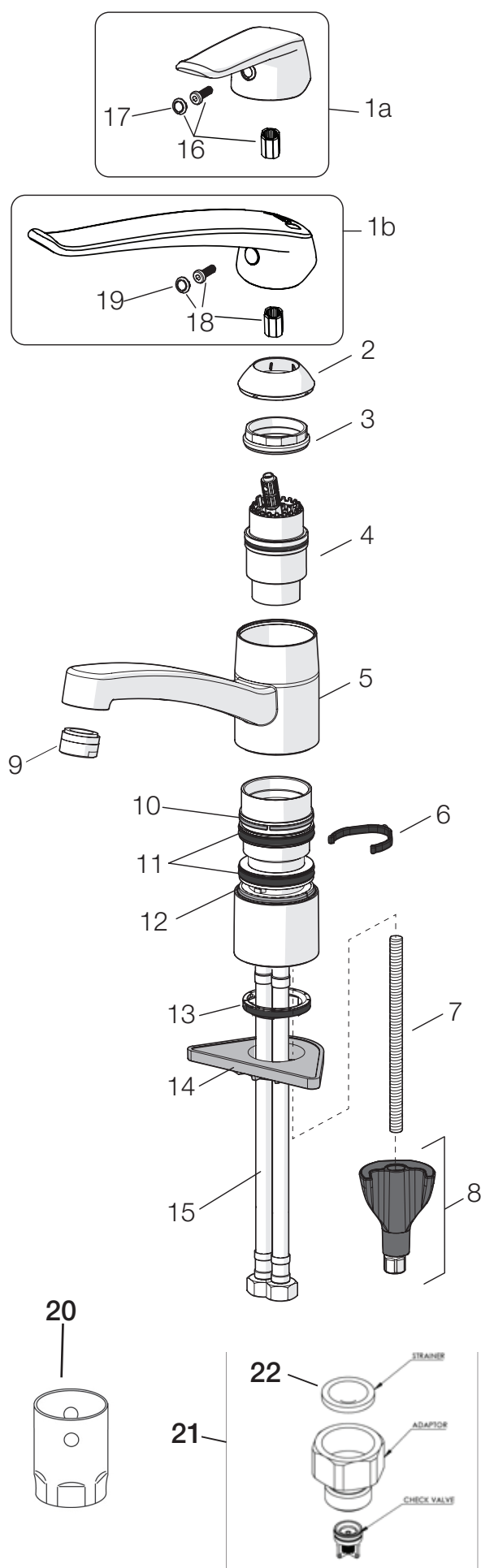


CHANGING SPOUT SWIVEL ANGLE

1. Take off handle and spout (see step 1 and 2 above).
2. Replace the spout limiter locking pin with a 40° - 80° pin. SEE IMAGE 19. The locking pin can be cut in size to limit the angle to anywhere between 40° - 80°. Alternatively, the standard locking pin can be cut in size to increase the limiting angle.
3. Re-assemble spout and handle. Check that the spout is locked in place by the locking ring.



spare parts



	DESCRIPTION	PART CODE
1a	Lever Handle - Safira (Red/Blue) with fixing screw and cap	SAF606HDL-RB
	Lever Handle - Safira (Yellow/Blue) with fixing screw and cap	SAF606HDL-YB
1b	Extended Sink Lever - Safira (Red/Blue) with fixing screw and cap	SAF607HDL-RB
	Extended Sink Lever - Safira (Yellow/Blue) with fixing screw and cap	SAF607HDL-YB
2	Cover Cap	SLMS600
3	Cartridge Fixing Nut	SLMS606
4	Oras Cartridge	SLMS690
5	Swivel spout	
6	Spout Swivel Restricting Clip Standard 120°	
	Spout Swivel Restricting Clip 40° - 80°	SLMS646
7	Fixing Bolt	
8	Fixing Nut Assembly	SAFS601
9	Aerator only 8 L/min	MK059
	Aerator 8 L/min with Aerator Housing	SLMS620
10	Upper spout retaining clip	
11	X-sealing set (2x spout lip seal rings/ grease pack)	SLMS607
12	Lower spout retaining clip	SLMS615
13	Base Washer	
14	Stabilising Washer	
15	Flexible Hoses PEX (pair)	SLMS612
16	Handle Fixing Kit for short handle	SLMS642
17	Handle Plug (each) for short handle	SLMS635
18	Safira Extended Lever Fixing Kit	SAFFIXPLUG
19	Extended Lever Handle Plug (Pack of 10)	SAFPLUG
20	Oras Cartridge Key	SLMS622
21	3/8" x 1/2" Adaptor with Check Valve & Strainer (Each)	SLMS611
22	1/2" Mesh Strainer Only (2 in pack)	SLMS629

troubleshooting

Refer to the following troubleshooting chart for specific problems and solutions.

PROBLEM	CAUSE	RECTIFICATION
Leaking from outlet.	Cartridge is damaged or split.	Check pressure and install a pressure reduction valve. Replace cartridge.
	Supply pressures too high.	Cartridge fixing nut has been over tightened. Replace cartridge.
	Incorrect installation.	Cartridge fixing nut has been over tightened. Replace cartridge.
	Cartridge has debris caught in the mechanism.	Remove cartridge and inspect. Remove debris and/or replace cartridge if damaged. Install an inline strainer.
	Cartridge fixing nut is loose.	Check cartridge bottom seal and tighten cartridge fixing nut.
	Cartridge not fitted correctly.	
Water is leaking from top of mixer body.	Mixer body O-rings are worn. Cartridge seals are worn.	Replace cartridge.
Water is not flowing from tap.	Water turned off.	Turn water on.
	Aerator / Flow control or check valve is blocked by debris.	Remove aerator flow control from spout and clean debris. Install an inline strainer. Clean check valve.
Hot water flows when handle is turned anti-clockwise.	Hot and cold connections are incorrect.	Reconnect hot and cold supply correctly to mixer.
Flexible inlet hose connector does not unscrew.	Hose is turned in the wrong direction.	Reverse thread onto mixer body. To unscrew, turn the hose connector clockwise.

Enware Australia (“we” or “us”) warrants that this product (also referred to as “our goods”) will be free from all defects in materials and workmanship for 15 years* from the date of purchase. Our liability under this warranty is limited at our option to the repair or replacement of the defective product or part, the cost of repair of the defective product or part or the supply of an equivalent product or part, in each case if we are satisfied the loss or damage was due to a defect in the materials or workmanship of the product or part. All products must be installed in accordance with the manufacturer’s instructions, the PCA, and AS/NZS3500 including any other applicable regulatory requirements.

making a claim

To make a claim under this warranty you must notify us in writing within 7 days of any alleged defect in the product coming to your attention and provide us with proof of your purchase of the product and completed the Online Product Service and Warranty Form available on website www.enware.com.au/product-service-enquiry.

All notifications and accompanying forms must be sent to us marked for the attention of the Enware Australia, 9 Endeavour Road, Caringbah NSW 2229. We can also be contacted by telephone (1300 369 273) or by email (info@enware.com.au).

Your costs in making a claim under this warranty, including all freight, collection and delivery costs, are to be borne and paid by you. We also reserve the right at our cost to inspect any alleged defect in the product wherever it is located or installed or on our premises.

Conditional warranty: Ceramic Cartridge Oras Single Lever Mixers - 2 years Oras parts and labour warranty from the date of purchase of the product. *After 2 years, a further 3 years Oras replacement part only warranty is applicable to the ceramic disc cartridge only; after 5 years an additional 10 years Enware replacement part warranty is applicable to the ceramic disc cartridge only. **This extended parts only warranty is applicable to Oras Ceramic Disc Single Lever Mixer products purchased within Australia*

exceptions

This warranty does not apply in respect of any damage or loss due to or arising from:

- a) Failure by you or any other person to follow any instructions for use (including instructions and directions relating to the handling, storage, installation, fitting, connection, adjustment or repair of the product) published or provided by us;
- b) Failure by you or any other person responsible for the fitting, installation or other work on the product to follow or conform to applicable laws, standards and codes (including the AS/NZ 3500 set of Standards, all applicable State and Territory Plumbing Codes, the Plumbing Code of Australia and directions and requirements of local and other statutory authorities); or
- c) Any act or circumstance beyond our control including faulty installation or connection, accident, abnormal use, acts of God, damage to buildings, other structures or infrastructure and loss or damage during product transit or transportation.

other conditions

Except as provided or referred to in this document, we accept no other or further liability for any damages or loss (including indirect, consequential or economic loss) and whether arising in contract, tort or otherwise. Any benefits available to you under this warranty are in addition to any non-excludable rights or remedies you may have under applicable legislation, including as a “consumer” under the Australian Consumer Law. To that extent you need to be aware that: Our goods come with guarantees that cannot be excluded under the Australian Consumer Law. You are entitled to a replacement or refund for a major failure and for compensation for any other reasonably foreseeable loss or damage. You are also entitled to have the goods repaired or replaced if the goods fail to be of acceptable quality and the failure does not amount to a major failure.

ADDRESS: 9 Endeavour Rd Caringbah NSW 2229 Australia

POSTAL ADDRESS: P.O. Box 2545, Taren Point NSW 2229 Australia

PHONE: +61 2 8556 4000

1300 369 273 (AUS) WWW.ENWARE.COM.AU INFO@ENWARE.COM.AU

