

Restore Basin or Shower Single Control Panel

RHMIXBT

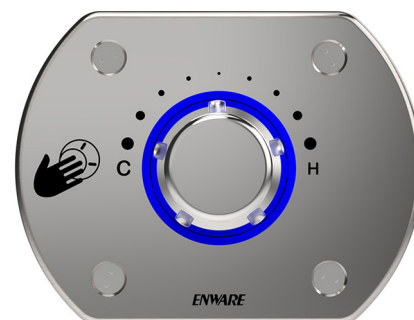
The Custodian® Restore range of products is designed to offer user safety, comfort and ease of use in a specialised health care setting .

With user feedback as to temperature and run time, feather-light activation and precise adjustment, bathing comfort is greatly enhanced.

FEATURES

- Polished stainless steel finish is attractive and easy to clean, with clear pictograms to assist use
- Robust and secure, impact resistant, designed to exceed IK10 requirements
- Exceeds Anti-Ligature requirements of TS001:2013 *
- Designed for flush-to-wall installation in standard 90mm cavity or brick/block wall. The heavy duty galvanised in-wall bracket provides a strong and secure fixing point for the face plate mounting.
- Easy installation with cables included for connection to the Restore Smartboard
- LED backlit temperature and run-time indication every minute for showering as well as flow ending indication
- The control panel is connected to the Restore Smartboard, which provides the inbuilt functionality of the Restore control panel- run times, usage counts, lockouts and hygiene flushing. The electronic TMV controls the temperature from ambient through to the pre-set maximum.
- Additional functionality, reporting and remote access/control is available via the Enware Smartflow Water Management System. This is supplied and installed as a separate and site-specific network integration.

* It is recommended that approved anti-pick sealant be used around panel edges



Product Codes

RHMIXBT Wall Mixer Control Panel for Basin or Shower

OPTIONS

RHBSNMIXBT Wall Basin Mixer Control Panel with Outlet

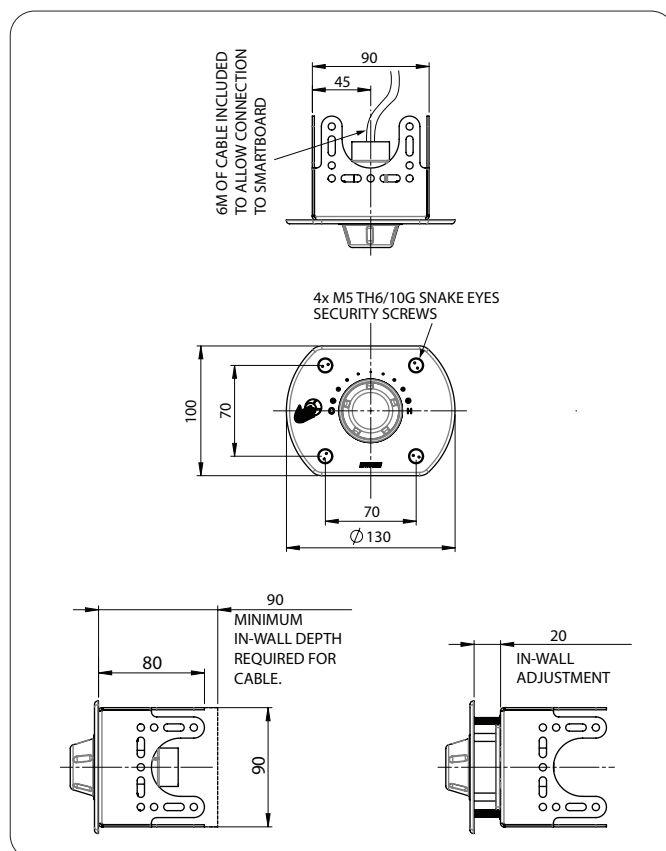
Complete installation will require the following:

- **WMS-RH-SB001R** Custodian® Restore Smartboard
- Optional: Connection to Smartflow Water Management System

Technical Information

Facia Plate Material Grade	316 Stainless Steel
Run Time, Temperature Range, Function (Piezo Button, Temperature Adjustment Wheel)	Controlled by Smart Board and/ or Smartflow Water Management System (if connected)
Operating Voltage	12V
Maximum Cable Length	6 metres (TLI wheel to Smartboard)
IP Rating - TLI wheel (Temperature control wheel and activation button)	IP 68

NOTE: Enware Australia advises: 1. Due to ongoing Research and Development, specifications may change without notice. 2. Component specifications may change on some export models. 3. Refer to Warranty Statement for warranty details - www.enware.com.au/warranty



Version: Aug 21

Call 1300 369 273
www.enware.com.au

Enware Australia Pty Limited
9 Endeavour Rd Caringbah NSW 2229 Australia
Ph: 02 8536 4000 info@enware.com.au

