

# Restore Wall Basin Mixer Control Panel with Outlet

The Custodian® Restore range of products is designed to offer user safety, comfort and ease of use in a specialised health care setting .

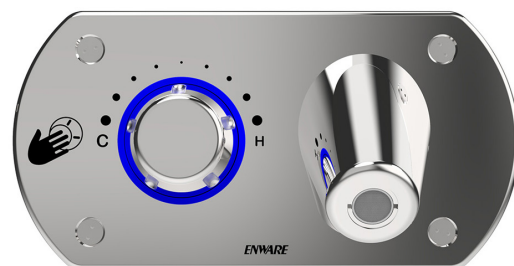
With user feedback as to temperature and run time, feather-light activation and precise adjustment, bathing comfort is greatly enhanced.

## FEATURES

- Polished stainless steel finish is attractive and easy to clean, with clear pictograms to assist use
- Robust and secure, impact resistant, designed to exceed IK10 requirements
- Exceeds Anti-Ligature requirements of TS001:2013 \*
- Designed for flush-to-wall installation in standard 90mm cavity or brick/block wall. The heavy duty galvanised in-wall bracket provides a strong and secure fixing point for the face plate mounting.
- Easy installation with cables included for connection to the Restore Smartboard
- LED backlit temperature and run-time indication every minute for showering as well as flow ending indication
- The control panel is connected to the Restore Smartboard, which provides the inbuilt functionality of the Restore control panel- run times, usage counts, lockouts and hygiene flushing. The electronic TMV controls the temperature from ambient through to the pre-set maximum.
- Additional functionality, reporting and remote access/control is available via the Enware Smartflow Water Management System. This is supplied and installed as a separate and site-specific network integration.

\* It is recommended that approved anti-pick sealant be used around panel edges

## RHBSNMIXBT



## Product Codes

**RHBSNMIXBT** Wall Basin Mixer Control Panel with Outlet

## OPTIONS

**RHMIXBT** Control Panel Only

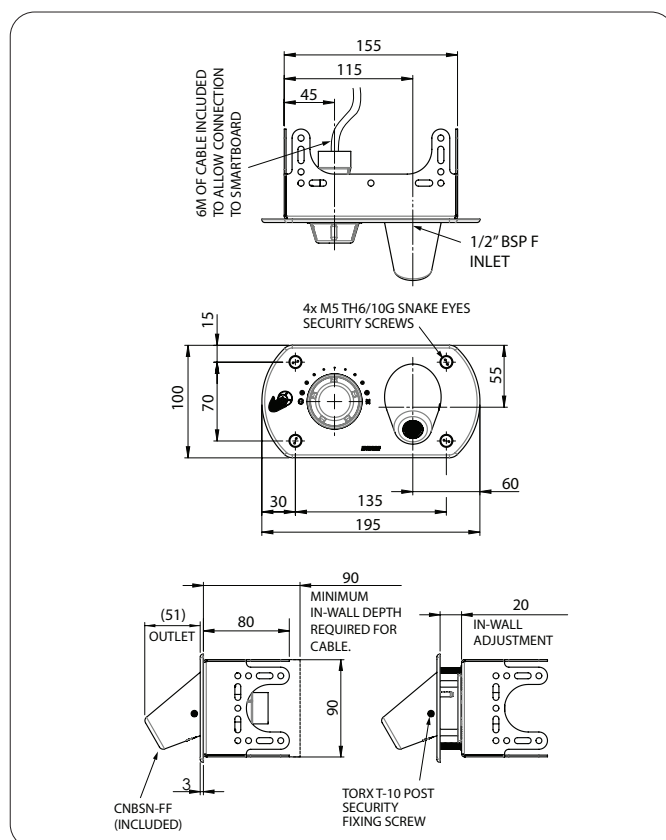
Complete installation will require the following:

- **WMS-RH-SB001R** Custodian® Restore Smartboard
- Optional: Connection to Smartflow Water Management System

## Technical Information

Facia Plate Material Grade	316 Stainless Steel
Run Time, Temperature Range, Function (Piezo Button, Temperature Adjustment Wheel)	Controlled by Smart Board and/ or Smartflow Water Management System (if connected)
Operating Voltage	12V
Maximum Cable Length	TLI wheel to Smartboard: 6m
IP Rating - TLI wheel (Temperature control wheel and activation button)	IP 68
Flow Rate	8 l/min

NOTE: Enware Australia advises: 1. Due to ongoing Research and Development, specifications may change without notice. 2. Component specifications may change on some export models. 3. Refer to Warranty Statement for warranty details - [www.enware.com.au/warranty](http://www.enware.com.au/warranty)



Version: Apr 21

Call 1300 369 273  
[www.enware.com.au](http://www.enware.com.au)

Enware Australia Pty Limited  
9 Endeavour Rd Caringbah NSW 2229 Australia  
Ph: 02 8536 4000 [info@enware.com.au](mailto:info@enware.com.au)

