

# Wellbeing® Livia Sink Set

## Installation and Maintenance Instructions

### LIV80SINK



### technical data

Inlet Connection	15 mm (1/2" BSP)
Working Pressure Range	100 - 800 kPa*
Maximum Temperature	85°C

Enware products are to be installed in accordance with the Plumbing Code of Australia (PCA) and AS/NZS3500. Installations not complying with PCA and AS/NZS 3500 may void the product and performance warranty provisions.

Reference should also be made to the Australasian Health Facility Guidelines (AHFG), ABCB and Local Government regulations when considering the choice of, and the installation of these products.

This product must be installed and commissioned by a qualified plumber.

For use with potable water only.

NOTE: Enware Australia advises:

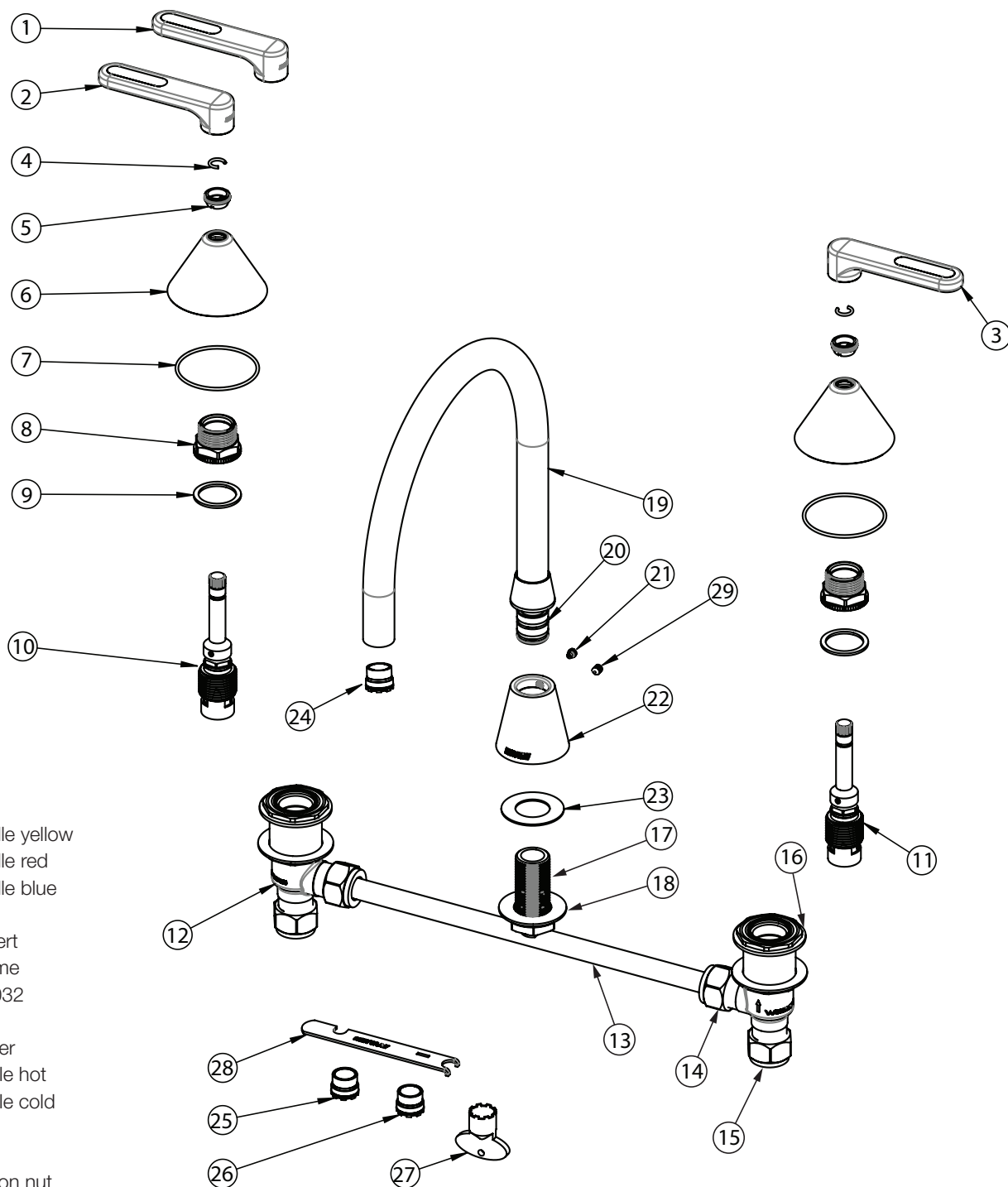
1. Due to ongoing Research and Development, specifications may change without notice.
2. Component specifications may change on some export models.

I00430\_FEB 23

**Call 1300 369 273**  
**[www.enware.com.au](http://www.enware.com.au)**

Enware Australia Pty Limited  
9 Endeavour Rd Caringbah NSW 2229 Australia  
Ph: 02 8536 4000 [info@enware.com.au](mailto:info@enware.com.au)





- 1 Lever handle yellow
- 2 Lever handle red
- 3 Lever handle blue
- 4 Circlip
- 5 Handle insert
- 6 Flange Dome
- 7 O-ring BS032
- 8 Locknut
- 9 Fibre washer
- 10 SBA Spindle hot
- 11 SBA Spindle cold
- 12 Tap body
- 13 Tee
- 14 Compression nut
- 15 Compression nut - inlet
- 16 Back nut & washer
- 17 Tail
- 18 Back nut 1/2" flanged
- 19 Spout
- 20 O-ring BS113
- 21 Grub screw
- 22 Base
- 23 Spacer
- 24 Aerator 8lpm Cache TT
- 25 Aerator 5lpm Cache TT
- 26 Aerator 3.8lpm Cache TT
- 27 Aerator key Cache TT
- 28 VP Spanner
- 29 Grub Screw Cone Point M5x6 SS304

## installation

- All supply lines must be flushed thoroughly to remove debris prior to the installation of this product, as per AS/NZS 3500.1. Strainers (40 mesh) are recommended if debris is an ongoing problem.
- A pressure reduction valve may be required to comply with the recommended maximum supply pressure and/or balanced pressure requirements.
- It is recommended that isolation valves are installed on both hot and cold supplies prior to the tap and that these are easily accessible.

### INSTALLATION

1. Prepare tap holes on bench. Tap body centres: minimum 150mm, maximum 300mm. Drill hole sizes: 25mm for spout, 35mm for tap bodies. SEE IMAGE 01
2. Screw SBA spindles [10, 11] into tap bodies [12]. Use the hex on the SBA to tighten with a spanner. Do not overtighten. (Max. torque 18Nm)
3. Fit fibre washers [9] onto spindles and screw locknuts [8] onto SBA spindles [10, 11]. Tighten locknuts with a spanner. (Max. torque 30Nm) SEE IMAGE 02
4. Pull the brass 1/2" threaded tail [17] off the copper tee piece [13]. Apply thread sealant to the non-bevelled end of the tail, then screw into the spout base [22] and tighten. SEE IMAGE 03
5. To install the spout, fit washer [23] through the tail [17], then fit the spout base onto the bench. From underneath the bench, screw 1/2" brass back nut [18] onto the tail. Note the orientation of the grub screw on the base, then tighten the brass nut firmly using a spanner.  
To fix the spout in position with no swivel, take grub screw [21] out of base [22], and replace with cone point grub screw [29] supplied, then tighten the grub screw.
6. Assemble tap bodies onto tee piece [13], measure the centres, and compare this to the centres of tap holes on bench. Cut the tee piece to the required length using tube cutters. SEE IMAGE 04
7. Assemble tap bodies onto tee piece. Note the cold SBA spindle is marked with blue. Leave one set of fibre washers and back nuts [16] on tap bodies. From underneath the bench, insert the tap bodies and tee piece assembly up through the bench, at the same time inserting the tee piece spigot up into the 1/2" brass tail of spout. Take care not to pinch or damage the o-rings in the process. Fit fibre washers and back nuts [16] from above the bench, and fix tap bodies in place. Tighten back nuts and compression nuts [14] using a spanner. SEE IMAGE 05

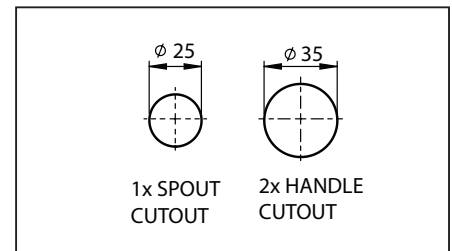


IMAGE 01

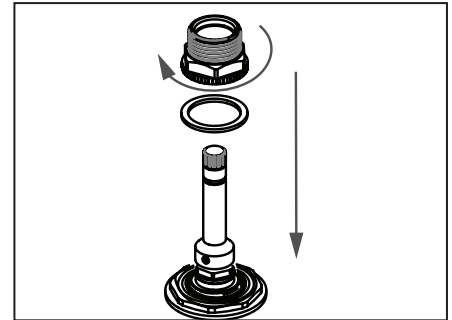


IMAGE 02

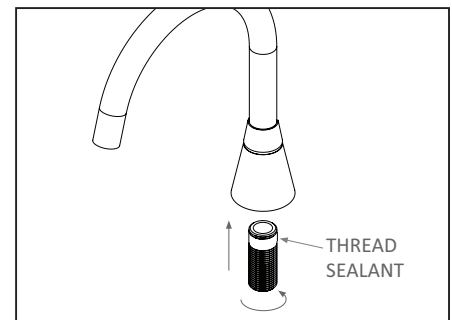


IMAGE 03

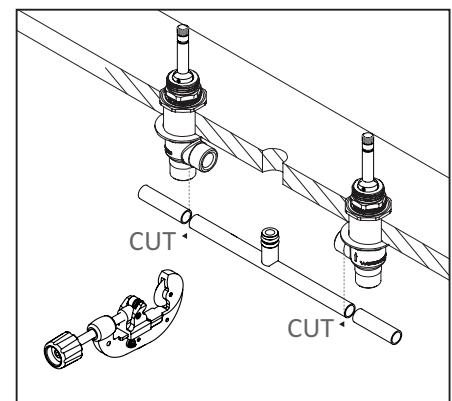


IMAGE 04

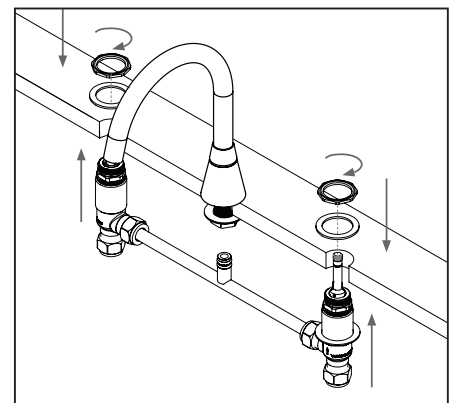


IMAGE 05

8. Fit flange dome [6] onto spindle. Ensure the O-ring [7] is in place. SEE IMAGE 06
9. Fit handle insert [5], then circlip [4] onto spindle. SEE IMAGE 07
10. Fit lever handle onto spindle. Note the orientation of the tap handle. SEE IMAGE 08
11. Fix lever handle in place using spanner [28]. SEE IMAGE 09
12. Connect water supply to inlet of tap bodies [15]. Turn on water supply and test operation.

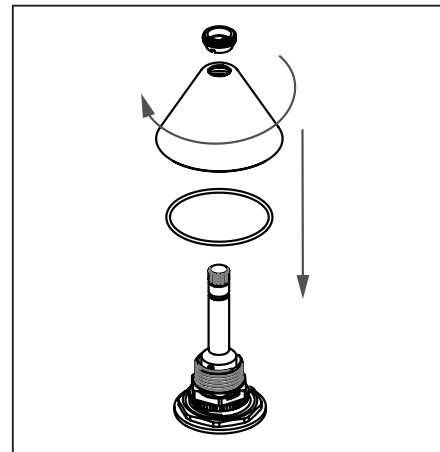


IMAGE 06

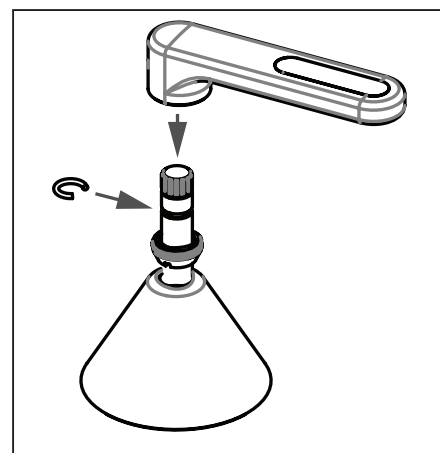


IMAGE 07

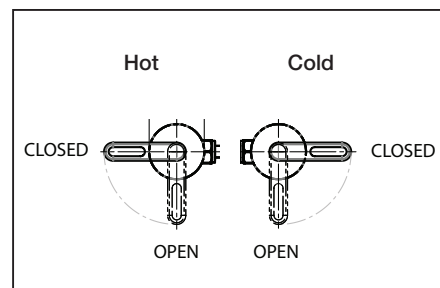


IMAGE 08

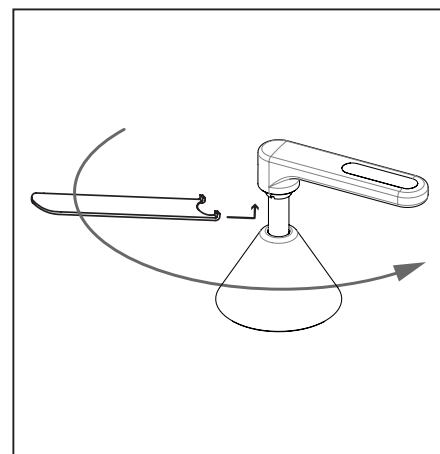
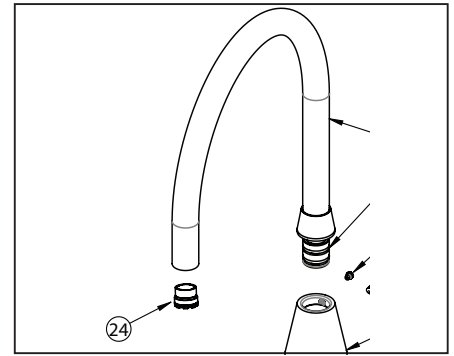


IMAGE 09

## maintenance

### CLEAN AERATOR

Clean aerator [24] periodically.  
Unscrew the aerator using aerator key [27], and rinse it under running water.



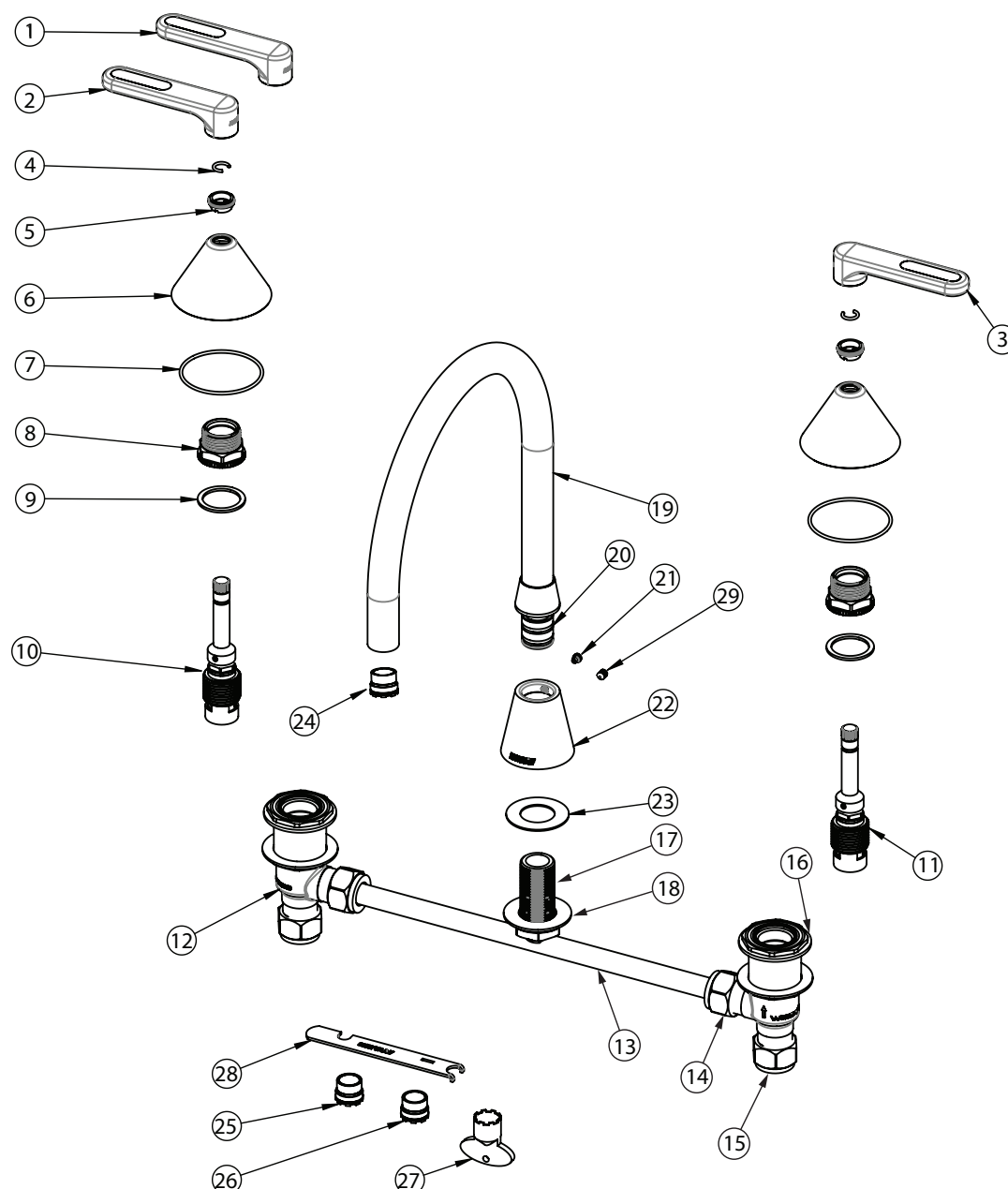
### CLEANING

Enware products should be cleaned with a soft damp cloth using only mild liquid detergent or soap and water. Do not use cleaning agents containing a corrosive acid, scouring agent or solvent chemicals. Do not use cream cleaners, as they are abrasive. Use of unsuitable cleaning agents may damage the surface. Any damage caused in this way will not be covered by warranty.

## troubleshooting

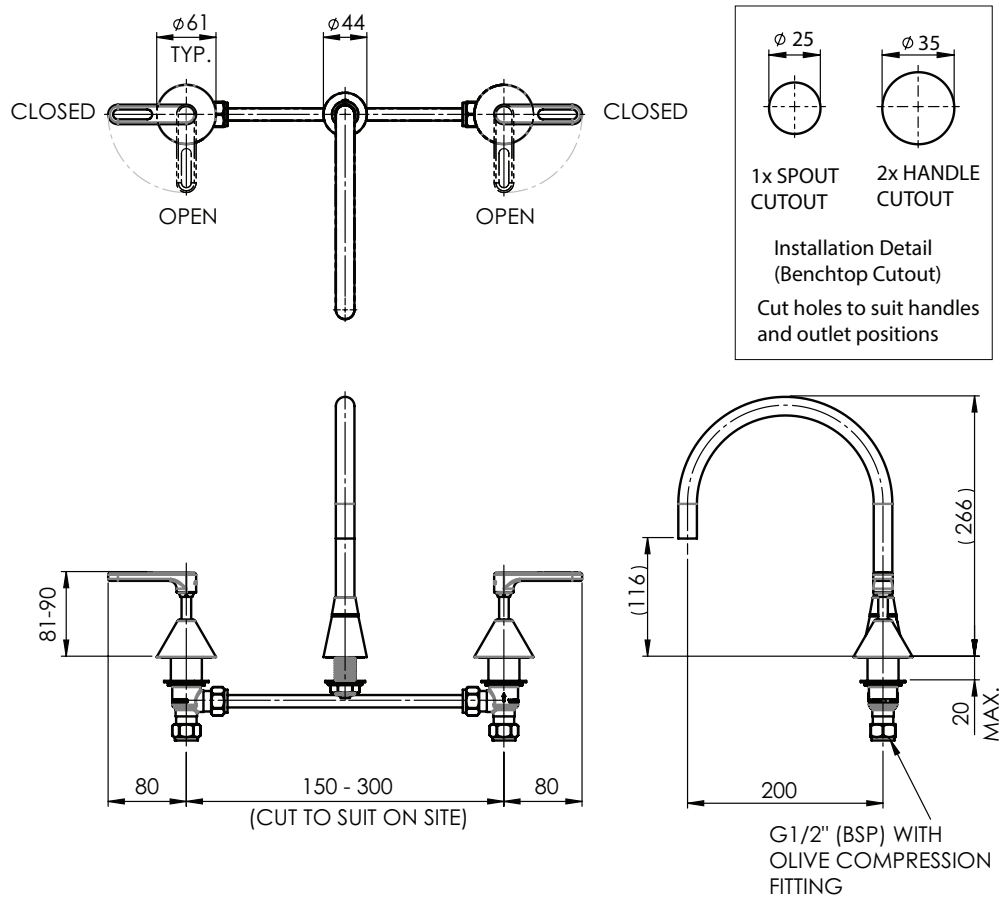
PROBLEM	CAUSE	RECTIFICATION
Water leaking from outlet Water dripping and does not shut off	SBA has debris caught in the mechanism.	Remove SBA and inspect. Remove debris and/or replace SBA if damaged Install an inline strainer.
	Tap seat is damaged	Refurbish tap seat using a reseating tool. If necessary, fit reseating kit or replace tap body.
Water is leaking from spindle	O-ring on SBA is worn or damaged	Replace SBA.
Water is not flowing from tap	Water turned off.	Turn water on.
Poor water flow from outlet	Aerator / Flow control is blocked by debris.	Remove aerator from spout and clean debris. Install an inline strainer.
Handle is wobbly Handle feels loose	Circlip missing Handle insert not tightened	Ensure circlip is in place Tighten insert using key
Handle does not align perfectly straight	Adjust position of SBA by taking off SBA locknut, and tightening or loosening spindle. (Do not adjust position of SBA using handle. Do not over-tighten spindle.)	

## spare parts



DESCRIPTION	PART CODE
Lever handle - yellow Parts: [1] [4] [5]	LIV80HAND-Y
Lever handle - red Parts: [2] [4] [5]	LIV80HAND-R
Lever handle - blue Parts: [3] [4] [5]	LIV80HAND-R
SBA hot - RTC (Clockwise to close) Parts: [8] [9] [10]	LIV80CDSBA-RTC
SBA cold - LTC (Anti-clockwise to close) Parts: [8] [9] [11]	LIV80CDSBA-LTC
Flange dome Parts: [6] [7]	LIV80FLAN
Aerator with key - 8 L/min Cache TT Parts: [24] [27]	SPC301
Aerator with key - 5 L/min Cache TT Parts: [25] [27]	SPC50AF
Aerator laminar insert with key - 3.8 L/min Cache TT Parts: [24] [27]	SPC38AF
Sink spout Parts: [19] [20 x2] [24]	LIV200-3
Base Parts: [21] [22] [23] [17] [18]	FS010
Seals and grub screw kit Parts: 2x of each - [4] [5] [7] [20] [21]	LIV80SEALS

## dimensions



All measurements are in millimetres.

Enware Australia (“we” or “us”) warrants that this product (also referred to as “our goods”) will be free from all defects in materials and workmanship for 10 years\* from the date of purchase. Our liability under this warranty is limited at our option to the repair or replacement of the defective product or part, the cost of repair of the defective product or part or the supply of an equivalent product or part, in each case if we are satisfied the loss or damage was due to a defect in the materials or workmanship of the product or part. All products must be installed in accordance with the manufacturer’s instructions, the PCA, and AS/NZS3500 including any other applicable regulatory requirements.

---

## making a claim

To make a claim under this warranty you must notify us in writing within 7 days of any alleged defect in the product coming to your attention and provide us with proof of your purchase of the product and completed the Online Product Service and Warranty Form available on website [www.enware.com.au/warranty-service-form](http://www.enware.com.au/warranty-service-form).

All notifications and accompanying forms must be sent to us marked for the attention of the Enware Australia, 9 Endeavour Road, Caringbah NSW 2229. We can also be contacted by telephone (1300 369 273) or by email ([info@enware.com.au](mailto:info@enware.com.au)).

Your costs in making a claim under this warranty, including all freight, collection and delivery costs, are to be borne and paid by you. We also reserve the right at our cost to inspect any alleged defect in the product wherever it is located or installed or on our premises.

*\*Conditional warranty: 2 Year parts and labour on the complete assembly with additional 8 years parts only warranty.*

---

## exceptions

This warranty does not apply in respect of any damage or loss due to or arising from:

- a) Failure by you or any other person to follow any instructions for use (including instructions and directions relating to the handling, storage, installation, fitting, connection, adjustment or repair of the product) published or provided by us;
- b) Failure by you or any other person responsible for the fitting, installation or other work on the product to follow or conform to applicable laws, standards and codes (including the AS/NZ 3500 set of Standards, all applicable State and Territory Plumbing Codes, the Plumbing Code of Australia and directions and requirements of local and other statutory authorities); or
- c) Any act or circumstance beyond our control including faulty installation or connection, accident, abnormal use, acts of God, damage to buildings, other structures or infrastructure and loss or damage during product transit or transportation.

---

## other conditions

Except as provided or referred to in this document, we accept no other or further liability for any damages or loss (including indirect, consequential or economic loss) and whether arising in contract, tort or otherwise. Any benefits available to you under this warranty are in addition to any non-excludable rights or remedies you may have under applicable legislation, including as a “consumer” under the Australian Consumer Law. To that extent you need to be aware that: Our goods come with guarantees that cannot be excluded under the Australian Consumer Law. You are entitled to a replacement or refund for a major failure and for compensation for any other reasonably foreseeable loss or damage. You are also entitled to have the goods repaired or replaced if the goods fail to be of acceptable quality and the failure does not amount to a major failure.

---

**ADDRESS:** 9 Endeavour Rd Caringbah NSW 2229 Australia

**POSTAL ADDRESS:** P.O. Box 2545, Taren Point NSW 2229 Australia

**1300 369 273 (AUS) [WWW.ENWARE.COM.AU](http://WWW.ENWARE.COM.AU) [INFO@ENWARE.COM.AU](mailto:INFO@ENWARE.COM.AU)**

