

Slimline Two Way 90 Degree Bench Mounted Laboratory Tap (Burning Gases)

LCN146B

Enware's Slimline laboratory outlets are supplied with a tapered tube nozzle and are assembled for each specific media type.

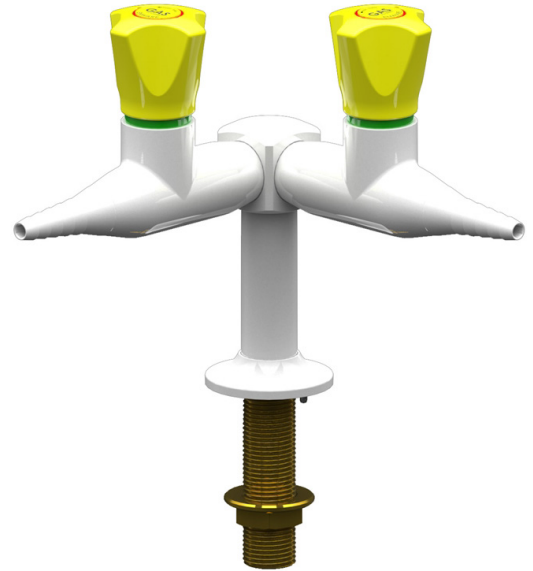
Activation methods include a needle valve for accurate adjustment, or a push-to-turn valve with visual on/off indication.

The durable powder coat finish gives significant protection against corrosion, discolouration and surface damage.

Slimline handles are ergonomically designed for precise feel and finger tip control. Handles are colour coded for easy service identification and use complimentary buttons.

FEATURES

- AGA approved
- Suited for burning gases up to technical gas level 2.0
- Teflon needle valve with stainless steel seat or Push-to-turn valve with visual on/ off indication
- Durable powder coat finish
- Handle and indicator button identification to suit specified media
- 1/2" BSP male inlet tail with 1/4" BSP female thread connection
- Tube nozzle
- Optional integral isolation/ service valve



AGA CERT. 6751
AS4617-2018

Product Codes

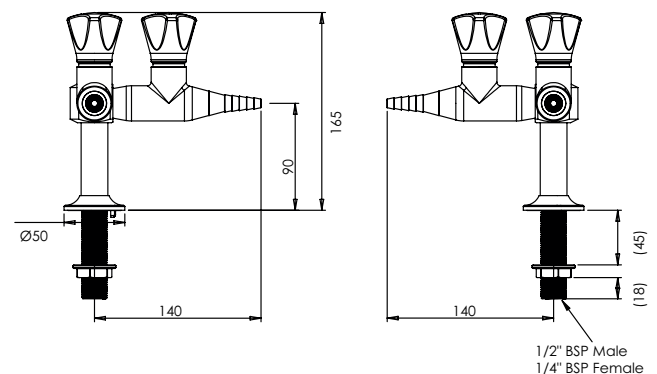
LCN146B	Push-To-Turn Valve - Burning Gas Only
LCN146BI	Push-To-Turn Valve with Integral Isolation Valve - Burning Gas Only
LCN146N	Needle Valve
LCN146NI	Needle Valve with Integral Isolation Valve

Technical Information

Inlet Connection	1/2" BSP Male
	1/4" BSP Female
Recommended Maximum Working Pressure - Push-to-Turn Valve	7 kPa (burning gases)
Recommended Maximum Working Pressure - Needle Valve	700 kPa (burning gases)
Outlet Connection	Tube Nozzle
	3/8" BSP Female (without nozzle)
Burning Gas Options	Acetylene, Ethylene, Methane, Natural Gas, LPG, Propylene <i>Note: Client to specify media type</i>

NOTE: Enware Australia advises:

1. Due to ongoing Research and Development, specifications may change without notice.
2. Component specifications may change on some export models.
3. Refer to Warranty Statement for warranty details - www.enware.com.au/warranty



Version: Sep 21

Call 1300 369 273
www.enware.com.au

Enware Australia Pty Limited
9 Endeavour Rd Caringbah NSW 2229 Australia
Ph: 02 8536 4000 info@enware.com.au

