

Wellbeing® Leva 150mm Basin Set with Fixed Spout - Jumper Valve

Installation and Maintenance Instructions

WLJV150BASIN



technical data

Working Pressure Range	Min 50 kPa Max 500 kPa
Maximum Static Pressure	1200 kPa
Maximum Working Temperature	95°C (Jumper Valve)
Inlet Connection	1/2" BSP Female
Flow Rate	5 L/min (WELS 5 Star) 4 L/min (WELS 6 Star)

Enware products are to be installed in accordance with the Plumbing Code of Australia (PCA) and AS/NZS3500. Installations not complying with PCA and AS/NZS 3500 may void the product and performance warranty provisions.

Reference should also be made to the Australasian Health Facility Guidelines (AHFG), ABCB and Local Government regulations when considering the choice of, and the installation of these products.

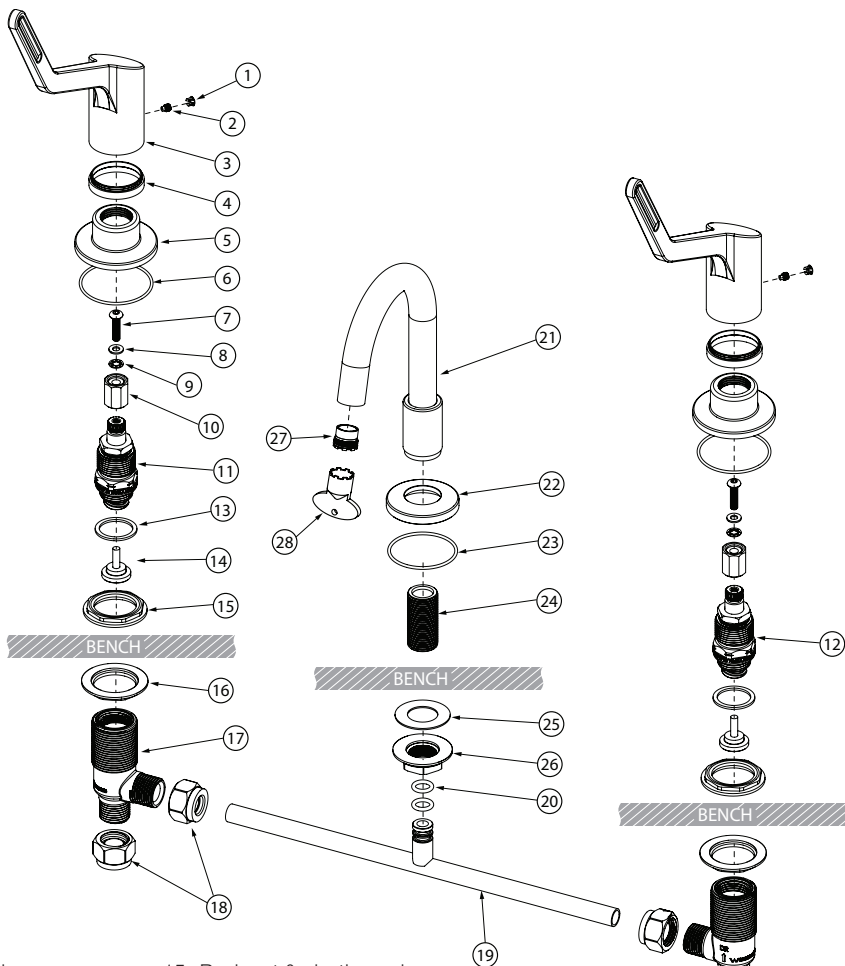
This product must be installed and commissioned by a qualified plumber.

For use with potable water only.

NOTE: Enware Australia advises:

- 1. Due to ongoing Research and Development, specifications may change without notice.
- 2. Component specifications may change on some export models.

I00463_19 Jun 2024



- | | |
|--|-------------------------------------|
| 1 Handle plug | 15 Back nut & plastic washer |
| 2 Grub screw M5 | 16 Back nut & fibre washer |
| 3 Lever handle 150mm | 17 Tap body |
| 4 Colour indicator ring (red/
yellow/ blue) | 18 Compression nut |
| 5 Flange dome | 19 Tee |
| 6 O-ring BS032 | 20 O-ring BS008.5 |
| 7 Screw M5x20 | 21 Spout |
| 8 Washer (Nylon) | 22 Dress ring |
| 9 Tooth washer M5 | 23 O-ring BS030 |
| 10 Spline adaptor | 24 Tail 42mm 1/2" BSP |
| 11 SBA spindle hot | 25 Fibre washer |
| 12 SBA spindle cold | 26 Back nut 1/2" flanged |
| 13 Fibre washer | 27 Aerator Laminar 5lpm
Cache TT |
| 14 Jumper valve | 28 Aerator key Cache TT |

installation

- All supply lines must be flushed thoroughly to remove debris prior to the installation of this product. Strainers (40 mesh) are recommended if debris is an ongoing problem.
- Pressure reduction valves may be required to comply with the recommended maximum supply pressure and/or balanced pressure requirements.
- It is recommended that isolation valves are installed on both hot and cold supplies prior to the tap and that these are easily accessible.

INSTALLATION PROCEDURE

1. Prepare tap holes on bench.
Tap body centres: minimum 150mm, maximum 300mm.
Drill hole sizes: 22 - 25mm for spout, 33 - 35mm for tap bodies. **SEE IMAGE 01**
2. Fit jumper valve [14] and fibre washer [13] onto SBA spindles [11,12], then screw SBA spindles into tap bodies [17]. Use the hex on the SBA spindle to tighten with a spanner. Do not overtighten. (Max. torque 30Nm.) **SEE IMAGE 02**
3. Pull the brass 1/2" threaded tail [24] off the copper tee piece [19]. Apply thread sealant to the non-bevelled end of the tail, then screw into the spout [21] and tighten. **SEE IMAGE 03**
4. To install the spout, fit O-ring [23] and dress ring [22], then fit the spout onto the bench. From underneath the bench, fit washer [25] and 1/2" brass back nut [26] onto the tail, then tighten the brass nut firmly using a spanner.
5. Assemble tap bodies [17] onto tee piece [19], measure the centres, and compare this to the centres of tap holes on bench. Cut the tee piece to the required length using tube cutters. **SEE IMAGE 04**
6. Fit compression nuts and assemble tap bodies onto tee piece. Note: hot/warm SBA is indicated by a groove in the spline of the spindle. Leave one set of fibre washers and back nuts [16] on tap bodies.

From underneath the bench, insert the tap bodies and tee piece assembly up through the bench, at the same time inserting the tee piece spigot up into the 1/2" brass tail of spout. Take care not to pinch or damage the o-rings in the process.

Fit clear plastic washers and back nuts [15] from above the bench, and fix tap bodies in place. Tighten back nuts and compression nuts [18] using a spanner. **SEE IMAGE 05**

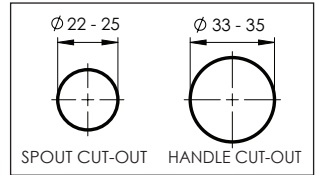


IMAGE 01

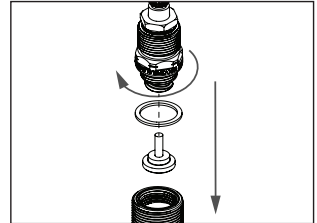


IMAGE 02

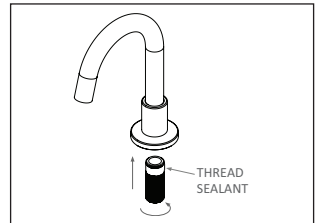


IMAGE 03

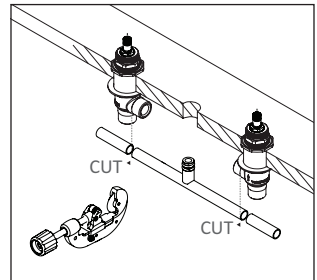


IMAGE 04

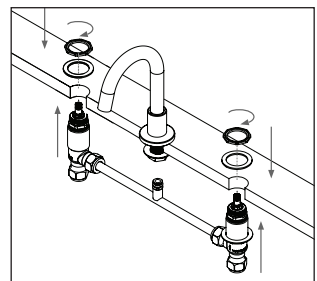


IMAGE 05

7. Fit spline adaptor [10] onto spindle [11,12]. Fit tooth washer [9] and washer [8], and fix in place using screw [7].

SEE IMAGE 06

8. Fit O-ring [6] and flange [5] onto SBA. **SEE IMAGE 07**

9. Fit colour indicator ring [4] onto lever handle [3]. To do this, place an indicator ring on flat surface with the rebated edge facing up. Press the lever handle down onto the indicator ring evenly until it clips into place. **SEE IMAGE 09-1**

If an indicator ring needs to be removed, place lever handle on a flat surface and apply pressure to the side of the indicator ring, until the ring pops off.

10. Fit lever handle onto spindle. Note the orientation of the tap handle. **SEE IMAGE 08**

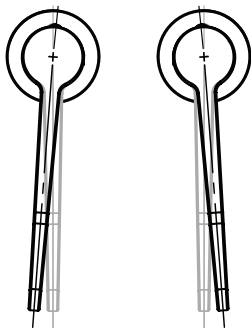
If the lever handles do not line up straight:

- a. Change the position of the spline adaptor [10] on the SBA spindle [11,12] in step 7.
- b. Adjust position of SBA spindle [11,12] by slightly tightening or loosening it, using a spanner on the hex of the SBA spindle. **SEE IMAGE 10**

Note: Do not adjust position of SBA using handle. Do not over-tighten SBA spindle. (Max. torque 30Nm.)

Fit handle parts back on.

- c. If lever handles do not line up parallel in the straight position, it is recommended to offset them away from the centre.



11. Fix lever handle in place with grub screw [2], then fit handle plug [1]. **SEE IMAGE 09-3**
12. Connect water supply to inlet of tap bodies [17]. Turn on water supply and test operation.

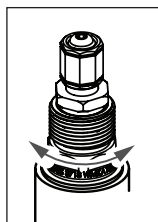


IMAGE 10

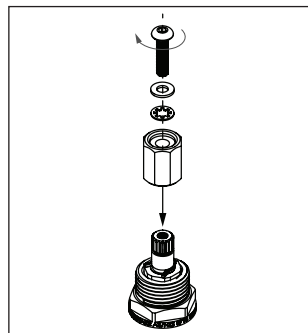


IMAGE 06

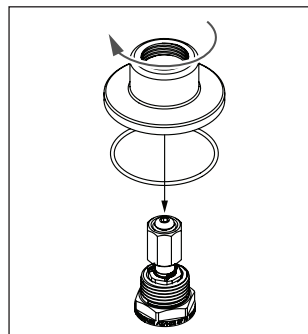


IMAGE 07

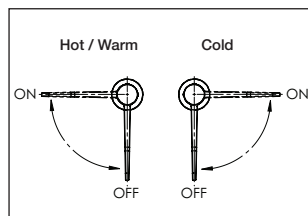


IMAGE 08

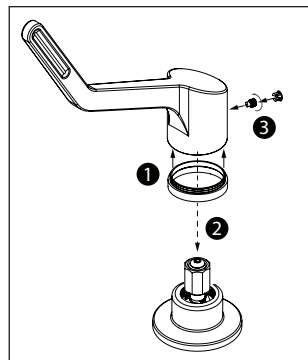
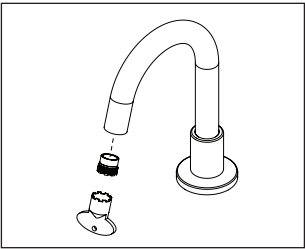


IMAGE 09

maintenance

CLEAN AERATOR

Clean aerator [27] periodically.
Unscrew the aerator using aerator key [28], and rinse it under running water.



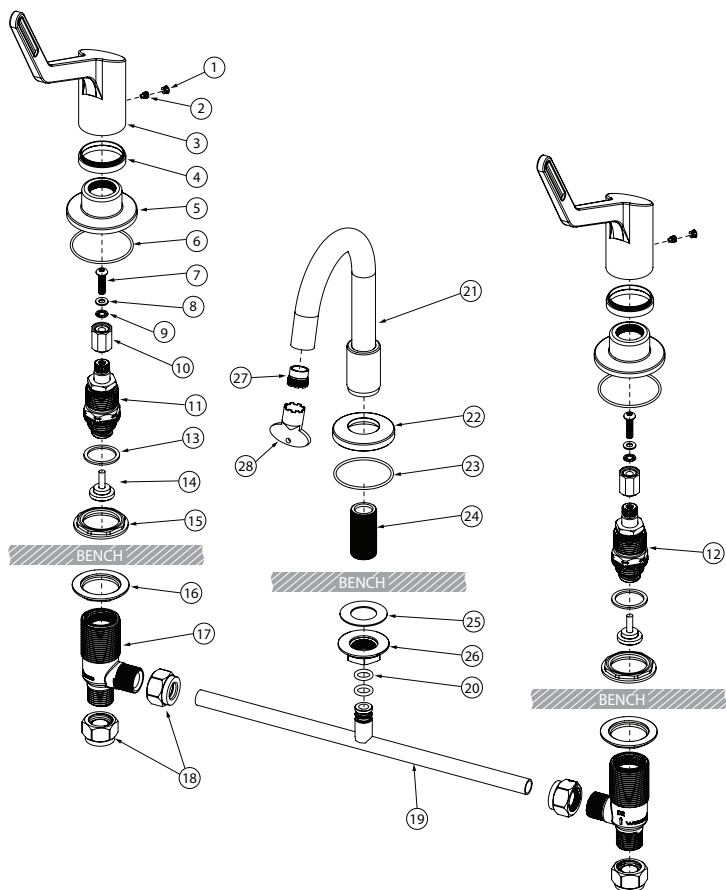
CLEANING

Enware products should be cleaned with a soft damp cloth using only mild liquid detergent or soap and water. Do not use cleaning agents containing a corrosive acid, scouring agent or solvent chemicals. Do not use cream cleaners, as they are abrasive. Use of unsuitable cleaning agents may damage the surface. Any damage caused in this way will not be covered by warranty.

troubleshooting

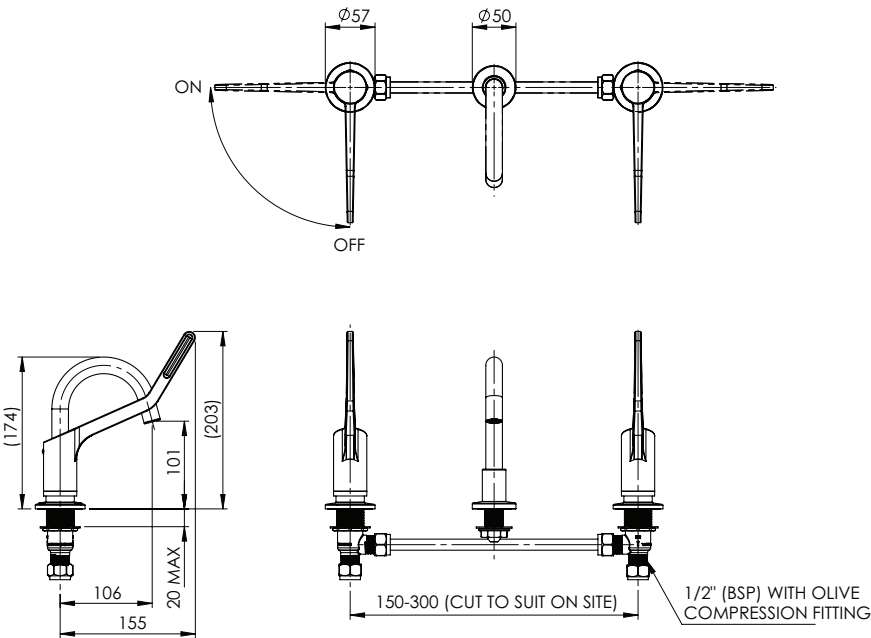
PROBLEM	CAUSE	RECTIFICATION
Water leaking from outlet Water dripping and does not shut off	Jumper valve has debris caught in the mechanism.	Remove SBA and inspect. Remove debris and clean. Install an inline strainer.
	Jumper valve is worn or damaged	Replace jumper valve.
	Tap seat is damaged	Refurbish tap seat using a reseating tool. If necessary, fit reseating kit or replace tap body / frame.
Water is leaking from spindle	Gland pack is loose	Tighten gland nut on SBA.
	Gland pack is damaged	Replace SBA.
Water is not flowing from tap	Water turned off.	Turn water on.
Poor water flow from outlet	Aerator / Flow control is blocked by debris.	Remove aerator from spout and clean debris. Install an inline strainer.
Handle does not align perfectly straight	Adjust position of spline adaptor or SBA. (See Installation - Step 10.) Due to handles being spline mounted, handles may be offset slightly from vertical or straight. This is normal and unavoidable.	

spare parts



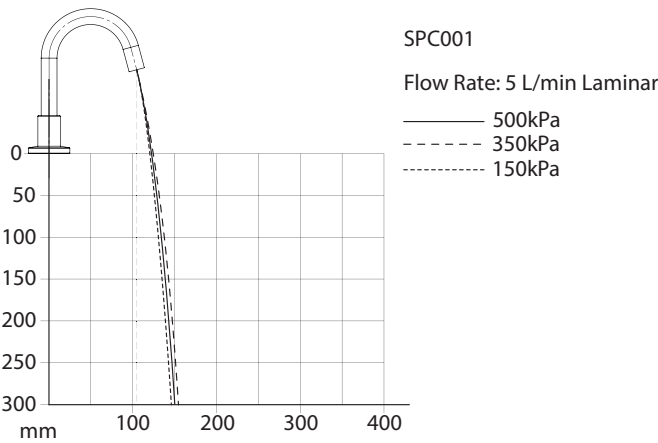
DESCRIPTION	PART CODE
Lever handle 150mm Parts: [1] [2] [3] [4-red,yellow,blue] [7] [8] [9] [10]	WLJS-150378
Colour indicators Parts: [4-red,yellow,blue]	WLJS398
SBA cold basin/ sink - RTC (Clockwise to close) Parts: [7] [8] [9] [12] [13] [14]	WLJS381RTC
SBA hot basin/ sink- LTC (Anti-clockwise to close) Parts: [7] [8] [9] [11] [13] [14]	WLJS381LTC
Spline adaptor Parts: [10]	890078
Aerator laminar insert with key - 5 L/min Cache TT Parts: [27] [28]	SPC50LF
Aerator laminar insert with key - 3.8 L/min Cache TT Parts: [27] [28]	SPC38AF
Basin spout Parts: [21] [22] [23] [24] [25] [26] [27] [28]	SPC001
Back nuts, washers, compression nuts kit Parts: [15 x2] [16 x2] [18 x4] [25] [26]	WLCSFIX
Grub screws Parts: [2 x4]	FS734

dimensions



All measurements are in millimetres.

Water Flow Projection



product warranty statement - WATTS AUSTRALIA

Effective 27 October 2023

This Warranty Statement applies to products supplied by Australian Valve Group Pty Ltd (ACN 068 227 270) (**AVG**) or Enware Pty Ltd (ACN 662 302 767) (**Enware**) (each of AVG and Enware, a Supplier) and installed within Australia.

Subject to the terms and conditions outlined in this Warranty Statement, each Supplier warrants to its customers that a product supplied by it (**Product**) will be free from all defects in material and workmanship under normal usage for the applicable Warranty Period (as set out in the Warranty Table below). The Warranty Period commences from the date of delivery of the relevant Product.

1. Conditions

The warranty provided under this Warranty Statement will not apply in respect of a Product (or any Product defect, fault or resulting damage) if:

- (a) the Product is not installed and maintained in accordance with the requirements of the applicable laws, standards and codes (including, without limitation to, the National Construction Code Volume Three – Plumbing Code of Australia, associated reference standards as applicable at the time and AS/NZS 3500);
- (b) the Product is not installed and maintained by a qualified technician in accordance with the relevant installation and operation manual and instructions; and
- (c) any Product defect, faulty or resulting damage arises from:
 - (i) failure by you or any other person to follow the relevant manual or instructions (relating to the handling, storage, installation, fitting, connection, adjustment, maintenance or repair of the Product) published or provided by the Supplier;
 - (ii) failure by you or any other person responsible for the fitting, installation, or other work on the Product to follow or conform to applicable laws, standards and codes (including, without limitation to, the AS/NZ 3500 set of Standards, all applicable State and Territory Plumbing Codes, the Plumbing Code of Australia and directions and requirements of local and other statutory authorities);
 - (iii) any parts or components not manufactured by the Supplier (or otherwise not authorised by the Supplier) are installed or combined with the Product, without the prior authorisation of the Supplier; or
 - (iv) any act or circumstance beyond our control including, without limitation to, accident, abnormal use, vandalism, fouling caused by foreign material, damage from adverse water conditions, chemical, acts of God, damage to buildings, other structures and infrastructure and loss or damage during transit or transportation of the Product, or any abuse, misuse, misapplication, improper installation or connection, or improper maintenance or alteration of the Product.

2. Make a claim

To make a claim under this Warranty Statement, you must notify the relevant Supplier in writing within 7 days of any alleged defect in the Product coming to your attention and provide the Supplier with proof of your purchase of the Product to the relevant Supplier:

- (a) If the Product is supplied by **AVG**, please contact AVG by telephone at 1800 284 287, or by email via its online portal <https://www.wattsau.com.au/support>.
- (b) If the Product is supplied by **Enware**, please complete the Product Service Request form (ENF091), which is available on request from our office (see contact details below), or online via <https://www.enware.com.au/warranty-service-form/>. All notifications and accompanying forms must be sent to Enware marked for the attention of Enware, 9 Endeavour Road, Caringbah NSW 2229. Enware can also be contacted by telephone (1300 369 273) or by email (info@enware.com.au).

On receipt of a notification from you of a claim under this Warranty Statement, the relevant Supplier may contact you requesting you provide reasonably additional evidence, information or details about your claim, or requiring that the relevant Product should be returned to the Supplier (in accordance with the Supplier's instructions) for inspection and testing.

Your failure to comply with any such request within a reasonable amount of time may result in your claim under this Warranty Statement being rejected.

3. Our responsibilities

(a) In the event that the Supplier is reasonably satisfied that there is a defect in the relevant Product within the applicable Warranty Period, the Supplier will, at its option, replace the Product, supply an equivalent product or repair the Product, free of charge. Your costs in making a warranty claim under this Warranty Statement, including any costs in relation to freight, collection, delivery and installation, are to be borne and paid by you. However, if in respect of a Product, it is indicated in the Warranty Table that labour support will be provided, and the Supplier is reasonably satisfied that a defect in the Product takes place during the period that labour support will be provided as indicated in the Warranty Table, the Supplier will bear the costs for delivery, repair and installation of the replacement Product (as applicable).

(b) TO THE EXTENT PERMITTED BY LAW AND SUBJECT TO PARAGRAPH 4 BELOW AND THE OPERATION OF THE AUSTRALIAN CONSUMER LAW:

- (i) THE WARRANTY SET OUT IN THIS WARRANTY STATEMENT IS GIVEN EXPRESSLY AND IS THE ONLY WARRANTY GIVEN BY THE SUPPLIER WITH RESPECT TO THE RELEVANT PRODUCT;
- (ii) THE SUPPLIER MAKES NO OTHER WARRANTIES, EXPRESS OR IMPLIED;
- (iii) THE SUPPLIER HEREBY SPECIFICALLY DISCLAIMS ALL OTHER WARRANTIES, EXPRESS OR IMPLIED, INCLUDING BUT NOT LIMITED TO, THE IMPLIED WARRANTIES OF MERCHANTABILITY AND FITNESS FOR A PARTICULAR PURPOSE; AND
- (iv) THE REMEDY DESCRIBED IN THIS WARRANTY STATEMENT SHALL CONSTITUTE THE SOLE AND EXCLUSIVE REMEDY FOR BREACH OF WARRANTY, AND THE SUPPLIER SHALL NOT BE RESPONSIBLE FOR ANY INCIDENTAL, SPECIAL OR CONSEQUENTIAL DAMAGES, OR LOST PROFITS OR THE COST OF REPAIRING OR REPLACING OTHER PROPERTY WHICH IS DAMAGED IF THE PRODUCT DOES NOT WORK PROPERLY.

4. Australian Consumer Law

This paragraph 4 applies if you are a 'Consumer' (as defined in section 3 of the Australian Consumer Law (**ACL**)) and the Product or services supplied to you falls within the goods or services which, for the purposes of the ACL, are of a kind ordinarily acquired for personal, domestic or household use or consumption.

The Products and services provided by the Supplier come with guarantees that cannot be excluded under the ACL, and noting in this Warranty Statement should be interpreted as attempting to exclude, restrict or modify such guarantees or your rights under the ACL. For major failures with any services, you are entitled:

- (c) to cancel your service contract with us; and
- (d) to a refund for the unused portion, or to compensation for its reduced value.

You are also entitled to choose a refund or replacement for major failures with Products. If a failure with the Product or a service does not amount to a major failure, you are entitled to have the failure rectified in a reasonable time. If this is not done you are entitled to a refund for the Products and to cancel the contract for the service and obtain a refund of any unused portion. You are also entitled to be compensated for any other reasonably foreseeable loss or damage from a failure in the Products or service*.

5. Warranty table

*the applicable period commences on the date of purchase of the Product.

PRODUCT GROUP	PRODUCT SERIES CODES	WARRANTY PERIOD (YEARS)*	LABOUR SUPPORT (YEARS)*
General Tapware, Spouts & Outlets- Chrome Plated	WLC	10	2