

School Pattern Basin / Sink Set

Installation and Maintenance Instructions

VP306
VP307
VPQ306



technical data

Jumper Valve		Ceramic Disc	
Working Pressure Range	Min 50 kPa Max 500 kPa	Working Pressure Range	Min 50 kPa Max 500 kPa
Maximum Static Pressure	1200 kPa	Maximum Static Pressure	800 kPa
Maximum Working Temperature	95°C	Maximum Working Temperature	85°C

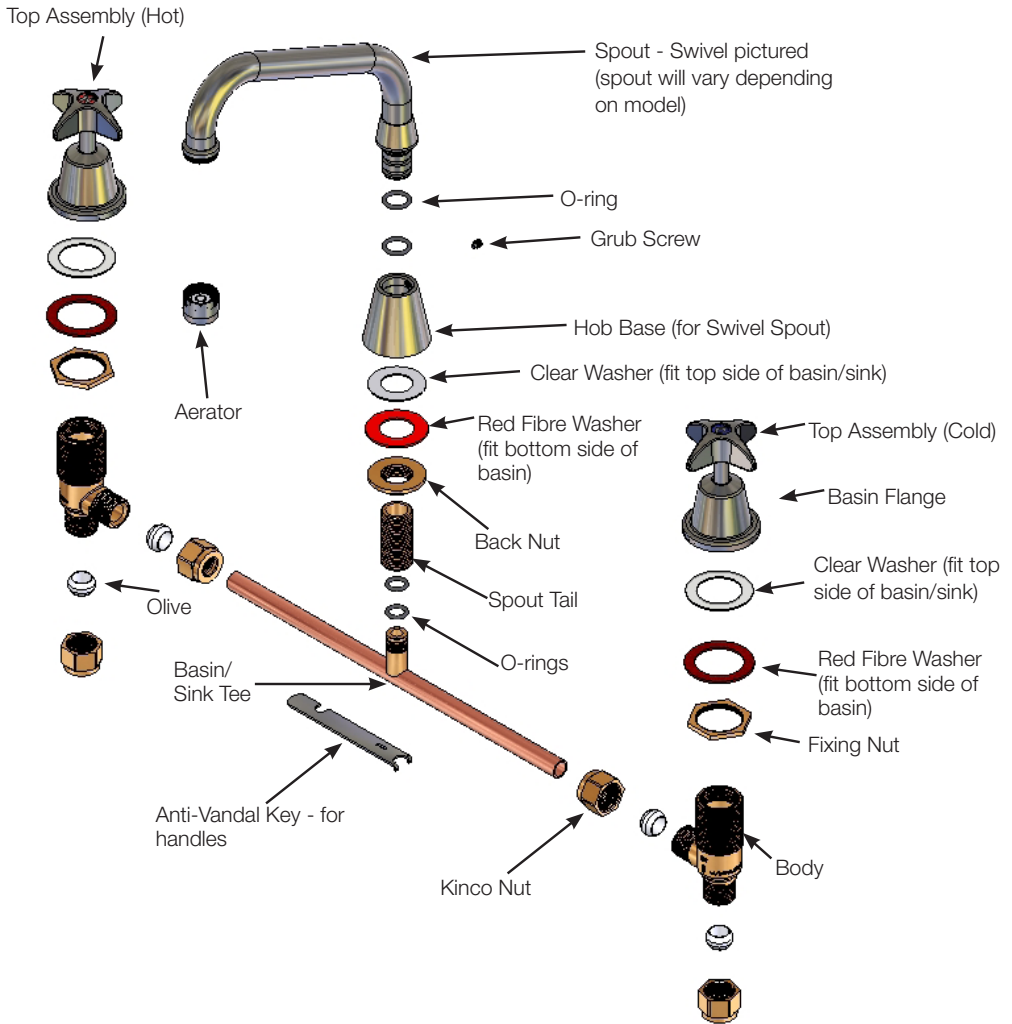
Enware products are to be installed in accordance with the Plumbing Code of Australia (PCA) and AS/NZS3500. Installations not complying with PCA and AS/NZS 3500 may void the product and performance warranty provisions.

Reference should also be made to the Australasian Health Facility Guidelines (AHFG), ABCB and Local Government regulations when considering the choice of, and the installation of these products.

This product must be installed and commissioned by a qualified plumber.

For use with potable water only.

- NOTE: Enware Australia advises:
1. Due to ongoing Research and Development, specifications may change without notice.
 2. Component specifications may change on some export models.



Exploded component view | Shown with sink spout

installation

- All supply lines must be flushed thoroughly to remove debris prior to the installation of this product, as per AS/NZS 3500.1. Strainers (40 mesh) are recommended if debris is an ongoing problem.
- A pressure reduction valve may be required to comply with the recommended maximum supply pressure and/or balanced pressure requirements.
- It is recommended that isolation valves are installed on both hot and cold supplies prior to the tap and that these are easily accessible.

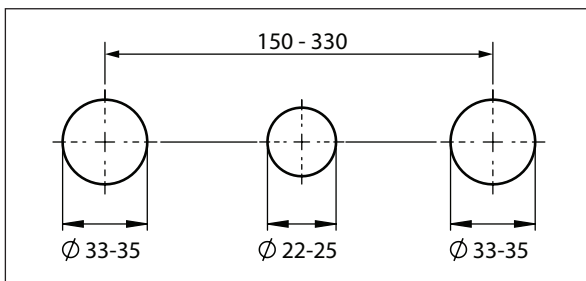


IMAGE 01

1. Prepare tap holes on bench or basin. **SEE IMAGE 01**

Tap hole sizes:

- 1x hole diameter 22 - 25mm for spout,
- 2x holes diameter 33 - 35mm for tap bodies

Tap body centres: Min 150mm - Max 330mm

Maximum bench thickness: 20mm

2. Fit 1/2" tail into base of spout: Apply thread sealing tape onto the non-bevelled end of 1/2" BSP all-thread tail, and screw into female thread of base. **SEE IMAGE 02**
3. Fit fibre washer to spout base, then fit spout base onto the bench. Fix the spout base in place using 1/2" brass nut from underneath the bench. **SEE IMAGE 03**

4. JUMPER VALVE:

Fit jumper valve and fibre washer onto SBA spindles, then screw SBA spindles into tap bodies. Use the hex on the SBA spindle to tighten with a spanner. Do not overtighten. (Max. torque 30Nm.) **SEE IMAGE 04**

CERAMIC DISC:

Take locknut off SBA spindles. Screw SBA spindles into tap bodies. Use the hex on the SBA spindle to tighten with a spanner. Do not overtighten. (Max. torque 18Nm.) Fit fibre washer onto SBA spindle and screw locknut onto SBA spindle. Tighten locknut with a spanner. (Max. torque 30Nm) **SEE IMAGE 05**

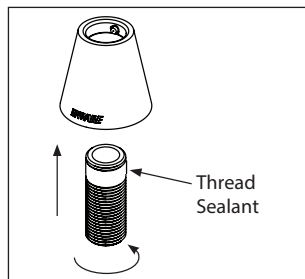


IMAGE 02

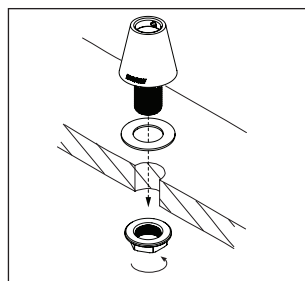


IMAGE 03

Jumper Valve
Top Assembly

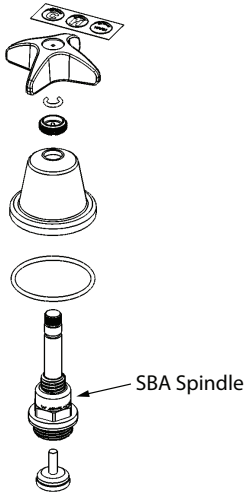


IMAGE 04

Ceramic Disc
Top Assembly

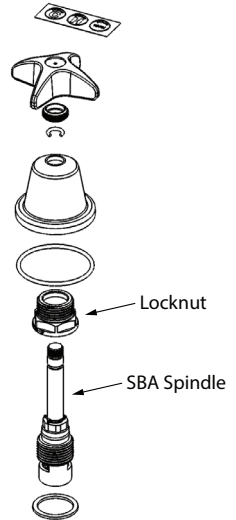


IMAGE 05

5. Assemble tap bodies onto tee piece, measure the centres, and compare this to the centres of tap holes on bench. Cut the tee piece to the required length using tube cutters. **SEE IMAGE 06**

6. Assemble tap bodies onto tee piece. Fit one set of fibre washer and back nut onto each tap body.

7. From underneath the bench, insert the tap bodies and tee piece assembly up through the bench, at the same time inserting the tee piece spigot up into the 1/2" brass tail of spout. Take care not to pinch or damage the O-rings in the process.

Fit clear plastic washers and back nuts from above the bench, and fix tap bodies in place. Tighten back nuts and compression nuts using a spanner. **SEE IMAGE 07**

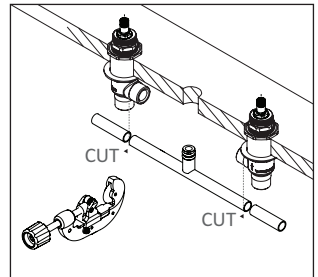


IMAGE 06

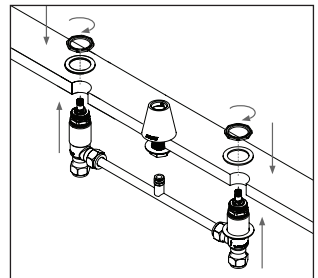


IMAGE 07

8. Fit O-ring and dome onto SBA. **SEE IMAGE 08**
9. Place the insert onto the spindle, and then place the circlip in the groove on the spindle. **SEE IMAGE 09**
10. Place the handle onto the spline of the spindle, then use the spanner key provided to secure the insert with the bottom of the handle. **SEE IMAGE 10 & 11**
11. Fit indicator button onto handle.

To do this, ensure the surface of handle is clean and dry, free of dust, moisture and grease.

Peel off the indicator button from its backing paper, taking care not to touch the adhesive side.

Place the indicator button onto flat section of the handle, and push the button firmly onto handle.

SEE IMAGE 12

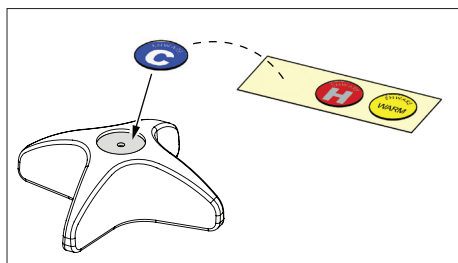


IMAGE 12

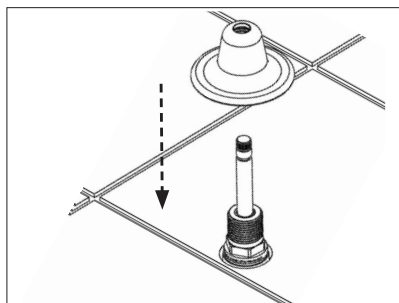


IMAGE 08

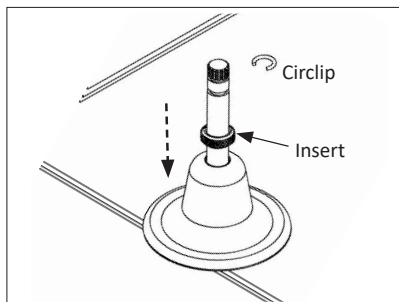


IMAGE 09

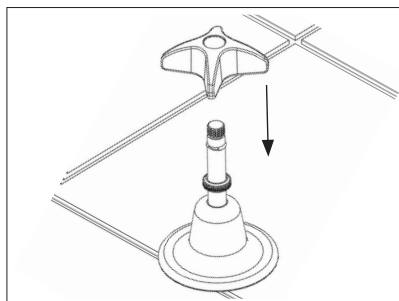


IMAGE 10

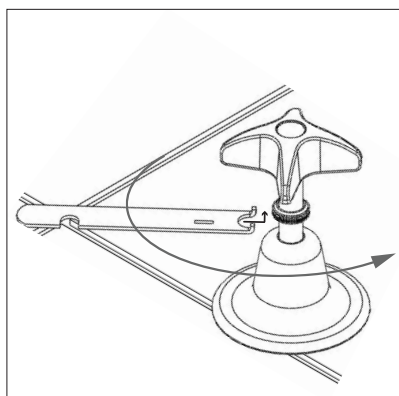


IMAGE 11

12. Connect hot and cold water supply lines to the tap bodies.
13. Turn water on and check for leaks at all connection points.

maintenance

CLEANING

Enware products should be cleaned with a soft damp cloth using only mild liquid detergent or soap and water. Do not use cleaning agents containing a corrosive acid, scouring agent or solvent chemicals. Do not use cream cleaners, as they are abrasive. Use of unsuitable cleaning agents may damage the surface. Any damage caused in this way will not be covered by warranty.

spare parts

PART	ENWARE SALES CODE
SBA - VP Basin / Sink Jumper Valve	VP381
SBA - VPQ Basin / Sink Ceramic Disc 1/2 Turn	VPQ381
Top Assembly - Basin / Sink Jumper Valve (handle, SBA & dome)	VP391
Top Assembly - Basin / Sink Ceramic Disc (handle, SBA & dome)	VPQ391
School Pattern (VP) handle (incl. circlip, handle insert, blue colour indicator, Anti-Vandal handle key)	VP378
Anti-vandal handle key	MIS590
Colour indicator button (stick-on, Cold, Warm and Hot included)	MIS595RYB
Basin spout fixed - 100mm reach	SP001
Sink spout - swivel 180mm reach	SP010
Aerator - 8lpm	SP301
Grub screws (4), spout O-rings (8) & aerator	FS734

troubleshooting

PROBLEM	CAUSE	RECTIFICATION
Water leaking from outlet Water dripping and does not shut off	Jumper valve / SBA spindle has debris caught in the mechanism.	Remove SBA and inspect. Remove debris and clean. Install an inline strainer.
	Tap seat is damaged	Refurbish tap seat using a reseating tool. If necessary, fit reseating kit or replace tap body.
	Jumper valve is worn or damaged	Replace jumper valve.
	SBA ceramic discs are worn or damaged	Replace SBA.
Water is leaking from spindle	O-ring on SBA is worn or damaged	Replace O-ring. Replace SBA.
Water is not flowing from tap	Water turned off.	Turn water on.
Poor water flow from outlet	Aerator / Flow control is blocked by debris.	Remove flow control and clean debris. Install an inline strainer.
Handle is wobbly Handle feels loose	Circlip missing Circlip not fitted into the correct groove Handle insert not tightened	Ensure circlip is in place Reposition circlip into the correct groove on the spindle Tighten insert using key
Spindle is difficult to turn (jumper valve)	Build up of scale on spindle, spindle worn or o-ring has been damaged	Jumper valve spindle needs to be removed, cleaned and re-greased. O-ring to be replaced. Complete SBA may need to be replaced.

product warranty statement - WATTS AUSTRALIA

Effective 27 October 2023

This Warranty Statement applies to products supplied by Australian Valve Group Pty Ltd (ACN 068 227 270) (**AVG**) or Enware Pty Ltd (ACN 662 302 767) (**Enware**) (each of AVG and Enware, a Supplier) and installed within Australia.

Subject to the terms and conditions outlined in this Warranty Statement, each Supplier warrants to its customers that a product supplied by it (**Product**) will be free from all defects in material and workmanship under normal usage for the applicable Warranty Period (as set out in the Warranty Table below). The Warranty Period commences from the date of delivery of the relevant Product.

1. Conditions

The warranty provided under this Warranty Statement will not apply in respect of a Product (or any Product defect, fault or resulting damage) if:

- (a) the Product is not installed and maintained in accordance with the requirements of the applicable laws, standards and codes (including, without limitation to, the National Construction Code Volume Three – Plumbing Code of Australia, associated reference standards as applicable at the time and AS/NZS 3500);
- (b) the Product is not installed and maintained by a qualified technician in accordance with the relevant installation and operation manual and instructions; and
- (c) any Product defect, faulty or resulting damage arises from:
 - (i) failure by you or any other person to follow the relevant manual or instructions (relating to the handling, storage, installation, fitting, connection, adjustment, maintenance or repair of the Product) published or provided by the Supplier;
 - (ii) failure by you or any other person responsible for the fitting, installation, or other work on the Product to follow or conform to applicable laws, standards and codes (including, without limitation to, the AS/NZ 3500 set of Standards, all applicable State and Territory Plumbing Codes, the Plumbing Code of Australia and directions and requirements of local and other statutory authorities);
 - (iii) any parts or components not manufactured by the Supplier (or otherwise not authorised by the Supplier) are installed or combined with the Product, without the prior authorisation of the Supplier; or
 - (iv) any act or circumstance beyond our control including, without limitation to, accident, abnormal use, vandalism, fouling caused by foreign material, damage from adverse water conditions, chemical, acts of God, damage to buildings, other structures and infrastructure and loss or damage during transit or transportation of the Product, or any abuse, misuse, misapplication, improper installation or connection, or improper maintenance or alteration of the Product.

2. Make a claim

To make a claim under this Warranty Statement, you must notify the relevant Supplier in writing within 7 days of any alleged defect in the Product coming to your attention and provide the Supplier with proof of your purchase of the Product to the relevant Supplier:

- (a) If the Product is supplied by **AVG**, please contact AVG by telephone at 1800 284 287, or by email via its online portal <https://www.watssa.com.au/support>.
- (b) If the Product is supplied by **Enware**, please complete the Product Service Request form (ENF091), which is available on request from our office (see contact details below), or online via <https://www.enware.com.au/warranty-service-form>. All notifications and accompanying forms must be sent to Enware marked for the attention of Enware, 9 Endeavour Road, Caringbah NSW 2229. Enware can also be contacted by telephone (1300 369 273) or by email (info@enware.com.au).

On receipt of a notification from you of a claim under this Warranty Statement, the relevant Supplier may contact you requesting you provide reasonably additional evidence, information or details about your claim, or requiring that the relevant Product should be returned to the Supplier (in accordance with the Supplier's instructions) for inspection and testing.

Your failure to comply with any such request within a reasonable amount of time may result in your claim under this Warranty Statement being rejected.

3. Our responsibilities

(a) In the event that the Supplier is reasonably satisfied that there is a defect in the relevant Product within the applicable Warranty Period, the Supplier will, at its option, replace the Product, supply an equivalent product or repair the Product, free of charge. Your costs in making a warranty claim under this Warranty Statement, including any costs in relation to freight, collection, delivery and installation, are to be borne and paid by you. However, if in respect of a Product, it is indicated in the Warranty Table that labour support will be provided, and the Supplier is reasonably satisfied that a defect in the Product takes place during the period that labour support will be provided as indicated in the Warranty Table, the Supplier will bear the costs for delivery, repair and installation of the replacement Product (as applicable).

(b) TO THE EXTENT PERMITTED BY LAW AND SUBJECT TO PARAGRAPH 4 BELOW AND THE OPERATION OF THE AUSTRALIAN CONSUMER LAW:

(i) THE WARRANTY SET OUT IN THIS WARRANTY STATEMENT IS GIVEN EXPRESSLY AND IS THE ONLY WARRANTY GIVEN BY THE SUPPLIER WITH RESPECT TO THE RELEVANT PRODUCT;

(ii) THE SUPPLIER MAKES NO OTHER WARRANTIES, EXPRESS OR IMPLIED;

(iii) THE SUPPLIER HEREBY SPECIFICALLY DISCLAIMS ALL OTHER WARRANTIES, EXPRESS OR IMPLIED, INCLUDING BUT NOT LIMITED TO, THE IMPLIED WARRANTIES OF MERCHANTABILITY AND FITNESS FOR A PARTICULAR PURPOSE; AND

(iv) THE REMEDY DESCRIBED IN THIS WARRANTY STATEMENT SHALL CONSTITUTE THE SOLE AND EXCLUSIVE REMEDY FOR BREACH OF WARRANTY, AND THE SUPPLIER SHALL NOT BE RESPONSIBLE FOR ANY INCIDENTAL, SPECIAL OR CONSEQUENTIAL DAMAGES, OR LOST PROFITS OR THE COST OF REPAIRING OR REPLACING OTHER PROPERTY WHICH IS DAMAGED IF THE PRODUCT DOES NOT WORK PROPERLY.

4. Australian Consumer Law

This paragraph 4 applies if you are a 'Consumer' (as defined in section 3 of the Australian Consumer Law (ACL)) and the Product or services supplied to you falls within the goods or services which, for the purposes of the ACL, are of a kind ordinarily acquired for personal, domestic or household use or consumption.

The Products and services provided by the Supplier come with guarantees that cannot be excluded under the ACL, and noting in this Warranty Statement should be interpreted as attempting to exclude, restrict or modify such guarantees or your rights under the ACL. For major failures with any services, you are entitled:

- (c) to cancel your service contract with us; and
- (d) to a refund for the unused portion, or to compensation for its reduced value.

You are also entitled to choose a refund or replacement for major failures with Products. If a failure with the Product or a service does not amount to a major failure, you are entitled to have the failure rectified in a reasonable time. If this is not done you are entitled to a refund for the Products and to cancel the contract for the service and obtain a refund of any unused portion. You are also entitled to be compensated for any other reasonably foreseeable loss or damage from a failure in the Products or service.

5. Warranty table

*the applicable period commences on the date of purchase of the Product.

PRODUCT GROUP	PRODUCT SERIES CODES	WARRANTY PERIOD (YEARS)*	LABOUR SUPPORT (YEARS)*
General Tapware, Spouts & Outlets- Chrome Plated	VP/VPQ/VPL	10	2