

Wall Mounted Curved Spout 235mm

Enware's Classic range of outlets combine function with style and are designed for superior performance. Crafted from DR (Dezincification Resistant) Brass, Enware Classic outlets deliver proven durability.

KEY FEATURES

- Bright Chrome standard finish
- Full Swivel or Restricted Swivel (approx. 90 degree) options available to suit your application
- Includes 5 Star WELS rating (6 L/min) aerator (fitted) and WELS 6 Star (3.8 L/min) aerator (supplied in carton)
- Lead free brass



PRODUCT CODES

SP126	Curved Spout - Swivel
SP126R	Curved Spout - Restricted Swivel



Due to ongoing Research and Development, specifications may change without notice. Component specifications may change on some export models.

Refer to warranty statement for warranty details - www.enware.com.au/warranty.

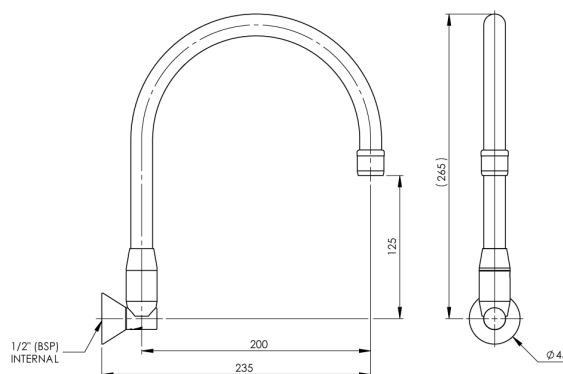
Products are to be installed in accordance with the Plumbing Code of Australia and AS/NZS3500.

Reference should also be made to the Australasian Health Facility Guidelines (AHFG), ABCB and Local Government regulations when considering the choice of, and the installation of these products.

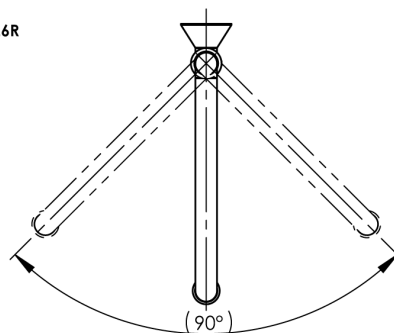
Wall Mounted Curved Spout 235mm

TECHNICAL DATA

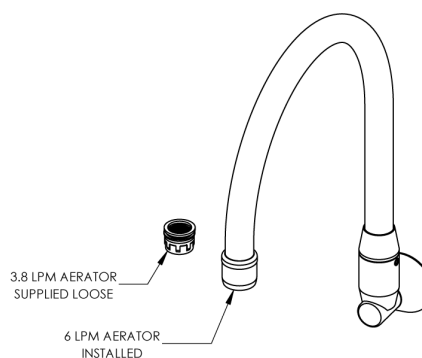
WELS Category	Tapware
Standard WELS	5 Stars
Standard WELS Flow Rate	6 L/min
First Additional WELS	6 Stars
First Additional WELS Flow Rate	3.8 L/min
Finish	Chrome
Maximum Recommended Pressure	500kPa
Inlet Connection	1/2" BSP Female



SP126R



TOP VIEW



SPARE PARTS

SP192	Spare Parts: Wall Mounted - Spout Base - Classic Outlet Range
SP301	Spare Parts: Aerator - M22x1 F/Male - No.1 - Standard