

Enware-Oras Safira In-Wall Compact Shower Mixer

Installation and Maintenance Instructions

SAF608



I00346_FEB 23

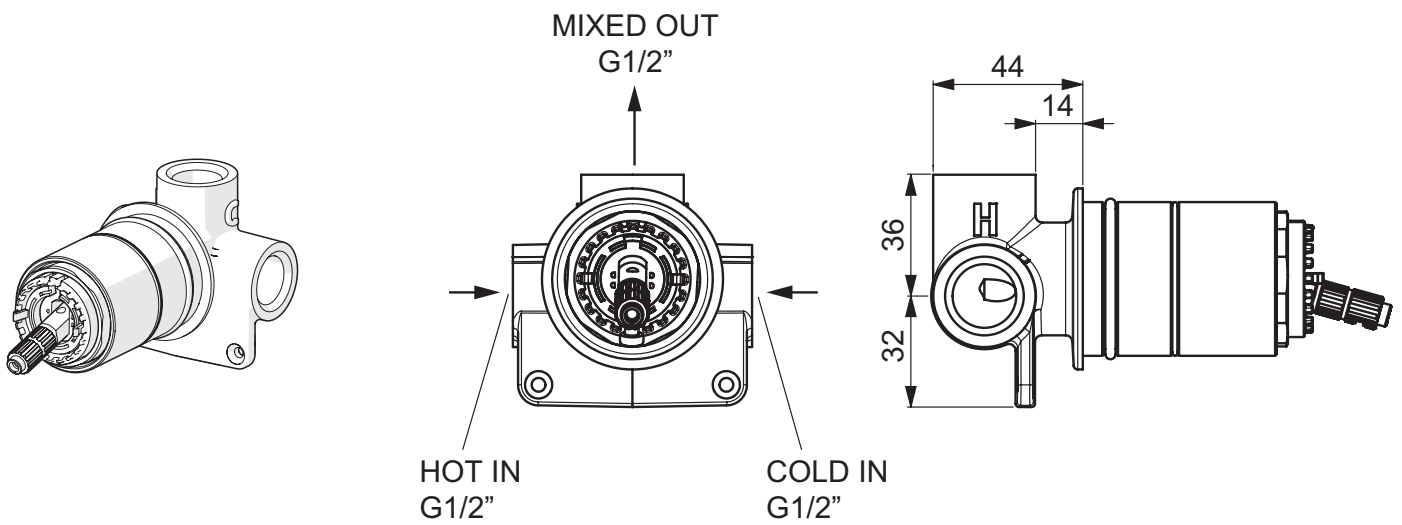
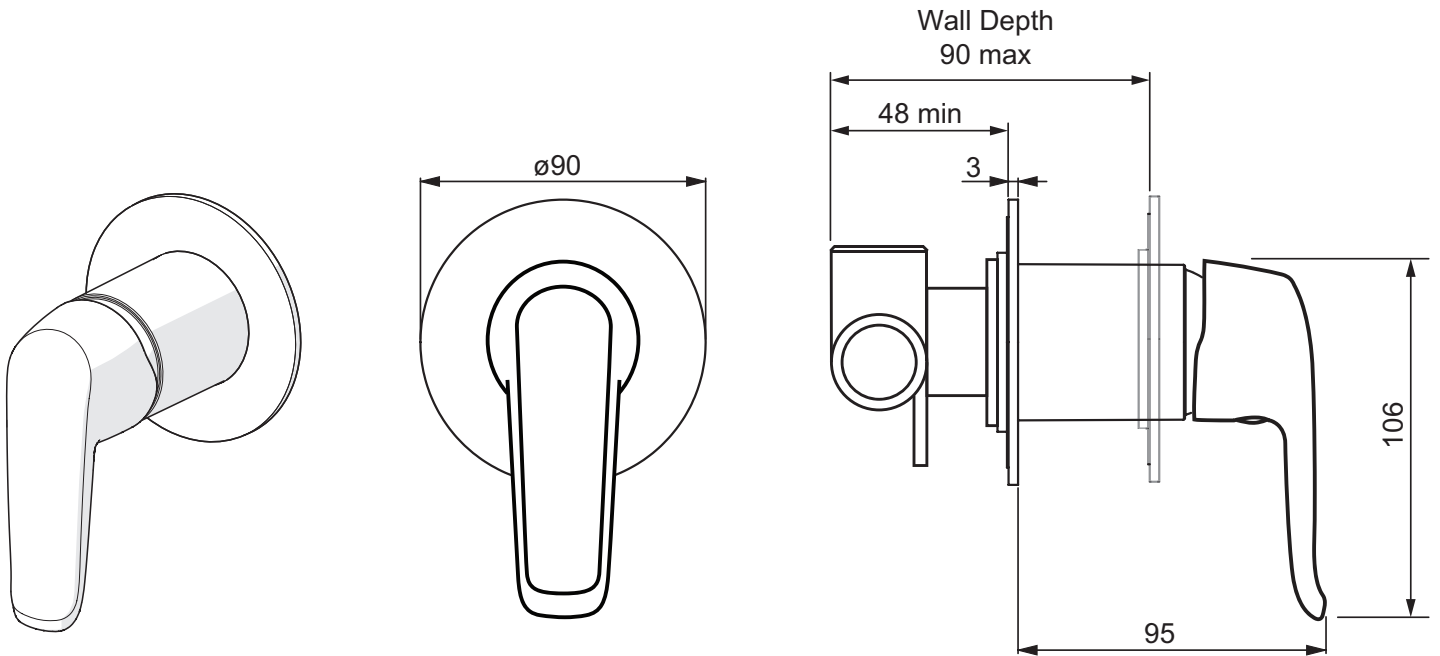
Call 1300 369 273
www.enware.com.au

Enware Australia
9 Endeavour Rd Caringbah NSW 2229 Australia
Ph: 02 8536 4000 info@enware.com.au



dimensions

SAF608



All measurements are in millimetres.

technical data

Inlet Connection	15mm (1/2" BSP)
Recommended Working Pressure Range	50 - 500 kPa Hot and cold water inlet pressures should be balanced
Static Inlet Pressure	50 - 1000 kPa Maximum 1600 kPa for testing purposes only
Operating Temperature Range	0 - 80 °C
Wall Depth	48 - 90mm

installation compliance

Enware products are to be installed in accordance with the Plumbing Code of Australia (PCA) and AS/NZS3500. Installations not complying with PCA and AS/NZS 3500 may void the product and performance warranty provisions.

Reference should also be made to the Australasian Health Facility Guidelines (AHFG), ABCB and Local Government regulations when considering the choice of, and the installation of these products.

This product must be installed and commissioned by a qualified plumber.

For use with potable water only.

NOTE: Enware Australia advises:

1. Due to ongoing Research and Development, specifications may change without notice.
2. Component specifications may change on some export models.

installation

- All supply lines must be flushed thoroughly to remove debris prior to the installation of this product, as per AS/NZS 3500.1. Strainers (40 mesh) are recommended if debris is an ongoing problem.
- A pressure reduction valve may be required to comply with the recommended maximum supply pressure and/or balanced pressure requirements.

IN-WALL BODY COMPONENT

1. Secure the shower body to the internal cavity within the wall.

Wall depth: minimum 48mm – maximum 90mm from finished wall surface. Finished wall markings are indicated on the protective cover.

This shower cannot be installed sideways, or upside down. The mixer body must be installed in the correct direction, with the shower outlet aligned in the vertical plane facing up, to ensure the handle points downwards. The handle can only be installed in one way – once the mixer body is installed the handle cannot be flipped upside down or sideways contrary to the mixer body in wall.

The shower body has a protective cover which should be left on until the wall is finished.

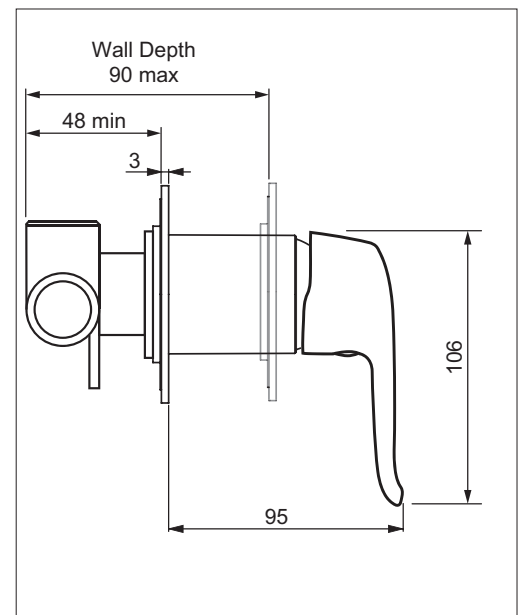


IMAGE 01

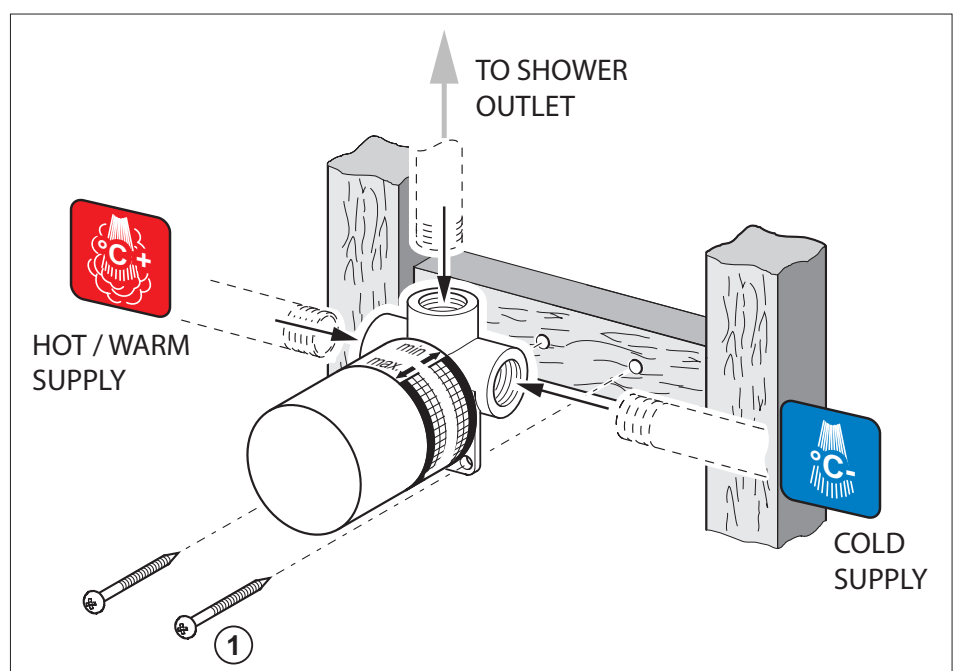


IMAGE 02

2. Connect water supply to the hot and cold inlets.
3. Connect the mixer shower outlet to the riser leading to shower rose/outlet.

WARNING: Heat must not be applied to the inlets and outlet of the mixer as this will result in damage to the cartridge and void the warranty.

4. Turn on water to the mixer and test for leaks. Take off the protective cover and loosely place lever handle on stem of mixer cartridge to test the outlet line.
5. Maximum static pressure - 1600 kPa for pressure testing purposes only.
6. Fit protective cover back on the body, and leave it on until the wall is finished.



FIT-OFF – FACIA AND HANDLE

1. After the wall is finished, take off protective cover. SEE IMAGE 03
2. Slide chrome sleeve over mixer body.
3. Seal any gaps between the wall cut-out and shower body with neutral cure silicone sealant. SEE IMAGE 04
4. Put on self-adhesive seal on cover plate.
5. Slide cover plate over the cartridge sleeve and push firmly against the wall. SEE IMAGE 05
6. Fit handle onto the cartridge stem. Place the screw through the hole under the handle lever, and tighten to fix the handle in place. SEE IMAGE 05
7. Push the handle plug onto handle.
8. Turn water on and test for leaks. Test the mixer tap and check for correct operation.

IMAGE 03

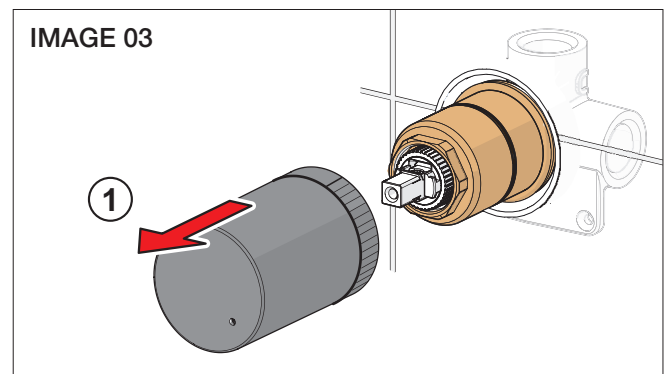


IMAGE 04

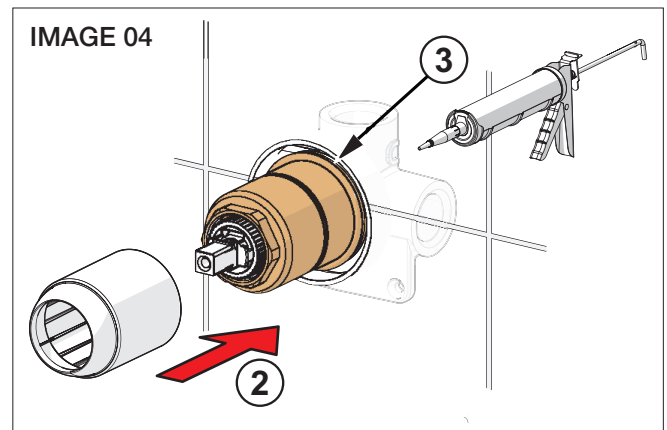
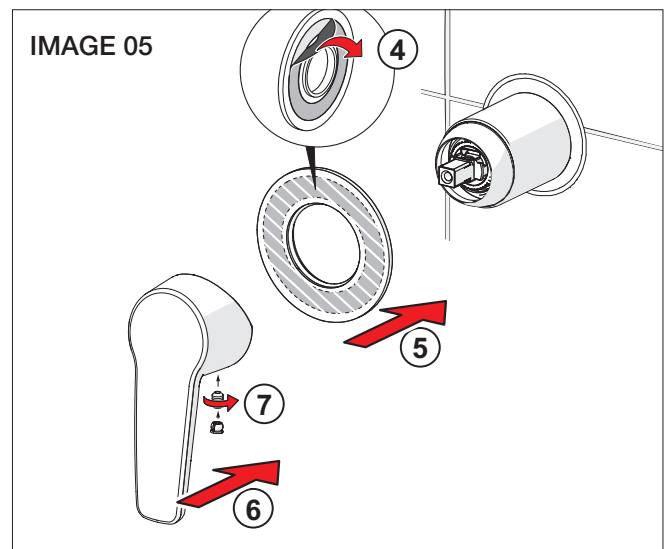


IMAGE 05



operation

- To turn water on, lift handle up.
- To turn water off, lower handle down.
- Turn handle to the left for hot or warm water.
- Turn handle to the right for cold water.

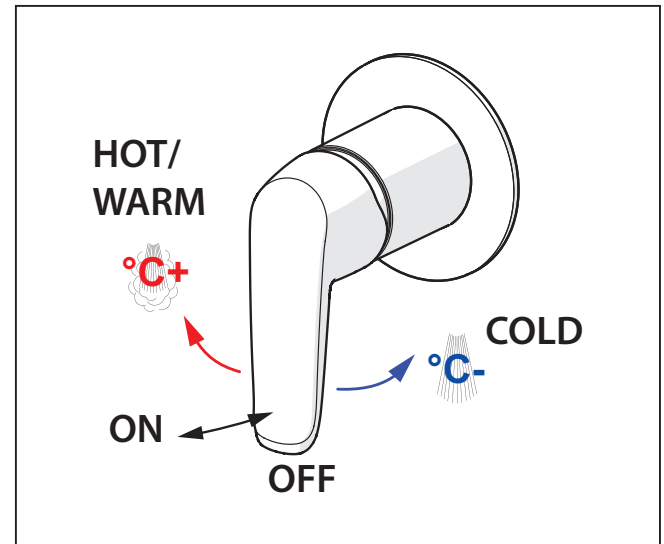


IMAGE 06

limiting the flow rate

The lever handle lift angle can be limited to reduce the maximum water flow. This can be done without shutting off water supply to the tap.

Take off the handle and chrome cover cap, then turn the screw located inside the spindle. To limit to a lower flow (i.e. smaller handle lift angle), tighten the screw clockwise until the screw protrudes past the spindle on the other side. The screw limits the travel of the lever handle. SEE IMAGE 07

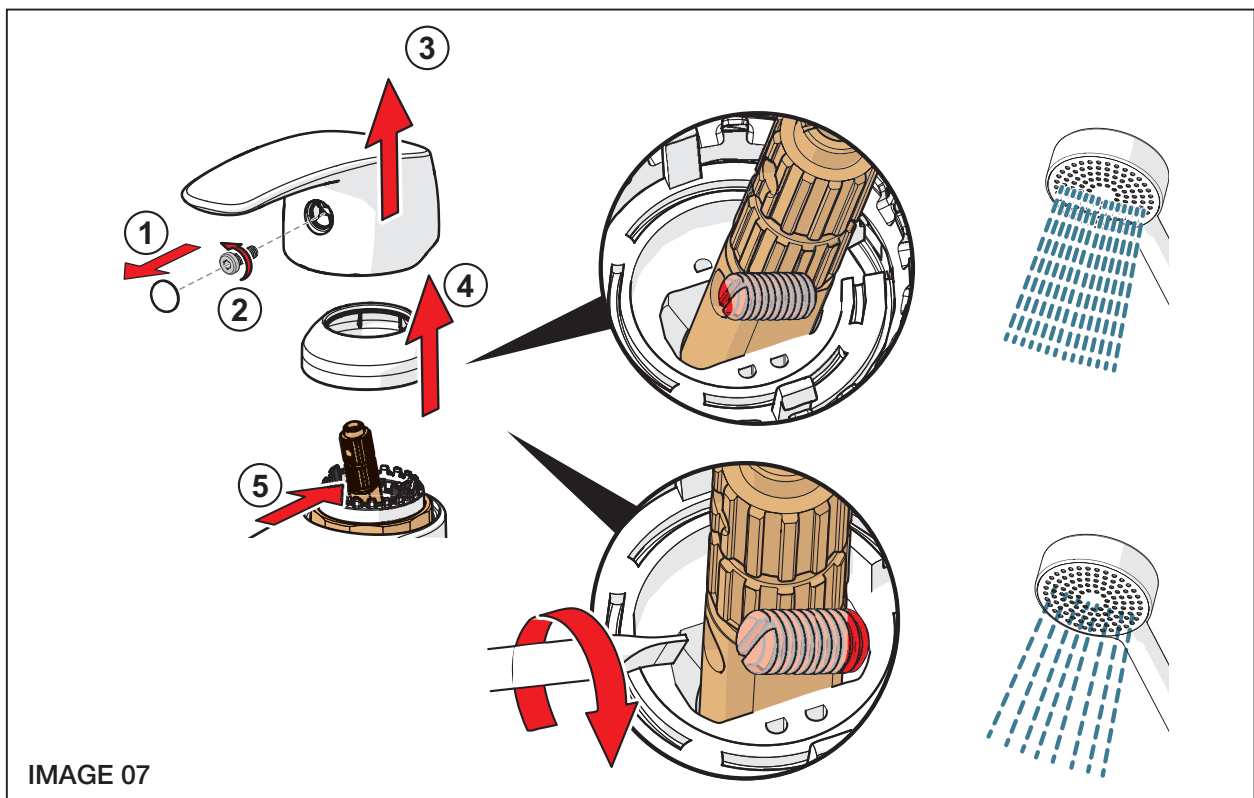


IMAGE 07

temperature limiter adjustment

The temperature of the hot water can be limited by restricting the swing angle of the lever handle. This can be done without shutting off water supply to the tap.

Detach the lever handle and cover cap. (1 – 4) SEE IMAGE 08

Detach the black retaining ring on cartridge with a screwdriver or long-nose pliers (5).

Pull out the regulating shaft with its white limiters (6). Adjust the position of the white limiters to the required angle. Moving the front limiter to the left will reduce the limit on the maximum hot water temperature.

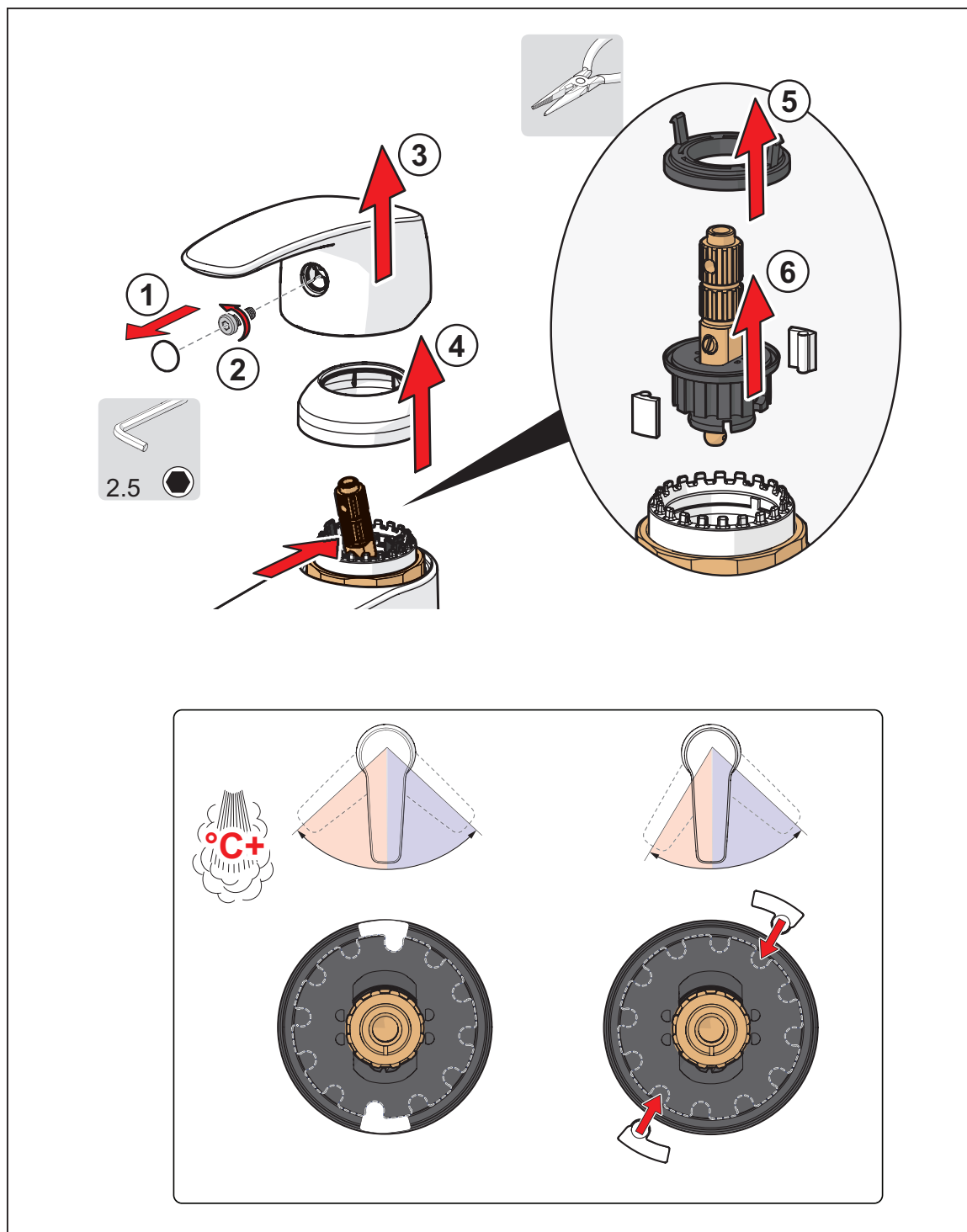


IMAGE 08

maintenance

CLEANING

Enware products should be cleaned with a soft damp cloth using only mild liquid detergent or soap and water. Do not use cleaning agents containing a corrosive acid, scouring agent or solvent chemicals. Do not use cream cleaners, as they are abrasive. Use of unsuitable cleaning agents may damage the surface. Any damage caused in this way will not be covered by warranty.

REPLACING CARTRIDGE

1. The cartridge is a non-serviceable part. A new cartridge must be used if the existing cartridge is damaged.
2. Turn water supply off and turn mixer handle on to drain water.
3. Remove the mixer handle by firstly prying off the handle plug from the front of the handle. Use a slotted screwdriver to unscrew the handle locking screw and remove screw. SEE IMAGE 10
4. Pull the handle off the spindle.
5. Using a small slotted screwdriver, carefully lever the cover cap from under its inside edge and remove it from tap body.
6. Use Oras Cartridge Socket or suitable 38mm socket wrench on the flats of the cartridge fixing nut to unscrew and remove the fixing nut.
7. Pull up vertically on the stem of the cartridge until the seal is released. Remove the cartridge from the mixer body.
8. Inspect and replace as per the trouble-shooting guide and spare parts list.

REASSEMBLING

1. Align the locating lug on the cartridge to the locating hole in the tap body, and press the cartridge into position.
2. Screw cartridge fixing nut into mixer body and tighten using the cartridge key or 38mm socket wrench.
3. Fit cover cap and handle components back on.

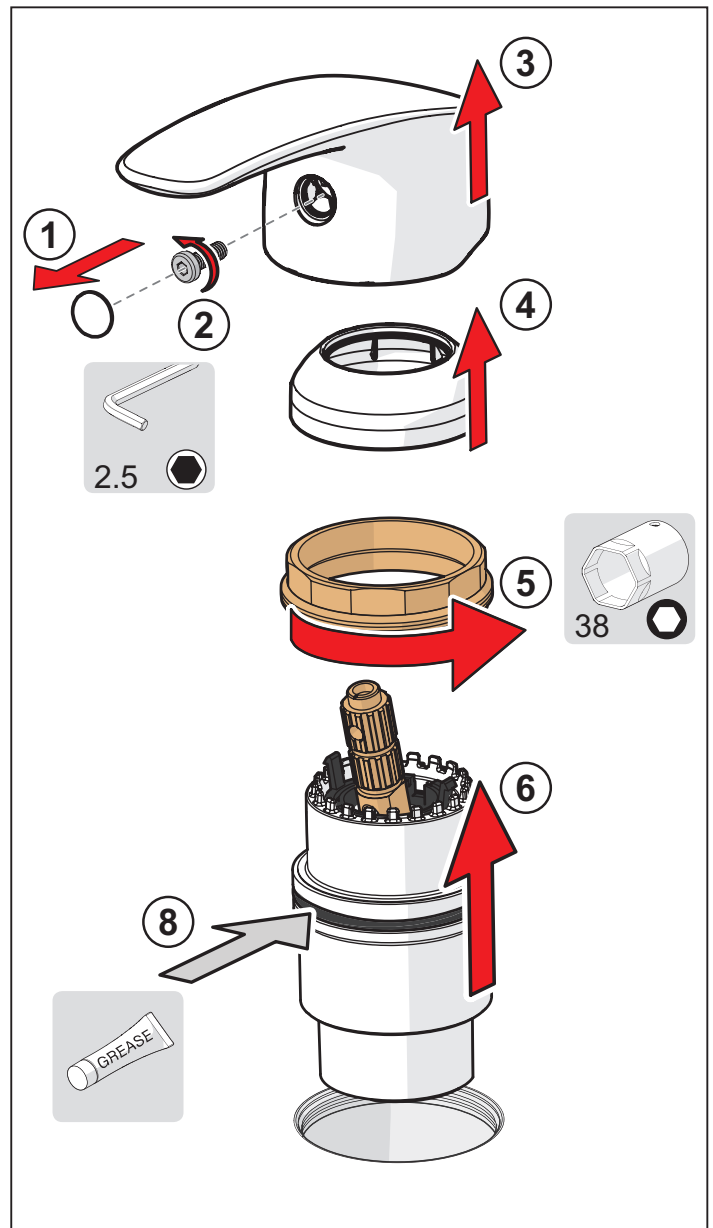
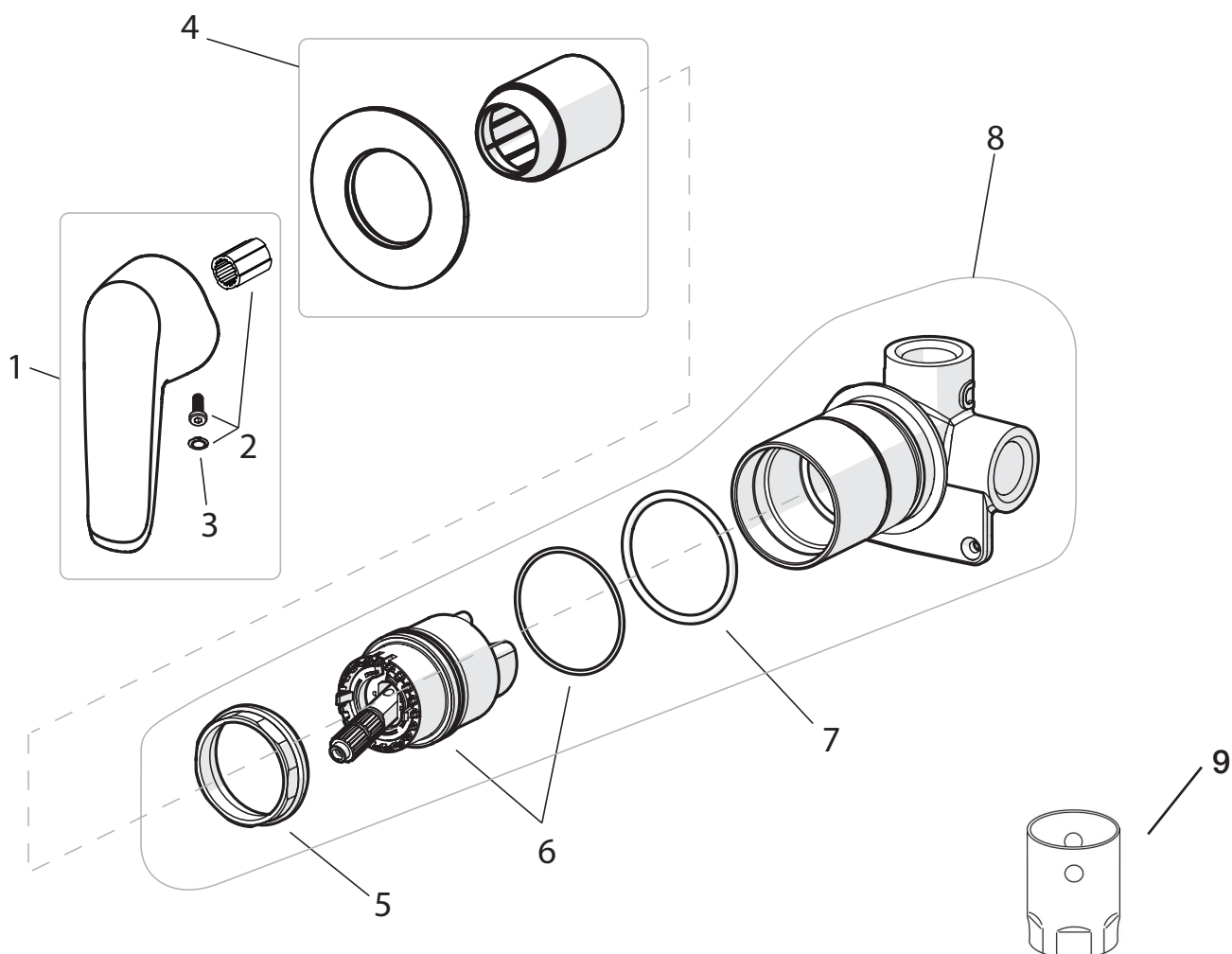


IMAGE 10

For specific problems such as a leaking tap refer to Troubleshooting on page 11 for instructions.

spare parts

	DESCRIPTION	PART CODE
1	Lever Handle - Safira (Red/Blue) with fixing screw and handle cap	SAF606HDL-RB
	Lever Handle - Safira (Yellow/Blue) with fixing screw and handle cap	SAF606HDL-YB
2	Safira Handle Fixing Kit for short handle	SLMS642
3	Handle Plug (each) for short handle	SLMS635
4	Cover Plate and Chrome Sleeve	SAF608CP
5	Cartridge Fixing Nut	SLMS606
6	Oras Cartridge with O-ring	SLMS690
7	Sleeve Sealing O-ring	
8	In-Wall Shower Assembly	891534
9	Oras Cartridge Key	SLMS622



troubleshooting

Refer to the following troubleshooting chart for specific problems and solutions.

PROBLEM	CAUSE	RECTIFICATION
Leaking from outlet.	Cartridge is damaged or split.	Check pressure and install a pressure reduction valve. Replace cartridge.
	Supply pressures too high.	Cartridge fixing nut has been over tightened. Replace cartridge.
	Incorrect installation.	Cartridge fixing nut has been over tightened. Replace cartridge.
	Cartridge has debris caught in the mechanism.	Remove cartridge and inspect. Remove debris and/or replace cartridge if damaged. Install an inline strainer.
	Cartridge fixing nut is loose.	Check cartridge bottom seal and tighten cartridge fixing nut.
Water is leaking from top of mixer body.	Mixer body O-rings are worn. Cartridge seals are worn.	Replace cartridge.
Water is not flowing from tap.	Water turned off.	Turn water on.
	Outlet / Flow control or check valve is blocked by debris.	Remove outlet / flow control and clean debris. Install an inline strainer. Clean check valve.
Hot water flows when handle is turned anti-clockwise.	Hot and cold connections are incorrect.	Reconnect hot and cold supply correctly to mixer.

Enware Australia (“we” or “us”) warrants that this product (also referred to as “our goods”) will be free from all defects in materials and workmanship for 15 years* from the date of purchase. Our liability under this warranty is limited at our option to the repair or replacement of the defective product or part, the cost of repair of the defective product or part or the supply of an equivalent product or part, in each case if we are satisfied the loss or damage was due to a defect in the materials or workmanship of the product or part. All products must be installed in accordance with the manufacturer’s instructions, the PCA, and AS/NZS3500 including any other applicable regulatory requirements.

making a claim

To make a claim under this warranty you must notify us in writing within 7 days of any alleged defect in the product coming to your attention and provide us with proof of your purchase of the product and completed the Online Product Service and Warranty Form available on website www.enware.com.au/product-service-enquiry.

All notifications and accompanying forms must be sent to us marked for the attention of the Enware Australia, 9 Endeavour Road, Caringbah NSW 2229. We can also be contacted by telephone (1300 369 273) or by email (info@enware.com.au).

Your costs in making a claim under this warranty, including all freight, collection and delivery costs, are to be borne and paid by you. We also reserve the right at our cost to inspect any alleged defect in the product wherever it is located or installed or on our premises.

Conditional warranty: Ceramic Cartridge Oras Single Lever Mixers - 2 years Oras parts and labour warranty from the date of purchase of the product. *After 2 years, a further 3 years Oras replacement part only warranty is applicable to the ceramic disc cartridge only; after 5 years an additional 10 years Enware replacement part warranty is applicable to the ceramic disc cartridge only. **This extended parts only warranty is applicable to Oras Ceramic Disc Single Lever Mixer products purchased within Australia*

exceptions

This warranty does not apply in respect of any damage or loss due to or arising from:

- a) Failure by you or any other person to follow any instructions for use (including instructions and directions relating to the handling, storage, installation, fitting, connection, adjustment or repair of the product) published or provided by us;
- b) Failure by you or any other person responsible for the fitting, installation or other work on the product to follow or conform to applicable laws, standards and codes (including the AS/NZ 3500 set of Standards, all applicable State and Territory Plumbing Codes, the Plumbing Code of Australia and directions and requirements of local and other statutory authorities); or
- c) Any act or circumstance beyond our control including faulty installation or connection, accident, abnormal use, acts of God, damage to buildings, other structures or infrastructure and loss or damage during product transit or transportation.

other conditions

Except as provided or referred to in this document, we accept no other or further liability for any damages or loss (including indirect, consequential or economic loss) and whether arising in contract, tort or otherwise. Any benefits available to you under this warranty are in addition to any non-excludable rights or remedies you may have under applicable legislation, including as a “consumer” under the Australian Consumer Law. To that extent you need to be aware that: Our goods come with guarantees that cannot be excluded under the Australian Consumer Law. You are entitled to a replacement or refund for a major failure and for compensation for any other reasonably foreseeable loss or damage. You are also entitled to have the goods repaired or replaced if the goods fail to be of acceptable quality and the failure does not amount to a major failure.

ADDRESS: 9 Endeavour Rd Caringbah NSW 2229 Australia

POSTAL ADDRESS: P.O. Box 2545, Taren Point NSW 2229 Australia

PHONE: +61 2 8556 4000

1300 369 273 (AUS) WWW.ENWARE.COM.AU INFO@ENWARE.COM.AU

