

Restore Mental Health Wall Mixer with Piezo Touch Time Flow - Back-of-Wall Assembly

Enware's Restore range of Mental Health Secure Ensuite basin and shower mixers help to normalise the bathroom environment while providing safe, secure and comforting experiences.

Supplied as Front-of-Wall and Back-of-Wall Assemblies.

KEY FEATURES

- Designed to promote good water health with sequential style mixing always closing through the cold position
- New Lead-Free Brass Mixer and stainless steel solenoid is easy to install in its in-wall installation box with variable depth adjustment
- Front of wall surround can be permanently fixed and sealed to wall. Access for maintenance is made through secure removeable fascia, avoiding wall damage or breaching of wall seal
- Normalized shower mixer design to assist rehabilitation with easy to clean bright chrome finish
- Patient safety at the heart of the design with anti-ligature handle and piezo touch button tested to TS001:2013 (Grade A4)
- Robust design for challenging environments with IK10 impact tested front of wall construction
- Low profile ergonomic handle for easy temperature adjustment and water control
- Piezo touch time flow default to 4 min run time with 30 second lockout. Can be provided with different timing on request.
- Requires 240VAC GPO for connection of power transformer
- Supplied as Front of Wall (FOW) and Back of Wall (BOW) assemblies for easy installation



PRODUCT CODE

RHMIXSQ-BOW-PT	Restore Mental Health Wall Mixer with Piezo Touch Time Flow - Back-of-Wall Assembly
----------------	---

Products are to be installed in accordance with the Plumbing Code of Australia and AS/NZS3500.

Reference should also be made to the Australasian Health Facility Guidelines (AHFG), ABCB and Local Government regulations when considering the choice of, and the installation of these products.

Due to ongoing Research and Development, specifications may change without notice.

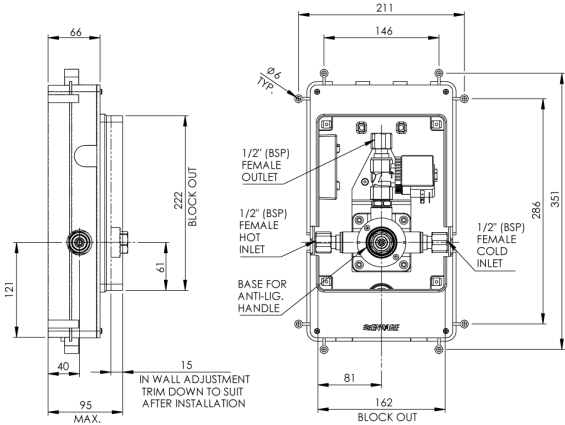
Component specifications may change on some export models.

Refer to warranty statement for warranty details - www.enware.com.au/warranty.

Restore Mental Health Wall Mixer with Piezo Touch Time Flow - Back-of-Wall Assembly

TECHNICAL DATA

Maximum Working Temperature	70°C
Minimum Recommended Pressure	50kPa
Maximum Recommended Pressure	500kPa
Maximum Static Pressure	1000kPa
Inlet Connection	1/2"BSP FI
Outlet Connection	1/2"BSP FI
Operating Voltage	24VDC
Maximum Current	1.25A
Power Supply	240VAC
Technical Notes	Requires Front-of-Wall component RHMIXSQ-FOW-PT
	Must be installed to ensure correct depth in relation to finished wall.



REQUIRED OPTIONS

RHMIXSQ-FOW-PT	Restore Mental Health Wall Mixer with Piezo Touch Time Flow - Front-of-Wall Assembly
----------------	--