

Restore Mental Health In-Wall Sequential Mixer with Short Outlet - Front-of-Wall Assembly

Enware's Restore range of Mental Health Secure Ensuite basin mixers help to normalise the bathroom environment while providing safe, secure and comforting experiences.

Sold as Front-of-Wall and Back-of-Wall Assemblies.

KEY FEATURES

- Normalized basin mixer design to assist rehabilitation with easy to clean bright chrome finish
- Patient safety at the heart of the design with anti-ligature handle and short basin outlet tested to TS001:2013 (Grade A4)
- Also available with 150mm long basin outlet - Vandal Resistant (not ligature resistant)
- Robust design for challenging environments with IK10 impact tested front-of-wall construction
- Low profile ergonomic handle for easy temperature adjustment and water control
- Designed to promote good water health with sequential style mixing always closing through the cold position
- New Lead-Free Brass Mixer is easy to install in its in-wall installation box with variable depth adjustment
- Front of wall surround can be permanently fixed and sealed to wall. Access for maintenance is made through secure removeable fascia, avoiding wall damage or breaching of wall seal
- Basin outlet designed to project water into basin and maintain a clean dripline
- Supplied as Front of Wall (FOW) and Back of Wall (BOW) assemblies for easy installation



PRODUCT CODE

RHMIXBASSQ-FOW	Restore Mental Health In-Wall Sequential Mixer with Short Outlet - Front-of-Wall Assembly
----------------	---

Products are to be installed in accordance with the Plumbing Code of Australia and AS/NZS3500.

Reference should also be made to the Australasian Health Facility Guidelines (AHFG), ABCB and Local Government regulations when considering the choice of, and the installation of these products.

Due to ongoing Research and Development, specifications may change without notice.

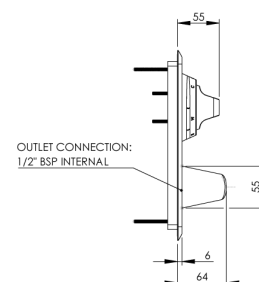
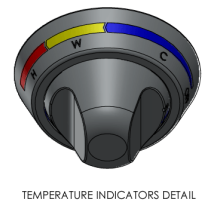
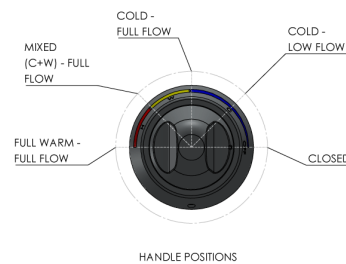
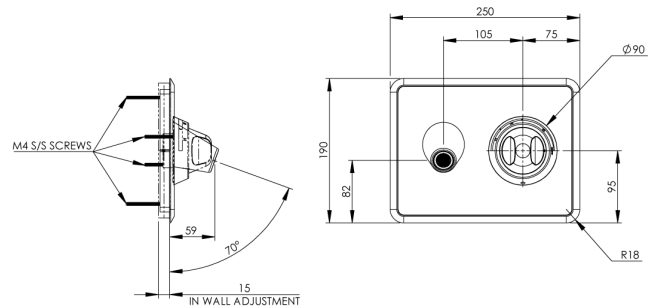
Component specifications may change on some export models.

Refer to warranty statement for warranty details - www.enware.com.au/warranty.

Restore Mental Health In-Wall Sequential Mixer with Short Outlet - Front-of-Wall Assembly

TECHNICAL DATA

WELS Category	Tapware
Standard WELS	5Stars
Standard WELS Flow Rate	5L/min
WELS Notes	WELS rating applies to spout only
Finish	Chrome
Facia Plate Material Grade	Stainless Steel
Minimum Working Temperature	5°C
Maximum Working Temperature	50°C
Maximum Inlet Temperature	70°C
Minimum Recommended Pressure	50kPa
Maximum Recommended Pressure	500kPa
Technical Notes	Requires Back-of-Wall component RHMIXBASSQ-BOW



REQUIRED OPTIONS

RHMIXBASSQ-BOW	Restore Mental Health In-Wall Sequential Mixer with Outlet - Back-of-Wall Assembly
----------------	--

Restore Mental Health In-Wall Sequential Mixer with Short Outlet - Front-of-Wall Assembly

SPARE PARTS

RHBSN60-FF	Restore Mental Health Wall Basin Outlet 60mm - Anti-Ligature
------------	---