

Restore Mental Health In-Wall Sequential Mixer with Outlet - Back-of-Wall Assembly

Enware's Restore range of Mental Health Secure Ensuite basin mixers help to normalise the bathroom environment while providing safe, secure and comforting experiences.

Sold as Front-of-Wall and Back-of-Wall Assemblies.

KEY FEATURES

- New Lead-Free Brass Mixer is easy to install in its in-wall installation box with variable depth adjustment
- Designed to promote good water health with sequential style mixing always closing through the cold position
- Normalized basin mixer design to assist rehabilitation with easy to clean bright chrome finish
- Patient safety at the heart of the design with anti-ligature handle and short basin outlet tested to TS001:2013 (Grade A4)
- Basin outlet designed to project water into basin and maintain a clean dripline
- Robust design for challenging environments with IK10 impact tested front of wall construction
- Front of wall surround can be permanently fixed and sealed to wall. Access for maintenance is made through secure removeable fascia, avoiding wall damage or breaching of wall seal
- Low profile ergonomic handle for easy temperature adjustment and water control
- Supplied as Front of Wall (FOW) and Back of Wall (BOW) assemblies for easy installation



PRODUCT CODE

RHMIXBASSQ-BOW	Restore Mental Health In-Wall Sequential Mixer with Outlet - Back-of-Wall Assembly
----------------	--

Products are to be installed in accordance with the Plumbing Code of Australia and AS/NZS3500.

Reference should also be made to the Australasian Health Facility Guidelines (AHFG), ABCB and Local Government regulations when considering the choice of, and the installation of these products.

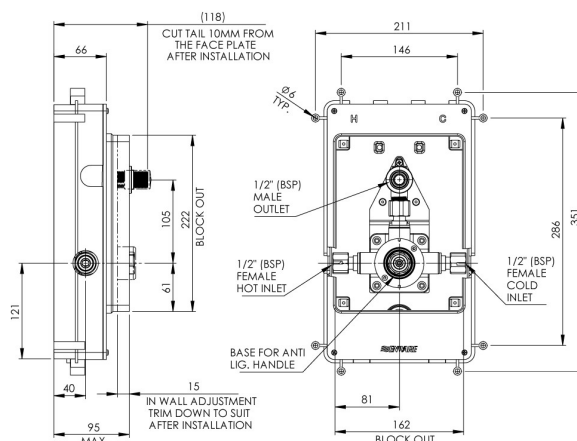
Due to ongoing Research and Development, specifications may change without notice.

Component specifications may change on some export models.

Refer to warranty statement for warranty details - www.enware.com.au/warranty.

TECHNICAL DATA

Valve Type	Ceramic Disc
Maximum Working Temperature	70°C
Minimum Recommended Pressure	50kPa
Maximum Recommended Pressure	500kPa
Maximum Static Pressure	1000kPa
Inlet Connection	1/2"BSP FI
Outlet Connection	1/2"BSP FI
Technical Notes	Requires Front-of-Wall component RHMIXBASSQ-FOW
	Must be installed to ensure correct depth in relation to finished wall.



Restore Mental Health In-Wall Sequential Mixer with Outlet - Back-of-Wall Assembly

REQUIRED OPTIONS

RHMIXBASSQ-150-FOW	Restore Mental Health In-Wall Sequential Mixer with 150mm Outlet - Front-of-Wall Assembly
RHMIXBASSQ-FOW	Restore Mental Health In-Wall Sequential Mixer with Short Outlet - Front-of-Wall Assembly