

Sequential Lever Surgeon Mixer

Installation & Maintenance Instructions

LEV150420SQ



LEV80420SQ



SEQUENTIAL LEVER MIXER

Installation & Maintenance Instructions



technical data

Working Pressure Range	50-800 kPa
Recommended Maximum Pressure	500 kPa*
Working Temperature Range	5 °C – 85 °C *

For use with potable water only.

compliance

*Enware products are to be installed in accordance with the Plumbing Code of Australia and AS/NZS3500.

Reference should also be made to the Australasian Health Facility Guidelines (AHFG), ABCB and Local Government regulations when considering the choice of, and the installation of these products.

Thermostatic Mixing Valves and Pressure Reduction Valves may be required to comply with maximum temperature and pressure requirements.

before installation

Before proceeding with installation

- Ensure all operating & dimensional specifications are suitable for the intended installation.
- Ensure all supply lines are flushed thoroughly to remove debris prior to the installation of this product as per AS/NZS 3500.1. Strainers (40 mesh) are recommended if debris is an ongoing problem.

please note

Enware Australia advises:

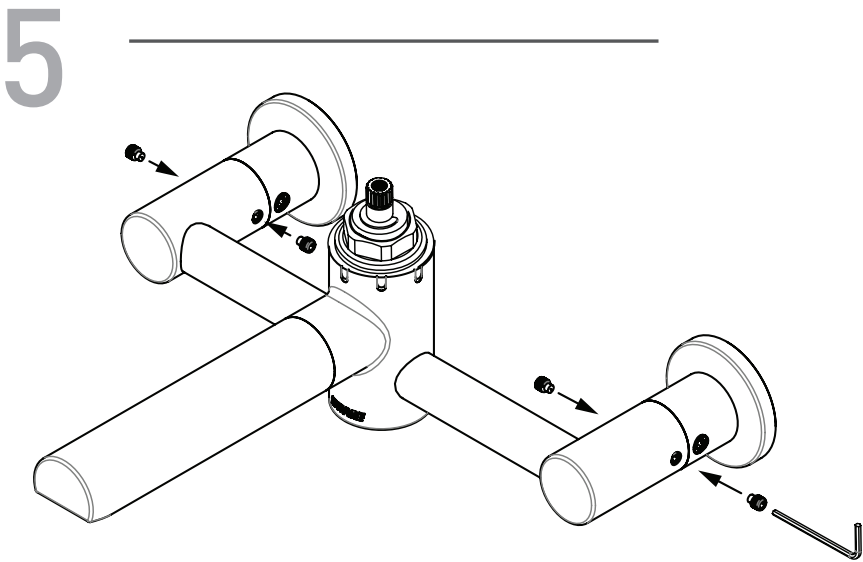
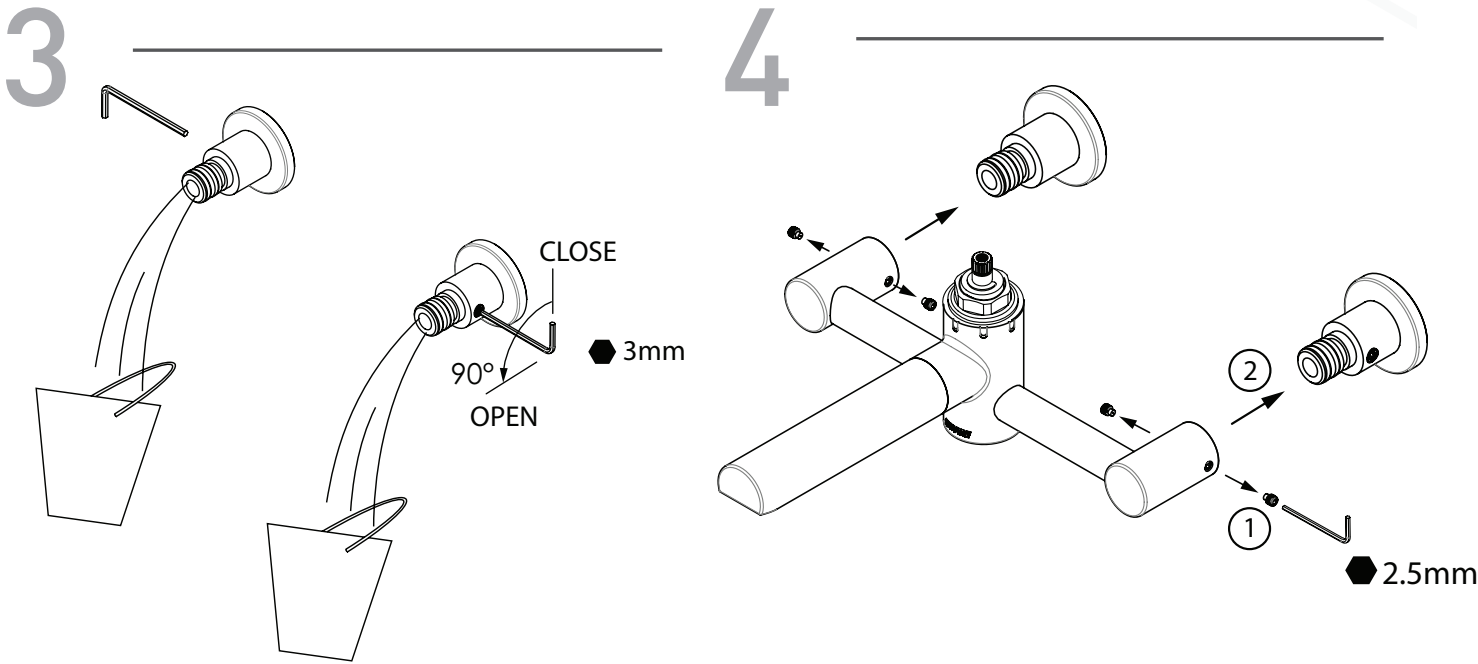
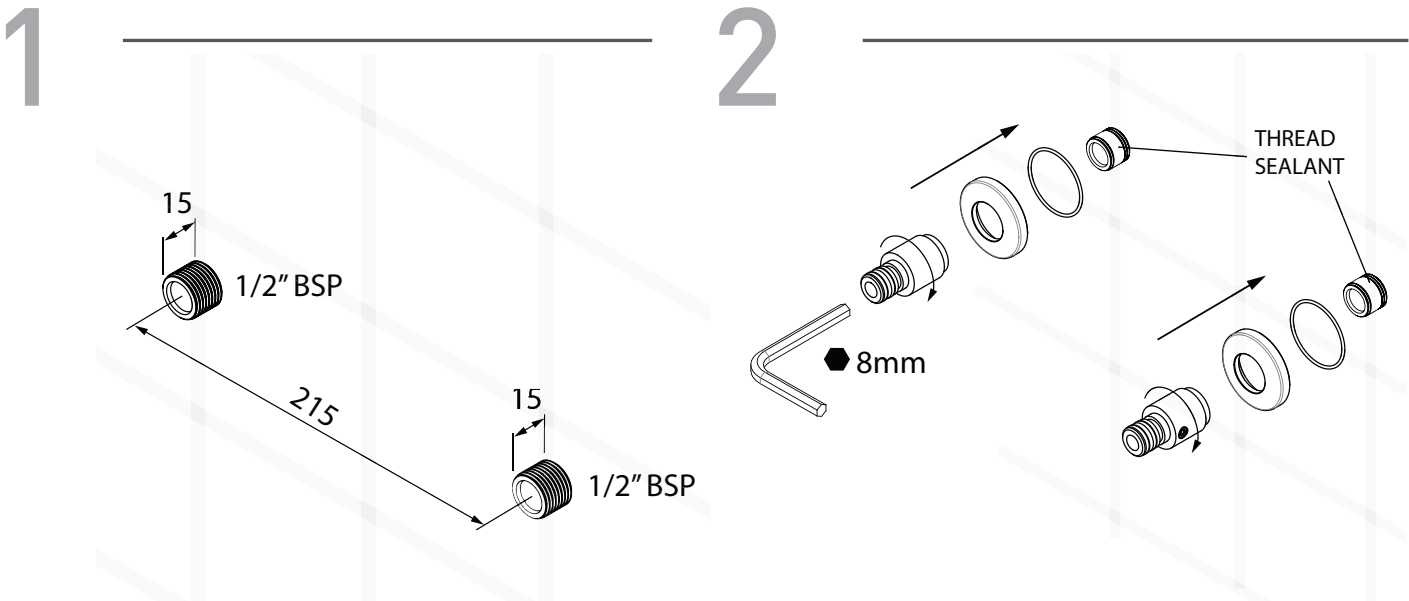
1. Due to ongoing Research and Development, specifications may change without notice;
2. Component specifications may change on some export models.



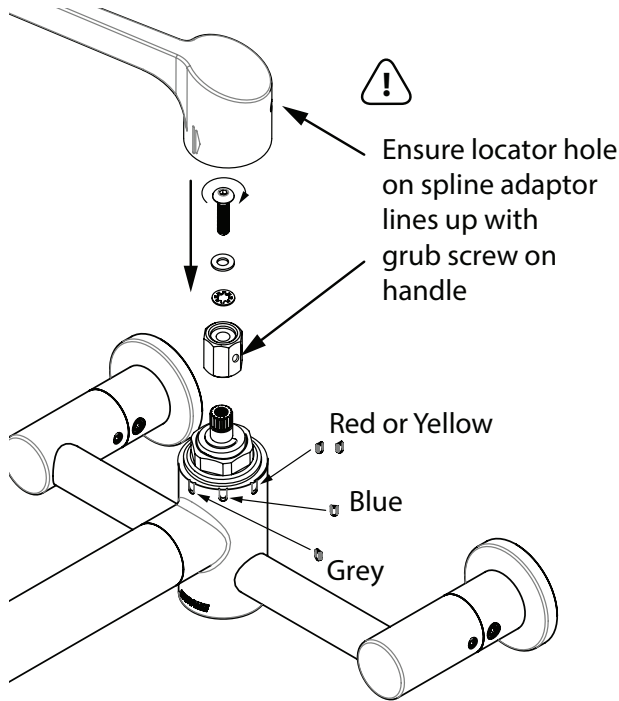
LEV150420SQ



INSTALLATION

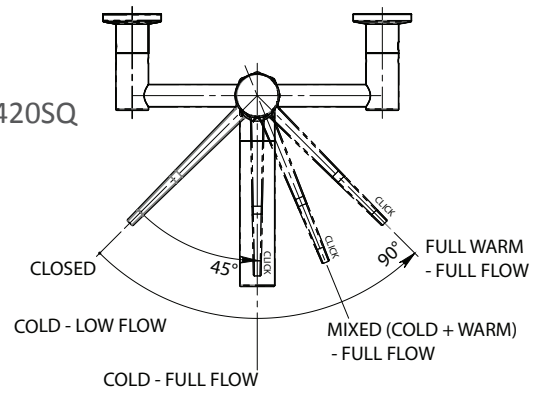


6

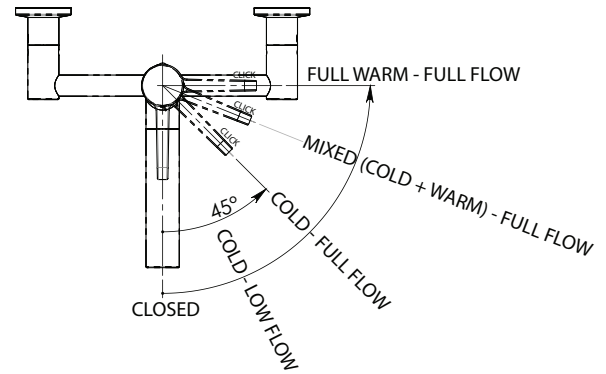


7

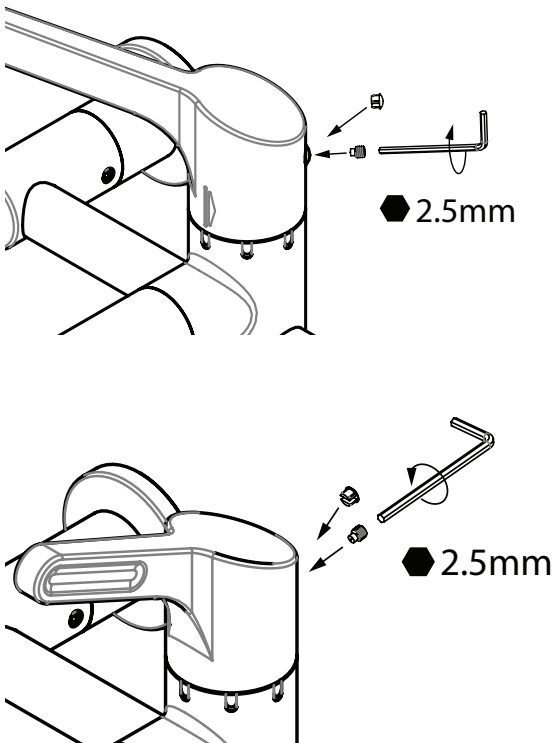
LEV150420SQ



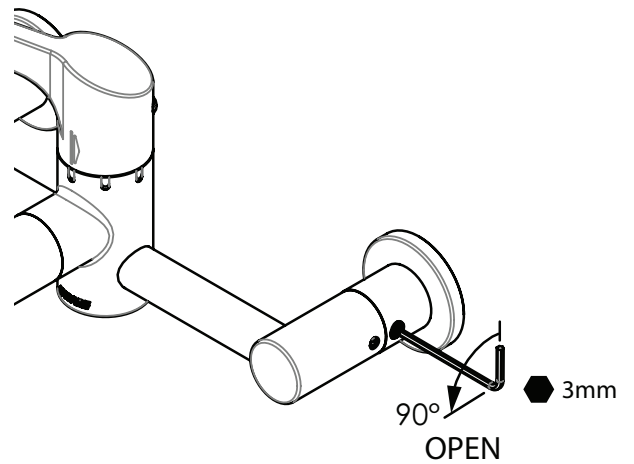
LEV80420SQ



8

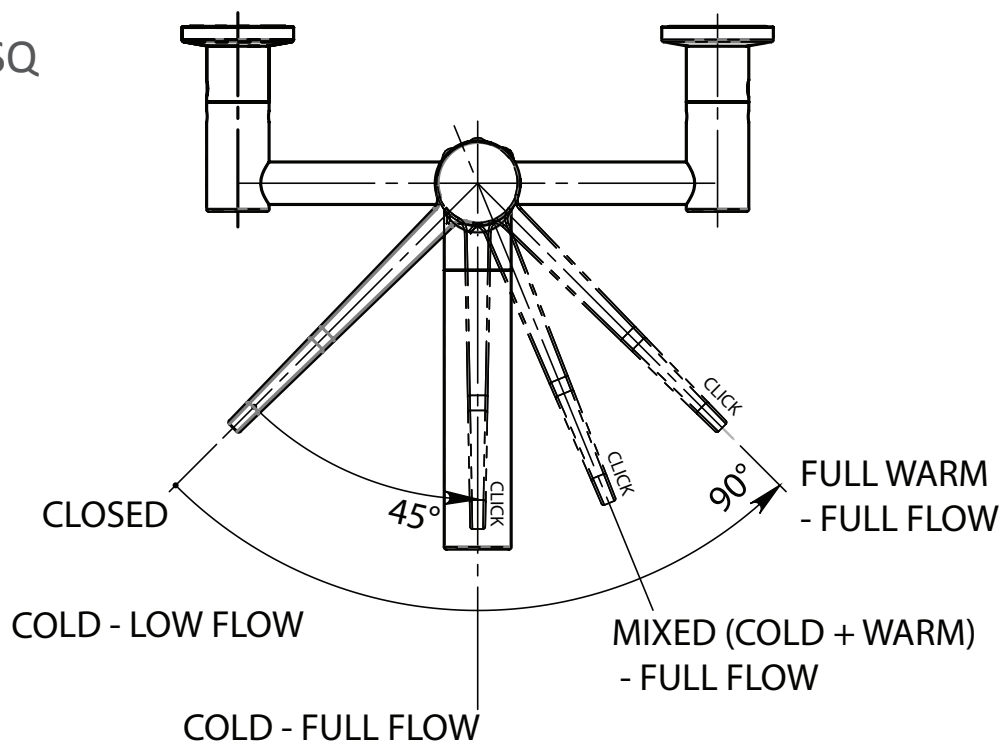


9

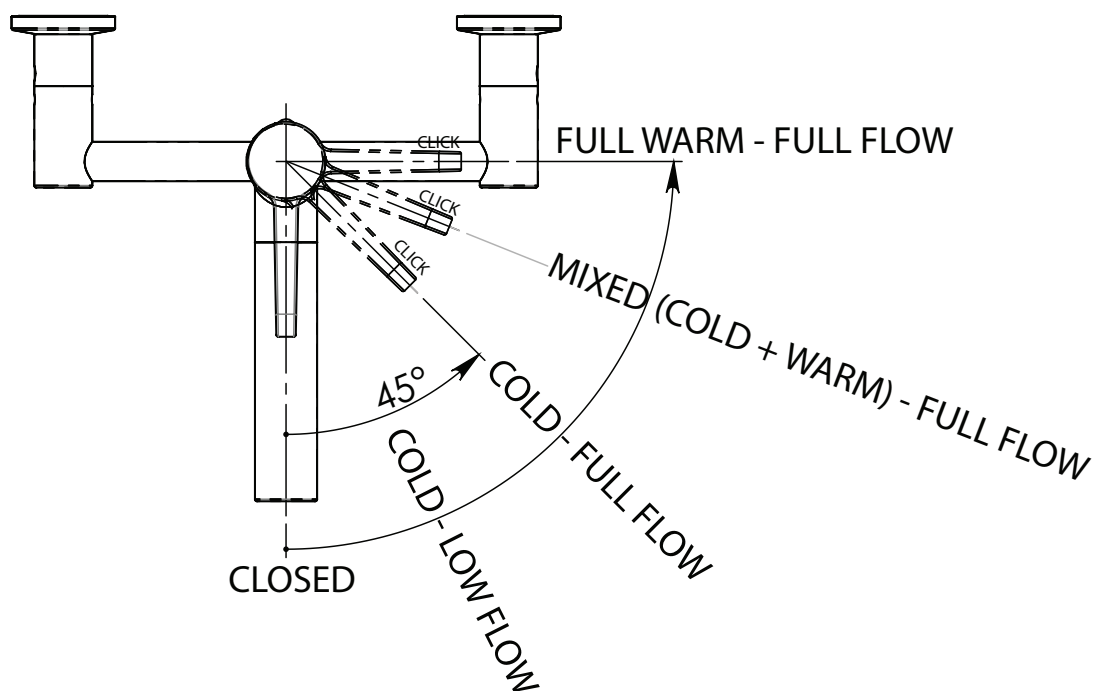


OPERATION

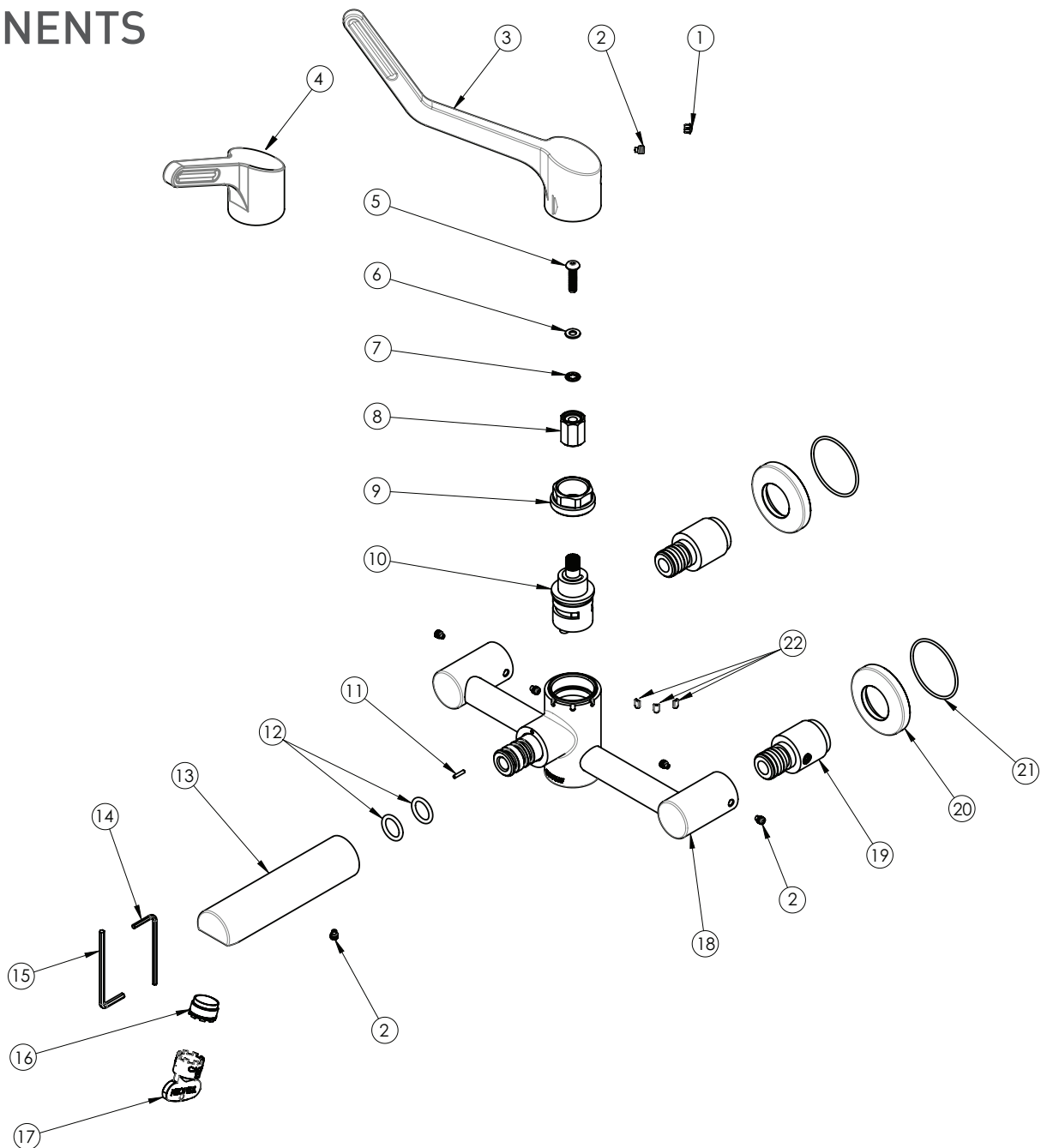
LEV150420SQ



LEV80420SQ



COMPONENTS



1	Grub Screw	12	O-ring BS113
2	Handle Plug - Chrome	13	Lever Sequential Mixer Spout 115mm
3	Lever Sequential 150mm Handle	14	Allen Key 2.5mm
4	Lever Sequential 80mm Handle	15	Allen Key 3mm
5	Screw M5 x 20 S/S	16	Laminar Flow Insert 5.7LPM TJ Cache / Aerator
6	Washer – Nylon 5 x 10	17	Cache Insert Key TJ Green
7	Tooth Washer M5 - S/S	18	Lever Sequential Surgeon Mixer Frame
8	Spline Adaptor	19	Isolation Inlet
9	Locknut for Cartridge	20	Wall Dress Ring
10	Cartridge 90 Degrees RTC	21	O-ring BS030
11	Locating Pin 2 x 10	22	Colour Indicator - Grey, Blue, Yellow, Red

TROUBLESHOOTING

PROBLEM	CAUSE	RECTIFICATION
Water leaking from outlet Water dripping and does not shut off	Debris caught in seal of cartridge	Remove cartridge and inspect. Remove debris and/or replace cartridge if damaged
	Ceramic discs are worn or damaged	Replace cartridge
Water is leaking from spindle	O-ring on Cartridge is worn or damaged	Replace Cartridge
Water is not flowing from tap Poor water flow from outlet	Water turned off.	Turn water on.
	Aerator is blocked by debris.	Remove tap and wash debris from aerator. Install an inline strainer.
Handle is wobbly Handle feels loose	Spline adaptor is missing or loose	Ensure spline adaptor is installed correctly

SERVICE & MAINTENANCE

spout & tap handles

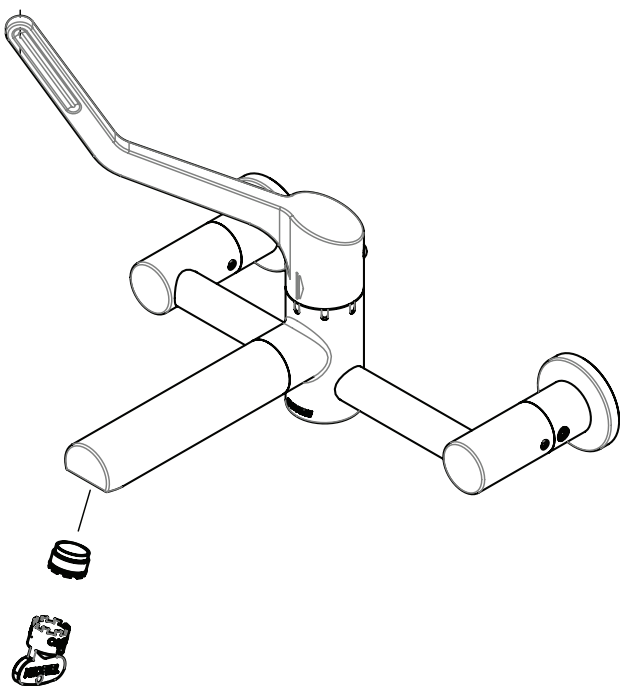
Occasionally the handle screws should be checked for tightness and a visual inspection made of all other connections on the tap assembly. Ensure that the spout and the tap handles are secure, and tighten if necessary.

aerator

Spout aerator should be checked periodically for debris. Use Aerator Key to unscrew spout aerator. If aerator doesn't come out completely, turn tap on to flush the aerator out.

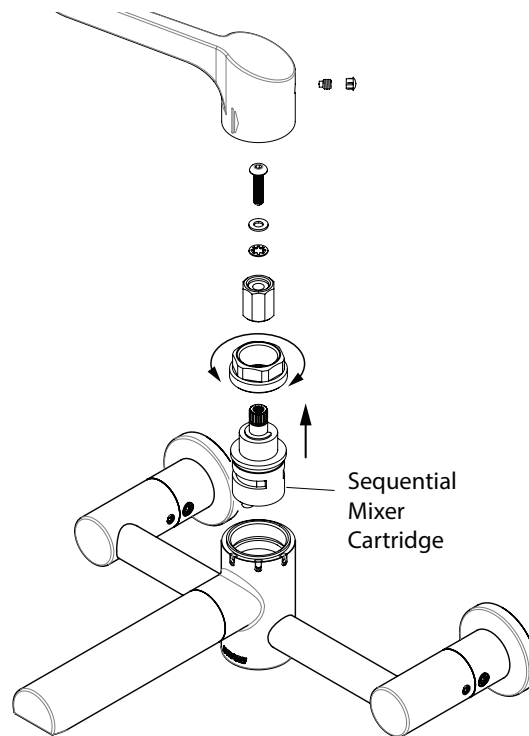
Inspect and reverse rinse aerator to clear any debris. Replace aerator if necessary.

To fit aerator back, insert aerator into tip of spout using care to avoid damage to the aerator O-ring by ensuring the aerator is square to the spout outlet, and finger tighten half a turn. Use Aerator Key to tighten aerator into position. Do not overtighten.



sequential mixer cartridge

To replace mixer cartridge, unscrew cartridge retaining nut. Pull cartridge out and replace with new component. Fit cartridge retaining nut back on and tighten, but do not overtighten. (Recommended - 20Nm)

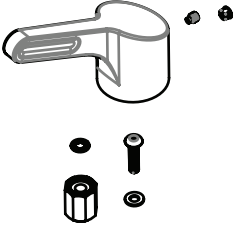
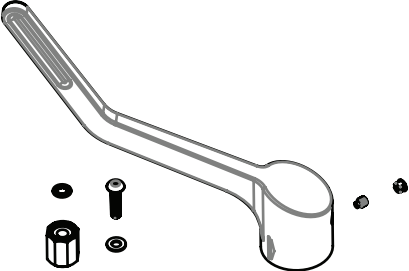







cleaning

Enware Product should be cleaned with a soft damp cloth using only mild liquid detergent or soap and water.

Do not use cleaning agents containing a corrosive acid, scouring agent or solvent chemicals. Do not use cream cleaners, as they are abrasive. Epoxy coated surfaces should only be cleaned with a cloth and clear water or mild detergent. Use of unsuitable cleaning agents may damage the surface. Any damage caused in this way will not be covered by warranty.

SPARE PARTS

PART		ENWARE PRODUCT CODE
Handle Assembly 80mm Complete		LEV80378SQ
Handle Assembly 150mm Complete		LEV150378SQ
Colour Indicator Pack for Sequential Body (Yellow / Blue / Grey / Red)		LEVSQIND-BODY
Sequential Cartridge Kit 90° RTC		LEVSQSBA-90
Spline Adaptor		LEVSQHEX
Laminar Insert and Key		LEVSQLAM5
Grub Screw M5 Dog Point (Pack of 6)		GSCREWDPM5

Enware Australia (“we” or “us”) warrants that this product (also referred to as “our goods”) will be free from all defects in materials and workmanship for 12 months* from the date of purchase. Our liability under this warranty is limited at our option to the repair or replacement of the defective product or part, the cost of repair of the defective product or part or the supply of an equivalent product or part, in each case if we are satisfied the loss or damage was due to a defect in the materials or workmanship of the product or part. All products must be installed in accordance with the manufacturer’s instructions, the PCA, and AS/NZS3500 including any other applicable regulatory requirements.

making a claim

To make a claim under this warranty you must notify us in writing within 7 days of any alleged defect in the product coming to your attention and provide us with proof of your purchase of the product together with a completed Product ServiceRequest form (ENF091), which is available on request from our office or website (see contact details below). All notifications and accompanying forms must be sent to us marked for the attention of the Enware Australia, 9 Endeavour Road, Caringbah NSW 2229. We can also be contacted by telephone (1300 369 273) or by email (info@enware.com.au). Your costs in making a claim under this warranty, including all freight, collection and delivery costs, are to be borne and paid by you. We also reserve the right at our cost to inspect any alleged defect in the product wherever it is located or installed or on our premises.

* 1 Year parts and labour on the complete assembly. After 1 year, a further 4 years parts only warranty is applicable to sequential valve cartridge.

exceptions

This warranty does not apply in respect of any damage or loss due to or arising from:

- a) Failure by you or any other person to follow any instructions for use (including instructions and directions relating to the handling, storage, installation, fitting, connection, adjustment or repair of the product) published or provided by us;
- b) Failure by you or any other person responsible for the fitting, installation or other work on the product to follow or conform to applicable laws, standards and codes (including the AS/NZ 3500 set of Standards, all applicable State and Territory Plumbing Codes, the Plumbing Code of Australia and directions and requirements of local and other statutory authorities); or
- c) Any act or circumstance beyond our control including faulty installation or connection, accident, abnormal use, acts of God, damage to buildings, other structures or infrastructure and loss or damage during product transit or transportation.

other conditions

Except as provided or referred to in this document, we accept no other or further liability for any damages or loss (including indirect, consequential or economic loss) and whether arising in contract, tort or otherwise. Any benefits available to you under this warranty are in addition to any non-excludable rights or remedies you may have under applicable legislation, including as a “consumer” under the Australian Consumer Law. To that extent you need to be aware that: Our goods come with guarantees that cannot be excluded under the Australian Consumer Law. You are entitled to a replacement or refund for a major failure and for compensation for any other reasonably foreseeable loss or damage. You are also entitled to have the goods repaired or replaced if the goods fail to be of acceptable quality and the failure does not amount to a major failure.



ADDRESS: 9 Endeavour Road, Caringbah NSW 2229 Australia

POSTAL ADDRESS: P.O. Box 2545, Taren Point NSW 2229 Australia

PHONE: ☎ 2 8536 4000

1300 369 273 (AUS) WWW.ENWARE.COM.AU INFO@ENWARE.COM.AU

