

Slimline Bench Mounted Laboratory Tap with Swivel Gooseneck Spout - Ceramic Disc - Water Only

Installation and Maintenance Instructions

LCN103

LCN110



technical data

Working Pressure Range	Min 20 kPa Max 700 kPa
Maximum Static Pressure	1000 kPa
Maximum Working Temperature	90°C
Inlet Connection	1/2" BSP Male
Outlet Connection	Tube Nozzle/ 3/8" BSP Female (without nozzle)
Water Options	Cold, Hot

Enware products are to be installed in accordance with the Plumbing Code of Australia (PCA) and AS/NZS3500. Installations not complying with PCA and AS/NZS 3500 may void the product and performance warranty provisions.

Reference should also be made to the Australasian Health Facility Guidelines (AHFG), ABCB and Local Government regulations when considering the choice of, and the installation of these products.

This product must be installed and commissioned by a qualified plumber.

For use with potable water only.

NOTE: Enware Australia advises:

1. Due to ongoing Research and Development, specifications may change without notice.
2. Component specifications may change on some export models.

All measurements are in millimetres.

I00551_17 Apr 2024

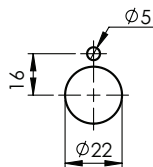
installation

- All supply lines must be flushed thoroughly to remove debris prior to the installation of this product, as per AS/NZS 3500.1. Strainers (40 mesh) are recommended if debris is an ongoing problem.
- A pressure reduction valve may be required to comply with the recommended maximum supply pressure and/or balanced pressure requirements.
- It is recommended that isolation valves are installed on both hot and cold supplies prior to the tap and that these are easily accessible.

INSTALLATION PROCEDURE

1. Prepare 1 tap hole on bench.
Drill hole size: 22mm, with anti-rotation pin 5mm hole at 16mm from centre. **SEE IMAGE 01**

Check the position of anti-rotation pin as the orientation may vary.
2. Before drilling the holes, check the maximum thickness of the bench is suitable for the tap.
Note: Maximum bench thickness 45mm.
3. Fit O-ring on base flange and fit onto the tap frame.
SEE IMAGE 02
4. Fit tap frame through the tap holes.
Screw backnut from underneath the bench and tighten with a spanner.
SEE IMAGE 02
5. Connect water supply to the 1/2" BSP inlet thread connection.



Installation detail (Benchtop Cutout)
Please check locking pin position
before installation as orientation
may vary.

(Not to Scale)

IMAGE 01

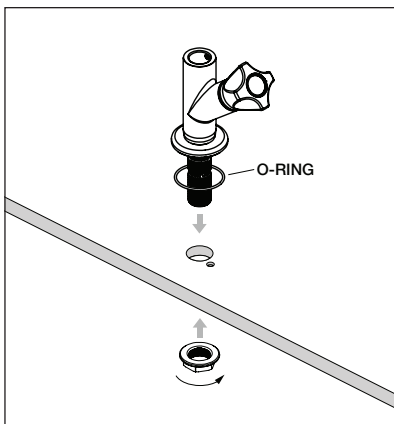


IMAGE 02

INSTALL SWIVEL SPOUT

1. Remove the grub screw from the side of tap frame, using a 2.5mm Allen key. **SEE IMAGE 03**
2. Fit spout onto body, ensuring the spout is fully inserted. Fit grub screw until it bottoms then back off slightly just enough for the spout to swivel. Do not disengage the grub screw more than half a turn.

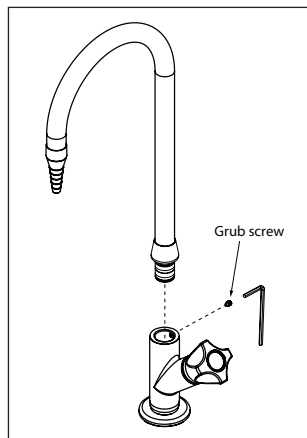


IMAGE 03

FITTING INDICATOR BUTTON ONTO HANDLE

Ensure the surface of handle is clean and dry, free of dust, moisture and grease.

Peel off the indicator button from its backing paper, taking care not to touch the adhesive side.

Place the indicator button onto flat section of the button mount, and push the button firmly onto handle. **SEE IMAGE 04**

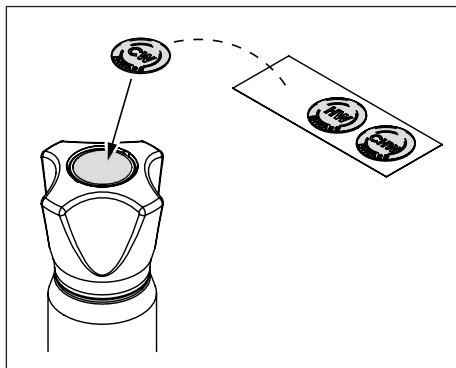


IMAGE 04

AERATOR (OPTIONAL)

Tube nozzle can be unscrewed from spout by hand, to reveal 3/8" BSP female connection.

Aerator (LCN172-5 sold separately) can be screwed on and tightened by hand.

SEE IMAGE 05

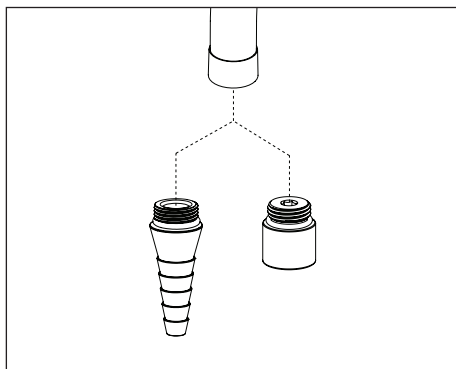


IMAGE 05

maintenance

CLEANING

Enware products should be cleaned with a soft damp cloth using only mild liquid detergent or soap and water. Do not use cleaning agents containing a corrosive acid, scouring agent or solvent chemicals. Do not use cream cleaners, as they are abrasive. Use of unsuitable cleaning agents may damage the surface. Any damage caused in this way will not be covered by warranty.

TUBE NOZZLE

In the event of blockage, tube nozzle on the spout should be checked and cleaned for debris. Unscrew tube nozzle, inspect and reverse rinse internal components under running water to clear any debris. Replace components if necessary.

SEE IMAGE 06

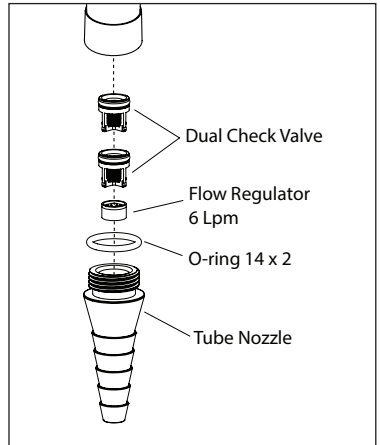


IMAGE 06

HANDLE & ACCESS TO SBA

To take off handle, use a hand tool to pop off the indicator button mount. Use a 3mm Allen key to remove fixing screw. Pull off handle to access the SBA. **SEE IMAGE 07**

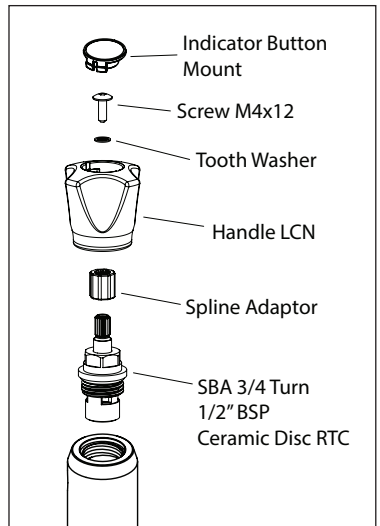
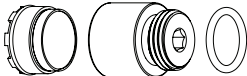

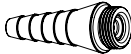

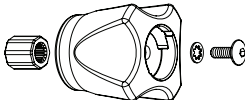


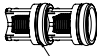




IMAGE 07

troubleshooting

PROBLEM	CAUSE	RECTIFICATION
Water leaking from outlet Water dripping and does not shut off	SBA has debris caught in the mechanism.	Remove SBA and inspect. Remove debris and clean. Install an inline strainer.
	Tap seat is damaged	Refurbish tap seat using a reseating tool. If necessary, fit reseating kit or replace tap body.
	SBA ceramic disc is worn or damaged	Replace SBA. Ensure the supply water temperatures and pressures are within the permitted range as specified in the Technical Data table on page 1.
Water is leaking from spindle	O-ring on SBA is worn or damaged	Replace O-ring. Replace SBA.
Water is not flowing from tap	Water turned off.	Turn water on.
Poor water flow from outlet	Aerator / Flow control is blocked by debris.	Remove flow control and clean debris. Install an inline strainer.

spare parts

	Description	Part Code
	Aerator LCN 3/8" BSP Laminar 5.7 Lpm TJ Cache	LCN172-5
	Outlet adaptor 3/8"M x 1/2"M	LCN175
	Tube nozzle with check valve (for water)	LCN171
	SBA 3/4 Turn LCN 1/2" BSP ceramic disc RTC	LCN183
	Handle LCN - Green	LCN191-GREEN
	Button mount - Green	LCN193-1
	Indicator button (adhesive) Cold Water	LCN182
	Spout O-rings (BS113x8) and grub screws (x4) kit	FS734
	2x Check valve to suit tube nozzle LCN	LCN187
	Flow control 6 Lpm for tube nozzle LCN	LCN190
	Base flange LCN	LCN186

product warranty statement - WATTS AUSTRALIA

EFFECTIVE FROM 20 November 2023

This Warranty Statement applies to products supplied by Australian Valve Group Pty Ltd (ACN 068 227 270) (**AVG**) or Enware Pty Ltd (ACN 662 302 767) (**Enware**) (each of AVG and Enware, a Supplier) and installed within Australia.

Subject to the terms and conditions outlined in this Warranty Statement, each Supplier warrants to its customers that a product supplied by it (**Product**) will be free from all defects in material and workmanship under normal usage for the applicable Warranty Period (as set out in the Warranty Table below). The Warranty Period commences from the date of delivery of the relevant Product.

1. Conditions

The warranty provided under this Warranty Statement will not apply in respect of a Product (or any Product defect, fault or resulting damage) if:

- the Product is not installed and maintained in accordance with the requirements of the applicable laws, standards and codes (including, without limitation to, the National Construction Code Volume Three – Plumbing Code of Australia, associated reference standards as applicable at the time and AS/NZS 3500);
- the Product is not installed and maintained by a qualified technician in accordance with the relevant installation and operation manual and instructions; and
- any Product defect, faulty or resulting damage arises from:
 - failure by you or any other person to follow the relevant manual or instructions (relating to the handling, storage, installation, fitting, connection, adjustment, maintenance or repair of the Product) published or provided by the Supplier;
 - failure by you or any other person responsible for the fitting, installation, or other work on the Product to follow or conform to applicable laws, standards and codes (including, without limitation to, the AS/NZ 3500 set of Standards, all applicable State and Territory Plumbing Codes, the Plumbing Code of Australia and directions and requirements of local and other statutory authorities);
 - any parts or components not manufactured by the Supplier (or otherwise not authorised by the Supplier) are installed or combined with the Product, without the prior authorisation of the Supplier; or
 - any act or circumstance beyond our control including, without limitation to, accident, abnormal use, vandalism, fouling caused by foreign material, damage from adverse water conditions, chemical, acts of God, damage to buildings, other structures and infrastructure and loss or damage during transit or transportation of the Product, or any abuse, misuse, misapplication, improper installation or connection, or improper maintenance or alteration of the Product.

2. Make a claim

To make a claim under this Warranty Statement, you must notify the relevant Supplier in writing within 7 days of any alleged defect in the Product coming to your attention and provide the Supplier with proof of your purchase of the Product to the relevant Supplier:

- If the Product is supplied by **AVG**, please contact AVG by telephone at 1800 284 287, or by email via its online portal <https://www.wattsau.com.au/support>.
- If the Product is supplied by **Enware**, please complete the Product Service Request form (ENF091), which is available on request from our office (see contact details below), or online via <https://www.enware.com.au/warranty-service-form/>. All notifications and accompanying forms must be sent to Enware marked for the attention of Enware, 9 Endeavour Road, Caringbah NSW 2229. Enware can also be contacted by telephone (1300 369 273) or by email (info@enware.com.au).

On receipt of a notification from you of a claim under this Warranty Statement, the relevant Supplier may contact you requesting you provide reasonably additional evidence, information or details about your claim, or requiring that the relevant Product should be returned to the Supplier (in accordance with the Supplier's instructions) for inspection and testing.

Your failure to comply with any such request within a reasonable amount of time may result in your claim under this Warranty Statement being rejected.

3. Our responsibilities

(a) In the event that the Supplier is reasonably satisfied that there is a defect in the relevant Product within the applicable Warranty Period, the Supplier will, at its option, replace the Product, supply an equivalent product or repair the Product, free of charge. Your costs in making a warranty claim under this Warranty Statement, including any costs in relation to freight, collection, delivery and installation, are to be borne and paid by you. However, if in respect of a Product, it is indicated in the Warranty Table that labour support will be provided, and the Supplier is reasonably satisfied that a defect in the Product takes place during the period that labour support will be provided as indicated in the Warranty Table, the Supplier will bear the costs for delivery, repair and installation of the replacement Product (as applicable).

(b) TO THE EXTENT PERMITTED BY LAW AND SUBJECT TO PARAGRAPH 4 BELOW AND THE OPERATION OF THE AUSTRALIAN CONSUMER LAW:

(i) THE WARRANTY SET OUT IN THIS WARRANTY STATEMENT IS GIVEN EXPRESSLY AND IS THE ONLY WARRANTY GIVEN BY THE SUPPLIER WITH RESPECT TO THE RELEVANT PRODUCT;

(ii) THE SUPPLIER MAKES NO OTHER WARRANTIES, EXPRESS OR IMPLIED;

(iii) THE SUPPLIER HEREBY SPECIFICALLY DISCLAIMS ALL OTHER WARRANTIES, EXPRESS OR IMPLIED, INCLUDING BUT NOT LIMITED TO, THE IMPLIED WARRANTIES OF MERCHANTABILITY AND FITNESS FOR A PARTICULAR PURPOSE; AND

(iv) THE REMEDY DESCRIBED IN THIS WARRANTY STATEMENT SHALL CONSTITUTE THE SOLE AND EXCLUSIVE REMEDY FOR BREACH OF WARRANTY, AND THE SUPPLIER SHALL NOT BE RESPONSIBLE FOR ANY INCIDENTAL, SPECIAL OR CONSEQUENTIAL DAMAGES, OR LOST PROFITS OR THE COST OF REPAIRING OR REPLACING OTHER PROPERTY WHICH IS DAMAGED IF THE PRODUCT DOES NOT WORK PROPERLY.

4. Australian Consumer Law

This paragraph 4 applies if you are a 'Consumer' (as defined in section 3 of the Australian Consumer Law (**ACL**)) and the Product or services supplied to you falls within the goods or services which, for the purposes of the ACL, are of a kind ordinarily acquired for personal, domestic or household use or consumption.

The Products and services provided by the Supplier come with guarantees that cannot be excluded under the ACL, and noting in this Warranty Statement should be interpreted as attempting to exclude, restrict or modify such guarantees or your rights under the ACL. For major failures with any services, you are entitled:

- to cancel your service contract with us; and
- to a refund for the unused portion, or to compensation for its reduced value.

You are also entitled to choose a refund or replacement for major failures with Products. If a failure with the Product or a service does not amount to a major failure, you are entitled to have the failure rectified in a reasonable time. If this is not done you are entitled to a refund for the Products and to cancel the contract for the service and obtain a refund of any unused portion. You are also entitled to be compensated for any other reasonably foreseeable loss or damage from a failure in the Products or service*.

5. Warranty table

*the applicable period commences on the date of delivery of the Product.

PRODUCT GROUP	PRODUCT SERIES CODES	WARRANTY PERIOD (YEARS)*	LABOUR SUPPORT (YEARS)*
Commercial Lab and Gas Turrets	LCN/LC/LF	5	3



1300 369 273
info@enware.com.au
enware.com.au