

Enware D-Shape 500 Basin

Timeless and minimalist European made high quality vitreous china washing basin. Ideally suited for large commercial applications with its soft curves and user-friendly design. Suitable for AS1428.1. Optional shroud available.

KEY FEATURES

- 500mm width, 410mm depth, 160mm height
- Fully rimmed to prevent water harboring and ensure better drainage
- European thin basin rim design for larger inner bowl area and splash prevention
- Fully glazed for better infection control
- Taphole and overflow options
- Satisfies AS1428.1 requirements (without shroud)
- Mounting bolts included for wall fixing
- Standard plug and waste included



Tap, pop-up plug & waste and shroud not included

PRODUCT CODES

KOL911500-100	No Taphole No Overflow
KOL911502-100	1 x Taphole No Overflow
KOL91150222	3 x Taphole 1 x Overflow
KOL91150222-100	3 x Taphole No Overflow
KOL911502	1 x Taphole 1 x Overflow



Due to ongoing Research and Development, specifications may change without notice.

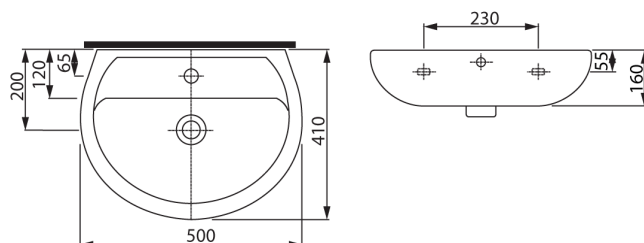
Component specifications may change on some export models.

Refer to warranty statement for warranty details - www.enware.com.au/warranty.

Products are to be installed in accordance with the Plumbing Code of Australia and AS/NZS3500.

Reference should also be made to the Australasian Health Facility Guidelines (AHFG), ABCB and Local Government regulations when considering the choice of, and the installation of these products.

TECHNICAL DATA



Enware D-Shape 500 Basin

OPTIONAL ACCESSORIES

KOL97101	Shroud for Enware D-Shape 500mm & 600mm Basins
KOL15600	Standard P-Trap - 40mm
IFO15917	Spare Parts: Microtrap 40mm - Pop Up
WB-BSNBT-CB	Bottle Trap Chrome 40mm

SPARE PARTS

IFO707	Spare Parts: Lag Bolts Pack Of 2 Bolts
IFO14934	Spare Parts: 40mm Plug & Waste 2-Piece