

# Type B Washbasin Kit - eSQX Touch-Free Point-of-Use Thermostatic Mixer - On Demand

After comprehensive, laboratory and field testing and feedback from user groups, Enware has produced a functional Type B Handwash Station Kit.

Providing a simple and compliant solution to the requirements of the Australasian Health Facility Guidelines and to meet hospital hand wash guidelines and aid in infection control whilst still being user friendly with easy maintenance. Ideal for hospitals, health care and research facilities. Kit is made up of Enware D Shape basin complete with shroud and eSQX infra-red touch-free point-of-use Thermostatic Mixer.

## KEY FEATURES

- Designed in accordance with the Australasian Health Guidelines for Type B wash basin stations
- Spout and waste positions staggered to optimise infection control
- eSQX touch-free point-of-use thermostatic mixer to minimise Legionella, infection & bacterial growth risks
- ATM621 In-Wall thermostatic mixer with 230mm spout, choose from On-Demand (ATWMC2L5) or Auto Sense (ATAMC2L5)
- Basin design is anti-water harbouring with no overflow for better infection control
- Fully rimmed basin for better water and splash retention
- Curved surfaces for better drainage
- Supplied with shroud for superior infection control
- Easy access to waste
- Low maintenance



## PRODUCT CODE

KITB08

Type B Washbasin Kit - eSQX Touch-Free Point-of-Use Thermostatic Mixer - On Demand

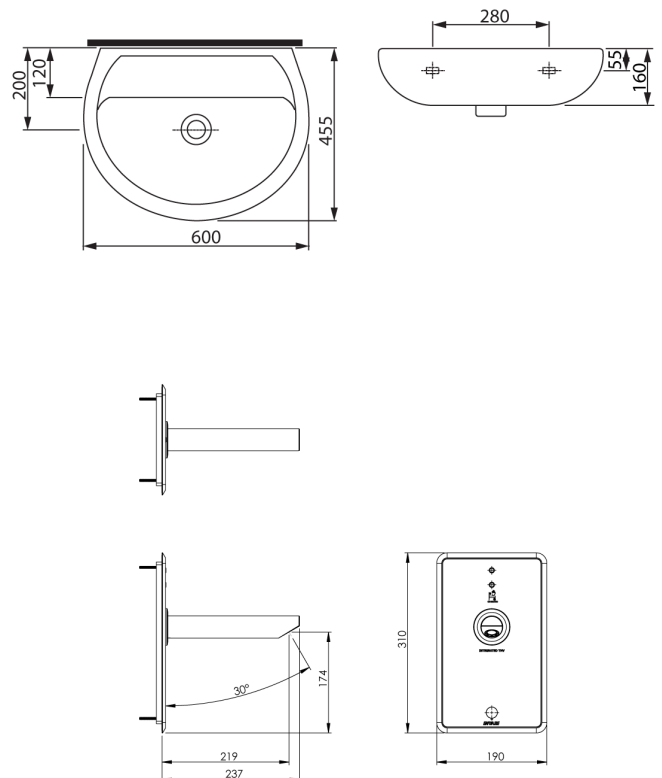
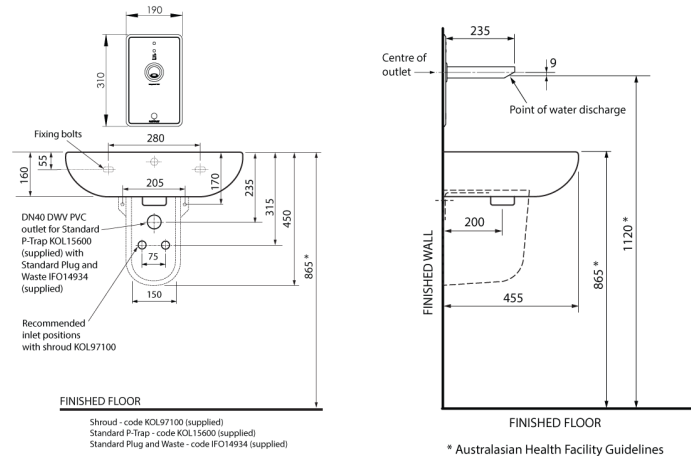


Due to ongoing Research and Development, specifications may change without notice. Component specifications may change on some export models. Refer to warranty statement for warranty details - [www.enware.com.au/warranty](http://www.enware.com.au/warranty).

Products are to be installed in accordance with the Plumbing Code of Australia and AS/NZS3500. Reference should also be made to the Australasian Health Facility Guidelines (AHFG), ABCB and Local Government regulations when considering the choice of, and the installation of these products.

# Type B Washbasin Kit - eSQX Touch-Free Point-of-Use Thermostatic Mixer - On Demand

## TECHNICAL DATA



# Type B Washbasin Kit - eSQX Touch-Free Point-of-Use Thermostatic Mixer - On Demand

## SPARE PARTS

ATM621-GROUP	Aquablend: eSQX - Touch-Free - On Demand Sensor - Point-of-Use Thermostatic Wall Mixer - Back of Wall - Mains
ATWMC2-GROUP	Aquablend: eSQX - Touch-Free - On Demand Sensor Point-of-Use Thermostatic Wall Mixer - Front of Wall Component - 12V Mains - 230mm Spout
ATMS600	Spare Parts: Aquablend SQX Cartridge Replacement
ATMS625	Spare Parts: Replacement Solenoid For ATM620/ATM621
ATMS693	Spare Parts: Strainer/ Check valve Assy SQX [Pair]
ATMS699	Spare Parts - Aquablend - ESQX Temperature Control Gear
ENMS231	Spare Parts: Transformer 12V 2.0M 2 Pin Plug
KOL911600-100	Enware D-Shape Basin 600mm No Tap Hole No Overflow
KOL97101	Shroud for Enware D-Shape 500mm & 600mm Basins
IFO14934	Spare Parts: 40mm Plug & Waste 2-Piece
KOL15600	Standard P-Trap - 40mm
IFO707	Spare Parts: Lag Bolts Pack Of 2 Bolts