

Enware Touch-Free Wall Sensor Tap On Demand Sensor Front of Wall Component - Mains - 230mm Spout

ENMWMC2

Touch-free sensor tap with an above outlet sensor is designed for clinical hand to elbow washing for surgical scrub, and Type A and Type B wash stations.

KEY FEATURES

- On Demand Sensor - place hand in front of sensor to turn on, valve stays open without hand remaining in the sensor range. Place hand in front of sensor again to turn off
- Low voltage 12V mains power supply
- 230mm spout
- Flush cycle stagnation management to reduce risk of bacterial growth, usage monitoring and other function settings are adjustable via Oras App and Bluetooth connectivity
- AHFG Type A and B healthcare basin compatibility
- Compatible with Smartflow Monitoring System for monitoring and reporting
- Smart, durable easy-clean chrome surfaces
- Smooth bore tubular spout designed to minimise bacteria growth
- IP67 rated connections
- Faceplate can be removed to access integral isolation/check valves, strainers and inspection ports
- Requires In-Wall Component ENM621



PRODUCT CODES

ENMWMC2L5	Wall Sensor Front of Wall Component On Demand Sensor - 12V Mains - 230mm Spout 6Lpm Laminar Flow
-----------	--

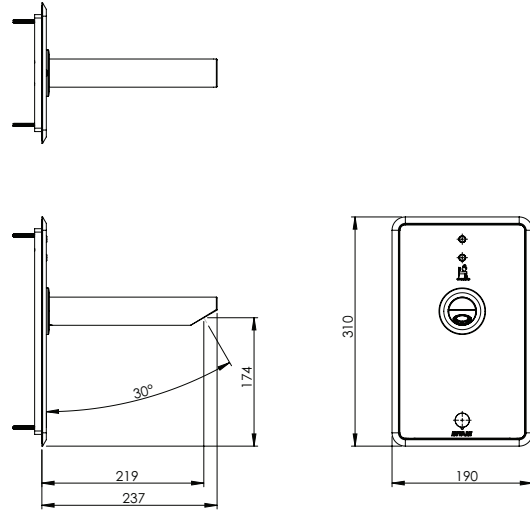
Order with:

ENM621	Wall Sensor In Wall Component - 12V Mains
--------	---

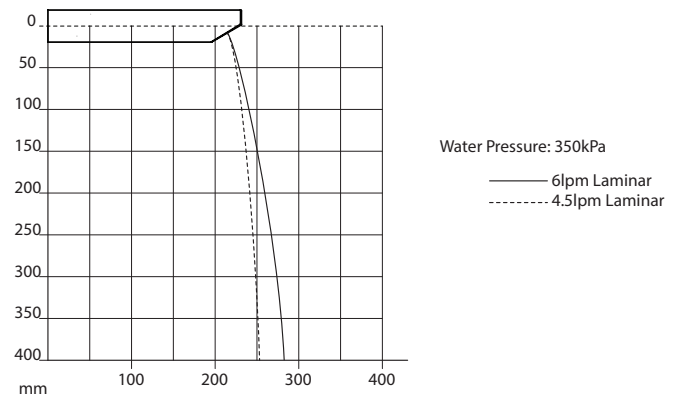
Enware Touch-Free Wall Sensor Tap On Demand Sensor Front of Wall Component - Mains - 230mm Spout

TECHNICAL INFORMATION

Sensor Range	20-100mm (Factory default setting - adjustable)
Water Run Time	15 secs (+/-1) after activation (Factory default setting - adjustable)
Sensor Power Supply	12VDC



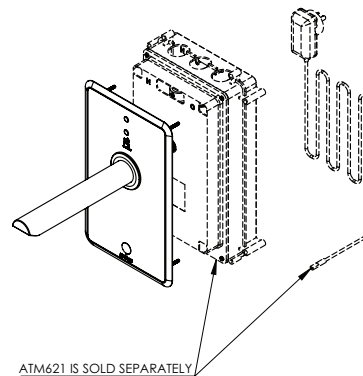
Water Flow Projection



Enware products are to be installed in accordance with the Plumbing Code of Australia and AS/NZS3500. Reference should also be made to the Australasian Health facility Guidelines (AHFG), ABCB and Local Government regulations when considering the choice of, and the installation of these products.

Enware Australia advises:

1. Due to ongoing Research and Development, specifications may change without notice.
2. Component specifications may change on some export models.
3. Refer to warranty statement for warranty details - www.enware.com.au/warranty



Version 1.1__13Dec22