

# Enware Purus Hands Free Sensor Tap - Single Temp. Mains Power - Chrome

High in quality and easy to use, the Enware Purus combines advanced electronic auto-focus technology with sleek yet robust design, a perfect choice for all commercial Hands-Free washroom applications

## KEY FEATURES

- Auto-focus infrared sensing technology with triangulation for a more consistent, reliable operation
- Improved user friendliness with intelligent activation and after-flow technology
- Integral isolation valve to speed up on-going servicing and maintenance
- Electronics have IP67 rated protection against water and humidity ingress
- High reach spout to aid handwashing
- 12V Mains supply or 6V battery operated models
- Robust basin fixing -ideal for high traffic or vandal prone applications
- Lead free brass
- Supplied with WELS 5 Star (5lpm) water efficiency rating as standard
- Sensor can be programmed on site for various functions: intelligent after flow of 1, 2, or 8 sec, periodic flush every 24hr or 72hr, and reduced sensitivity mode (via App.)



## PRODUCT CODE

ENM8220

Enware Purus Hands Free Sensor Tap -  
Single Temp. Mains Power - Chrome



Due to ongoing Research and Development, specifications may change without notice. Component specifications may change on some export models.

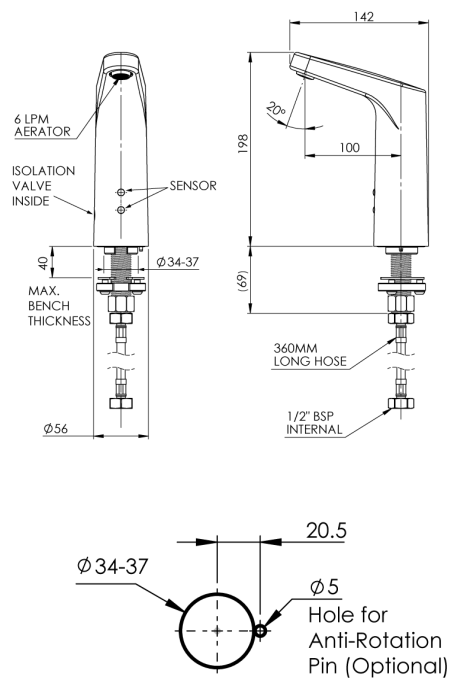
Refer to warranty statement for warranty details - [www.enware.com.au/warranty](http://www.enware.com.au/warranty).

Products are to be installed in accordance with the Plumbing Code of Australia and AS/NZS3500. Reference should also be made to the Australasian Health Facility Guidelines (AHFG), ABCB and Local Government regulations when considering the choice of, and the installation of these products.

# Enware Purus Hands Free Sensor Tap - Single Temp. Mains Power - Chrome

## TECHNICAL DATA

Inlet Connection	1/2" BSP PEX Connector
Working Pressure Range	100 - 500 kPa
Maximum Operating Temperature	70°C
Standard WELS Flow Rate	5 L/min
Sensor Range	Optimally preset using Auto-Focus technology
Maximum Flow Time	2 minutes per activation (adjustable)
Power - Mains	12V transformer with 4.5m lead Input: 100-240V~50/60Hz Output: +12V DC 1000mA
IP Rating	IP 67



Installation Detail  
(Benchtop Cut Out)  
Please check anti-rotation pin  
position before installation as  
orientation may vary.

(Not to Scale)