

Lutana Mental Health Shroud

A compact shroud suitable for Lutana 770 basin, offering a contemporary sanitary solution without ligature points. Suitable options for hospitals and aged care facilities.

KEY FEATURES

- No concealment areas
- No ligature points
- Domestic look, non-institutional
- Load tested to 450kg
- White powder coated
- Heavy duty 304 stainless steel frame



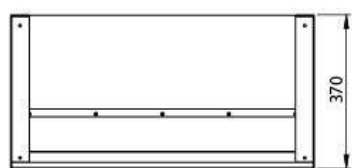
PRODUCT CODE

ELB4400-MH-770

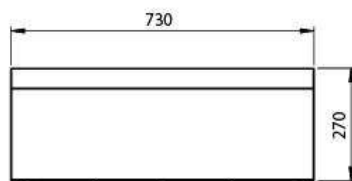
Lutana Mental Health Shroud

Due to ongoing Research and Development, specifications may change without notice.
Component specifications may change on some export models.
Refer to warranty statement for warranty details - www.enware.com.au/warranty.

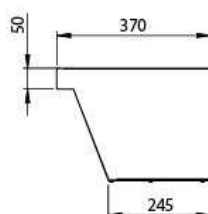
TECHNICAL DATA



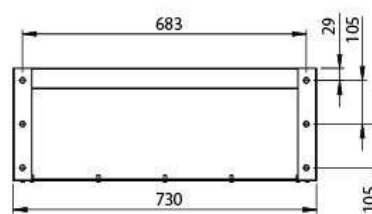
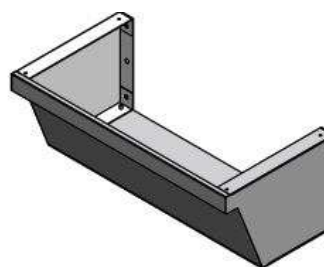
TOP VIEW



FRONT VIEW



SIDE VIEW



BACK VIEW