

Bench Mounted Swivel Eye Wash Hand Operated

Bench mounted swivel eyewash with hand activated stay open valve. When required, the emergency eye wash swivels over the sink, set at appropriate height and is conveniently out of the way during normal sink use.

KEY FEATURES

- Aerated outlets
- Ceramic disc stay open valve
- Chrome plated DZR brass body



PRODUCT CODE

EL570

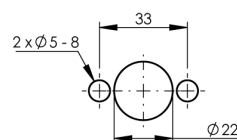
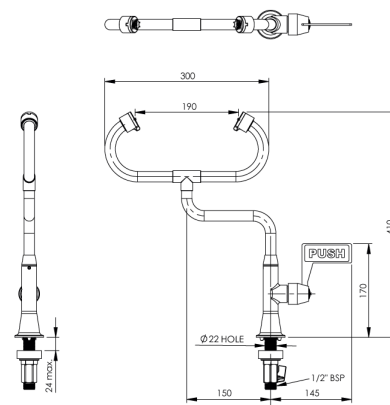
Bench Mounted Swivel Eye Wash Hand
Operated

Installation of emergency showers, eye and eye/face wash equipment shall be in accordance with AS/NZS4775 or ANSI Standard Z358.1 - whichever is applicable to the installation. Due to ongoing Research and Development, specifications may change without notice. Component specifications may change on some export models. Refer to warranty statement for warranty details - www.enware.com.au/warranty.

Bench Mounted Swivel Eye Wash Hand Operated

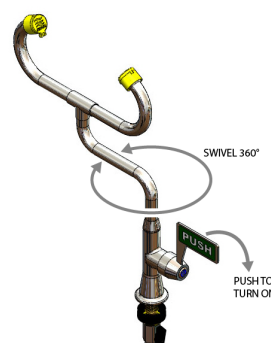
TECHNICAL DATA

Finish	Chrome
Inlet Connection	1/2" BSP male (DN15)
Water Supply Line Size	Must be hydraulically sized to meet requirements.
Minimum Recommended Pressure	80kPa
Maximum Recommended Pressure	500kPa
Minimum Pressure to achieve ANSI Z358.1 and AS4775 compliance	210kPa
Minimum Flow Rate	17 L/min
Suggested Flushing Water Temperature	Tepid 16°C min - 38°C max



INSTALLATION DETAIL
(BENCHTOP CUT OUT)

PLEASE CHECK LOCKING PIN
POSITIONS BEFORE INSTALLATION
AS ORIENTATION MAY VARY



OPTIONAL ACCESSORIES

ESS509	Emergency Eye Wash and/or Shower Sign: 250x250 - Poly
--------	--

Bench Mounted Swivel Eye Wash Hand Operated

SPARE PARTS

ESP034	Spare Parts: Aerator Av Outlets & Eyewash Dustcov X 2
SP304	Spare Parts: Aerator - Anti-Vandal - Key to Suit - No.7
ESS521	Emergency Shower and Eye Wash Inspection Tag Replacement
HOS380LTC	Spare Parts: Lever Action - SBA Ceramic Disc - Pillar/Bib/Basin/Sink - LTC