

Concealed Spindle Right Angle Cistern Tap - Jumper Valve

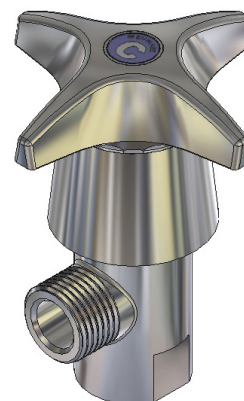
Concealed spindle tapware series is robust and vandal resistant. The ergonomically designed handle features a dress skirt which conceals the anti-vandal handle fixing and spindle.

Ideal for commercial, institutional and public amenity applications.

CS303

FEATURES:

- High quality dezincification resistant (DR) brass construction
- Vandal-resistant internal locking ring secures the handle which requires special key to release (key supplied)
- Serviceable with all wearing components replaceable, thus providing an even longer life
- Blue (Cold) indicator button supplied standard. Yellow (Warm) and Red (Hot) available on request - specify when ordering.
- Heavy duty bright chrome



Product Codes

CS303 Jumper Valve



Technical Information

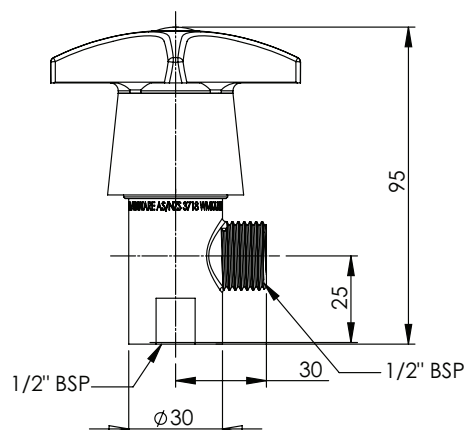
Working Pressure Range Ceramic Disc	50-800kPa 500kPa Max (PCA)*
Working Pressure Range Jumper Valve	30-1200kPa 500kPa Max (PCA)*
Maximum Working Temperature*	Ceramic Disc - 85°C Jumper Valve - 95°C

*Enware products are to be installed in accordance with the Plumbing Code of Australia and AS/NZS3500.

Reference should also be made to the Australasian Health facility Guidelines (AusHFG), ABCB Regulations and Local Building Codes when considering the choice of, and the installation of these products.

NOTE: Enware Australia advises:

1. Due to ongoing Research and Development, specifications may change without notice.
2. Component specifications may change on some export models.
3. Refer to Warranty Statement for Warranty details www.enware.com.au/warranty



Version 1.0__10Jan23

Call 1300 369 273
www.enware.com.au

Enware Australia Pty Limited
9 Endeavour Rd Caringbah NSW 2229 Australia
Ph: 02 8536 4000 info@enware.com.au

