

# The Custodian® Basin Outlet - On Wall Mounted

## Installation and Maintenance Instructions

**CNBSN-FF**



I00357\_FEB 23

**Call 1300 369 273**  
**[www.enware.com.au](http://www.enware.com.au)**

Enware Australia  
9 Endeavour Rd Caringbah NSW 2229 Australia  
Ph: 02 8536 4000 [info@enware.com.au](mailto:info@enware.com.au)



## technical data

Inlet Connection	1/2" BSP (15mm) Female
Operating Working Pressure	50 - 500 kPa
Flow Rate	8 l/m
Maximum Water Temperature	70 °C

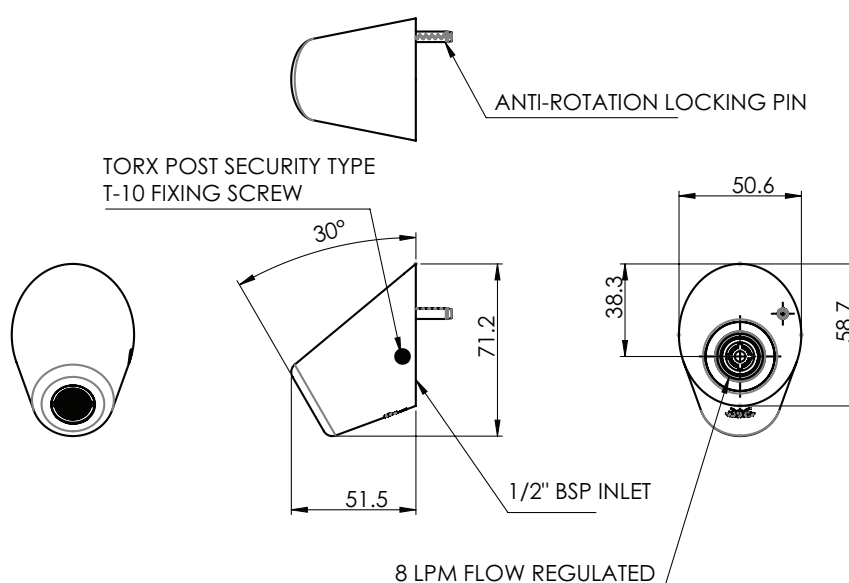
Enware products are to be installed in accordance with the Plumbing Code of Australia (PCA) and AS/NZS3500. Installations not complying with PCA and AS/NZS 3500 may void the product and performance warranty provisions.

Reference should also be made to the Australasian Health Facility Guidelines (AHFG), ABCB and Local Government regulations when considering the choice of, and the installation of these products.

NOTE: Enware Australia advises:

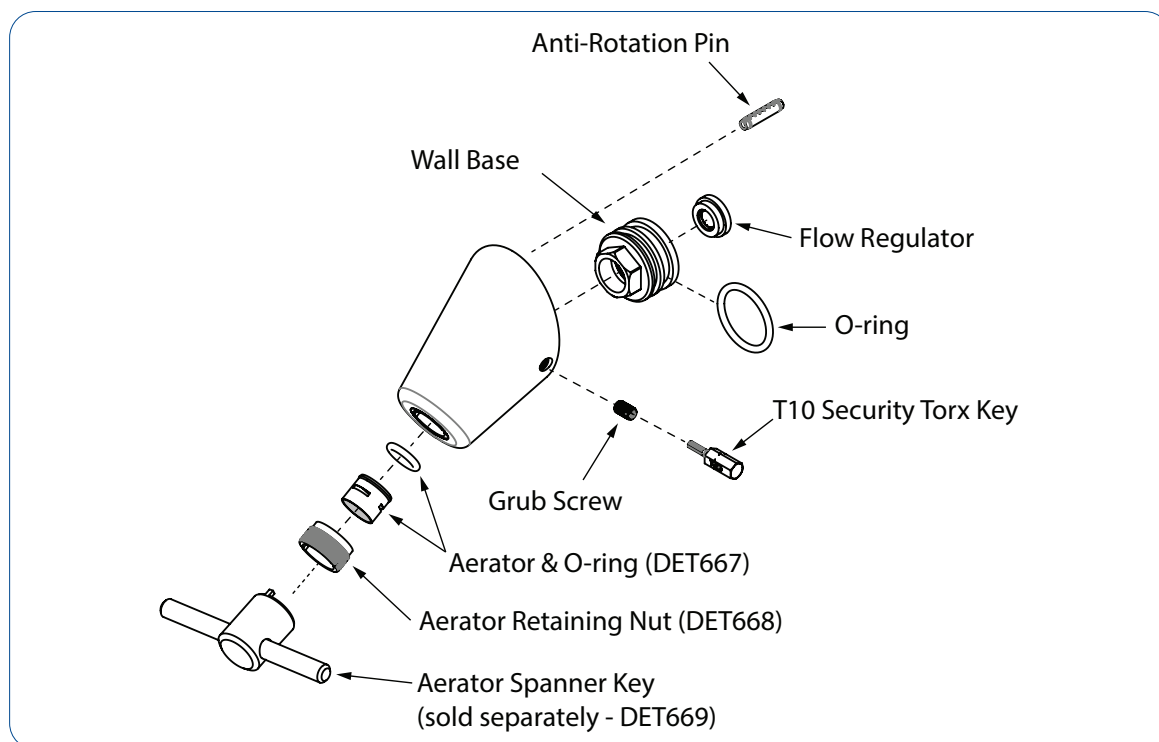
1. Due to ongoing research and development, specifications may change without notice.
2. Component specifications may change on some export models.

## dimensions



All measurements are in millimetres.

## components



## spare parts

Name		Part Code
Aerator & O-ring		DET667
Aerator Retaining Nut		DET668
Aerator Spanner Key		DET669
Wall Base		894067
Flow Regulator		671445
O-Ring BS119		672352
Anti-Rotation Pin 4mm x 20mm		672384
Grub Screw M5 x 8 Torx Post SS304		671880
Torx Key Post T-10 Driver Bit		671184

# installation

1. Determine position of the product to be installed.  
Consider the flow pattern of the water from the outlet to determine the height of the spout.

## BASIN OUTLET FLOW PROJECTION

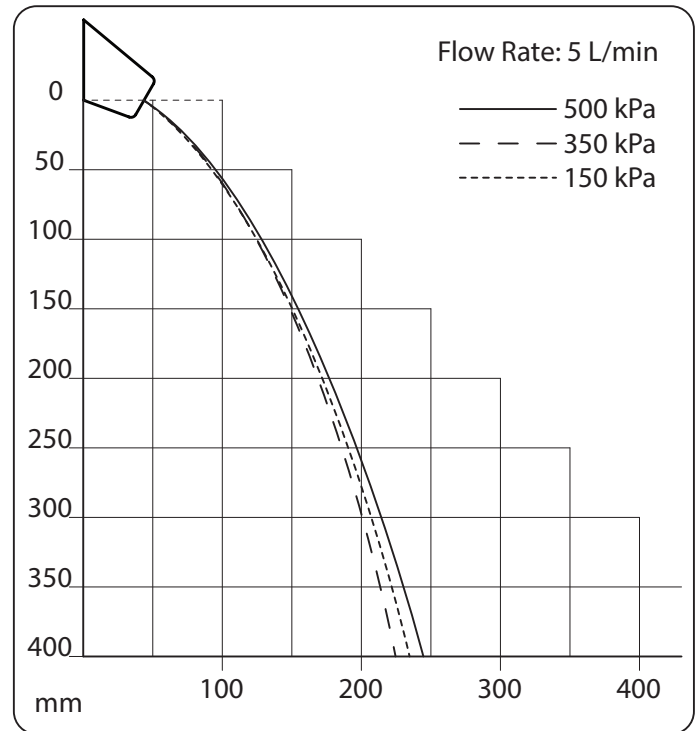
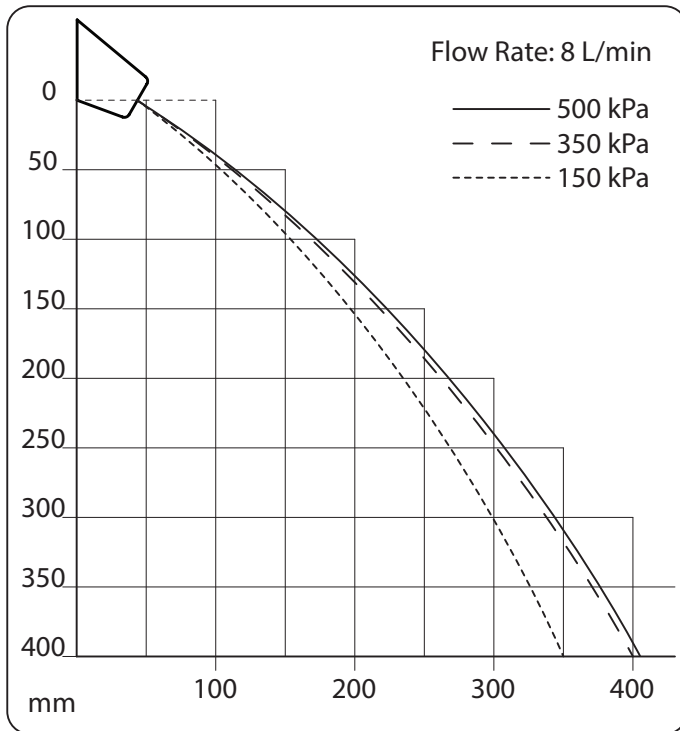


IMAGE 01

2. Prepare a 1/2" BSP thread on wall, allowing 10mm of thread to protrude from finished wall. SEE IMAGE 02

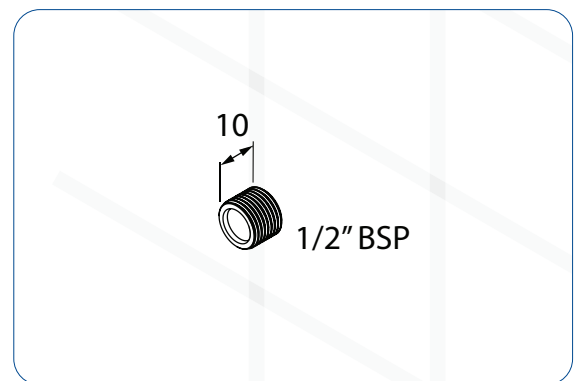


IMAGE 02

3. Flush the water supply line. Ensure there are no debris or contaminants.

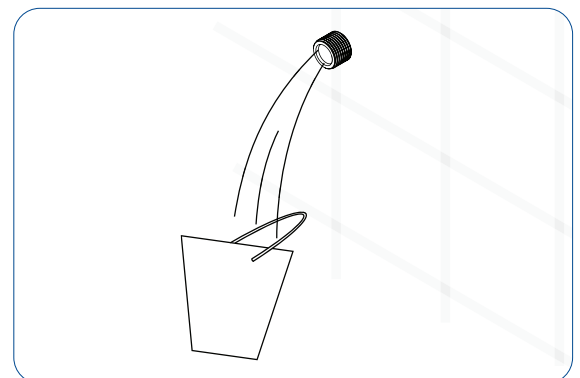


IMAGE 03

4. To disassemble wall base from spout, first unscrew the grub screw out of spout using the T10 Torx key supplied. Loosely screw a 1/2" thread fitting onto the female thread of wall base, and pull out the wall base from shower rose assembly.
5. Apply thread sealant to thread on wall.
6. Screw wall base onto thread, all the way until the wall base is tight against the finished wall. Use a spanner on the hex of the wall base to tighten. SEE IMAGE 04

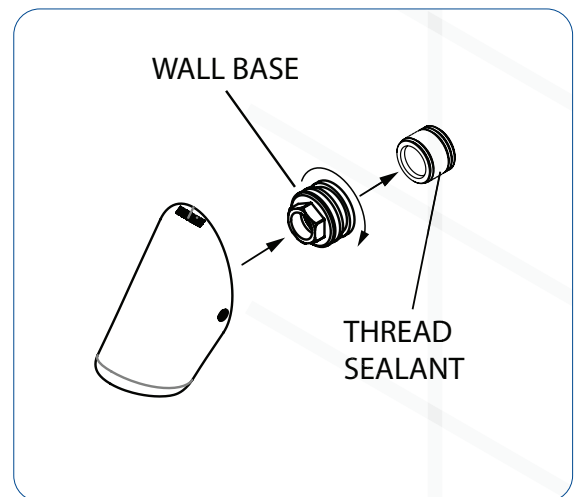


IMAGE 04

7. Fit spout onto wall to mark out the location for anti-rotation pin. Take off shower rose, then drill a hole on the marked position using a 5mm drill bit, 15mm deep.

Check position of anti-rotation pin before drilling as orientation may vary.  
SEE IMAGE 05

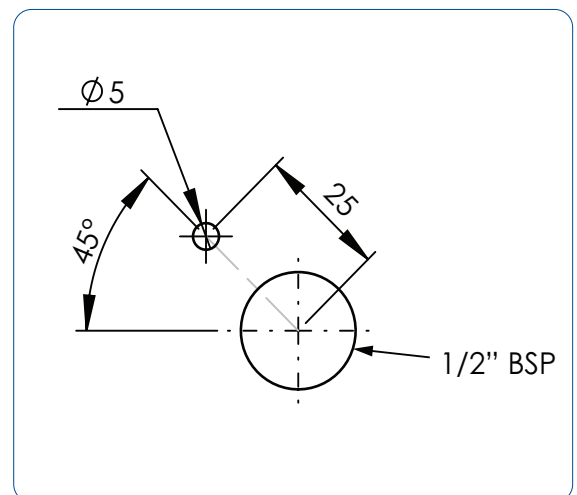


IMAGE 05

8. Fit spout back onto wall. If required, apply anti-pick silicone or silicone sealant of appropriate grade, around the edges on the contact surface. Push the shower rose all the way so that it is tight against the finished wall. Make sure the anti-rotation pin locates correctly and that there are no gaps between the wall and the shower rose.
9. Secure the shower rose in position with the grub screw. Use T10 Torx key to tighten the grub screw with a small spanner. Do not over-tighten. SEE IMAGE 06
10. Turn on water supply and test operation. Refer to Troubleshooting if there is any problem.

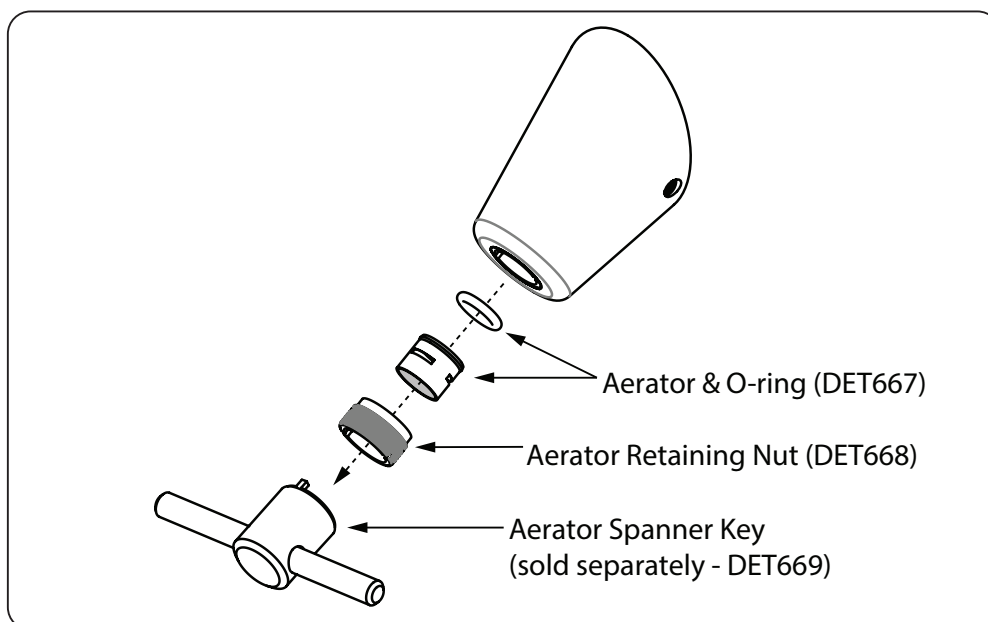


IMAGE 06

## troubleshooting

FAULT / SYMPTOM	CAUSE	RECTIFICATION
1. Poor water flow	* Debris in line	* Dismantle spout aerator and clean / reverse rinse aerator. * Dismantle flow control and clean. Replace if necessary.
2. Leaking from wall base	O-ring is damaged or missing	Check and clean or replace O-ring on the wall base

## access to aerator



## cleaning

Enware products should be cleaned with a soft damp cloth using only mild liquid detergent or soap and water. Do not use cleaning agents containing a corrosive acid, scouring agent or solvent chemicals. Do not use cream cleaners, as they are abrasive. Use of unsuitable cleaning agents may damage the surface. Any damage caused in this way will not be covered by warranty.

Enware Australia (“we” or “us”) warrants that this product (also referred to as “our goods”) will be free from all defects in materials and workmanship for 12 months from the date of purchase. Our liability under this warranty is limited at our option to the repair or replacement of the defective product or part, the cost of repair of the defective product or part or the supply of an equivalent product or part, in each case if we are satisfied the loss or damage was due to a defect in the materials or workmanship of the product or part. All products must be installed in accordance with the manufacturer’s instructions, the PCA, and AS/NZS3500 including any other applicable regulatory requirements.

---

## making a claim

To make a claim under this warranty you must notify us in writing within 7 days of any alleged defect in the product coming to your attention and provide us with proof of your purchase of the product and completed the Online Product Service and Warranty Form available on website [www.enware.com.au/product-service-enquiry](http://www.enware.com.au/product-service-enquiry).

All notifications and accompanying forms must be sent to us marked for the attention of the Enware Australia, 9 Endeavour Road, Caringbah NSW 2229. We can also be contacted by telephone (1300 369 273) or by email ([info@enware.com.au](mailto:info@enware.com.au)).

Your costs in making a claim under this warranty, including all freight, collection and delivery costs, are to be borne and paid by you. We also reserve the right at our cost to inspect any alleged defect in the product wherever it is located or installed or on our premises.

---

## exceptions

This warranty does not apply in respect of any damage or loss due to or arising from:

- a) Failure by you or any other person to follow any instructions for use (including instructions and directions relating to the handling, storage, installation, fitting, connection, adjustment or repair of the product) published or provided by us;
- b) Failure by you or any other person responsible for the fitting, installation or other work on the product to follow or conform to applicable laws, standards and codes (including the AS/NZ 3500 set of Standards, all applicable State and Territory Plumbing Codes, the Plumbing Code of Australia and directions and requirements of local and other statutory authorities); or
- c) Any act or circumstance beyond our control including faulty installation or connection, accident, abnormal use, acts of God, damage to buildings, other structures or infrastructure and loss or damage during product transit or transportation.

---

## other conditions

Except as provided or referred to in this document, we accept no other or further liability for any damages or loss (including indirect, consequential or economic loss) and whether arising in contract, tort or otherwise. Any benefits available to you under this warranty are in addition to any non-excludable rights or remedies you may have under applicable legislation, including as a “consumer” under the Australian Consumer Law. To that extent you need to be aware that: Our goods come with guarantees that cannot be excluded under the Australian Consumer Law. You are entitled to a replacement or refund for a major failure and for compensation for any other reasonably foreseeable loss or damage. You are also entitled to have the goods repaired or replaced if the goods fail to be of acceptable quality and the failure does not amount to a major failure.



**ADDRESS:** 9 Endeavour Rd Caringbah NSW 2229 Australia

**POSTAL ADDRESS:** P.O. Box 2545, Taren Point NSW 2229 Australia

**PHONE:** +61 2 8556 4000

**1300 369 273 (AUS) [WWW.ENWARE.COM.AU](http://WWW.ENWARE.COM.AU) [INFO@ENWARE.COM.AU](mailto:INFO@ENWARE.COM.AU)**