

# Care 700 Series Toilet S-Trap Raised Height with White Soft Close Seat

CARE700WSC-RH is a freestanding close coupled toilet, designed with your comfort in mind. With a raised height pan, this toilet provides greater ease and convenience for users. Perfect for those seeking independent living both assisted and unassisted, elderly individuals, or individuals with disabilities or mobility challenges, this toilet offers a comfortable solution for everyday needs. The elevated height reduces the effort required to sit down or stand up, making it an ideal choice for those recovering from hip or knee surgery.

The sleek design will seamlessly integrate into any bathroom deco and the innovative smooth curves simplifies cleaning and prevents the buildup of dirt to improve hygiene. The CARE700WSC-RH is also equipped with a soft-close seat and lid, providing a quiet and gentle closing mechanism to prevent slamming noises. Additionally, the toilet is constructed with high-quality vitreous China with surface treatment Ceramicplus (C+) for durability, longevity and quick cleaning, ensuring a reliable and functional bathroom fixture for years to come.

Featuring smarter Hygienic Flush, open rim flushing, for improved hygiene and an easier cleaning, and the space saving 45-degree installation, the CARE700WSC-RH is ideal for Aged Care, Independent living, and Residential uses.

Unique to Enware is the SecureFix floor fixing accessory, which provides a secure fix to floors. Used during installation SecureFix floor fixing accessory will ensure a secure floor fit even when support arms are installed without compromising waterproofing.



## PRODUCT CODE

CARE700WSC-RH	Care 700 Series Toilet S-Trap Raised Height with White Soft Close Seat
---------------	--



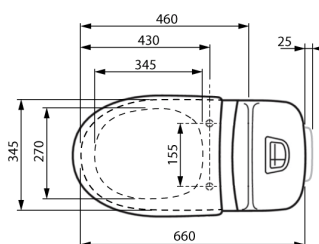
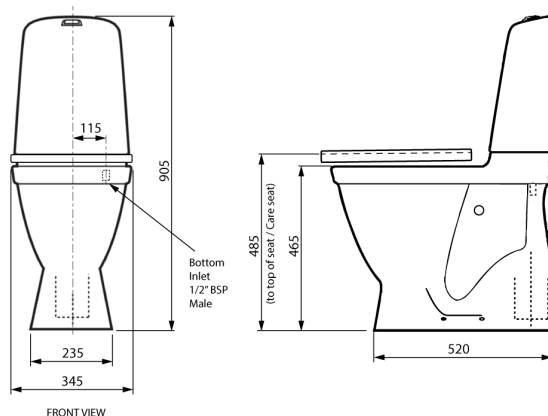
## KEY FEATURES

- Made from hygienic, durable and tightly vitrified China with surface treatment Ceramicplus (C+)
- Hygienic flush - open flush rim edge for simplified cleaning and a flush that reaches all the way for improved hygiene
- Fully glazed on back and inside open rim to avoid bacteria growth
- Raised height of 485mm with seat for better comfort
- Free standing space saving toilet suite, suitable for installation into a corner
- Allows for undisturbed coving seal
- Flush volume 4.5/ 3L WELS 4 Star
- Quiet refilling
- Soft Close White Double Flap quick release toilet seat included
- Toilet pan fixed to the floor using 4 stainless steel pan screws (supplied)
- Can be combined with armrest and optional Care seat for improved accessibility. Optional integral support arms with white Care seat - Product code: CAREARM-WDF

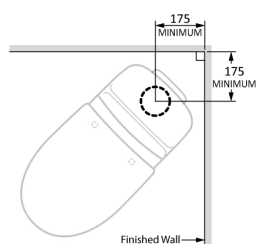
# Care 700 Series Toilet S-Trap Raised Height with White Soft Close Seat

## TECHNICAL DATA

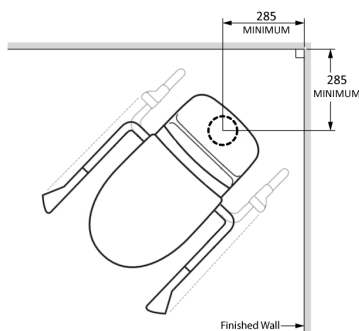
Water Supply Inlet Pressure	Min. 50 kPa - Max. 500 kPa
Inlet Connection	1/2" BSP
Water Inlet Connection Method	Bottom Inlet
Outlet Connection	DN100 DWV PVC Pan Collar
Flush Volume	4.5L Full Flush / 3L Half Flush (WELS 4 Star)
Pan Load Rating	400 kg



45 ° Corner Set Up

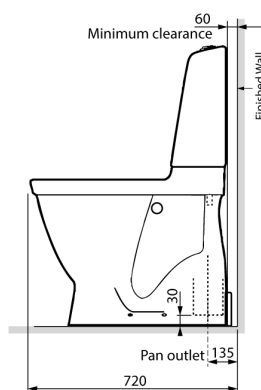


With No Arm Support System

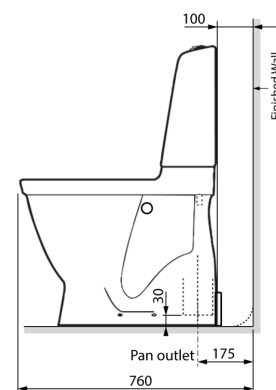


With Arm Support System

Minimum Set Out



Institutional / Health Set Out



Due to ongoing Research and Development, specifications may change without notice.

Component specifications may change on some export models. Refer to warranty statement for warranty details - [www.enware.com.au/warranty](http://www.enware.com.au/warranty).

Products are to be installed in accordance with the Plumbing Code of Australia and AS/NZS3500. Reference should also be made to the Australasian Health Facility Guidelines (AHFG), ABCB and Local Government regulations when considering the choice of, and the installation of these products.

# Care 700 Series Toilet S-Trap Raised Height with White Soft Close Seat

## OPTIONAL ACCESSORIES

CAREARM-WDF	Care Support Arms with White Double Flap Seat for Care 700 Series Toilets
CARE-WCFFP	SecureFit Floor Mounting Bracket Kit for CARE700 Series S-Trap Free Standing Toilets