

Smart Water Metering

Sydney Water System



SUB-METERING MADE EASY WITH
SYDNEY WATER APPROVED SYSTEM



FIXED & MOBILE SOLUTIONS AS PER THE
SYDNEY WATER MULTI-LEVEL INDIVIDUAL
METERING (MILM) POLICY



LOCAL STOCK & SUPPORT WITH
ONSITE ADVICE PROVIDED



DESIGNED TO MEET SYDNEY WATER
COMPLIANCE REQUIREMENTS

Request a
Quote Online

Find Out
More Info



Hydrus Ultrasonic Water Meters



Enware Australia are Sydney Water's approved water metering suppliers. Providing solutions for both sub-metering and commercial applications to support building management systems.

Enware Australia's range of Smart Water meters and remote reading solutions including the Hydrus Ultrasonic feature integrated RF 434MHz communication for remote reading of consumption data and alarms. All meters must comply with all Australian standards, NMI approval and meet Australian standard size.

The System Includes



Provides near real-time accurate reading (NOT-estimated), clearly tracking the usage of all supplies downstream of meters



Provides a simplified billing process and flexibility of scheduled billing cycles

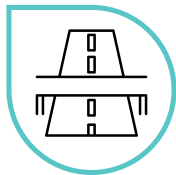


Provides interactive map showing meter locations visually to simplify tour reading



Built-in alarm detection for reverse flow, leakage, failure, low temperature, and tamper

Enware can provide metering solutions to suit your building type:



AMI Advanced Metering Infrastructure

A metering system to be used in buildings with **four floors or more**. This system transmits individual meter reading data directly to Sydney Water using the mobile phone network*



AMR Automated Meter Reading

A metering system to be used in buildings **three floors or less**. This system will allow the meter reader to electronically read all of the individual meters from outside the building using a handheld reader*

Request a
Quote Online



To design your individual solution, contact our experts at metering@enware.com.au

*as defined in Section 3 of the Sydney Water Multi-level Individual Metering Guide

Enware Smart Fixed Solutions

AMI - Advanced Metering Infrastructure

Hydrus Ultrasonic DN20-DN25 Cold Water Meter

Model: Hydrus Ultrasonic RF Water Meter, NMI and Watermark approved

Options: Meter with Couplings

Information: Generally, 1 x DN20 meter is required per amenity

Manufacturer: Diehl Metering

Country of Origin: Germany

Code: EHM5020SW
EHM5025SW



Hydrus Ultrasonic DN20 Cold Water Meter

Model: Hydrus Ultrasonic Water Meter DN20 Ball-Joint including ball valve and wall bracket

Options: Meter with assembly

Information: 1 x DN20 meter is required per apartment

Manufacturer: Diehl Metering

Country of Origin: Germany

Code: EHM5020SW-B



Enware Smart Mobile Solutions

AMR - Automated Meter Reading

IZAR Radio External Pulse

Model: IZAR External Radio - Pulse

Options: Meter reed switch will be required depending on the master meter (main) supplied by water authority

Information: One required per master meter supplied by water authority

Manufacturer: Diehl Metering

Country of Origin: Germany

Code: EHM200



IZAR RDC Remote Data Collector

Model: IZAR RDC Battery

Options: Meter with assembly

Information: Required on AMI system only Contact your Enware representative for design support to identify the building requirements

Manufacturer: Diehl Metering

Country of Origin: Germany

Code: EHM008-B



Smart Communication is Standard with Hydrus

1. Ultrasonic Meter Technology

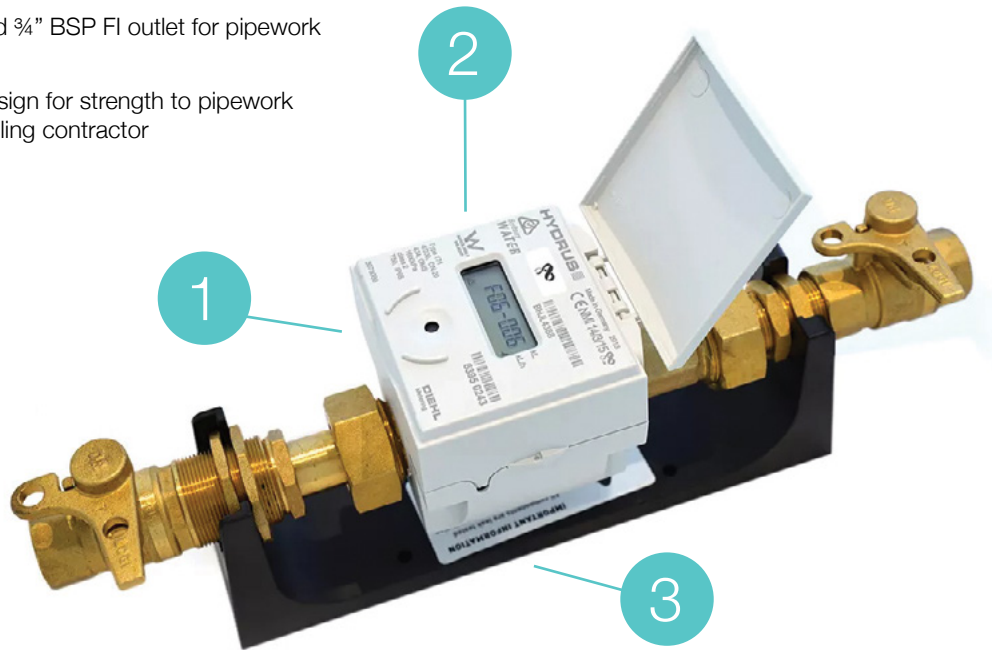
- Compact design, single unit for both water measurement and communication
- No moving parts and greater accuracy
- IP68 rated for protection against dust and immersion in water
- Battery lifetime up to 16 years

3. Installation Bracket

- Supplied with a sub-meter bracket for quicker installation
- Includes twin lockable ball valves for easy meter installation
- 3/4" BSP FI inlet and 3/4" BSP FI outlet for pipework connection
- Polymer plastic design for strength to pipework and safety to installing contractor

2. Data Integrity

- All data from the meter is sent as displayed – no additional components required
- Secure data transmission with DES (Data Encryption Standard) & Advanced Encryption Standard (AES) for Open Metering System (OMS)
- Alarms for: reverse flow, no consumption 'leaks', failure of ultrasonic or temperature element, low temperature (below 3°C), air in the measuring path, no volume measurement, low battery alarm (<400 days)
- LCD display for current total volume, current flow rate, remaining battery life (date), errors and alarms



1300 369 273 | enware.com.au | metering@enware.com.au