

Custodian[®]

Secure Bathroom Solutions



**IMPROVE USER WELLBEING, HYGIENE
& SAFETY IN A CUSTODIAL ENVIRONMENT**



**USER CONTROL OVER WATER FLOW &
TEMPERATURE AND RUN-TIME INDICATION**



DESIGNED FOR FAST & EASY INSTALLATION



**REMOTELY MONITOR & OPERATE
DAILY FUNCTIONS**

Custodian® The Story

Enware's Custodian® Secure Bathroom Solutions, are thoughtfully designed to improve user wellbeing, hygiene and safety in a custodial environment.

Custodian®'s modern and aesthetically pleasing design gives the user control over water flow and temperature with effortless adjustability, and the added benefit of LED backlit temperature and run-time indication. The robust, anti-ligature handle operates the unique Electronic Thermostatic Mixing Valve ensuring temperature stability from ambient to the pre-set maximum temperature. Piezo touch activation is also an option, and is standard for WC flushing.

Security and safety are top priorities with IK10 impact rating and IP68 water and dust resistance. Robust stainless steel fixtures combined with pleasant to touch, smooth, rounded finishes with strong anti-tamper features.

The flexible Custodian® range of products also supports a wide range of bathroom layout options, and is suitable for a multitude of construction methods. Designed for fast and easy installation, the plug-and-play cable connections from the control panels to the compact Smartboard makes the ideal installation package, freeing up precious duct space in the riser and reducing install and commissioning times dramatically.

The Smartboard is the compact operating centre for Custodian®, combining all the plumbing and cabling connections in one easy to install, pre-tested distribution hub. The Smartboard also provides the link to the Enware Smart Flow® system which is securely connected to the local area network.

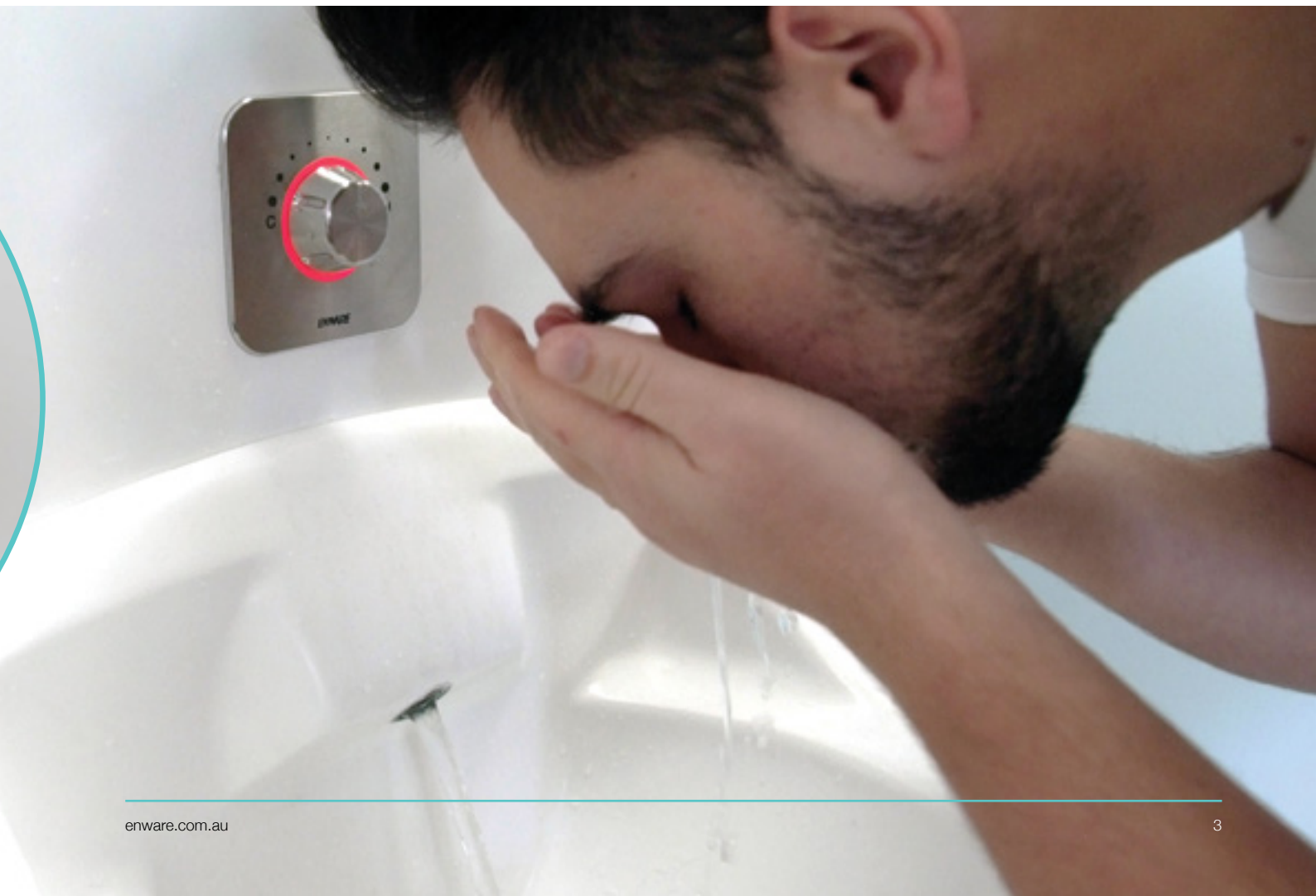
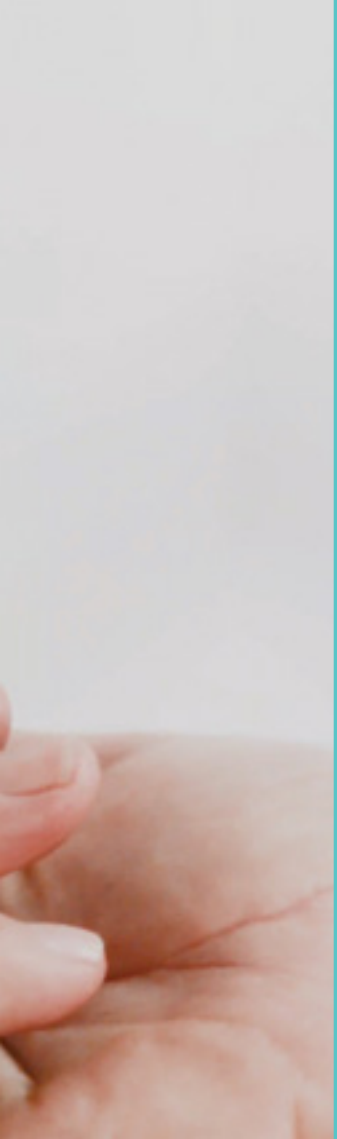
All of the Custodian®'s daily functions can be remotely monitored and operated. Automatic flushing of the basin and shower fixtures can be enabled during the construction phase, even before system commissioning, improving water health and reducing the risk of harmful bacteria forming in unused pipework prior to habitation.

Insight to the system's operation is securely made available with monitoring of water temperatures, usage, shutdowns and maintenance. Smart Flow®'s comprehensive data capture with custom tailored reporting of the entire system is the ideal facility and risk management tool.

Temperature adjustment with basin and shower on/off



Temperature adjustment with shower on/off



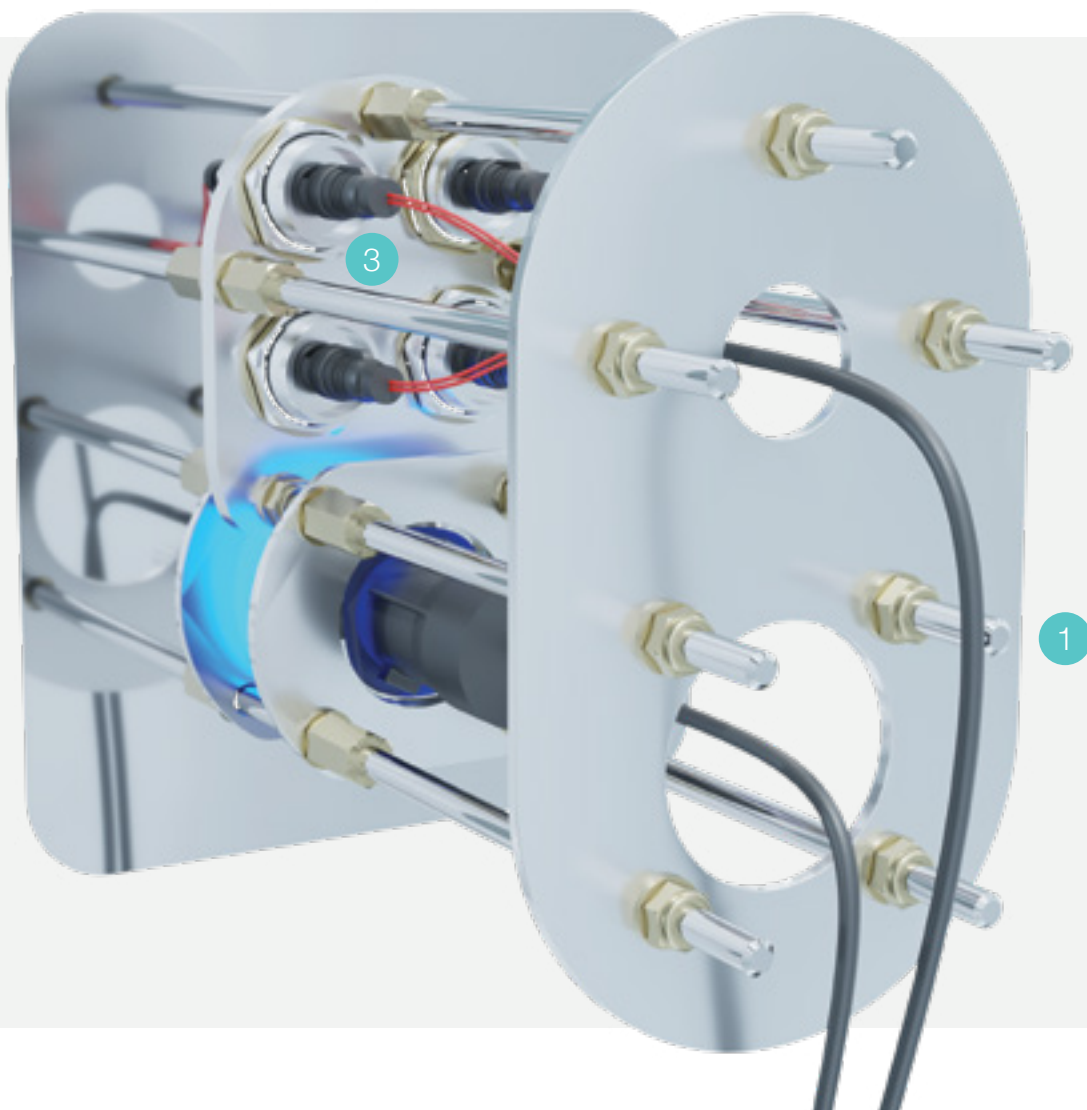
Custodian® Control Panel

1 Easy Installation

Quick and easy to install through block, brick or concrete panels. With secure fixings resistant to tampering. Saves space in the duct riser.

2 Enware Piezo Buttons

Durable, maintenance-free touch operated piezo buttons with IP68 rating.



3 Plug & Play Cables

Connect all functions to the Custodian® Smartboard with easy to connect IP 68 water and dust rated cables.

IK10 Impact Rating

Exceeds 5kg impact from steel pendulum ensuring structural integrity and vandal resistance.



Safety

Designed to exceed anti-ligature requirements of TS001:2013, TS001:2013 DHF (UK) Technical specification smooth and rounded controls with clear easy-to-see pictogram etchings.

4 Temperature Adjustment

Precision cold to warm temperature adjustment with graduated, backlit colour LED indication. Push button action control for on/off and temperature adjustment (some models).

Custodian[®] Smartboard

12VDC Power

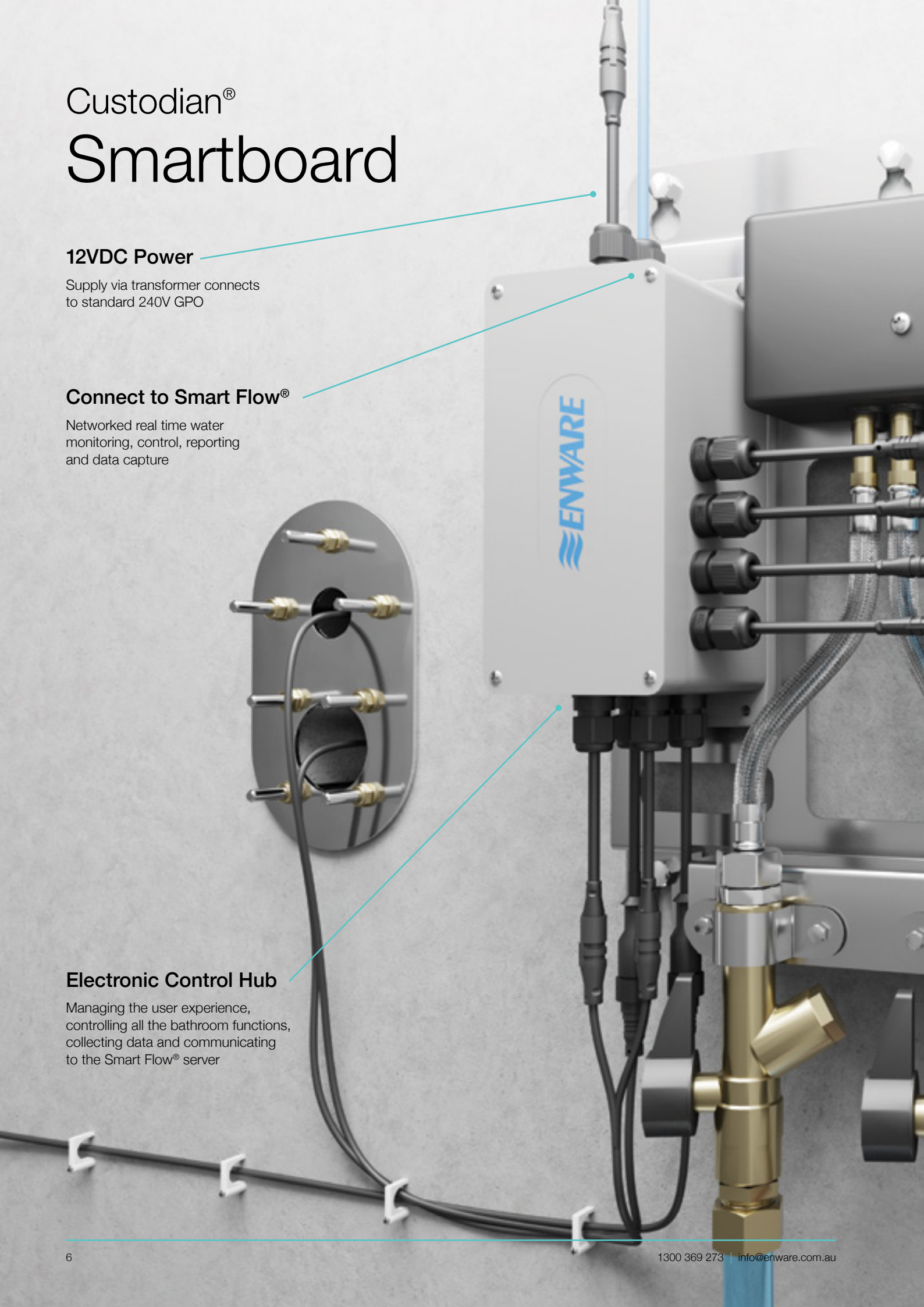
Supply via transformer connects
to standard 240V GPO

Connect to Smart Flow[®]

Networked real time water
monitoring, control, reporting
and data capture

Electronic Control Hub

Managing the user experience,
controlling all the bathroom functions,
collecting data and communicating
to the Smart Flow[®] server



Compact, easy to install and maintain, with hot and cold water, power and data connection points pre-fitted and tested as an assembly. This unique system allows the install of key components and the connection to plumbing, power and data in minutes.

Electronic TMV

Precise electronic thermostatic mixing of hot and cold water, constantly monitored by Smart Flow®

Solenoid Valves

Electronically activated shower, basin and toilet flushing valves

To Shower

To Handwash Basin

To WC Solenoid

Custodian® Range Options

Toilet Basin Shower Control Panel



Control panel for basin, shower and dual flush WC. With integrated backlit temperature control handle.

Models:

CN4BSHDFMIX

- FF - FP - RF - RP - SD

Will also require to complete installation:

WMSSB-001 – Smartboard

WMS8312 – WC Flushing Solenoid Assembly

WMS8004 – Single Cell Cable Package

Toilet & Basin or Shower Control Panel



Control panel for basin or shower and dual flush WC. With integrated button action backlit temperature control handle.

Models:

CN2DFMIXBT

- RF - RP - SD

Will also require to complete installation:

WMSSB-000 – Smartboard

WMS8312 – WC Flushing Solenoid Assembly

WMS8004 – Single Cell Cable Package

Shower & Basin Control Panel



Control panel for basin and shower. With integrated backlit temperature control handle.

Models:

CN2BSHMIX

- RF - RP - SD

Will also require to complete installation:

WMSSB-001 – Smartboard

WMS8004 – Single Cell Cable Package

Shower or Basin Single Control Panel



Control panel for basin or shower. With integrated button action backlit temperature control handle.

Models:

CNMIXBT

- FF - FP - SD

Will also require to complete installation:

WMSSB-000 – Smartboard

WMS8004 – Single Cell Cable Package

Toilet Flushing Control



Control panel Dual Flush or Single Flush WC.

Models:

CN1SF

- FF - FP - SD

CN2DF

- FF - FP - SD

Will also require to complete installation:

WMSSB-000 – Smartboard

WMS8312 – WC Flushing Solenoid Assembly

WMS8004 – Single Cell Cable Package

Toilet & Basin or Shower Control Panel



Control panel for basin or shower and dual flush WC. With integrated button action backlit temperature control handle.

CN2VDFMIXBT

- FF - FP

Shower & Basin Control Panel



Control panel for basin and shower. With integrated backlit temperature control handle.

CN2VSHBMIX

- FF - FP

Will also require to complete installation:

WMSSB-000 – Smartboard

WMS8312 – WC Flushing Solenoid Assembly

WMS8004 – Single Cell Cable Package

RP – No exposed fixings. Fixture mounted, initial install from front, service of controls from rear.

Requires fixtures to be made to Enware detail design.

FF – Front (exposed) fixings. Recessed mounting box, install and service of controls from the front.

FP – Front (exposed) fixings. Fixture mounted, install and service of controls from the front.

SD – No exposed fixings. Duct mounted, requires front and rear access for install and service.

RF – No exposed fixings. Duct mounted, install from front, service of controls from rear.

*WMSSB-001 will replace WMSSB-000 when more than one temperature control handle is being connected

Smartboard



Premounted with Electronic Control Hub, Electronic TMV, Solenoid Valves, isolation valves, braided hose and cabling.

Models:

WMSSB-000

- No solenoid for single temperature control handle connection

WMSSB-001

- Two solenoids for two temperature control handle connections

Shower Rose Wall Mount



Tubular style anti-ligature shower rose either wall mounted or duct mounted with anti-rotation pin and torx security grub screw for added safety.

Models:

CNSHR5

FF - SD

Shower Rose Ceiling Mount



Ceiling mounted shower rose, anti ligature with anti-rotation pin.

Models:

DET664

Flush Ceiling Mount



Flush mounted ceiling rose for in-duct connection with anti-rotation pin.

Models:

CNSHR5-FC

Detachable Handshower



Detachable Hand shower with quick fit connector (connects to CN-SHR5 *sold separately)

Models:

CNHNDSHHS-D

Basin Outlet (Wall)



Wall Mounted Basin Outlet, anti-ligature with anti-rotation pin.

Models:

CNBSN

-FF -SD

Basin / Bubbler Outlet



Hob Mounted Basin/Bubbler Outlet.

Models:

DET617

DET619 - Hi Flow

Single Cell Cable Package



Custom package of cables to connect in-room controls to the smartboard. Varies dependent on layout and product selection.

Models:

WMS8004

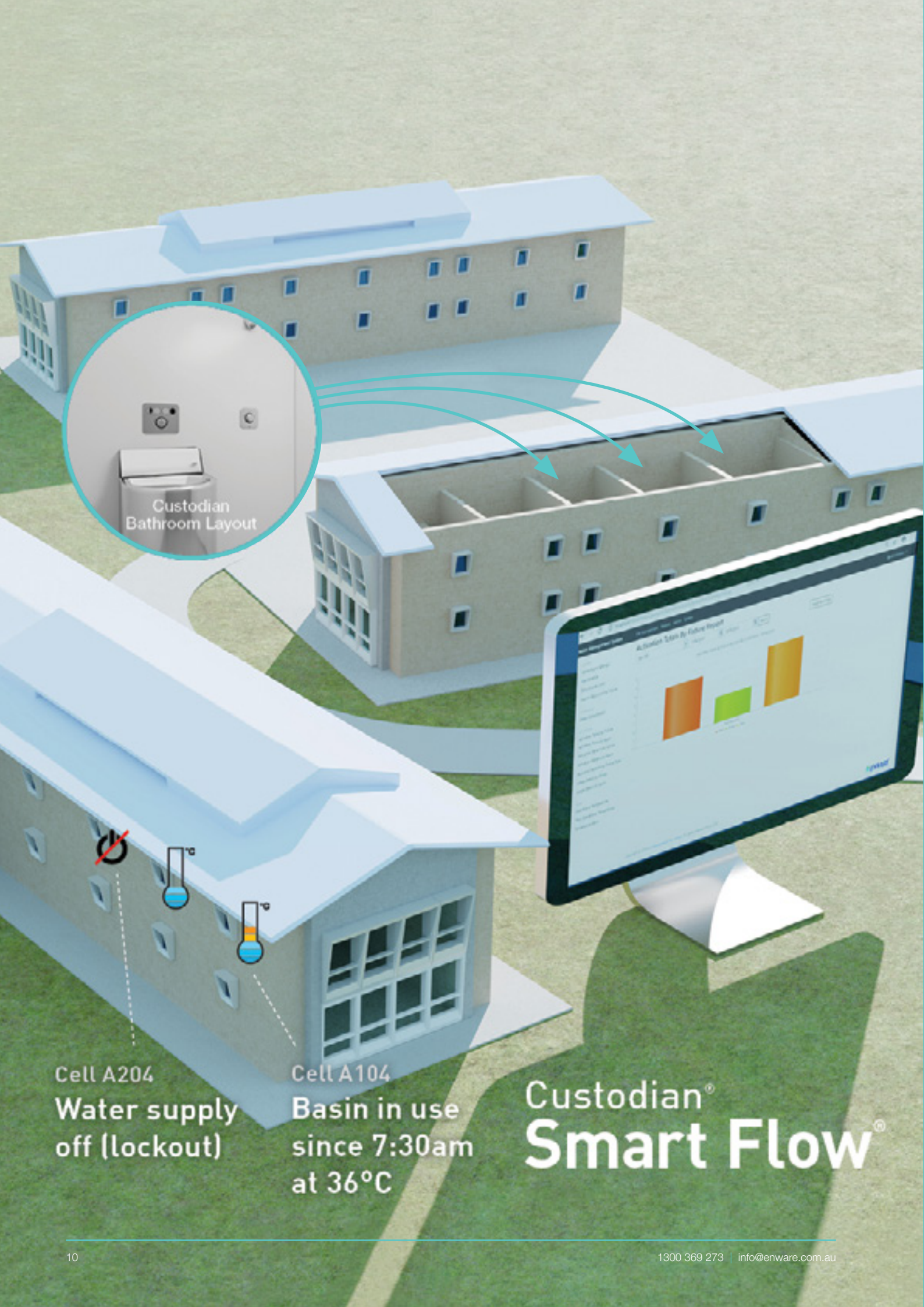
Flushing Solenoid & Valve



WC Flushing Solenoid with isolation, strainer and airbreak.

Models:

WMS8312



Custodian
Bathroom Layout

Cell A204
Water supply
off (lockout)

Cell A104
Basin in use
since 7:30am
at 36°C

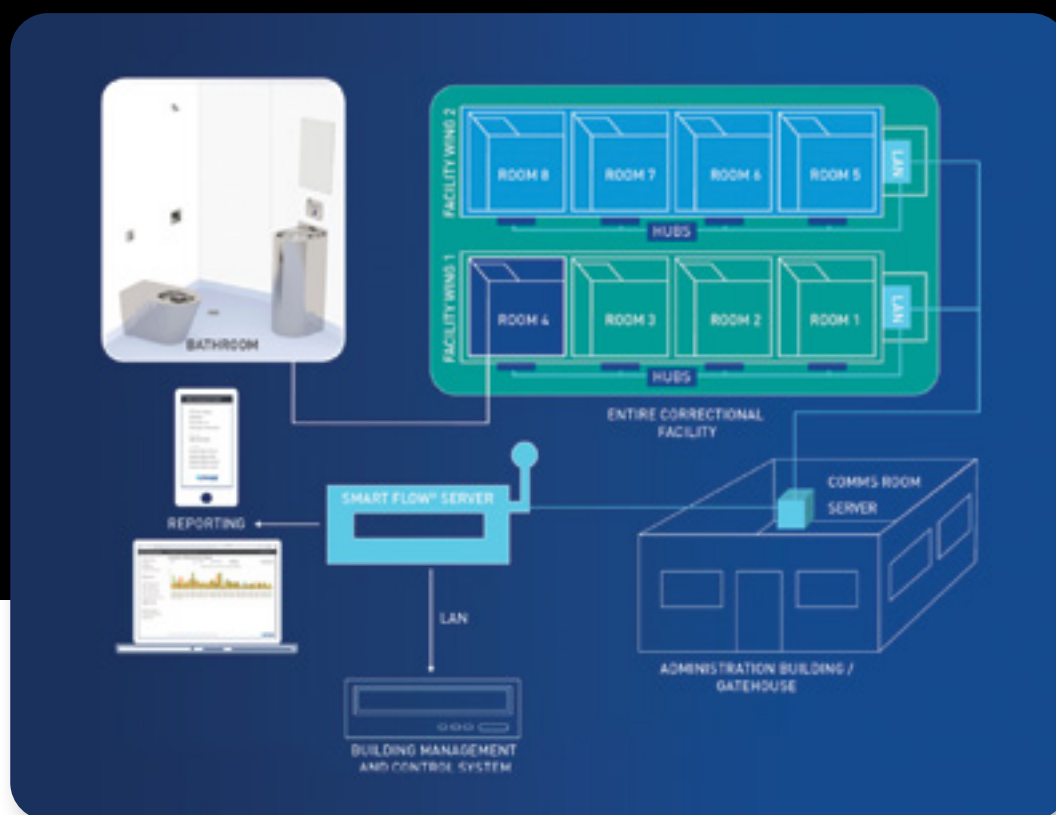
Custodian®
Smart Flow®

Custodian® Smart Flow®

Interact seamlessly with plumbed fixtures and receive accurate and reliable control and monitoring of all connection points.

Such as:

- Enable/disable
- Run times
- Lockouts
- Maximum daily use
- Morning/evening shower period
- Shower end warning



Enware has the capability to provide local support and system optimisation services throughout your project. From system design, installation, commissioning through to long term performance management.

Reporting

Multi-level intuitive dashboards allow for various levels of reporting, from individual fixtures to complete facility management. Reports and alarms can be customised to the user's requirements providing visibility on individual fixture water use, misuse and temperature monitoring. Reports can be accessed through a number of user interface types such as desktop, laptop or smart device.

Local Support & System Optimisation Services



1300 369 273 | enware.com.au | info@enware.com.au