

Hob Mounted Gooseneck Bottle Filler - Swivel and Fixed Spout

Refill and Refresh. It goes without saying that water is essential to our health and wellbeing and super important to keep our children well hydrated while at school. Encouraging good hydration habits means students need to have easy access to drinking water. Enware's bottle fillers are an easy way for school children to refill water bottles regularly throughout the day.

KEY FEATURES

- Vandal resistant design - handle and concealed aerator designed to be removed using a hand tool only
- Spout can be Fixed or Swivel. (Swivel spout with locking mechanism for fixed spout)
- 8 lpm laminar flow
- Valve has been designed for the rigours of daily use
- Robust design - chrome plated brass body
- Self-closing mechanism
- Left or Right Handed
- Anti-rotation pins



PRODUCT CODE

BUBBFGSH-C150	Hob Mounted Gooseneck Bottle Filler - Swivel and Fixed Spout
---------------	--



Due to ongoing Research and Development, specifications may change without notice.

Component specifications may change on some export models.

Refer to warranty statement for warranty details - www.enware.com.au/warranty.

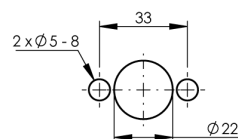
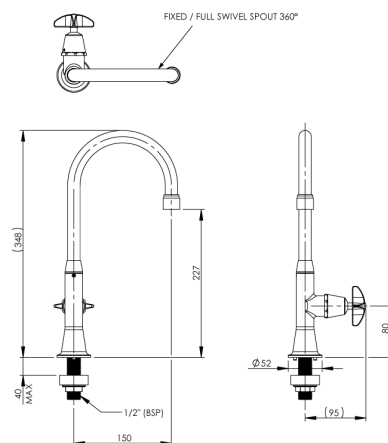
Products are to be installed in accordance with the Plumbing Code of Australia and AS/NZS3500.

Reference should also be made to the Australasian Health Facility Guidelines (AHFG), ABCB and Local Government regulations when considering the choice of, and the installation of these products.

Hob Mounted Gooseneck Bottle Filler - Swivel and Fixed Spout

TECHNICAL DATA

Inlet Connection	15mm (1/2"BSP)
Minimum Recommended Pressure	50kPa
Maximum Recommended Pressure	500kPa
Bottle Filler Flow Rate	8L/min
Minimum Recommended Temperature	5°C
Maximum Recommended Temperature	30°C
Maximum Operating Temperature	50°C
Max Bench Thickness	40mm



INSTALLATION DETAIL
(BENCHTOP CUT OUT)

PLEASE CHECK LOCKING PIN
POSITIONS BEFORE INSTALLATION
AS ORIENTATION MAY VARY

SPARE PARTS

BUB260C	Spare Parts: Stuffing Box Assembly - Cam Action
BUB261	Spare Parts: Spring Action Top Assembly - Cam Action
BUB221C	Spare Parts: Bubbler Dome - Cam Action
MIS590	Vandal Proof Key Only
MIS595RYB	Spare Parts: Indicator Button Kit - Hot / Cold / Warm - Stick On
SP303	Spare Parts: Aerator - Anti-Vandal - No.7 – includes aerator key
MK079	Spare Parts: Laminar Flow Insert Only - 7.6Lpm
SP304	Spare Parts: Anti-Vandal - Key to Suit Aerator - No.7