

Hob Mounted Bottle Filler - Push Button Action

Refill and Refresh

It goes without saying that water is essential to our health and wellbeing and super important to keep our children well hydrated while at school.

Encouraging good hydration habits means students need to have easy access to drinking water. Enware's range of bottle fillers are an easy way for school children to refill water bottles regularly throughout the day.

KEY FEATURES

- Vandal resistant design: Push button and concealed aerator designed to be removed using a hand tool only
- Valve has been designed for the rigours of daily use
- Robust design - chrome plated brass body
- Easy push button activation
- Self-closing mechanism
- 5 lpm Laminar Flow



PRODUCT CODE

BUB302B

Hob Mounted Bottle Filler - Push Button
Action



Due to ongoing Research and Development, specifications may change without notice.

Component specifications may change on some export models.

Refer to warranty statement for warranty details - www.enware.com.au/warranty.

Products are to be installed in accordance with the Plumbing Code of Australia and AS/NZS3500.

Reference should also be made to the Australasian Health Facility Guidelines (AHFG), ABCB and Local Government regulations when considering the choice of, and the installation of these products.

Version 11 March 2025

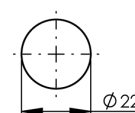
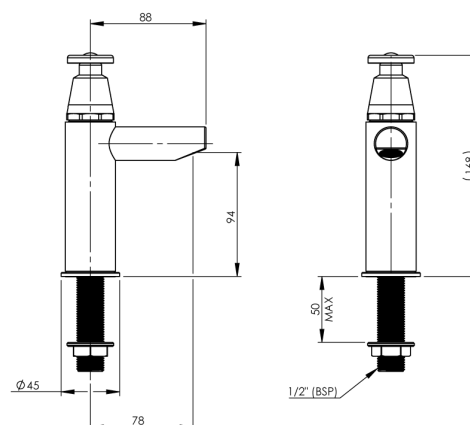
1300 369 273 | info@enware.com.au | enware.com.au

ENWARE
A WATTS Brand

Hob Mounted Bottle Filler - Push Button Action

TECHNICAL DATA

Inlet Connection	1/2" BSP (15mm)
Operating Working Pressure	50 - 500 kPa
Flow Rate	5 L/min
Recommended Temperature	5°C - 30 °C
Operating Temperature Range	0°C - 50 °C
Bench Thickness	50mm max.



INSTALLATION DETAIL
(BENCHTOP CUTOUT)

SPARE PARTS

BUB221L	Spare Parts: Bubbler Dome - Lever/Button Action
BUB260L	Spare Parts: Stuffing Box Assembly - Lever Action
MIS595RYB	Spare Parts: Indicator Button Kit - Hot / Cold / Warm - Stick On
BUB267	Bottle Filler - Push Button Top - Assembly Large
BUB289	Spare Parts: Spring Action Service Kit - Post 1997
BUB221L	Spare Parts: Bubbler Dome - Lever/Button Action