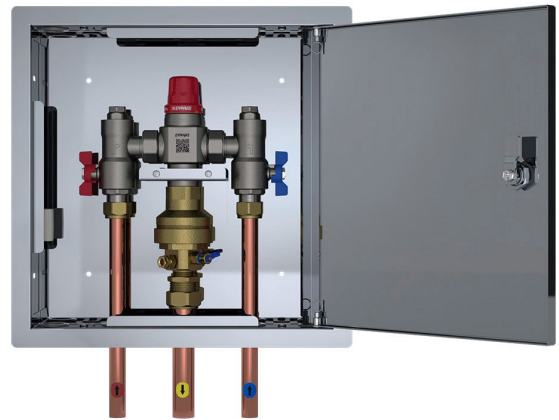


# Aquablend® 2500 Megamix Smartflow TMV in Stainless Steel Hinged Lid Cabinet 20mm Inlet/ 25mm Outlet Tails

Enware's Aquablend 2500 Megamix Thermostatic Mixing Valve is the solution for bathroom and washroom areas requiring high flow for multiple fixtures that may be in use simultaneously.

Compact enough to fit in a 75mm wall cavity, the Aquablend 2500 Megamix is ideal for large amenity areas, end of ride facilities, wash and changerooms, high-capacity bath filling (hospital birthing baths, spa's) and large apartments and houses with multiple bathrooms.

With precise temperature control to provide comfort and safety to prevent scalding, the Aquablend 2500 Megamix is a high performance, reliable and low cost-of-life solution for high flow mixed water delivery.



## KEY FEATURES

- High mixed water flow delivery for multiple outlets
- Thermal Flush temperature override for safe and simple disinfection with Aquablend Lift-Lever function
- Scald and thermal shock protection with rapid thermal shut-off should either the cold or hot water supply fails
- Highly responsive temperature control, maintaining outlet temperature within +/- 2°C under changing inlet temperature and pressure conditions
- Supplied complete with isolating valves, non-return valves and dual stage strainers incorporating temperature/pressure test ports
- Flexible installation - can be upside down or sideways, inlet and outlet connections may be rotated to suit pipework design
- Standards licensed to AS4032.1 - Thermostatic Mixing Valves
- Pre-Plumbed and tested in stainless steel, hinged lid, cabinet - 350mm x 350mm x 75mm
- 20mm Copper Inlet tails and 25mm Copper Outlet tail
- Smartflow enabled with temperature probe for Smartflow Warm Water System Monitoring

## PRODUCT CODE

ATMS727SFH-350	Aquablend 2500 Megamix Smartflow TMV in Stainless Steel Hinged Lid Cabinet 20mm Inlet/25mm Outlet Tails
----------------	---



Due to ongoing Research and Development, specifications may change without notice.

Component specifications may change on some export models.

Refer to warranty statement for warranty details - [www.enware.com.au/warranty](http://www.enware.com.au/warranty).

Products are to be installed in accordance with the Plumbing Code of Australia and AS/NZS3500.

Reference should also be made to the Australasian Health Facility Guidelines (AHFG), ABCB and Local Government regulations when considering the choice of, and the installation of these products.

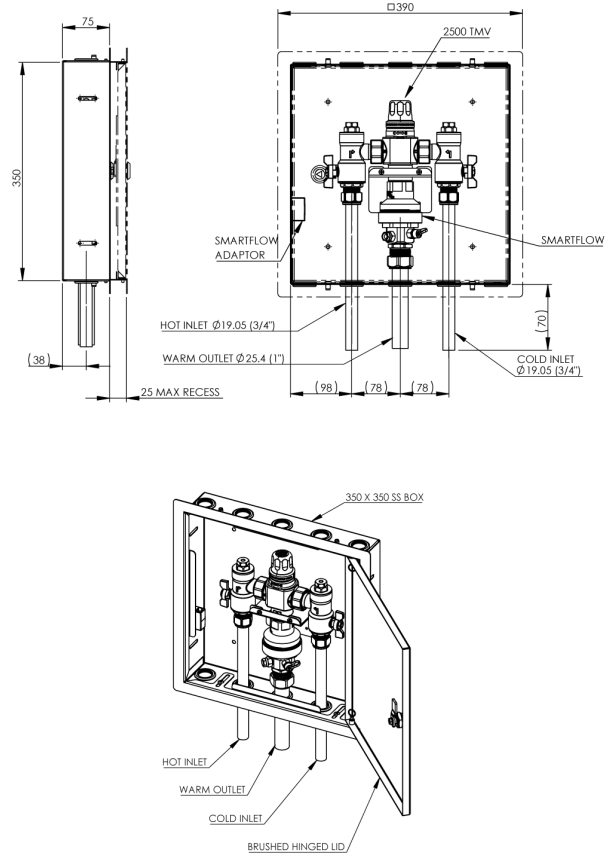
# Aquablend® 2500 Megamix Smartflow TMV in Stainless Steel Hinged Lid Cabinet 20mm Inlet/ 25mm Outlet Tails

## TECHNICAL DATA

Thermostatic Temperature Range	Min 35°C Max 50°C (+/- 2°C) Set during installation/ commissioning
Dynamic Inlet Pressures*	Min 20 kPa Max 500 kPa
Static Inlet Pressure	Max. 1600kPa For testing purposes/ system commissioning
Hot Temperature Supply Range	Min 55°C Max 90°C
Cold Temperature Supply Range ^	Min 5°C Max 30°C
Minimum Temperature Differential	10°C Between hot supply and outlet mix temperature, required to ensure correct function of valve
Inlet Pressure Ratio	H - PL = H¹ C - PL = C¹ H¹ : C¹ = Max 10:1 C¹ : H¹ = Max 10:1 H = Hot inlet pressure C = Cold inlet pressure PL = Pressure Loss
Inlet Connection	20mm (Nom.) OD Copper Tails
Outlet Connection	25mm (Nom.) OD Copper Tails
Flow Rates	Min. 4 L/min For stable outlet temperature Max. 80 L/min@300 kPa pressure loss
Valve Material	Nickel plated lead-free brass

\* AS3500.4-2021 Clause 10.4.2 - 10% maximum dynamic pressure differential between hot and cold supplies

^ Where cold inlet temperature may exceed recommended range due to seasonal variation, a 5°C temperature differential between the inlet cold supply and outlet mixed temperature setting must be maintained.



Head Loss Characteristics of Aquablend 2500 Megamix TMV  
(mix temperature at 42°C at Valve Outlet)

