

A

B

C

D

350.0

HOT IN

COLD IN

1500 TMV

SMARTFLOW

SMARTFLOW
ADAPTOR

350.0

WARM OUT

COLD BYPASS

(78.0)

(153.0)

(37.9)

75.0



ENWARE RESERVES THE RIGHT TO
AMMEND PRODUCT
SPECIFICATIONS AND DESIGNS
WITHOUT NOTICE

GENERAL NOTES:

- DIMENSIONS ARE IN mm's
- DO NOT SCALE OFF DIMENSIONS
- TAPWARE TOLERANCE / 2 (EXCEPT WHERE STATED)
- SAFETY SANITARY AND CARE TOLERANCE / 5 (EXCEPT WHERE STATED)

This drawing is the
property of Enware
Australia Pty Ltd and
may not be reproduced
in full or part without the
written consent of
Enware Australia.



DRAWN

CHECKED

APPROVED

AK



9 Endeavour Rd,
Caringbah, NSW, 2229

Ph. +61 2 8536 4000
Email: info@enware.com.au

DRAWING NUMBER ATMS718SF-350

REV

DESCRIPTION AQ 1500 S/S CABINET W/ STRAIGHT CW
BYPASS+SF

FINISH:

SIZE: A4

SCALE: 1:5

A

B

C

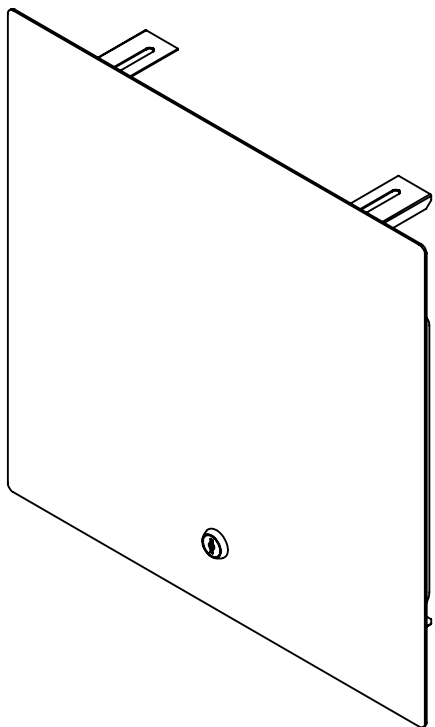
D

A

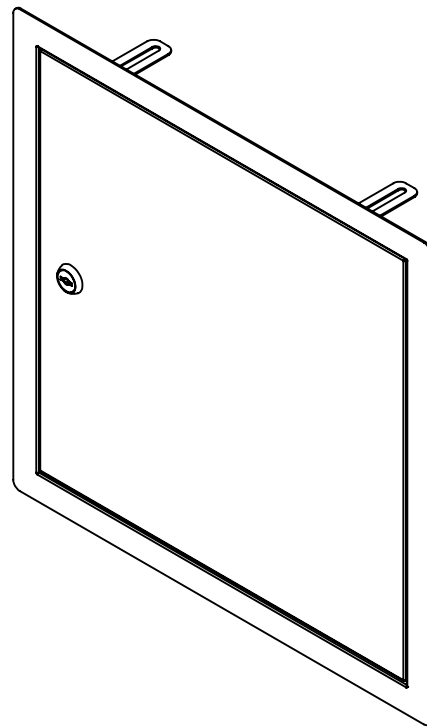
B

C

D

ATMS718-350 OPTIONS

ATMSRL-350
LID-RECESSED ASSY TO SUIT 350X350 CAB



ATMSHL-350
LID-HINGED ASSY TO SUIT 350X350 CAB

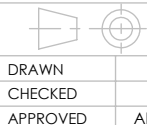
NOTES:-

1. POWDER COATING AVAILABLE (WILL REQUIRE LONGER PROCESSING TIME AND INDIVIDUAL QUOTATION)

**GENERAL NOTES:**

- DIMENSIONS ARE IN mm's
- DO NOT SCALE OFF DIMENSIONS
- TAPWARE TOLERANCE / 2 (EXCEPT WHERE STATED)
- SAFETY SANITARY AND CARE TOLERANCE / 5 (EXCEPT WHERE STATED)

This drawing is the property of Enware Australia Pty Ltd and may not be reproduced in full or part without the written consent of Enware Australia.



9 Endeavour Rd,
Caringbah, NSW, 2229

Ph. +61 2 8536 4000
Email: info@enware.com.au

DRAWING NUMBER ATMS718SF-350

REV

DESCRIPTION
AQ 1500 S/S CABINET W/ STRAIGHT CW BYPASS+SF

FINISH:

SIZE: A4

SCALE: 1:5

A

B

C

D