

# Pressalit Care PLUS 450 Shower Seat – Manually Height Adjustable for Mounting on Horizontal Wall Track

Anodised aluminium vertical wall track with soft non slip seating platform, backrest and armrests. Manually operated to raise and lower the shower seat, backrest and armrests. Has the ability to also be moved horizontally if needed.

## EP-R7450182

### FEATURES

- Supportive deep seating area suited to adults
- Weight loading capacity 150kg
- Vertically adjustable up to 380mm
- Armrests can be adjusted independently of the backrest
- Warm, non-slip seat surface with water run off slant
- Ideal for users who need upper body support
- Conveniently folds up when not in use
- Easily released and lowered in one movement
- Hygienic profile design minimises cleaning
- 3 year warranty

### OPTIONS

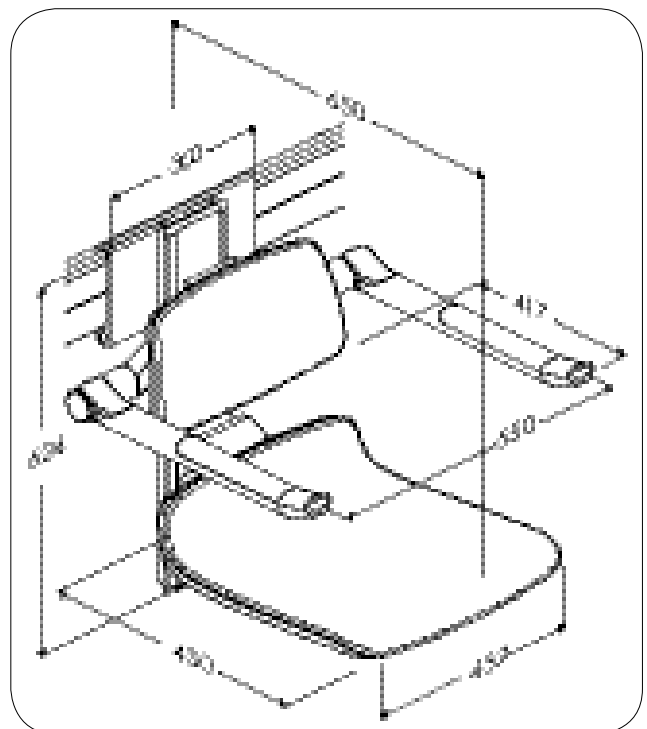
- Horizontal wall track 1200mm long      EP-R9812182
- Horizontal wall track 900mm long      EP-R9809182
- Seat with aperture version available
- Wide range of bright and vibrant colours available that help with dementia and visual impairment



### Product Codes

**EP-R7450182000** Pressalit PLUS Shower Seat with Backrest and Armrest - White

**EP-R7450182112** Pressalit PLUS Shower Seat with Backrest and Armrest - Anthracite Grey



Version: May 14

Call 1300 369 273

[www.enware.com](http://www.enware.com)

Enware Australia Pty Limited

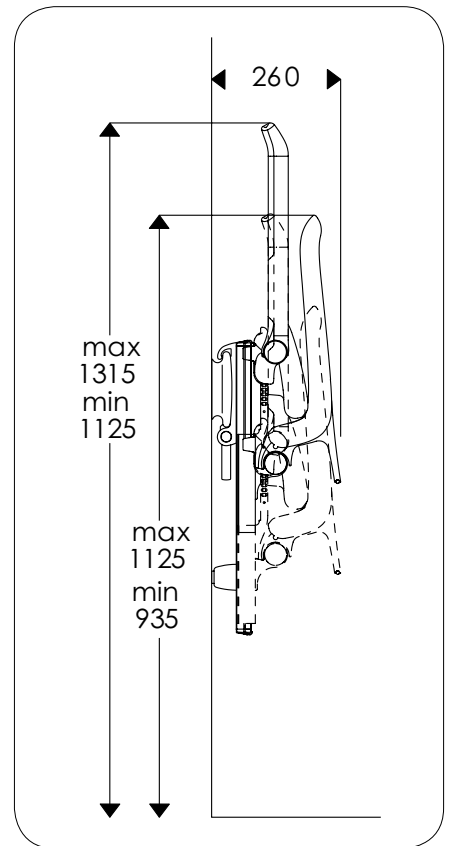
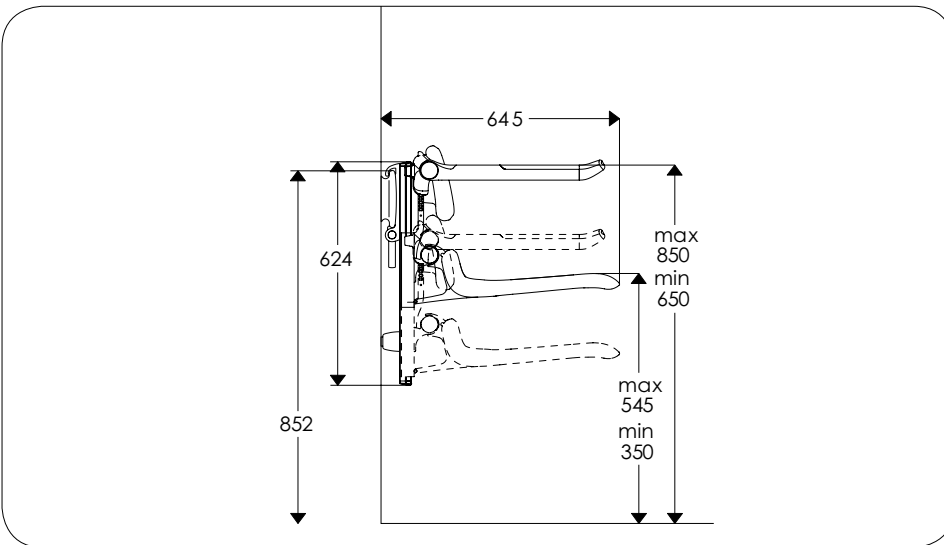
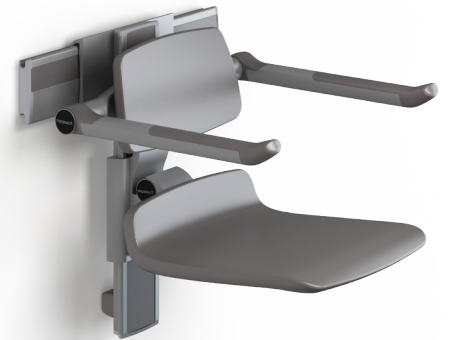
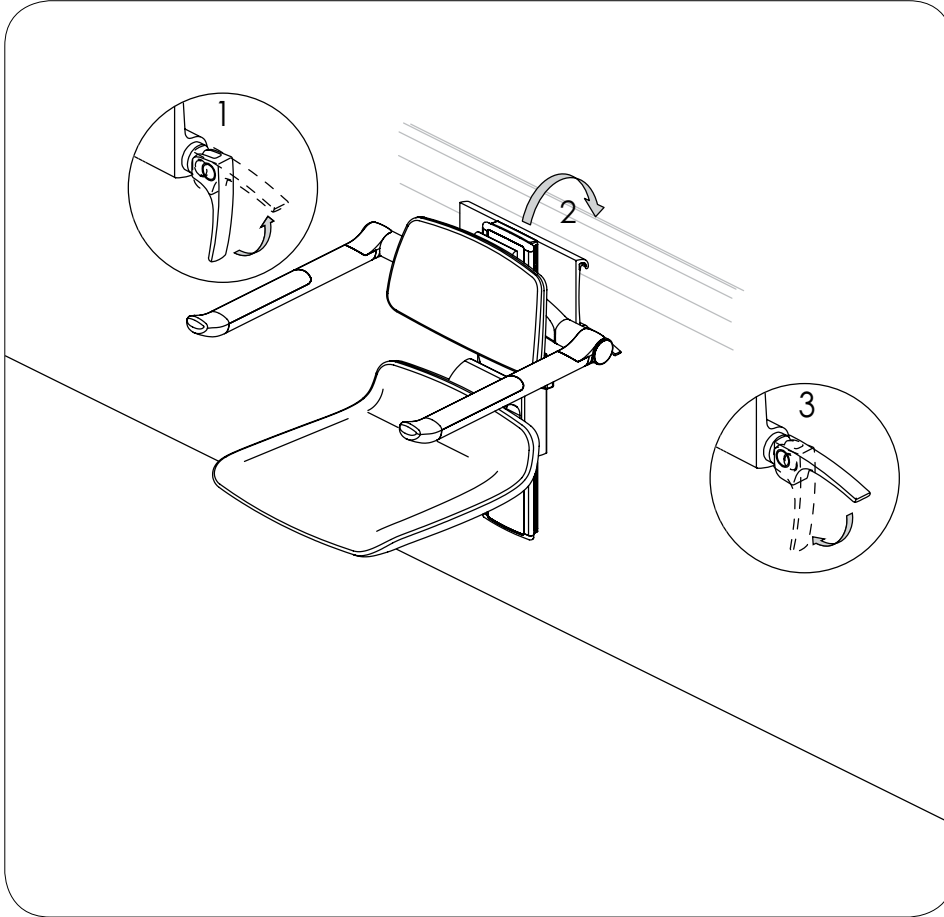
9 Endeavour Rd Caringbah NSW 2229 Australia

Ph: 02 8536 4000 Fax: 02 8556 4055

  
installingconfidence

# Pressalit Care PLUS 450 Shower Seat – Manually Height Adjustable for Mounting on Horizontal Wall Track

**EP-R7450182**



Version: May 14

**Call 1300 369 273**

**[www.enware.com](http://www.enware.com)**

Enware Australia Pty Limited

9 Endeavour Rd Caringbah NSW 2229 Australia

Ph: 02 8536 4000 Fax: 02 8556 4055

**ENWARE**

installing**confidence**