

Dania 50mm Raised Pressalit Care Toilet Seat White Double Flap

EP-R33000

Ageing and certain disabilities present people with difficulty in sitting down and standing up from a normal height toilet. This raised seat can help to alleviate transfer issues from a wheelchair, and is an economical method of converting standard height pans to meet disabled requirements. Can be securely fixed to a toilet pan that allows external hinge access.

KEY FEATURES

- 50mm raised toilet seat, with stabilising buffers
- Suitable for sideways transfers
- Double flap (seat with lid)
- Comfortable design
- Supplied with stainless steel extra strong bar D92 hinge as standard
- Made by Pressalit in Denmark with 5 year warranty



PRODUCT CODES

EP-R33000	Dania 50mm Raised Pressalit Care Toilet Seat - White Double Flap
-----------	--

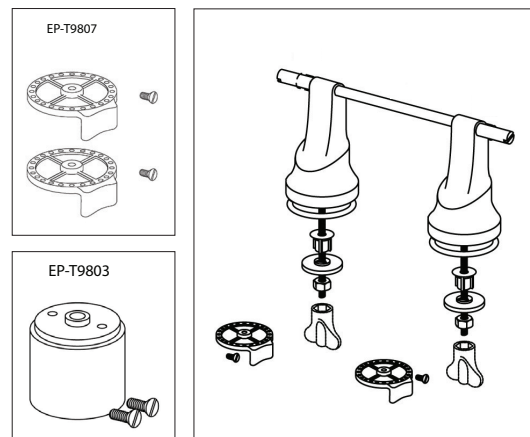
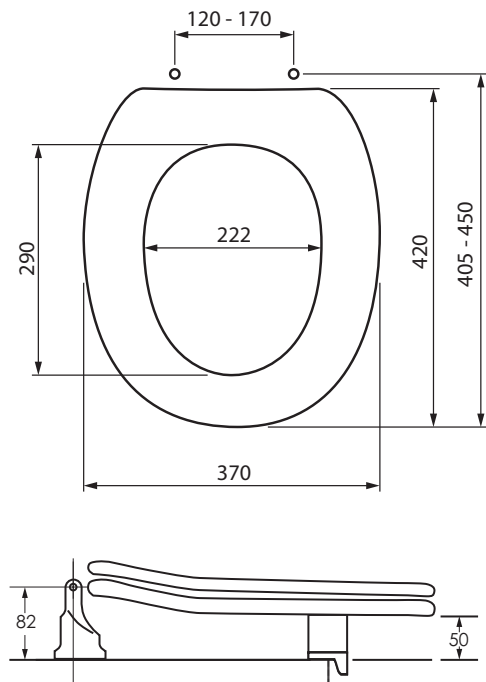


Version: Mar 22

Dania 50mm Raised Pressalit Care Toilet Seat White Double Flap

TECHNICAL INFORMATION

Material	Seat/ Lid: Thermoset plastic (urea) Strap: Stainless steel V2A Raiser: Nylon (PA) Special buffer: ABS-plastic
Maximum Weight Capacity	150 kg (This product has been tested statically up to 225 kg.)
Mounting	Bottom mounted hinge
Gross Weight	4.2 kg



Enware Australia advises:

1. Due to ongoing Research and Development, specifications may change without notice. 2. Component specifications may change on some export models. 3. Refer to warranty statement for warranty details - www.enware.com.au/warranty

Version: Mar 22