

Enware Touch-Free Wall Sensor Tap In-Wall Component - Mains

ENM621

Touch-free sensor tap designed for general hand hygiene within health care and food preparation facilities.

KEY FEATURES

- In-Wall component for ENMA and ENMW series sensor tap
- Low voltage 12V mains power supply
- IP67 rated connections
- Compatible with Smartflow Monitoring System for TMV monitoring and reporting
- Back and front of wall components offered may be ordered and supplied separately to meet construction needs
- Requires Front-of-Wall component



PRODUCT CODE

ENM621	Wall Sensor In Wall Component - 12V Mains
--------	---

Options:

SFM-HE01	Single Probe Kit for Connection to Smartflow TMV Monitoring System
----------	--

Front of Wall Component Options:

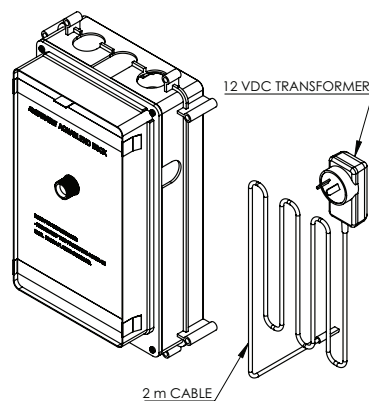
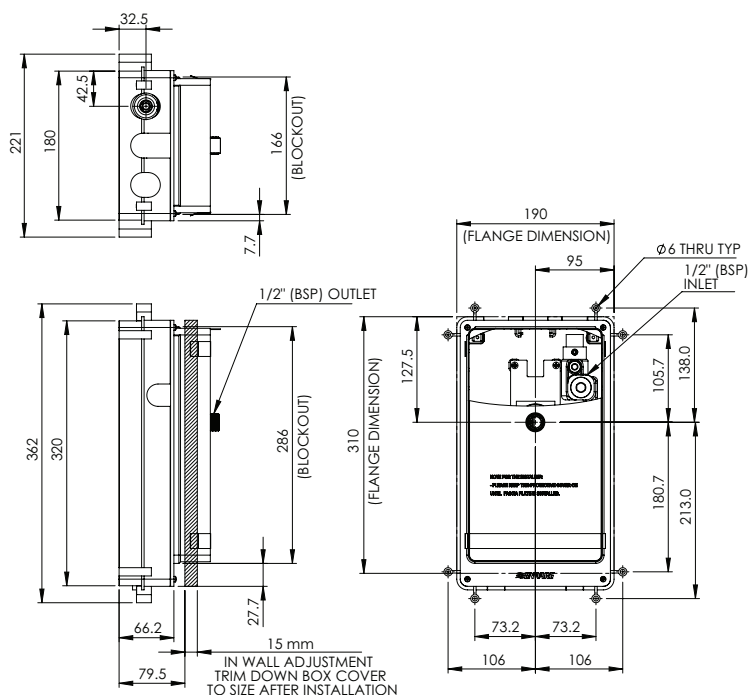
ENMAMC2L3	Auto Sense Mains 230mm Spout 8Lpm Laminar
ENMAMC2L5	Auto Sense Mains 230mm Spout 6Lpm Laminar
ENMWMC1L5	On Demand Sensor Mains 200mm Spout 6Lpm Laminar
ENMWMC2L5	On Demand Sensor Mains 230mm Spout 6Lpm Laminar

Version: Mar 22

Enware Touch-Free Wall Sensor Tap In-Wall Component - Mains

TECHNICAL INFORMATION

Inlet Pressures	Min 20kPa Max 500kPa
Static Inlet Pressure	1000kPa Max For testing purposes/ system commissioning
Maximum Water Temperature	70°C
Inlet Connection	15mm (1/2" BSP)



Enware products are to be installed in accordance with the Plumbing Code of Australia and AS/NZS3500. Reference should also be made to the Australasian Health facility Guidelines (AHFG), ABCB and Local Government regulations when considering the choice of, and the installation of these products.

Enware Australia advises:

1. Due to ongoing Research and Development, specifications may change without notice. 2. Component specifications may change on some export models. 3. Refer to warranty statement for warranty details - www.enware.com.au/warranty

Version: Mar 22