

Enware Touch Free Wall Sensor Tap - On Demand Sensor

Touch-free sensor tap with an above outlet sensor is designed for clinical hand to elbow washing for surgical scrub, and Type A and Type B wash stations.

ON DEMAND SENSOR ENM621

FEATURES

- AHFG Type A and B healthcare basin compatibility
- Optional 12-hour flush cycle eliminates stagnation in water supply lines greatly reducing the risk of bacteria growth
- Smart, durable easy-clean chrome surfaces
- Smooth bore tubular spout designed to minimise bacteria growth
- Potentially contaminated air is removed from the water stream with laminar flow controlled spout.
- IP67 rated connections
- Sealed face plate minimises egress of moisture into wall cavity and contaminated air flow from wall cavity into sterile areas
- Back and front of wall components offered may be ordered and supplied separately to meet construction needs
- Face plate can be removed to access integral isolation, check valves, strainers and inspection ports
- 12V mains power supply
- 5 Star 6 lpm (5.5 lpm nominal). Options of WELS 6 Star 4.73 lpm (4.0 lpm nominal) and 3 Star 8 lpm available



Product Codes: both **In Wall** and **Front of Wall** components must be ordered

IN WALL COMPONENT

ENM621 Mains Powered

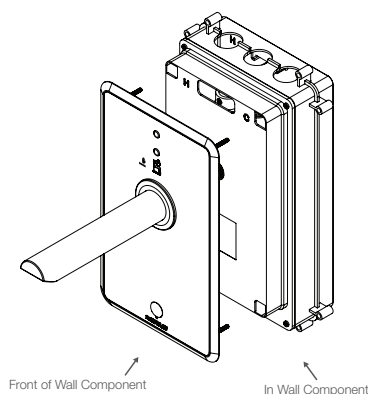
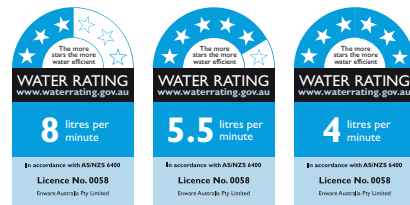
FRONT OF WALL COMPONENT

230mm Spout
ENMWM C2L5 6Lpm Laminar Flow **MAINS**

200mm Spout
ENMWM C1L5 6Lpm Laminar Flow **MAINS**

OPTIONS

- Auto Sense Touch Free Operation



Version: Jul 21

Call 1300 369 273
www.enware.com.au

Enware Australia Pty Limited
9 Endeavour Rd Caringbah NSW 2229 Australia
Ph: 02 8536 4000 info@enware.com.au



Enware Touch Free Wall Sensor Tap - On Demand Sensor

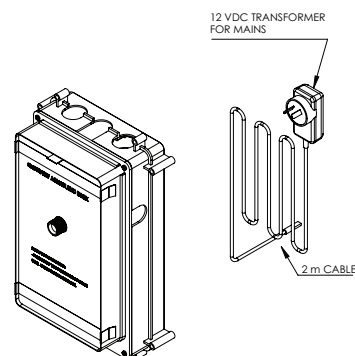
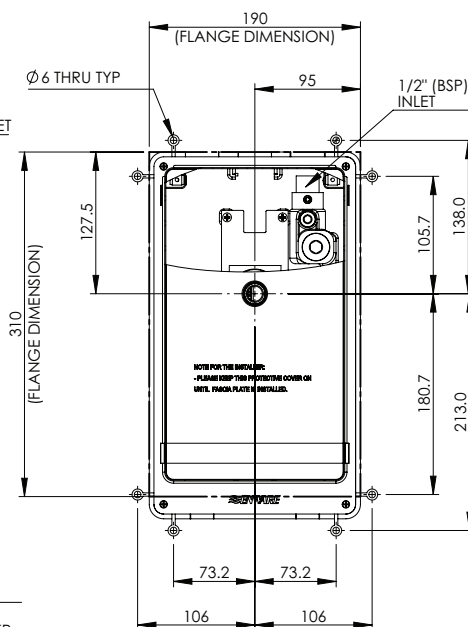
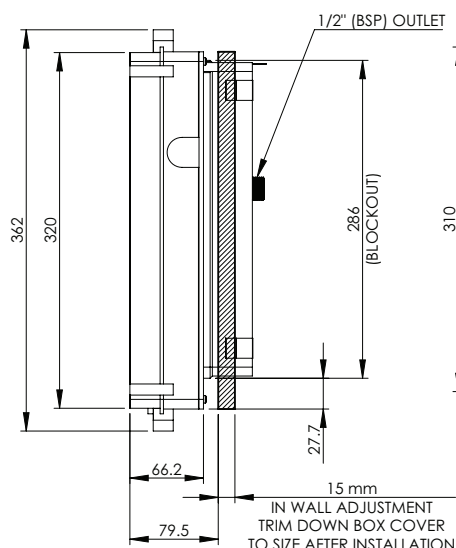
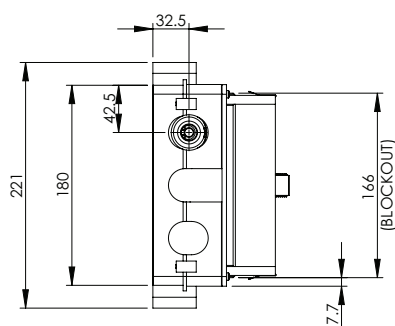
ON DEMAND SENSOR ENM621

Technical Information

Dynamic Inlet Pressures*	Min 20 kPa, Max 500 kPa
Static Inlet Pressures For testing purposes/system commissioning	Max. 1000kPa
Maximum Water Temperature	70°C
Sensor Range	20-100mm
Water Run Time (after hands removed from sensor range) ^ 8, 15, 30, 45, 60, 90, 120 or 180 seconds settings available	15 seconds (+/-1) default^

* In accordance with AS/NZS3500. Enware products are to be installed in accordance with the Plumbing Code of Australia (PCA) and AS/NZS3500. Installations not complying with PCA and AS/NZS 3500 may void the product and performance warranty provisions. NOTE: Enware Australia advises: 1. Due to ongoing Research and Development, specifications may change without notice. 2. Component specifications may change on some export models

IN-WALL COMPONENT



Call 1300 369 273
www.enware.com.au

Enware Australia Pty Limited
9 Endeavour Rd Caringbah NSW 2229 Australia
Ph: 02 8536 4000 info@enware.com.au



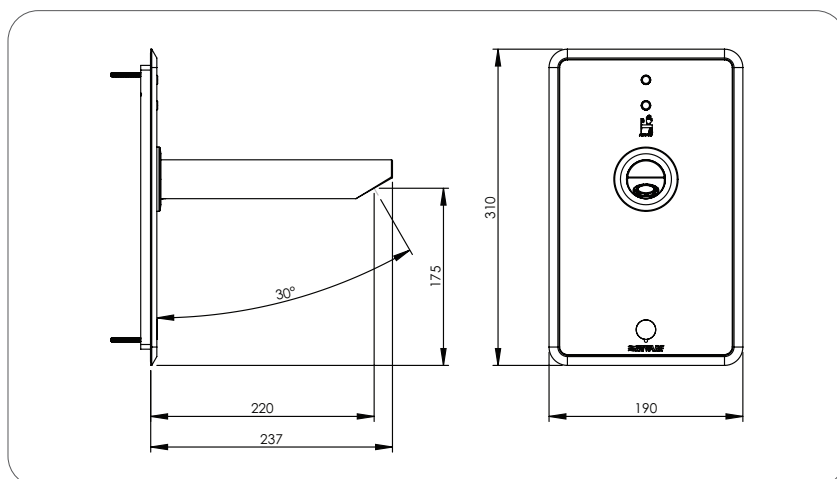
Enware Touch Free Sensor Tap - Wave On / Wave Off

ON DEMAND SENSOR ENM621

FRONT OF WALL COMPONENT - SPOUT OPTIONS

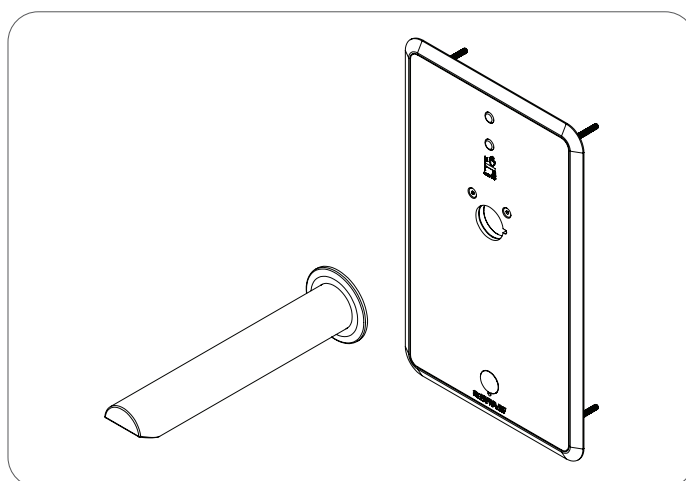
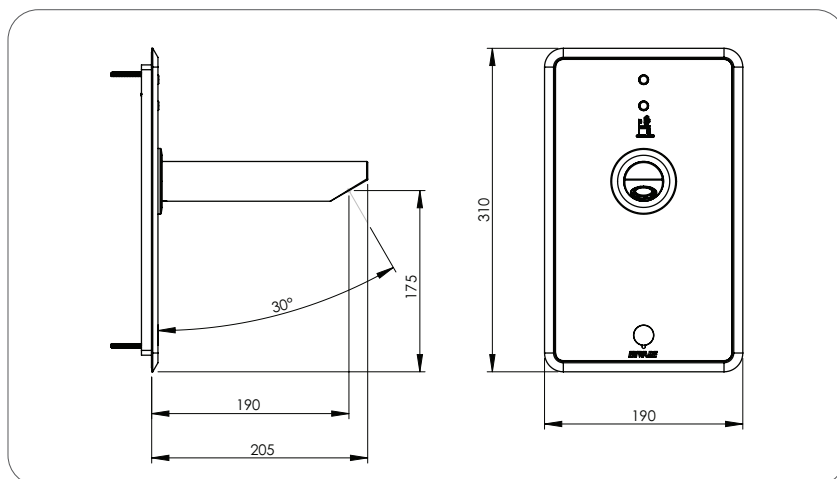
230mm Spout

ENMWM C2L5 6Lpm Laminar Flow MAINS



200mm Spout

ENMWM C1L5 6Lpm Laminar Flow MAINS



Call 1300 369 273
www.enware.com.au

Enware Australia Pty Limited
9 Endeavour Rd Caringbah NSW 2229 Australia
Ph: 02 8536 4000 info@enware.com.au

