

Enware Touch-Free Wall Sensor Tap In-Wall Component - Battery

ENM620

Touch-free sensor tap designed for general hand hygiene within health care and food preparation facilities.

KEY FEATURES

- In-Wall component for ENMA and ENMW series sensor tap
- Low voltage 6V battery operated
- IP67 rated connections
- Compatible with Smartflow Monitoring System for TMV monitoring and reporting
- Back and front of wall components offered may be ordered and supplied separately to meet construction needs
- Requires Front-of-Wall component



PRODUCT CODE

ENM620	Wall Sensor In Wall Component - Battery
--------	---

Options:

SFM-HE01	Single Probe Kit for Connection to Smartflow TMV Monitoring System
----------	--

Front of Wall Component Options:

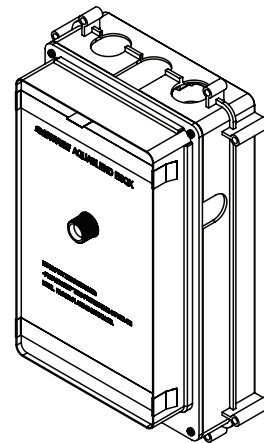
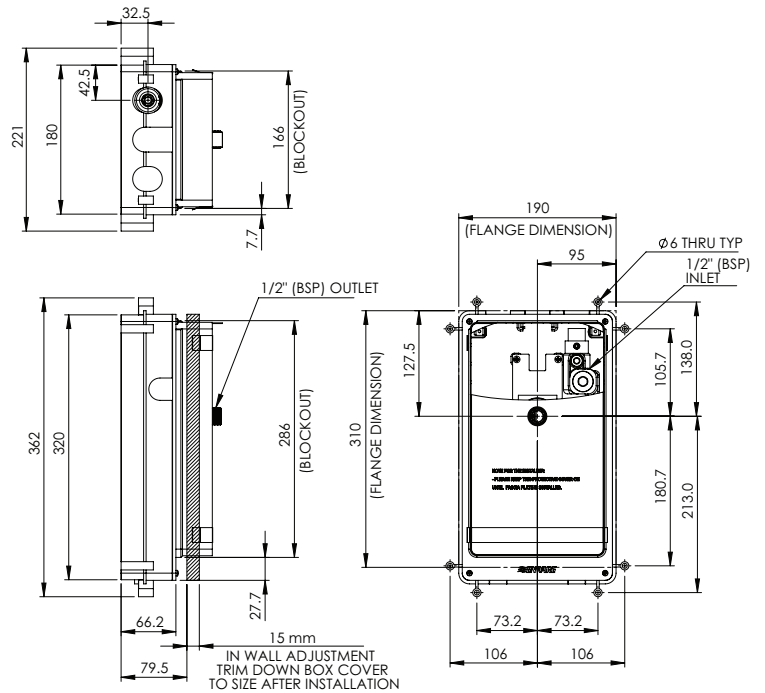
ENMABC1L5	Auto Sense Battery 200mm Spout 6Lpm Laminar
ENMABC2L5	Auto Sense Battery 230mm Spout 6Lpm Laminar
ENMWBC2L5	On Demand Sensor Battery 230mm Spout 6Lpm Laminar

Version: Mar 22

Enware Touch-Free Wall Sensor Tap In-Wall Component - Battery

TECHNICAL INFORMATION

Inlet Pressures	Min 20kPa Max 500kPa
Static Inlet Pressure	1000kPa Max For testing purposes/ system commissioning
Maximum Water Temperature	70°C
Inlet Connection	15mm (1/2" BSP)



Enware products are to be installed in accordance with the Plumbing Code of Australia and AS/NZS3500. Reference should also be made to the Australasian Health facility Guidelines (AHFG), ABCB and Local Government regulations when considering the choice of, and the installation of these products.

Enware Australia advises:

1. Due to ongoing Research and Development, specifications may change without notice. 2. Component specifications may change on some export models. 3. Refer to warranty statement for warranty details - www.enware.com.au/warranty

Version: Mar 22