

Enware Lutana Basin 770 Right Hand Bowl

ELB7762

Nordic design wash basin featuring half-moon shape wash bowl and integrated shelf, raised rear edge and smooth rounded corner on bowl side.

Ideal for residential aged care, health, independent living units, education, commercial and public places.

FEATURES

- 770mm vitreous china basin with generous integrated shelf
- White glazed top and bottom for infection control
- Half-moon shaped wash bowl for increased user area
- Raised rear edge to prevent water harboring
- Smooth rounded wash bowl corner for improved risk prevention
- Balanced tap and soap recessed platform for easy cleaning and drainage
- Designed for adaptable or fixed vanity options
- Can be installed to comply with AS1428.1 requirements - including shelf
- Bolt or cabinet mounted (fixing bolts included)
- Available with or without overflow
- 1, 3 or no taphole options
- Supplied with lag bolts and standard plug and waste
- Basin Volume: 3L to overflow; 7L without overflow
- Basin Weight: 20kg
- Suitable for AusHFG Accessible Ensuite

* Basin not suitable for installation against a side wall



Tapware not included. Photos are shown for illustration purpose only. Actual product may vary due to ongoing product development. Tapware and basin combinations shown are not compliant to AS1428.1.

OPTIONS

Standard P-Trap 40mm white

Microtrap Chrome Plated Plastic Finish with Pop-Up

Bottle Trap adjustable chrome plated plastic finish

Pop-Up Plug and Waste

Shroud - Vitreous China Accessible Shroud

Left Bowl

KOL15600

IFO15917

KOL17013

KOL32400

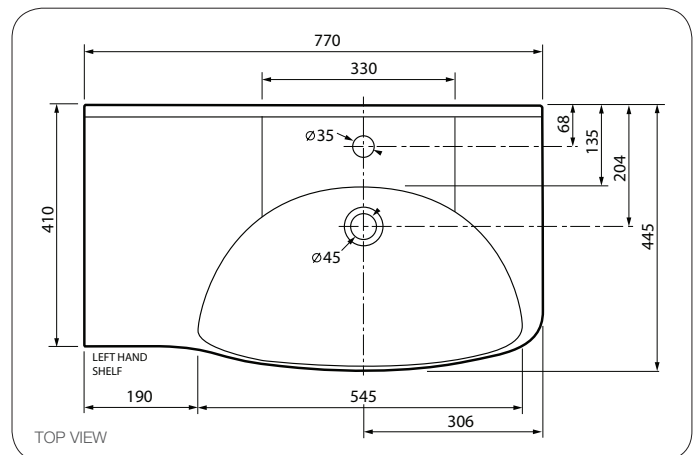
ELB4400

ELB7752

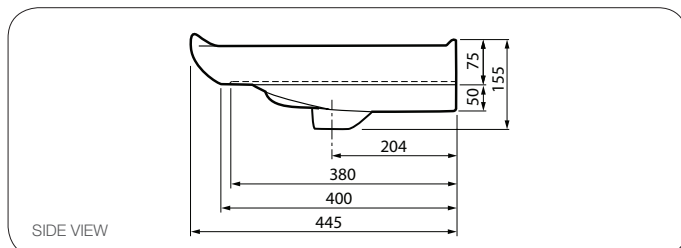
Product Codes

*special production terms will apply

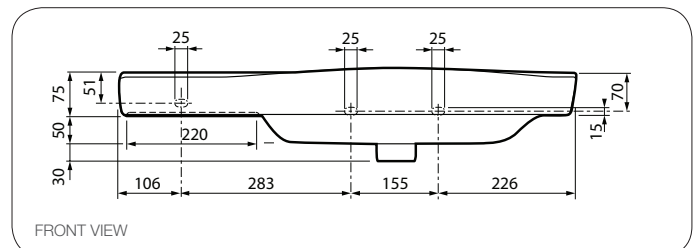
- | | |
|----------------------|------------------------------------|
| ELB7762 | Right Bowl 1x Taphole 1x Overflow |
| ELB7760-100 | Right Bowl No Taphole No Overflow |
| ELB7762-100 | Right Bowl 1x Taphole No Overflow |
| ELB776222 | Right Bowl 3x Taphole 1x Overflow* |
| ELB776222-100 | Right Bowl 3x Taphole No Overflow* |



TOP VIEW



SIDE VIEW



FRONT VIEW

100298_May 20

Version: May 20

Call 1300 369 273

www.enware.com.au

Enware Australia Pty Limited
9 Endeavour Rd Caringbah NSW 2229 Australia
Ph: 02 8536 4000 info@enware.com.au



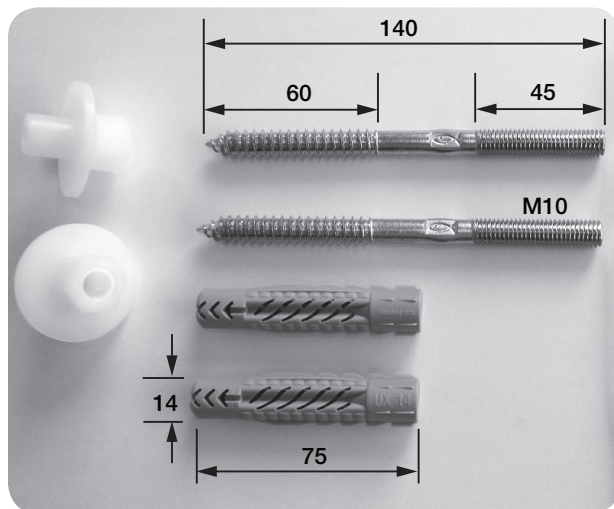
Enware Lutana Basin 770 Right Hand Bowl

ELB7762

COMPONENTS INCLUDED

- Basin
- Fixing Kit (IFO707)
- Plug and Waste (IFO14934)

IFO707 FIXING KIT / RAG BOLTS

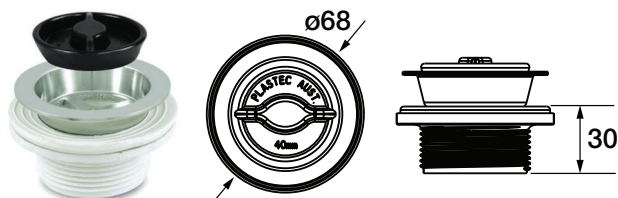


Timber pilot hole drill size: 8mm Ø (7-9mm depending on hardness of timber), depth 75-95mm. Use stud-screw straight into timber.

Masonry drill hole size: 14mm Ø, depth 80-95mm. Use expansion plugs.

Use a spanner on the flat section of the stud-screw.

IFO14934 PLUG AND WASTE



NOTE:

All dimensions are in millimetres, subject to standard manufacturing variations.

Specifications may vary without notice as part of our continuous improvement practices.

STANDARD P-TRAP SET OUT

Standard P-Trap (Optional)

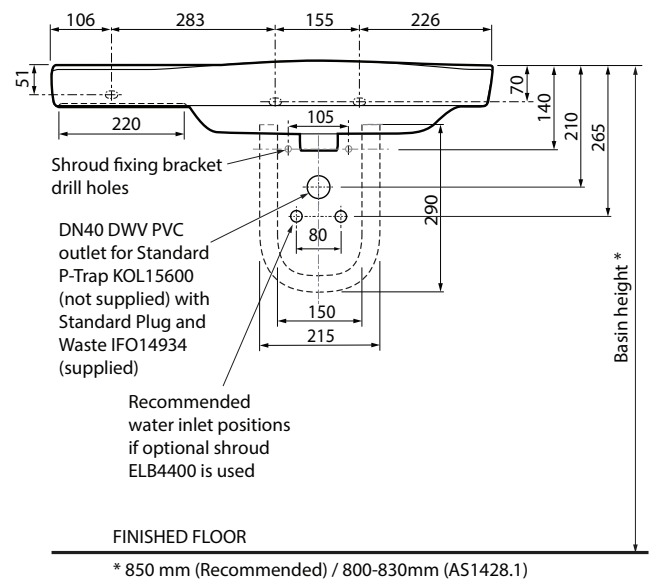
Code: KOL15600

Standard Plug and Waste (supplied)

Code: IFO14934

Shroud (Optional)

Code: ELB4400



Call 1300 369 273

www.enware.com.au

Enware Australia Pty Limited
9 Endeavour Rd Caringbah NSW 2229 Australia
Ph: 02 8536 4000 info@enware.com.au



Version: May 20

Enware Lutana Basin 770 Right Hand Bowl

ELB7762

MICROTRAP SET OUT

Microtrap Chrome

With Plug & Grate
(Optional)

Code: IFO15916

With Pop Up (Optional)

Code: IFO15917

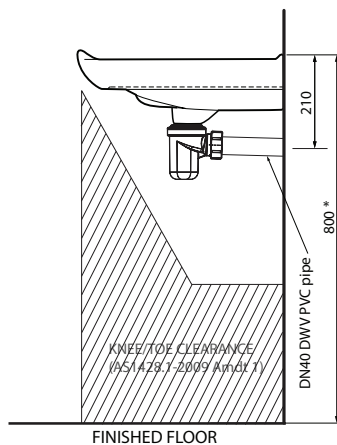


MICROTRAP SETOUT

Microtrap Chrome

With plug & grate - IFO15916 (not supplied - optional)

With pop up - IFO15917 (not supplied - optional)



* Minimum height to comply with AS1428.1, maximum 830mm.
Recommended height 850mm

BOTTLE TRAP SET OUT

Bottle Trap Chrome
Adjustable
(Optional)

Code: KOL17013

Standard Plug
& Waste (supplied)

Code: IFO14934



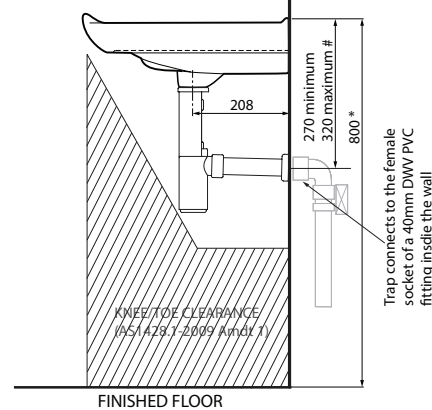
BOTTLE TRAP SETOUT

Bottle Trap Chrome Adjustable

- code KOL17013 (not supplied)

Standard Plug and Waste

- code IFO14934 (supplied)

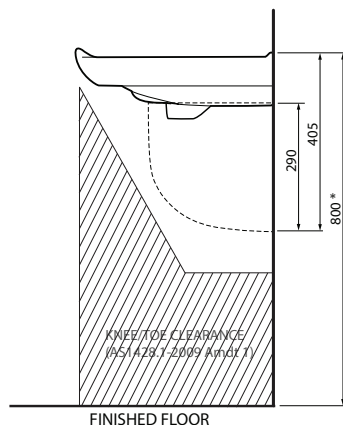


To comply with AS1428.1

* Minimum height to comply with AS1428.1, maximum 830mm.
Recommended height 850mm

BASIN WITH SHROUD (ELB4400)

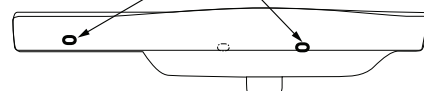
Lutana Shroud (ELB4400) meets the clearance
requirements of AS1428.1-2009 Amdt 1



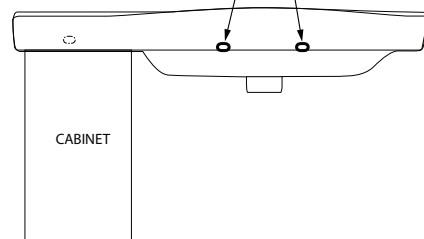
* Minimum height to comply with AS1428.1, maximum 830mm.
Recommended height 850mm

BOLT FIXING

Use outer bolt holes to
mount basin on wall



Use inner basin wing holes to mount basin on wall when
a cabinet is used to support the basin on the shelf side



Version: May 20

Call 1300 369 273

www.enware.com.au

Enware Australia Pty Limited
9 Endeavour Rd Caringbah NSW 2229 Australia
Ph: 02 8536 4000 info@enware.com.au



Enware Lutana Basin 770 Right Hand Bowl

ELB7762

COMPATIBLE TAPWARE - AusHFG

Compatible Tapware with Lutana 770 Basin according to the requirements of Australasian Health Facility Guidelines: Water flow not running directly into drain aperture.

Description	Product Code	Aerated				Laminar			
		4LPM	5LPM	6LPM	8LPM	4LPM	5LPM	6LPM	8LPM
Oras Cubista Basin Mixer - Extended Spout	SLM807, SLM807D	●	●	●	●	●	●	●	●
Oras Vega Sensor Basin Tap	ENM6222 / 6250	✕	●	●	●	✕	✕	✕	●
Oras Electra Goose Neck Sensor Tap - 170mm Reach	ENM6320 / 6350 / 6323 / 6353							●	
Wellbeing Basin Set with 165mm Spout	WBBCD65-165					●		●	
Wellbeing Basin Mixer - Sequential / Dual Mixer	WBBSQ65-165 / WBDMCD65-165					●		●	
Lever Action Basin Set with 155mm Spout	VPLBCD60-155		●	●	●		●	●*	●
Lever Action Dual Mixer Basin Set with 155mm Spout	VPLMCD60-155		●	●*	●		●	●*	●
Hob Basin Spout 150mm	SPC005		●		●		●		●
Aquablend SQX Basin Mixer	ATM606, ATM606D					●	●*	●*	●
ESQX - Electronic Thermostatic Wall Mixer with 230mm Spout	ATAMC2L#, ATABC2L#, SQ102L#					●*	●	●	●
ESQX - Electronic Thermostatic Wall Mixer with 200mm Spout	ATAMC1L#, ATABC1L#, SQ101L#					●	●	●*	●*

●Compatible ✕Not compatible ●*Recommended

INSTALLATION

1. Ensure there is adequate wall structure and suitable reinforcement behind finished wall for basin fixings at the required height position.
2. Prepare water and waste outlet points according to the plumbing setouts (refer to Setout diagrams).
3. Position basin at the required position, level, and mark anchor holes. (Use two bolts as required - refer to Bolt Fixing diagram)
4. Pre-drill anchor holes where marked, and install fixing bolts. (Refer to IFO707 diagram)
5. Mount basin on wall and level. Secure basin onto wall using flanged nylon nut. Do not overtighten.
6. Install tap and/or waste assembly, and connect plumbing.
7. Seal all basin mounting contact surfaces with high grade anti-bacterial silicone of appropriate colour. Do not use epoxy type adhesives.

CLEANING

Enware Product should be cleaned with a soft damp cloth using only mild liquid detergent or soap and water. Do not use cleaning agents containing a corrosive acid, scouring agent or solvent chemicals. Do not use cream cleaners, as they are abrasive. Use of unsuitable cleaning agents may damage the surface. Any damage caused in this way will not be covered by warranty.

WARRANTY

10 Year Conditional Warranty*: 1 Year parts and replacement labour from the date of purchase on the complete assembly;

*After 1 Year a further 9 years parts only warranty applies against material and manufacturing defects. For more information, refer to www.enware.com.au/warranty.

Version: May 20

Call 1300 369 273
www.enware.com.au

Enware Australia Pty Limited
9 Endeavour Rd Caringbah NSW 2229 Australia
Ph: 02 8536 4000 info@enware.com.au

