

ENWARE WALL FACED RIMLESS CLOSE-COUPLED TOILET SUITE - RAISED

Installation Instructions

EBTW610R

Raised Height



EBTW610



I00219_FEB 23

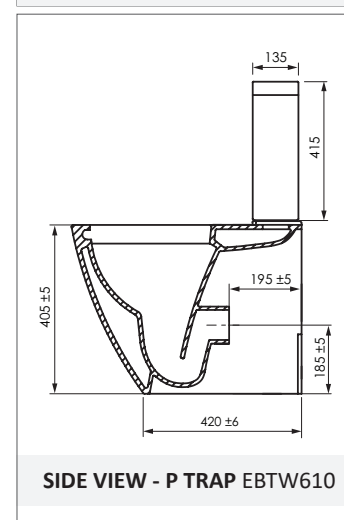
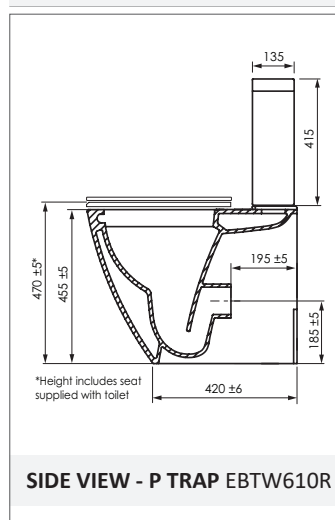
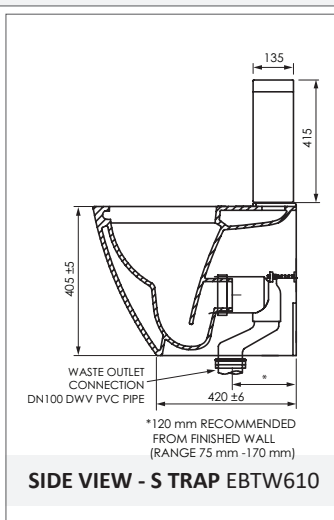
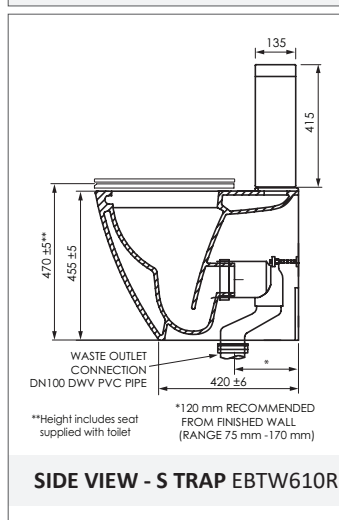
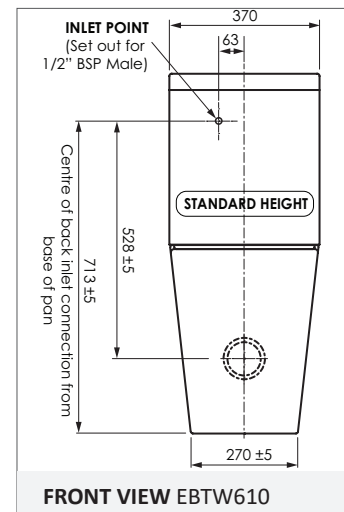
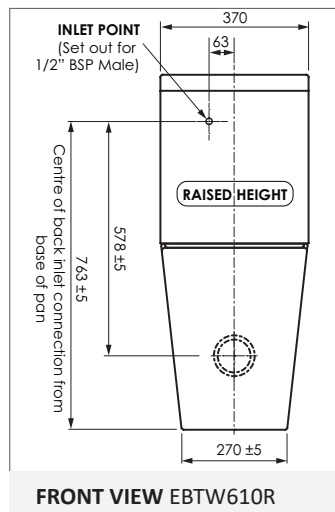
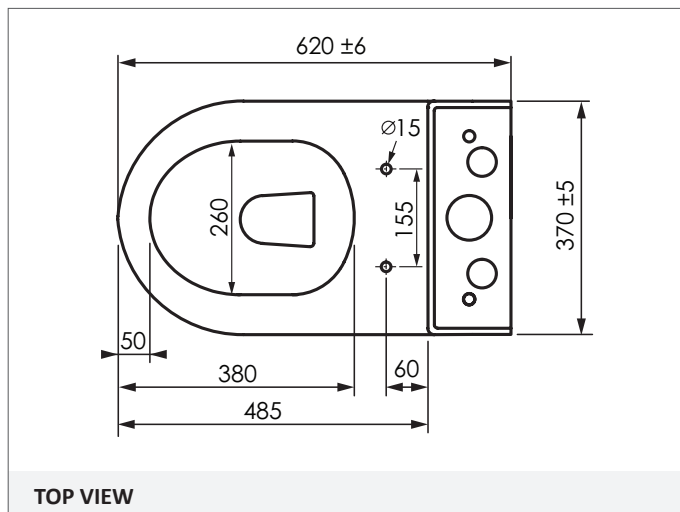
Call 1300 369 273
www.enware.com.au

Enware Australia
9 Endeavour Rd Caringbah NSW 2229 Australia
Ph: +61 2 8556 4000 info@enware.com.au

 **ENWARE**

dimensions

not to scale



technical data

Water Supply Inlet Pressure	Min. 50 kPa - Max. 500 kPa *
Inlet Connection	1/2" BSP (DN15)
Water Inlet Connection Method	Back Inlet
Outlet Connection	DN100 DWV PVC (S-Trap Adaptor) / DN100 DWV PVC Pan Collar (P-Trap)

Installation shall be in accordance with the AS/NZS3500 series of Standards.

*Enware products are to be installed in accordance with the Plumbing Code of Australia (PCA), AS/NZS3500 and the manufacturer's instructions. Installations not complying with PCA, AS/NZS 3500 or the manufacturer's instructions may void the product and performance warranty provisions.



installation instructions

PLEASE READ CAREFULLY BEFORE INSTALLATION

SETTING OUT AND ROUGHING IN

EBTW610R WC pan offers the option to use S or P trap connection as detailed below

S-Trap Set-Out:

The recommended set-out for S-Trap installation is 120mm from the finished wall, with adjustability range from minimum 75mm – maximum 170mm from finished wall.

The outlet pipe should be DN100 PVC DWV pipe. The S-Trap Adaptor has a rubber seal that inserts inside the DN100mm pipe.

P-Trap Set-Out:

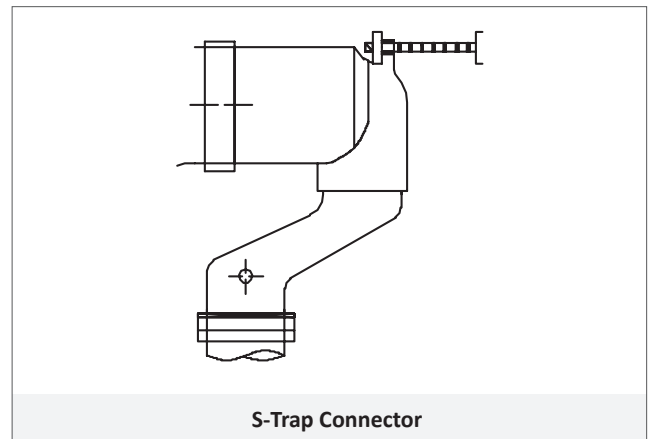
P-Trap spigot is 185 +/- 5 mm from base of pan. Connection to be used during fit out of the pan is a 100mm DWV Pan Collar.

Water Inlet Point

Set a 1/2" BSP (DN15) water inlet point on wall, at height 763 +/- 5mm from the base of pan for Raised Height EBTW610R (713 +/- 5mm for Standard Height EBTW610) and offset 63mm to the left from centre.

S-TRAP CONNECTOR FIXING PROCEDURE

1. Determine the height of pan outlet and cut the bottom section of S-trap connector to match the height of the pan outlet.
2. Determine the set-out of pan from finished wall. (Range of 75mm – 170mm from finished wall.) Cut the collar section of the connector if necessary, to suit the set out.
3. Cut fixing rod to length, attach rod to fixing plate and S-trap connector. Secure to wall.



P-TRAP CONNECTION

Install a Pan Collar onto outlet pipe on wall. Pan outlet is approximately 195mm +/- 5mm from finished wall surface, at height approximately 185mm +/- 5mm from base of pan.

FIXING CISTERN ONTO PAN

Install cistern onto pan with two bolts and nuts supplied. Ensure black cistern seal is in place between the pan and cistern outlet. Hand tighten wing nuts until cistern feels secure. Do not overtighten.

FIXING PAN ONTO FLOOR

Pan can be fixed onto floor with cement bedding, or silicone with bracket-and-screw fixing.

Fixing brackets, screws, and chrome screw caps are supplied with the product.

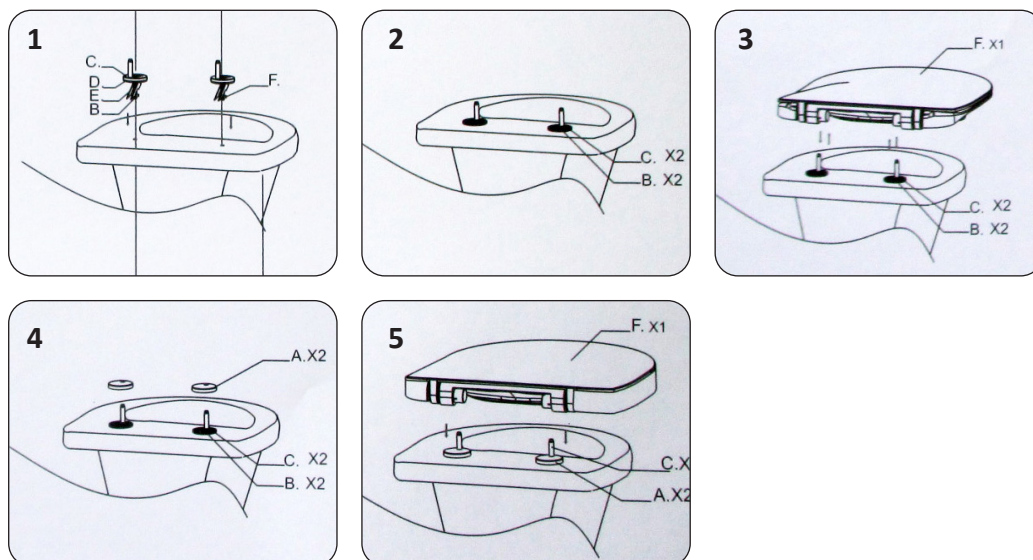
The position of the bracket is to be 115mm approx. from the wall, in line with the corresponding holes provided on the pan. Brackets may need to be trimmed to suit position of drain pipe.

CONNECTING TO WATER SUPPLY

1. Flush the water supply line, and install mini cistern cock onto 1/2" BSP thread on wall.
2. Connect water inlet valve to mini cistern cock.
3. Turn water on and test connections.
4. Test the flushing mechanism for leaks and for correct operation.

INSTALL TOILET SEAT

1. Assemble seat hinge fixing.
2. Apply anti-seize or lubricant oil to toggle and screw before installing.
3. Insert toggle through the pan hole. Ensure the toggle is located centrally in the hole.
4. Tighten up the screw loosely. Fit the toilet seat onto the hinge fixing by pushing down, and adjust position of seat and hinge fixing. Take off the seat by pulling up, and tighten screws firmly at the correct position.
5. Fit metal covers onto the hinge fixing, before fitting the seat back on.



spare parts

EBTWS152	Soft Close Seat
EBTWS100	Hinge fixing kit for Soft Close Seat
EBTWS028	Cistern inlet valve complete
EBTWS360	Cistern inlet valve lever and diaphragm
EBTWS240	Cistern outlet valve complete
EBTWS275	Dual flush Button kit
EBTWS276	Flush button actuator rod set 170.351.00.1
EBTWS112	Cistern outlet valve mechanism with seal
EBTWS418	Cistern outlet valve seal only 63x32
EBTWS452	Pan only
EBTWS151	Cistern Complete
EBTWS001	Floor fixing screw kit
EBTWS105	Trap Converter
EBTWS102	Cistern Pan fixing screws x 2
EBTWS011	Cistern inlet valve hole seal
EBTWS114	Cistern to Pan Seal

ADDRESS: 9 Endeavour Rd Caringbah NSW 2229 Australia

POSTAL ADDRESS: P.O. Box 2545, Taren Point NSW 2229 Australia

PHONE: +61 2 8556 4000

1300 369 273 [AUS] WWW.ENWARE.COM.AU INFO@ENWARE.COM.AU

