

The Custodian® Extended Duct Mount Basin Outlet

CNBSN-SD

Providing Safety and Security With
Enhanced Comfort and Care

The Custodian® Basin Outlet is designed to
provide the user superior comfort.

The design is both Anti-Ligature and high
security.

KEY FEATURES

- Designed to exceed anti-ligature requirements of TS001-2013
- WELS: 3 Star rating (8 L/min) supplied standard. 5 L/min available on request - specify when ordering
- Extended tail for duct mounting
- Anti-rotation pin



PRODUCT CODES

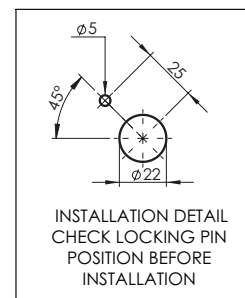
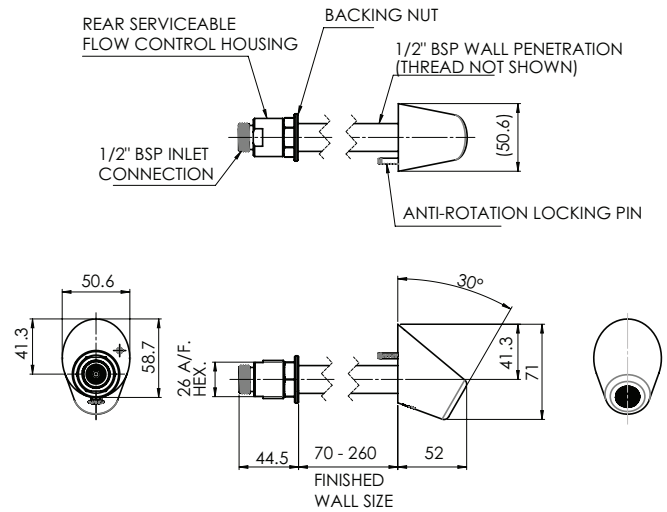
CNBSN-SD	Custodian Extended Duct Mount Basin Outlet
----------	--------------------------------------------

Version 2.0__06Jul22

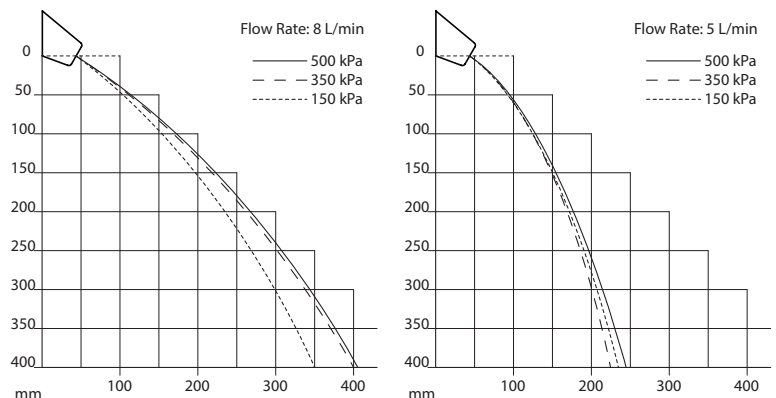
The Custodian® Extended Duct Mount Basin Outlet

TECHNICAL INFORMATION

Inlet Connection	1/2" BSP Female (15mm)
Operating Working Pressure	50 - 500 kPa
Flow Rate	8 L/min (WELS 3 Star) 5 L/min
Maximum Water Temperature	70°C



Water Flow Projection



Enware products are to be installed in accordance with the Plumbing Code of Australia and AS/NZS3500. Reference should also be made to the Australasian Health facility Guidelines (AHFG), ABCB and Local Government regulations when considering the choice of, and the installation of these products.

Enware Australia advises:

1. Due to ongoing Research and Development, specifications may change without notice.
2. Component specifications may change on some export models.
3. Refer to warranty statement for warranty details - www.enware.com.au/warranty

Version 2.0__06Jul22