

Aquablend® eSQX™ Touch Free - On Demand Sensor Point of Use Thermostatic Wall Mixer - Front of Wall Component

ATWMC2

Aquablend® eSQX™ is Australia's first and most technically advanced touch-free thermostatic mixer solution. Designed to deliver touch-free pre-mixed warm water for enhanced infection control and cross-contamination prevention. The solution includes an infra-red sensor located above the outlet, designed for clinical hand to elbow washing for surgical scrub, and Type A and Type B wash stations.

KEY FEATURES

- On Demand Sensor - place hand in front of sensor to turn on, valve stays open without hand remaining in the sensor range. Place hand in front of sensor again to turn off
- Low voltage 12V mains power supply
- 230mm spout
- Flush cycle stagnation management to reduce risk of bacterial growth, usage monitoring and other function settings are adjustable via Oras App and Bluetooth connectivity
- Effective reduction of Legionella risk
- AHFG Type A and B healthcare basin compatibility
- Compatible with Smartflow Monitoring System for TMV monitoring and reporting
- Smart, durable easy-clean chrome surfaces
- Smooth bore tubular spout designed to minimise bacteria growth
- IP67 rated connections
- Faceplate can be removed to access integral isolation/check valves, strainers and inspection ports
- Watermark Certified to AS4032.4
- Requires In-Wall Component ATM621 or ATM621SF



PRODUCT CODES

ATWMC2L5	eSQX Front of Wall Component On Demand Sensor - 12V Mains - 230mm Spout 6Lpm Laminar Flow
ATWMC2L6	eSQX Front of Wall Component On Demand Sensor - 12V Mains - 230mm Spout 4.73Lpm Laminar Flow

Order with: (Select one In-Wall Component)

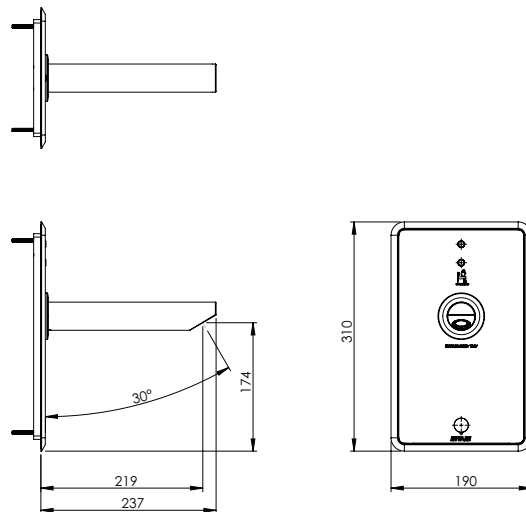
ATM621	eSQX In Wall Component - 12V Mains
ATM621SF	eSQX In Wall Component - 12V Mains - with Single Probe Kit for Connection to Smartflow TMV Monitoring System

Version 1.1__05Oct22

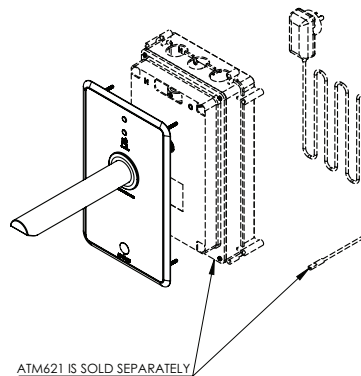
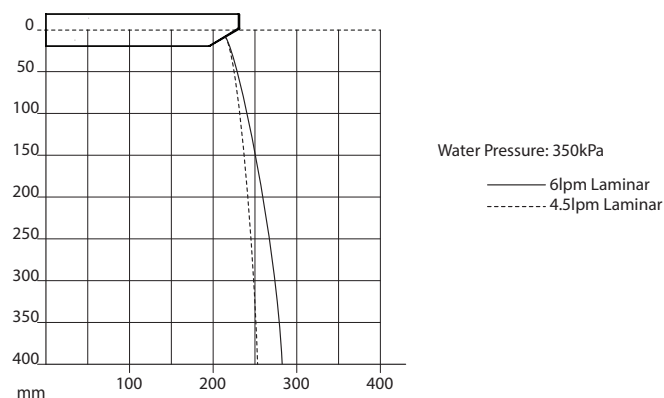
Aquablend® eSQX™ Touch Free - On Demand Sensor Point of Use Thermostatic Wall Mixer - Front of Wall Component

TECHNICAL INFORMATION

Sensor Range	20-100mm (Factory default setting - adjustable)
Water Run Time	15 secs (+/-1) after activation (Factory default setting - adjustable)
Sensor Power Supply	12VDC



Water Flow Projection



Enware products are to be installed in accordance with the Plumbing Code of Australia and AS/NZS3500. Reference should also be made to the Australasian Health facility Guidelines (AHFG), ABCB and Local Government regulations when considering the choice of, and the installation of these products.

Enware Australia advises:

1. Due to ongoing Research and Development, specifications may change without notice.
2. Component specifications may change on some export models.
3. Refer to warranty statement for warranty details - www.enware.com.au/warranty

Version 1.1__05Oct22