

Aquablend® Health Point of Use TMV with Four Way Mixer - Front of Wall Component - Wellbeing Handle

ATMHE-WB65SQ-FOW

The New Aquablend® Health TMV delivers an all new approach to hygiene, safety and convenience for Health Care and Aged Care Ensuites.

The Aquablend® Health TMV is a point of use (POU) thermostatic mixing valve coupled with a unique 4 way mixer allowing the user to easily and safely mix water for showering at the desired temperature from Cold through to Full Warm. Simultaneously, pre-mixed warm and/or cold water can be delivered to adjacent fixtures.

The benefit of this design is by increasing the flow through the Thermostatic Mixer, it comes up to full operating temperature and maximum flow more regularly, thereby helping to reduce the risk of legionella and other waterborne bacteria developing.



KEY FEATURES

- Front-of-Wall component for Aquablend Health Point-of-Use TMV with 4 way mixer
- Wellbeing 65mm lever handle
- Sequential Ceramic Disc Mixing Cartridge ensures ultimate control with cold start up and stop
- Point-of-Use TMV coupled with a unique 4 way mixer - supplies mixed and/or cold water to additional fixtures - ideal for Ensuites
- Attractive, chrome wall plate and 65mm Wellbeing handle ensures ease of use and cleaning
- Faceplate can be removed for easy access to TMV and mixer components for servicing
- Matches with the Enware Wellbeing range
- Requires Back-of-Wall component

PRODUCT CODES

ATMHE-WB65SQ-FOW	Aquablend Health Point of Use TMV with Four Way Mixer - Front of Wall Component with Wellbeing 65mm Lever Handle
------------------	--

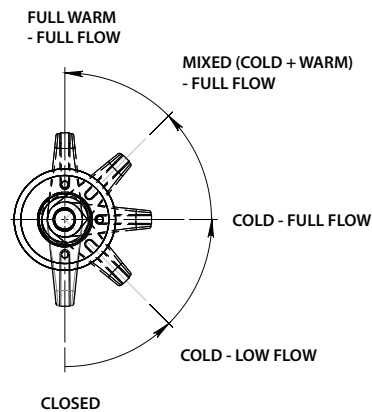
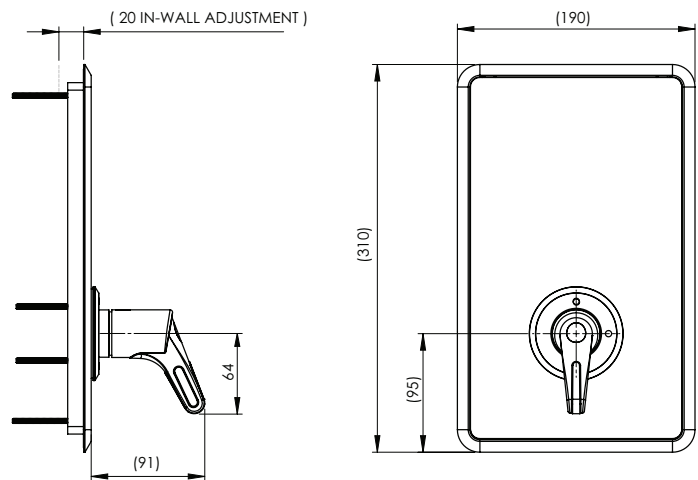
Order with: (Select one Back-of-Wall Component)

ATMHE608-BOW	Aquablend Health Point of Use TMV with Four Way Mixer - Back of Wall Component
ATMHE608SF-BOW	Aquablend Health Point of Use TMV with Four Way Mixer - Back of Wall Component - with Single Probe Kit for Connection to Smartflow TMV Monitoring System

Version 1.1__05Oct22

Aquablend® Health Point of Use TMV with Four Way Mixer - Front of Wall Component - Wellbeing Handle

TECHNICAL INFORMATION



Shower Sequential Lever Handle Positions



Low Lead (0.25% actual) Content Brass is used for the Health TMV and 4 way mixer.

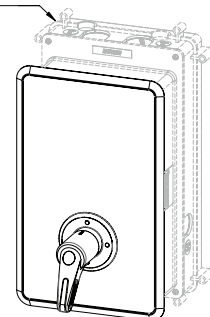
Watermark Certification for AS4032 applies to TMV component of Back-of-Wall component for this product. Watermark Certification for AS3718 applies to Mixer component of Back-of-Wall component for this product.

Enware products are to be installed in accordance with the Plumbing Code of Australia and AS/NZS3500. Reference should also be made to the Australasian Health facility Guidelines (AHFG), ABCB and Local Government regulations when considering the choice of, and the installation of these products.

Enware Australia advises:

1. Due to ongoing Research and Development, specifications may change without notice. 2. Component specifications may change on some export models. 3. Refer to warranty statement for warranty details - www.enware.com.au/warranty

BACK OF WALL COMPONENT
ATMHE608-BOW SOLD SEPARATELY



Version 1.1__05Oct22