

# Aquablend® SQX® Surgeon Mixer - Removable Spout

## ATM610X

Aquablend® SQX® delivers the world's highest standard of performance and quality, Certified to AS/NZS 4032.4– 2005 providing Australia's market leading compliant solution to meet the demands of AS/NZS 3500 for heated water temperature control. Thermostatic mixing at the point of use can provide reduced risk of legionella and other water-borne bacteria, improving water system health.

Designed for easy installation and efficient maintenance the range also has outstanding user benefits, providing comfort and control, scald protection and both water and energy efficiencies beyond those of traditional tapware.

Designed ergonomically for people with disabilities and for surgical and clinical hand washing the SQX range is ideal for any Hospital, Care or Commercial installation.



ATM610X with 120mm spout. Spout sold separately.

### KEY FEATURES

- Compliant to AS4032.4 and NSW Health Approved
- Point of use Thermostatic with sequential operation for energy efficient flow and temperature control
- Fixed / swivel spout
- Self draining tubular spout with smooth internal bore supplied separately, with a choice of 60mm or 120mm spout
- Pressure compensating laminar flow aerator with flow rates of 6 or 3.8 L/min
- Longer lever, designed for elbow control in health applications or for easier use in accessible applications
- Cool to touch and non-conductive mixer body
- Colour indication on handle for easy identification
- Easy to clean design
- Serviceable in-situ
- Australian designed and manufactured

### PRODUCT CODES

|         |                              |
|---------|------------------------------|
| ATM610X | SQX Surgeon Mixer - No Spout |
|---------|------------------------------|

### SPOUT OPTIONS

|            |                                     |
|------------|-------------------------------------|
| SQ060SD-L5 | 60mm Spout 5 lpm - Self Draining    |
| SQ060SD-L6 | 60mm Spout 3.8 lpm - Self Draining  |
| SQ120SD-L5 | 120mm Spout 5 lpm - Self Draining   |
| SQ120SD-L6 | 120mm Spout 3.8 lpm - Self Draining |



ATM610X with 60mm spout. Spout sold separately.

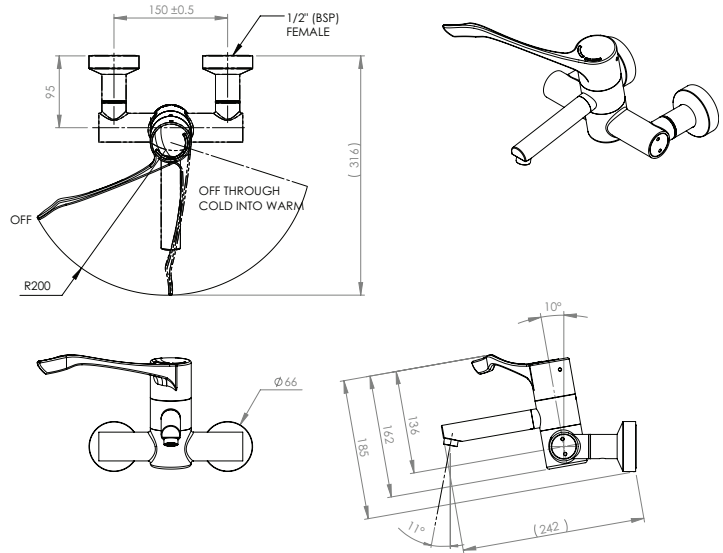
Version 1.1\_\_04Oct22

# Aquablend® SQX® Surgeon Mixer - Removable Spout

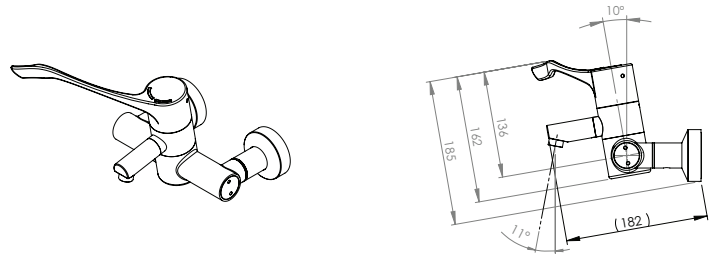
## TECHNICAL INFORMATION

|                              |   |
|------------------------------|---|
| Hot Inlet Temperature Range  | Min 55°C Max 85°C   |
| Cold Inlet Temperature Range | Min 5°C Max 25°C  |
| Adjustable Temperature Range | Cold to 46°C  |
| Operating Working Pressure   | 20 - 500 kPa  |
| Dynamic Inlet Pressures      | Min 20kPa Max 500kPa<br><br>For optimum operation it is recommended that the hot and cold water supply pressures be balanced within +/- 10% |
| Inlet Connection             | 15mm (1/2" BSP)   |

ATM610X with SQ120 Spout



ATM610X with SQ060 Spout



Enware products are to be installed in accordance with the Plumbing Code of Australia and AS/NZS3500. Reference should also be made to the Australasian Health facility Guidelines (AHFG), ABCB and Local Government regulations when considering the choice of, and the installation of these products.

Enware Australia advises:

1. Due to ongoing Research and Development, specifications may change without notice.
2. Component specifications may change on some export models.
3. Refer to warranty statement for warranty details - [www.enware.com.au/warranty](http://www.enware.com.au/warranty)

Version 1.1\_\_04Oct22

