

# Aquablend™ SQX™ Shower Mixer 100mm Lever Handle

Aquablend™ SQX™ is a high performance mixing valve. Combining thermostatic mixing valve and sequential mixing technology, this is the first Watermark Certified point-of-use thermostatic mixer in Australia.

The range delivers the most advanced choice for safe warm water delivery in high risk applications such as hospitals and aged care facilities. Offering anti-scald protection as well as reduced risk of Legionella.

NSW Health-approved for use in healthcare in NSW, suitable for all health and general applications.

## FEATURES

- Provides personal 'Point-of-Use' temperature control
- Compliant to AS4032.4
- Sequential operation for energy efficient flow and temperature control
- Thermal flush function to control Legionella and bacterial growth
- Serviceable in-situ with integral isolating ball valves and strainers
- In-wall mounting box for easy installation and maintenance
- Flush mounted chrome plated brass wall plate, and surround with wall seal
- Colour indication on handle for easy identification
- Australian designed and manufactured
- Easy to clean design
- User friendly, ergonomically designed mid length (100mm) handle

## ATM6082L

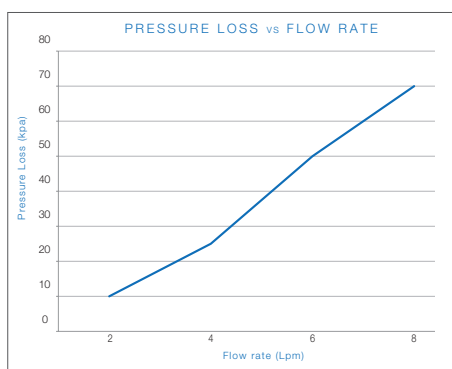


## Product Codes

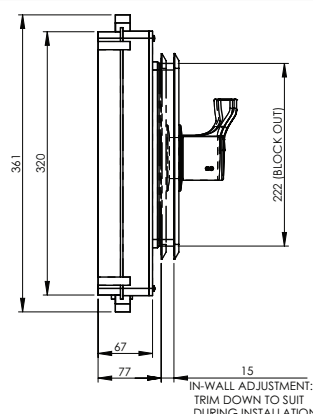
**ATM6082L** Aquablend™ SQX™ Shower Mixer

## Technical Information

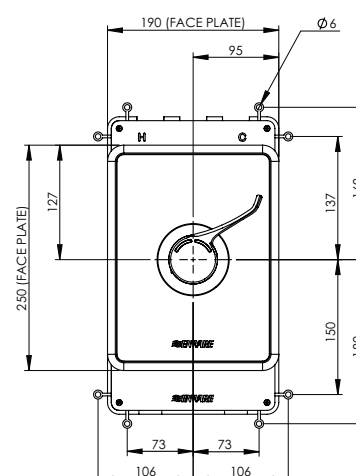
Hot Inlet Temperature Range	55°C - 85°C
Cold Inlet Temperature Range	5°C - 25°C
Adjustable Temperature Range	Full Cold - 46°C
Operating Working Pressure	20 - 500 * kPa
Dynamic Inlet Pressures	Min 20kPa Max 500kPa For optimum operation it is recommended that the hot and cold water supply pressures be balanced within +/- 10%



\*Enware tapware must be installed in accordance with the provisions of AS/NZS 3500. Installations not complying with AS/NZS 3500 may void the product and performance warranty provisions. Enware Australia advises: 1. Due to ongoing Research and Development, specifications may change without notice. 2. Component specifications may change on some export models.



IN-WALL ADJUSTMENT:  
TRIM DOWN TO SUIT  
DURING INSTALLATION



Version: Apr 19

Call 1300 369 273

[www.enware.com.au](http://www.enware.com.au)

Enware Australia Pty Limited  
9 Endeavour Rd Caringbah NSW 2229 Australia  
Ph: 02 8536 4000 [info@enware.com.au](mailto:info@enware.com.au)

