

Aquablend™ SQX™ Mixer with Extended Lever Handle

Aquablend™ SQX™ high performance thermostatic mixing valve technology combined with sequential mixing technology provides the first Watermark Certified point of use thermostatic mixers in Australia.

The range delivers the most advanced choice for safe warm water delivery in high risk applications such as hospitals and aged care facilities, offering anti-scald protection and reduced risk of Legionella.

Duty of care is improved with the TMV located at the outlet reducing the risk of microbial or bacterial growth within the plumbing supply lines.

Suitable for health and general applications, with NSW Health approval for use in health care in NSW.

FEATURES

- Provides personal temperature control at 'Point of Use'
- Compliant to AS4032.4
- Sequential operation for energy efficient flow and temperature control
- Cool to touch & non-conductive mixer body
- Colour indication on handle for easy identification
- Easy to clean design
- Serviceable in-situ
- Fixed spout
- Australian designed and manufactured
- Longer lever, designed for elbow control in health applications and for easier use in accessible applications

ATM606D



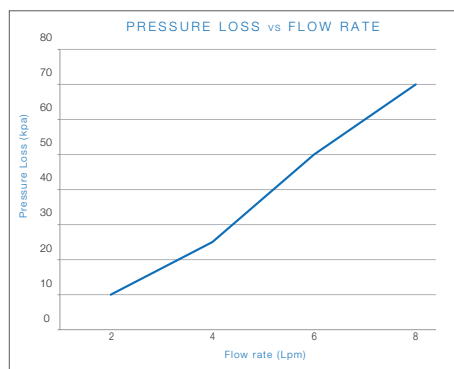
Product Codes

- ATM606D-4** 8 lpm nominal flow rate
- ATM606D-5** 6 lpm nominal flow rate
- ATM606D-6** 5 lpm nominal flow rate

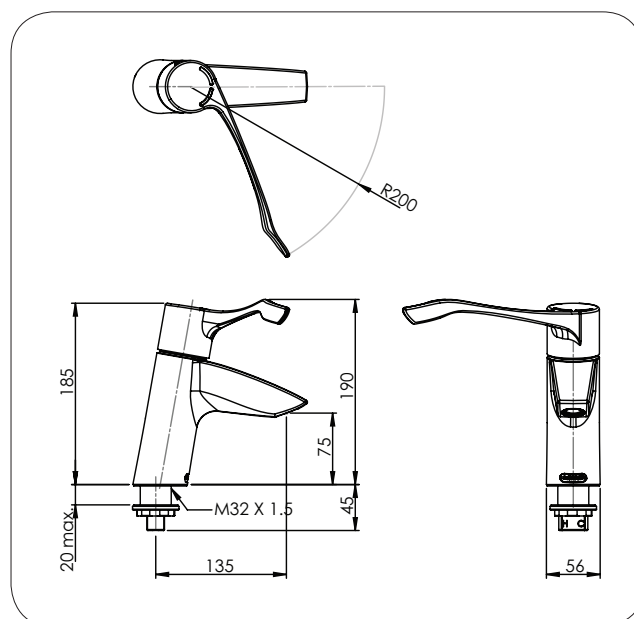


Technical Information

Hot Inlet Temperature Range	55°C - 85°C
Cold Inlet Temperature Range	5°C - 25°C
Adjustable Temperature Range	Full Cold - 46°C
Operating Working Pressure	20 - 500 * kPa
Dynamic Inlet Pressures	Min 20kPa Max 500kPa For optimum operation it is recommended that the hot and cold water supply pressures be balanced within +/- 10%



*Enware tapware must be installed in accordance with the provisions of AS/NZS 3500. Installations not complying with AS/NZS 3500 may void the product and performance warranty provisions. Enware Australia advises: 1. Due to ongoing Research and Development, specifications may change without notice. 2. Component specifications may change on some export models.



Version: Apr 19

Call 1300 369 273
www.enware.com.au

Enware Australia Pty Limited
9 Endeavour Rd Caringbah NSW 2229 Australia
Ph: 02 8536 4000 info@enware.com.au

